

KPH | KOANUI POLLED HEREFORDS

2021 Sale Catalogue

64 Rising Two Year Old Bulls

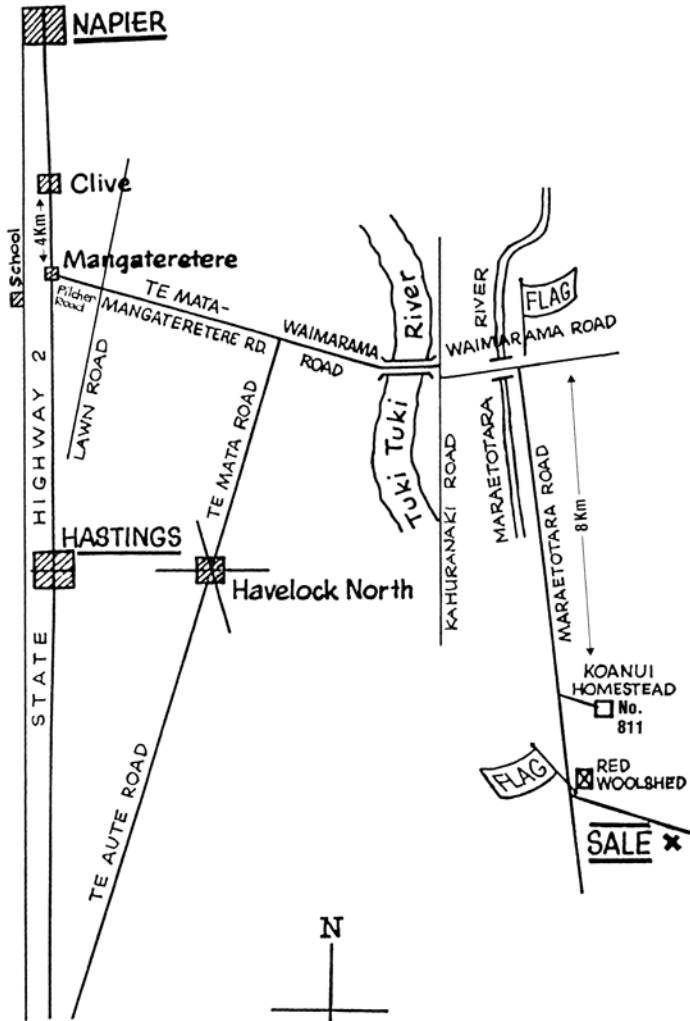
ON FARM AUCTION

1 pm Thursday 17 June



www.koanuiherefords.co.nz





OPEN DAY

Thursday May 27th

from 11:00am at the Sale Shed, 811 Maraetotara Road

Or view the cattle any time by prior arrangement

Phone: 06 8747844

or email: info@koanuiherefords.co.nz

KPH | KOANUI POLLED HEREFORDS

64 Rising Two Year Old Polled Hereford Bulls

ON FARM AUCTION with bidr® 1 pm Thursday 17 June

The 2021 sale bulls are being sold on farm and online by bidr® hybrid auction. We encourage you to view the bulls prior to sale. Internet phone calling will be available for agents on sale day through bidr® wifi. Contact Koanui or your livestock agent for further information.

- 800 registered cows
- Good value, top genetics
- All performance recorded
- Bulls semen & service tested
- Performance & BVD tested
- Rigorous selection
- TB status C10
- *Satisfaction guaranteed!*

OPEN DAY

**Thursday May 27th
from 11:00am**

**Or view the cattle any time
by prior arrangement**

**Phone: 06 8747844
or email:**

info@koanuiherefords.co.nz

For any Enquiries or Inspection:

Chris Chesterman 06 874 7844
 027 488 8635
Jennifer Chesterman 027 477 7637
Fred Chesterman 06 874 7728
Russell Dalldorf 027 250 9096

info@koanuiherefords.co.nz

www.facebook.com/KoanuiPH/

Agent Contacts:

PGG Wrightson

Cam Heggie 027 501 8182
Matt Harvey 027 318 6746

Carrfields Ltd.

Tom Suttor 027 616 4504

WR Dyer Livestock

Ross Dyer 027 433 3381

Redshaw Livestock Ltd.

Dean Freeman 027 445 1944

www.koanuiherefords.co.nz

Conditions of Sale

1. This sale is a “Hybrid online and on farm auction sale.” In addition to the normal on-farm auction format the sale will be hosted by bidr® (www.bidr.co.nz) as a HYBRID auction, with online bidding and a live-stream available on sale day. Note the on-farm auctioneer remains in control of the sale and the fall of the hammer.
All intending ONLINE purchasers must register on bidr® in advance of the sale date, by visiting the website and using the “sign up” button, adding their contact information and nominating the agency they would like to purchase through and account held with that agency. Alternatively, purchasers can organise an agent from one of the agencies listed on bidr® to buy on their behalf.
All intending ON-FARM purchasers must register with the booking clerk prior to commencement of the sale.
2. On behalf of the vendor, PGG Wrightson Ltd (PGW) will pay a purchasing rebate of 6% of the purchase price excluding GST, plus GST, to livestock agents with a PGW Monthly Account that are also Accredited Agencies on bidr® where the buyer has registered on bidr® under that Accredited Agency.
3. All Lots sold exclusive of G.S.T
4. PAYMENT: Fourteen days after the sale.
bidr®’s Conditions of Sale and Terms of Use apply. These terms can be inspected at <https://bidr.co.nz/content/user-terms-conditions>
PGG Wrightson (PGW)’s Monthly Account Terms of Trade also apply to the extent deemed relevant by PGW. The current versions of PGW’s Monthly Account Terms of Trade are also available online at: <https://www.pggwrightson.co.nz/Our-Company/Terms-and-Conditions> or in hardcopy on request.
5. Although all care has been taken in compiling this Catalogue, no responsibility will be taken for any errors or omissions thereof.
6. No warranty will be given with any Lot, and as all Lots are open for inspection prior to the sale, the same are sold with all faults, if any. No compensation shall be made in respect of any fault or error of description of any Lots; however, the vendor reserves the right to make compensation to a buyer if it is the vendor’s wish. It is recommended to inspect bulls before the sale where possible.
7. Every Lot will be at the risk of the purchaser as from the fall of the hammer.
8. **Buyers are advised to insure Bulls.** All Bulls remaining on the property pending delivery should be insured by the Purchaser as no responsibility shall be taken by the Vendor. All bulls are to be uplifted by 1 July, 2021 unless arrangements prior to the sale have been made.
9. ALL STUD BULLS purchased must be uplifted as soon as transport is available. Transfers will be available on Stud Bulls. Please provide Transfer Herd Number(s) to the vendor on the Purchaser’s Slip if a transfer is required.
10. All Bulls have been Service and Semen tested. All bulls are BVD Tested Negative and vaccinated for BVD with Hiprabovis prior to sale.
11. T.B. STATUS C10.

For further information contact:

- The bidr® team is always available to help purchasers get signed up and registered, and the HelpDesk is proudly managed in-house from the Waikato. Please call 0800 TO BIDR (0800 86 2437), or email enquiries@bidr.co.nz for assistance at any point. Alternatively, contact Caitlin Rokela, National Territory Manager, for any enquiries on 0274056156.
- The Auctioneer: Mr Cam Heggie PGG Wrightson Genetics 0275018182
- Your own livestock agent.

The Koanui Sale 2021

Dear friends and fellow breeders,

What a strange year it has been. This time last year we were unsure as to whether we could have an on farm sale in June. In the end, after many communication updates, restrictions eased the night before the sale and a great day was had by all on farm as usual. We have learnt so much about being adaptable and agile for change.

In New Zealand we have been very fortunate for where we live and that the economy has continued to prosper. Farming has not changed, however, as we continue to face multiple challenges from markets and climate but we still need to expect the cattle we run to be the most efficient and productive animals that our environment and genetics can sustain. This creates some exciting and frustrating challenges that we believe our herd size and our diversity of genetics are able to address and solve.

We are making a significant investment in Genomics to identify the traits that each animal offers while continuing to back it up with intensive performance recording. We have invested over \$40,000 annually in gene testing so this is no small commitment for Koanui but we believe that in time it will give us the information power for accurate selection that no other herd will have.

Koanui has prioritised phenotype, soundness and structure with balanced genetics to produce cattle with longevity and sustainability across diverse environments and breeding programmes. We operate a very informed and economic farming system with priorities on fertility and performance.

Culling is also an essential aspect of breeding and this is the real benefit of having numbers as we continually look for a reason to put an animal out and only the very best get through. To be selected for mating, every one of our 800 registered cows must raise a calf every year from two years of age. We calve over 280 two year heifers annually and this is a vital part of our programme.

Health, performance and service and semen testing are key profit drivers and Koanui makes considerable investment in these areas to give all clients confidence and reassurance when purchasing a bull from us. Our commitment and passion are demonstrated by our level of investment for the long term benefit of our clients and our business.

We encourage you to join us on sale day. We very much look forward to being able to share some hospitality with you and invite you to share our commitment to the future of New Zealand's beef industry by purchasing a Koanui Bull.

kindest regards

Chris and Jennifer Chesterman

SEMEN SALE

KOANUI LAYER P028

BORN 21/07/18 HB No. 0216180028P

KOANUI LAYER 6278 (P)

{ R LEADER 6964 (IMP USA) (P)
 { KOANUI CYNTHIA 6099 (P)

{ HYALITE ON TARGET 936 (P)
 { R MISS REVOLUTION 1009 (P)
 { MAHUTA AXLE (BM) (P)
 { KOANUI CYNTHIA 4075 (P)

KOANUI REGAL 6629 (P)

{ KOANUI BARITONE 3600 (P)
 { KOANUI REGAL 3111 (S)

{ OKAWA BARITONE 9027 (P)
 { KOANUI IRANE 0454 (P)
 { KOANUI UNANIMOUS 0408 (BM) (P)
 { KOANUI REGAL 3302 (P)

\$ INDEX VALUES	
Hereford Prime	+\$154
Beef Heifer	+\$213
Dairy Beef	+\$125

CALVING EASE EBVs				GROWTH & MILK EBVs				
CE DIR	CE DTRS	GEST	BWT	200	400	600	MAT	MILK
+8.9	+7.4	-0.7	+2.1	+37	+59	+80	+59	+19

FERTILITY EBVs	
SS	DTC
+3.3	-6.5

CARCASE EBVs					
CW	EMA	RIB	RUMP	RBY	IMF
+56	+3.4	+1.3	+1.6	+0.7	+0.5

Traits Observed: CE BWT 200WT 400WT(x2) 600WT(x2) SS FAT EMA IMF Genomics

\$5000 for 50 Straws of semen for Within Purchaser Herd Use Only. Layer has an amazing phenotype with thickness, depth, hind quarter and he can show it off with his presence and style. Layer's dam is proving to be an exceptional young female with her first two sons being retained at Koanui. We are excited for the future he will have at Koanui and semen packages are available in New Zealand and Australia. Layer is a Boehringer Ingelheim Dairy Sire his \$ Indexes are at the top of the breed across the board.



REFERENCE SIRE

GRASSMERE GALLANT 152

BORN 09/09/15

HB No. 0200150152P

MONYMUSK GALLANT 110089 (P)

{ MATARIKI DUNSTAN (P)
{ MONYMUSK DOROTHY 070083 (SBM) (P)

{ GRASSMERE SARGE 01 786 (P)
{ MATARIKI LEONORA 00302 (P)
{ OKAWA LAIDLAW 4156 (P)
{ MONYMUSK DOROTHY 04 0005 (S)

GRASSMERE PRINCESS 826 (P)

{ OKAWA PANDA 9225 (P)
{ GRASSMERE PRINCESS 706 (P)

{ OKAWA FIXTURE 6044 (P)
{ OKAWA BELLA 6214 (P)
{ MATARIKI HEMINGWAY (P)
{ GRASSMERE PRINCESS 245 (P)

\$ INDEX VALUES	
Hereford Prime	+\$121
Beef Heifer	+\$115
Dairy Beef	+\$113

CALVING EASE EBVs				GROWTH & MILK EBVs				
CE DIR	CE DTRS	GEST	BWT	200	400	600	MAT	MILK
+2.8	+1.3	-0.2	+5.5	+40	+62	+93	+74	+17

FERTILITY EBVs	
SS	DTC
+2.0	+0.0

CARCASE EBVs					
CW	EMA	RIB	RUMP	RBY	IMF
+63	+5.7	+0.2	-0.6	+2.2	+0.5

Traits Observed: CE BWT 200WT 400WT(x2) SS FAT EMA IMF Genomics

Gallant was purchased in 2017 at the National Beef Expo sale for \$40,000 from Grassmere Polled Herefords. He is doing a superb job with both sons and daughters looking the part. The phenotype, soundness, and docility are exceptional. The consistency and quality of his offspring are very pleasing and with a large proportion of the offering in this sale by him that is the proof! They are good functional cattle that will last. Eye Muscle Area and Retail Beef Yield % both in the top 10% of the breed.



REFERENCE SIRE

BEECHWOOD GET STARTED

21

BORN 05/09/16

HB No. 0051160021P

OKAWA GOING 3011 (P)

{ OKAWA MARSHALL 1103 (P)
OKAWA LYDIA 1061 (P)

{ OKAWA DAVIS 7046 (BM) (P)
OKAWA AMETHYST 8155 (P)
OKAWA NIBBS 8097 (P)
OKAWA LYDIA 7113 (P)

BEECHWOOD SPOT ON 239 (P)

{ BEECHWOOD TURK (P)
BEECHWOOD SPOT ON 18 (P)

{ YARRAM LOTTERY X122 (IMP AUS) (BM) (J)
BEECHWOOD BELLA 713 (P)
BEECHWOOD VALUE FOR MONEY (P)
BEECHWOOD SPOT ON 838 (P)

\$ INDEX VALUES	
Hereford Prime	+\$79
Beef Heifer	+\$21
Dairy Beef	+\$77

CALVING EASE EBVs				GROWTH & MILK EBVs				
CE DIR	CE DTRS	GEST	BWT	200	400	600	MAT	MILK
-8.1	+0.3	-1.8	+5.5	+35	+63	+100	+108	+22

FERTILITY EBVs	
SS	DTC
+2.5	-3.1

CARCASS EBVs					
CW	EMA	RIB	RUMP	RBY	IMF
+62	+4.2	+0.3	+0.3	+1.3	+0.2

Traits Observed: CE BWT 200WT 400WT 600WT SS FAT EMA IMF Genomics

Get Started is in the top end for growth with exceptional soundness and an ideal disposition. He is dark with ideal cosmetics and has done a good job for these attributes. Get Started just pushes the growth beyond where we believe is optimum. However we will continue to use more of him through his son, Koanui Start Q517, Lot 6 in the sale, with Semen Retained for Within Herd Use in our AI programme.

REFERENCE SIRE

KOANUI EXCITEMENT 5024

BORN 21/07/15

HB No. 0216155024P

OKAWA MARSHALL 1103 (P)

{ OKAWA DAVIS 7046 (BM) (P)
OKAWA AMETHYST 8155 (P)

{ OKAWA LAIDLAW 5184 (BM) (P)
OKAWA BELL 5041 (SBM) (P)
OKAWA THUYIA 5148 (P)
OKAWA AMETHYST 6073 (P)

KOANUI MINERVA 9079 (P)

{ KOANUI KOOTENAY 6605 (BM) (P)
KOANUI MINERVA 6473 (P)

{ KOANUI KOOTENAY 3067 (P)
KOANUI DAINTY 2453 (PBM) (ET) (P)
KOANUI DATA 4270 (P)
KOANUI MINERVA 4225 (SBM) (P)

\$ INDEX VALUES	
Hereford Prime	+\$71
Beef Heifer	+\$104
Dairy Beef	+\$105

CALVING EASE EBVs				GROWTH & MILK EBVs				
CE DIR	CE DTRS	GEST	BWT	200	400	600	MAT	MILK
+2.7	+4.3	-4.8	+5.0	+35	+65	+92	+96	+29

FERTILITY EBVs	
SS	DTC
+2.4	-2.4

CARCASS EBVs					
CW	EMA	RIB	RUMP	RBY	IMF
+59	+3.3	+0.1	-0.1	+1.2	-0.2

Traits Observed: GL CE BWT 200WT 400WT 600WT SS FAT EMA IMF Genomics

5024 has the cosmetic appeal and impeccable feet that make up an important part of our programme. He will be a maternal powerhouse with plenty of milk and a dam that has the best udder at Koanui. There are some significant Benchmark animals in 5024's pedigree including Platinum Benchmark Koanui Dainty 2453. We have used four sons from 5024's dam, Koanui Minerva 9079. 5024 is a sire trait leader for Milk and Short Gestation Length EBVs.

REFERENCE SIRE

KOANUI MIDRIB 5382

BORN 11/08/15

HB No. 0216155382P

OKAWA MARSHALL 1103 (P)

{ OKAWA DAVIS 7046 (BM) (P)
OKAWA AMETHYST 8155 (P)

{ OKAWA LAIDLAW 5184 (BM) (P)
OKAWA BELL 5041 (SBM) (P)
OKAWA THUYIA 5148 (P)
OKAWA AMETHYST 6073 (P)

KOANUI CYNTHIA 1112 (P)

{ KOANUI GOULBURN 8114 (P)
KOANUI CYNTHIA 5645 (P)

{ WIRANYA GOULBURN (IMP AUS) (P)
KOANUI AMETHYST 2432 (P)
KOANUI UNANIMOUS 3152 (BM) (P)
KOANUI CYNTHIA 2365 (P)

\$ INDEX VALUES	
Hereford Prime	+\$102
Beef Heifer	+\$142
Dairy Beef	+\$120

CALVING EASE EBVs				GROWTH & MILK EBVs				
CE DIR	CE DTRS	GEST	BWT	200	400	600	MAT	MILK
+7.3	+2.0	-2.4	+1.8	+33	+61	+84	+73	+25

FERTILITY EBVs	
SS	DTC
+2.6	-3.7

CARCASS EBVs					
CW	EMA	RIB	RUMP	RBY	IMF
+64	+2.6	+1.0	+1.1	+0.3	+0.4

Traits Observed: CE BWT 200WT 400WT 600WT SS FAT EMA IMF Genomics

Midrib has done an exceptional job and will be a very important part of the Koanui breeding programme for a very long time. Midrib is a very easy keeping bull with moderate frame and very maternal. His dam is one of our top cows. We are using 3 of his sons in the herd and his daughters are highly regarded. Midrib 3582 is a rare bull that suits all parts of the industry: heifer, cow, beef or dairy.

REFERENCE SIRE

KOANUI XCELORATOR 5088

BORN 26/07/15

HB No. 0216155088P

TRIARA XCELORATOR 594X
(IMP CAN) (P)

{ TRIARA UNLEASHED 893U (P)
BET-AN 40L NANETTE 23N (P)

{ CCR 57G STAMINA ET 199S (DLF IEF HYF) (P)
JOYCLIFF RUBY JANE 129M (P)
LAKEFORD 4J NETWORK 40L (P)
LAKEFORD SARALEE 74L (P)

KOANUI GLORY 0303 (P)

{ KOANUI SPECTRE 8365 (P)
KOANUI GLORY 8258 (P)

{ KOANUI SPY 5054 (ET) (P)
KOANUI BLUSH 4606 (ET) (P)
KOANUI CLAMOR 2171 (P)
KOANUI GLORY 1042 (P)

\$ INDEX VALUES	
Hereford Prime	+\$139
Beef Heifer	+\$208
Dairy Beef	+\$131

CALVING EASE EBVs				GROWTH & MILK EBVs				
CE DIR	CE DTRS	GEST	BWT	200	400	600	MAT	MILK
+11.8	+6.8	+1.9	+2.3	+36	+68	+80	+54	+16

FERTILITY EBVs	
SS	DTC
+2.0	-2.4

CARCASS EBVs					
CW	EMA	RIB	RUMP	RBY	IMF
+65	+5.2	+1.2	+1.3	+1.0	+0.3

Traits Observed: GL CE BWT 200WT 400WT 600WT SS FAT EMA IMF Genomics

5088 is an important corner stone sire within our programme at Koanui. He has impeccable feet and legs, temperament, is well bodied and very correct. His sire was introduced as a new bloodline and his dam, a Spectre female, is from one of our best cow families. Xcelorator is certainly breeding top offspring. He is in the very top of the breed for every \$ Index. In 2019 a half share in Koanui Xcelorator 5088 was sold to Kokonga Herefords. We have retained a 5088 son as a herd sire at Koanui with lovely calves now on the ground. 5088 has exceptional figures. He is in the very top of the breed for all three \$ Indexes.

EBVs Explained

Estimated Breeding Values (EBVs) are estimates of the animal's genetic merit, half of which will be passed onto its progeny. They are expressed in units of measurement for each trait. For more information and EBV Tip sheets refer to <http://breedplan.une.edu.au>

Calving Ease EBVs

CE DIR – Calving Ease Direct % indicates how easily this bull's progeny are likely to be born. A higher figure means a higher likelihood of easy calving.

CE DTRS – % indicates how easily this bull's daughters are likely to calve. A higher figure means a higher likelihood of easy calving in the daughters.

GEST – Gestation Length in days indicates the predicted gestation length relative to average, the lower the value the shorter gestation length of the bull's calves.

BWT – Birth Weight (kg) predicted from analysis of actual birth weight data, the lower the value the smaller the sire's contribution to the weight of the calf at birth.

Growth and Milk EBVs

200 – 200 Day growth EBV (kg) is calculated from the weight of animals taken between 80 and 300 days of age. Values are adjusted to 200 days and for dam age. This EBV is the best single estimate of an animal's genetic merit for growth to early ages.

400 – Day Weight EBV (kg) is calculated from the weight of progeny taken between 301 and 500 days of age, adjusted to 400 days and for dam age. This EBV is the best single estimate of an animal's genetic merit for yearling weight.

600 – 600-Day Weight EBV (kg) is calculated from the weight of progeny taken between 501 and 900 days of age, adjusted to 600 days and for dam age. This EBV is the best single estimate of an animal's genetic merit for growth beyond yearling age.

MAT – Mature Cow Weight EBV (kg) is based on the cow weight when the calf is weighed for weaning, adjusted to 5 years of age. This EBV is an estimate of the genetic difference in cow weight at 5 years of age and is an indicator of growth at later ages and potential feed maintenance requirements of the females in the breeding herd.

MILK – 200-Day Milk EBV (kg) is an estimate of an animal's milking ability. For sires, this EBV is indicative of their daughter's milking ability as it affects the 200 day weight of their calves.

Fertility EBVs

SS - Scrotal Size (cm) is an indicator of male fertility in regards to semen quality and quantity. Higher (positive) EBVs indicate higher fertility. SS is also positively associated with female fertility.

DTC – Days to Calving (days) is an indicator of female fertility. Lower, or more negative, Days to Calving EBVs are generally more favourable reflecting females that get in calf quicker after mating, have early puberty and early return to oestrous after calving.

NZ HEREFORD Breed Average EBVs for 2019 Born Calves

CALVING EASE EBVs				GROWTH & MILK EBVs					FERTILITY	
CE DIR	CE DTRS	GEST	BWT	200	400	600	MAT	MILK	SS	DTC
+2.1	+1.8	-0.6	+4.1	+33	+55	+78	+67	+17	+2.0	-2.9

Carcase EBVs

CW - Carcase Weight EBV (kg) estimates the genetic difference in carcase weight at a standard age of 650 days. More positive EBVs indicate heavier carcasses at 650 days of age.

EMA - Eye Muscle Area EBV (cm²) estimates genetic differences in eye muscle area at the 12/13th rib site of a 300kg dressed carcase. More positive EBVs indicate better muscling on animals.

RIB - Rib Fat EBV (mm) estimates the genetic differences in fat depth at the 12/13th rib in a 300kg dressed carcase. More positive EBVs indicate more subcutaneous fat and earlier maturity.

RUMP - Rump Fat EBV (mm) estimates the genetic differences in fat depth at the P8 site on a 300kg dressed carcase. More positive EBVs indicate more subcutaneous fat and earlier maturity. Two fat EBVs are listed as there is variation between animals regarding fat depth at the two sites.

RBV – Retail Beef Yield % EBVs are estimates of genetic differences between animals in boned out retail beef yield in a standard weight steer carcase. RBV EBVs are reported as differences in percentage (%) yield. Larger, more positive, RBV EBVs are generally more favourable.

IMF - Intramuscular Fat % EBVs are estimates of generic difference between animals in intramuscular fat (marbling) at the 12/13 rib site in a 300kg carcase. Larger, more positive, IMF EBVs are generally more favourable.

\$ Index Values

\$ Index Values

Note there has been a change in the calculation of New Zealand Hereford Selection Indexes this year. A selection index combines the EBVs with economic information (costs and returns) for specific market and production systems to rank animals based on relative profit values.

Hereford Prime Index - Estimates the genetic differences between animals in net profitability per mixed age cow joined for a typical self-replacing commercial herd. Heifers are retained for breeding and so maternal traits are of importance. Steers target 550 kg live weight (300 kg carcase weight & 7 mm P8 fat) at 20 months of age, and heifers 475 kg (260 kg carcase weight & 8 mm fat depth), at 22 months of age.

Beef Heifer Index - Estimates the genetic differences between animals in net profitability per yearling heifer joined for a typical self-replacing commercial herd. Steers target 510 kg live weight (280 kg HSCW and 7 mm P8 fat depth) and heifers 450 kg (250 kg HSCW and 8 mm P8 fat depth) at 20 months of age.

Dairy Beef Index - Estimates the genetic differences between animals in net profitability per mixed age dairy cow joined with all progeny destined for slaughter. Steers and heifer progeny target 550 kg live weight (300 kg carcase weight and 6 mm fat depth) at 24 months of age and at 475 kg live weight (260 kg carcase weight and 7 mm fat depth) at 22 months, respectively.

NZ HEREFORD Breed Average EBVs for 2019 Born Calves

CARCASE EBVs					
CW	EMA	RIB	RUMP	RBV	IMF
+52	+3.5	+0.7	+0.8	+0.8	+0.5

\$ INDEX VALUES		
HPrime	Beef Heifer	Dairy Beef
+110	+112	+105

EBV Percentile Bands for All 2019 born NZ Herefords

	Calv-Ease				Birth				Growth				Fert				Carcase				Indexes				Extra				
	Dir	Dir%	Dir%	Dir%	GL	Bwt	200	400	600	Mwt	Milk	SS	DC	days	kg	cm	days	kg	sq.cm	EMA	Rib	P8	RBY	IMF	HP	BH	DB	Doc	Doc%
					days			kg	kg			cm	days	kg	mm	mm				mm	mm		%	%		\$			
High 1%	+12.4	+8.8	-6.8	-1.3	+48	+80	+72	+103	+96	+23	+4.2	-6.5	+78	+6.9	+2.5	+3.6	+2.5	+3.6	+2.3	+172	+228	+136	+21						
High 5%	+10.3	+6.9	-3.7	+0.4	+43	+72	+103	+96	+23	+3.4	-5.4	-4.8	+66	+5.8	+1.9	+2.7	+1.9	+1.6	+152	+195	+128	+18							
High 10%	+8.8	+5.8	-2.7	+1.3	+41	+69	+98	+90	+22	+3.1	-4.8	-4.8	+66	+5.2	+1.6	+2.2	+1.7	+1.3	+141	+176	+123	+16							
High 15%	+7.7	+5.1	-2.2	+1.9	+40	+66	+94	+86	+21	+2.8	-4.5	+63	+4.8	+1.4	+1.9	+1.5	+1.1	+1.1	+135	+166	+120	+13							
High 20%	+6.6	+4.6	-1.8	+2.4	+38	+64	+91	+82	+20	+2.7	-4.2	+61	+4.6	+1.3	+1.7	+1.3	+1.0	+1.0	+130	+157	+118	+12							
High 25%	+5.7	+4.1	-1.5	+2.8	+37	+62	+88	+79	+19	+2.5	-3.9	+59	+4.3	+1.2	+1.5	+1.2	+0.9	+0.9	+125	+149	+116	+10							
High 30%	+5.0	+3.6	-1.2	+3.1	+37	+61	+86	+77	+19	+2.4	-3.7	+58	+4.1	+1.1	+1.3	+1.1	+0.8	+1.2	+141	+114	+8								
High 35%	+4.2	+3.2	-1.0	+3.4	+36	+60	+84	+75	+18	+2.3	-3.5	+56	+3.9	+1.0	+1.2	+1.0	+0.7	+1.18	+134	+112	+7								
High 40%	+3.5	+2.7	-0.8	+3.7	+35	+58	+82	+72	+18	+2.2	-3.3	+55	+3.8	+0.9	+1.0	+0.9	+0.6	+1.15	+127	+110	+6								
High 45%	+2.7	+2.3	-0.6	+4.0	+34	+57	+80	+70	+17	+2.1	-3.1	+53	+3.6	+0.8	+0.9	+0.9	+0.5	+1.12	+120	+108	+5								
50%	+2.1	+1.9	-0.4	+4.3	+33	+56	+78	+68	+16	+2.0	-2.9	+52	+3.4	+0.7	+0.8	+0.8	+0.5	+1.09	+114	+106	+4								
Low 45%	+1.4	+1.5	-0.2	+4.5	+33	+54	+77	+65	+16	+1.9	-2.7	+51	+3.3	+0.6	+0.6	+0.7	+0.4	+1.06	+106	+104	+3								
Low 40%	+0.7	+1.1	+0.0	+4.8	+32	+53	+75	+63	+15	+1.8	-2.5	+49	+3.1	+0.5	+0.5	+0.6	+0.3	+1.03	+100	+102	+2								
Low 35%	+0.1	+0.7	+0.2	+5.0	+31	+52	+72	+60	+15	+1.7	-2.3	+48	+3.0	+0.4	+0.4	+0.5	+0.2	+1.00	+92	+100	+0								
Low 30%	-0.6	+0.2	+0.4	+5.3	+30	+50	+70	+58	+14	+1.6	-2.1	+47	+2.8	+0.3	+0.2	+0.4	+0.2	+0.97	+85	+98	-1								
Low 25%	-1.3	-0.3	+0.6	+5.6	+29	+49	+68	+55	+14	+1.5	-1.8	+45	+2.7	+0.2	+0.1	+0.3	+0.1	+0.94	+77	+95	-3								
Low 20%	-2.1	-0.8	+0.8	+5.9	+28	+47	+65	+52	+13	+1.4	-1.6	+43	+2.5	+0.1	-0.1	+0.2	+0.0	+0.90	+68	+93	-4								
Low 15%	-3.1	-1.4	+1.1	+6.2	+27	+45	+62	+48	+12	+1.3	-1.3	+41	+2.3	-0.1	-0.3	+0.1	-0.1	+0.87	+57	+89	-6								
Low 10%	-4.4	-2.2	+1.5	+6.6	+25	+42	+58	+43	+11	+1.1	-1.0	+38	+2.1	-0.2	-0.5	-0.1	-0.2	+0.81	+42	+85	-9								
Low 5%	-6.4	-3.4	+2.0	+7.2	+22	+38	+52	+35	+10	+0.8	-0.5	+34	+1.7	-0.5	-0.9	-0.3	-0.4	+0.74	+22	+78	-14								
Low 1%	-11.0	-6.1	+3.4	+8.4	+16	+29	+39	+16	+6	+0.2	+0.3	+26	+1.1	-1.1	-1.8	-0.9	-0.7	+0.59	-27	+61	-23								

LOT 1

KOANUI LANCELOT Q494

BORN 11/08/19 HB No. 0216190494P

KOANUI LANCELOT 6436 (P)

- R LEADER 6964 (IMP USA) (P)
- KOANUI MINERVA 9079 (P)

- HYALITE ON TARGET 936 (P)
- R MISS REVOLUTION 1009 (P)
- KOANUI KOOTENAY 6605 (BM) (P)
- KOANUI MINERVA 6473 (P)

KOANUI CYNTHIA 1007 (P)

- KOANUI CHIEFLY 9068 (P)
- KOANUI CYNTHIA 8472 (P)

- LIMEHILLS CHIEFTON 680 (P)
- KOANUI IRANE 1074 (GBM) (P)
- KOANUI SATURN 4119 (P)
- KOANUI CYNTHIA 3019 (ET) (P)

\$ INDEX VALUES	
Hereford Prime	+ \$98
Beef Heifer	+ \$118
Dairy Beef	+ \$108

CALVING EASE EBVs				GROWTH & MILK EBVs				
CE DIR	CE DTRS	GEST	BWT	200	400	600	MAT	MILK
+5.7	+1.6	-1.3	+1.9	+31	+59	+79	+74	+19

FERTILITY EBVs	
SS	DTC
+3.5	-3.5

CARCASS EBVs					
CW	EMA	RIB	RUMP	RBY	IMF
+53	+2.6	-0.3	-0.9	+1.1	-0.3

Traits Observed: CE BWT 200WT(x2) 400WT(x2) SS FAT EMA IMF Genomics

A very easy fleshing and quiet natured bull. Lancelot Q494 has a light birthweight and excellent scrotal size. Used as a yearling. Homozygous Polled. His dam is a quality cow of moderate frame and an ideal udder. The sire's pedigree is loaded with outcross genetics with carcass and maternal power.



Purchaser: Price: \$.....

LOT 2

KOANUI BRAVO Q627

BORN 26/08/19 HB No. 0216190627P

OTENGI BATON 484 (P)

- OTENGI BATON 147 (P)
- OTENGI GOLD 206 (P)

- CRAIGMORE BATON 09173 (P)
- OTENGI AMETHYST 1263 (P)
- CRAIGMORE GOLD 11379 (P)
- WAIMAIRE LEONORA 1310 (P)

KOANUI BLUSH 6360 (P)

- KOANUI CHEROKEE 3407 (P)
- KOANUI BLUSH 2074 (P)

- KOANUI CHEROKEE 9075 (BM) (P)
- KOANUI BLUSH 0276 (SBM) (P)
- KOANUI SPECTRE 8365 (P)
- KOANUI BLUSH 9148 (P)

\$ INDEX VALUES	
Hereford Prime	+\$156
Beef Heifer	+\$148
Dairy Beef	+\$118

CALVING EASE EBVs				GROWTH & MILK EBVs				
CE DIR	CE DTRS	GEST	BWT	200	400	600	MAT	MILK
+2.2	+0.0	+3.7	+5.3	+37	+72	+98	+74	+24

FERTILITY EBVs	
SS	DTC
+4.2	-6.4

CARCASE EBVs					
CW	EMA	RIB	RUMP	RBY	IMF
+61	+3.6	+1.7	+2.3	-0.1	+1.4

Traits Observed: CE BWT 200WT(x2) 400WT(x2) SS FAT EMA IMF Genomics

A standout bull with a great spread of figures, Growth, exceptional Fertility, Milk and Carcase Fats. Bravo Q627 is in the Top 5% of the breed for Hereford Prime \$ Index and has a very good Dairy Beef \$ Index. Used as a Yearling. Semen retained for within herd use. Homozygous Polled. The sire, Otengi Baton 484, has bred very well at Koanui and we have kept a half-brother to Q627 by him. There is nothing between them! Q627 has a very strong female line with Cherokee and Spectre two of the best female breeders that we have.



Purchaser:..... Price: \$.....

LOT 3

KOANUI GALLWAY Q570

BORN 18/08/19 HB No. 0216190570P

GRASSMERE GALLANT 152 (P)

- MONYMUSK GALLANT 110089 (P)
- GRASSMERE PRINCESS 826 (P)

- MATARIKI DUNSTAN (P)
- MONYMUSK DOROTHY 070083 (SBM) (P)
- OKAWA PANDA 9225 (P)
- GRASSMERE PRINCESS 706 (P)

KOANUI ROSE 3568 (P)

- KOANUI CHEROKEE 9075 (BM) (P)
- KOANUI ROSE 0604 (P)

- LIMEHILLS CHIEFTON 680 (P)
- KOANUI CYNTHIA U274 (GBM) (P)
- KOANUI DISPLAY 7214 (P)
- KOANUI ROSE 5746 (P)

\$ INDEX VALUES	
Hereford Prime	+\$112
Beef Heifer	+\$114
Dairy Beef	+\$120

CALVING EASE EBVs				GROWTH & MILK EBVs				
CE DIR	CE DTRS	GEST	BWT	200	400	600	MAT	MILK
+4.5	+1.7	+3.5	+3.3	+34	+53	+78	+56	+20

FERTILITY EBVs	
SS	DTC
+1.4	-0.8

CARCASE EBVs					
CW	EMA	RIB	RUMP	RYB	IMF
+53	+3.9	+0.8	+0.5	+0.3	+1.7

Traits Observed: CE BWT 200WT(x2) 400WT(x2) SS FAT EMA IMF Genomics

An impressive Gallant son who is very easy doing and has a tremendous temperament. Take note of his impressive IMF% EBV. Pedigree contains several Benchmark animals. Used as a Yearling. Semen retained for within herd use. Homozygous Polled. The dam is one of the most impressive cows we have. This bull should have been retained but with having used Gallant and three sons the semen will do."



Purchaser:..... Price: \$.....

LOT 4

KOANUI MIDRIB Q213

BORN 27/07/19 HB No. 0216190213P

KOANUI MIDRIB 5382 (P)

- OKAWA MARSHALL 1103 (P)
- KOANUI CYNTHIA 1112 (P)

- OKAWA DAVIS 7046 (BM) (P)
- OKAWA AMETHYST 8155 (P)
- KOANUI GOULBURN 8114 (P)
- KOANUI CYNTHIA 5645 (P)

KOANUI GLORY 3169 (P)

- KOANUI RIGHT-ON 1083 (P)
- KOANUI GLORY 0494 (P)

- KOANUI RUSSIA 7012 (P)
- KOANUI PEARL 6138 (P)
- KOANUI BOULDER 7050 (ET) (P)
- KOANUI GLORY 2506 (P)

\$ INDEX VALUES	
Hereford Prime	+\$121
Beef Heifer	+\$118
Dairy Beef	+\$102

CALVING EASE EBVs				GROWTH & MILK EBVs				
CE DIR	CE DTRS	GEST	BWT	200	400	600	MAT	MILK
+0.1	+2.2	-2.5	+5.6	+38	+66	+98	+94	+22

FERTILITY EBVs	
SS	DTC
+3.7	-5.3

CARCASS EBVs					
CW	EMA	RIB	RUMP	RBY	IMF
+62	+3.3	+0.5	+0.3	+1.5	+0.0

Traits Observed: CE BWT 200WT(x2) 400WT(x2) 600WT SS FAT EMA Genomics

A sale stand out! Midrib Q213 is a bull with plenty of growth and great carriage. He still has plenty of softness to him. Sired by Rib 5382 who was a very easy doing bull. Q213 has high Fertility and Growth EBVs. Homozygous Polled.



Purchaser:..... Price: \$.....

LOT 5

KOANUI MIDRIB Q226

BORN 28/07/19 HB No. 0216190226P

KOANUI MIDRIB 5382 (P)

- OKAWA MARSHALL 1103 (P)
- KOANUI CYNTHIA 1112 (P)

- OKAWA DAVIS 7046 (BM) (P)
- OKAWA AMETHYST 8155 (P)
- KOANUI GOULBURN 8114 (P)
- KOANUI CYNTHIA 5645 (P)

KOANUI CYNTHIA 5462 (P)

- KOANUI DISPLAY 2450 (P)
- KOANUI CYNTHIA 6276 (P)

- KOANUI DISPLAY 0381 (P)
- KOANUI MINERVA 9079 (P)
- KOANUI DISPLAY 2569 (BM) (P)
- KOANUI CYNTHIA 5237 (P)

\$ INDEX VALUES	
Hereford Prime	+ \$102
Beef Heifer	+ \$101
Dairy Beef	+ \$103

CALVING EASE EBVs				GROWTH & MILK EBVs				
CE DIR	CE DTRS	GEST	BWT	200	400	600	MAT	MILK
+1.6	+1.6	-0.2	+4.5	+36	+67	+94	+89	+19

FERTILITY EBVs	
SS	DTC
+2.9	-2.5

CARCASS EBVs					
CW	EMA	RIB	RUMP	RBY	IMF
+61	+2.4	+0.3	+0.1	+0.9	-0.1

Traits Observed: CE BWT 200WT 400WT(x2) 600WT SS FAT EMA

Midrib Q226 has a real barrel with length and a sire's presence and eye set. He has a very good back-end with lots of middle and spring of rib, just like his sire who has done a great job in the herd.



Purchaser: Price: \$.....

LOT 6

KOANUI START Q517

BORN 13/08/19 HB No. 0216190517P

BEECHWOOD GET STARTED 21 (P)

- OKAWA GOING 3011 (P)
- BEECHWOOD SPOT ON 239 (P)

- OKAWA MARSHALL 1103 (P)
- OKAWA LYDIA 1061 (P)
- BEECHWOOD TURK (P)
- BEECHWOOD SPOT ON 18 (P)

KOANUI GIRLIE 3347 (SBM) (P)

- KOANUI CAPTAIN 1464 (P)
- KOANUI GIRLIE 1092 (P)

- KOANUI CAPTAIN 8624 (P)
- KOANUI PEARL 8173 (P)
- KOANUI BOULDER 7050 (ET) (P)
- KOANUI GIRLIE 4201 (SBM) (P)

\$ INDEX VALUES	
Hereford Prime	+\$122
Beef Heifer	+\$105
Dairy Beef	+\$100

CALVING EASE EBVs				GROWTH & MILK EBVs				
CE DIR	CE DTRS	GEST	BWT	200	400	600	MAT	MILK
-1.1	+4.1	+1.2	+4.0	+32	+61	+88	+73	+22

FERTILITY EBVs	
SS	DTC
+3.1	-4.5

CARCASE EBVs					
CW	EMA	RIB	RUMP	RBV	IMF
+55	+3.4	+1.6	+2.3	+0.2	+0.8

Traits Observed: CE BWT 200WT(x2) 400WT(x2) 600WT SS FAT EMA Genomics

A very impressive bull out of a Silver Benchmark Dam. Q517 has a tremendous barrel with great capacity, softness and good carcass data. He is a real eye catcher with loads of quality and a rich dark red coat plus a very attractive head and eye. He will be used in our AI programme this year. Semen retained for Within Herd Use.



Purchaser: Price: \$

LOT 7

KOANUI BROADWAY Q361

BORN 04/08/19 HB No. 0216190361P

KOANUI BROADWAY 7292 (P)

- { BEECHWOOD BIG TIME (P)
- { KOANUI LEONORA 4116 (P)

- { BEECHWOOD TURK (P)
- { BEECHWOOD SPOT ON 14 (P)
- { ROTOITI G123 (P)
- { KOANUI LEONORA 0504 (P)

KOANUI GLORY 7417 (P)

- { KOANUI MOUNTAIN 4584 (P)
- { KOANUI GLORY 3169 (P)

- { ORARI GORGE K2 100035 (P)
- { KOANUI CYNTHIA 1566 (P)
- { KOANUI RIGHT-ON 1083 (P)
- { KOANUI GLORY 0494 (P)

\$ INDEX VALUES	
Hereford Prime	+\$102
Beef Heifer	+\$114
Dairy Beef	+\$109

CALVING EASE EBVs				GROWTH & MILK EBVs				
CE DIR	CE DTRS	GEST	BWT	200	400	600	MAT	MILK
+2.7	+2.2	-0.2	+4.6	+38	+66	+95	+91	+21

FERTILITY EBVs	
SS	DTC
+1.7	-2.1

CARCASS EBVs					
CW	EMA	RIB	RUMP	RYB	IMF
+65	+3.4	+0.6	+0.8	+1.1	+0.0

Traits Observed: BWT 200WT 400WT(x2) 600WT SS FAT EMA

A two year heifer's calf. A very stylish bull with a good back-end and powerful set of figures plus strong head and eye set. Q361 is in the top 10% of the breed for Growth and Carcass weight EBVs.



Purchaser:..... Price: \$.....

LOT 8

KOANUI ELITIST Q371

BORN 05/08/19 HB No. 0216190371P

KOANUI XCELERATOR 7194 (P)

- KOANUI XCELERATOR 5088 (P)
- KOANUI IRANE 1135 (P)

- TRIARA XCELERATOR 594X (IMP CAN) (P)
- KOANUI GLORY 0303 (P)
- KOANUI SPECTRE 8365 (P)
- KOANUI IRANE 9429 (P)

KOANUI QUEENMAKER 7095 (P)

- R LEADER 6964 (IMP USA) (P)
- KOANUI QUEENMAKER 5326 (P)

- HYALITE ON TARGET 936 (P)
- R MISS REVOLUTION 1009 (P)
- KOANUI TECHNO 3062 (P)
- KOANUI QUEENMAKER 2113 (P)

\$ INDEX VALUES	
Hereford Prime	+\$128
Beef Heifer	+\$116
Dairy Beef	+\$112

CALVING EASE EBVs				GROWTH & MILK EBVs				
CE DIR	CE DTRS	GEST	BWT	200	400	600	MAT	MILK
+2.3	+0.6	+1.9	+3.7	+40	+65	+86	+63	+22

FERTILITY EBVs	
SS	DTC
+1.7	-3.1

CARCASS EBVs					
CW	EMA	RIB	RUMP	RYB	IMF
+64	+5.0	+1.4	+1.6	+1.1	+0.7

Traits Observed: CE BWT 200WT 400WT(x2) 600WT SS FAT EMA

Elitist Q371 has a very interesting pedigree combining both good growth and carcass which you can see. A two year heifer's calf.



Purchaser:..... Price: \$.....

LOT 9

KOANUI COMMAND Q247

BORN 30/07/19 HB No. 0216190247P

KOANUI CAPTAIN 7395 (P)

- { KOANUI CAPTAIN 4217 (P)
- { KOANUI ROSE 1413 (GBM) (P)

- { KOANUI CAPTAIN 1464 (P)
- { KOANUI IRANE 2062 (P)
- { KOANUI CHEROKEE 9075 (BM) (P)
- { KOANUI ROSE 9391 (P)

KOANUI CYNTHIA 7009 (P)

- { KOANUI MOUNTAIN 4346 (P)
- { KOANUI CYNTHIA 5245 (SBM) (P)

- { ORARI GORGE K2 100035 (P)
- { KOANUI LYDIA 1475 (P)
- { KOANUI TECHNO 3062 (P)
- { KOANUI CYNTHIA 2091 (P)

\$ INDEX VALUES	
Hereford Prime	+ \$102
Beef Heifer	+ \$171
Dairy Beef	+ \$129

CALVING EASE EBVs				GROWTH & MILK EBVs				
CE DIR	CE DTRS	GEST	BWT	200	400	600	MAT	MILK
+10.1	+4.3	-2.7	+2.3	+35	+60	+83	+66	+28

FERTILITY EBVs	
SS	DTC
+2.7	-3.0

CARCASS EBVs					
CW	EMA	RIB	RUMP	RBY	IMF
+58	+2.6	-0.3	-0.8	+1.1	+0.6

Traits Observed: CE BWT 200WT(x2) 400WT(x2) 600WT SS FAT EMA Genomics

A great heifer mating bull with a smooth, flat shoulder and great length of body. A great mover. Pedigree contains a number of Benchmark animals.



Purchaser:..... Price: \$.....

LOT 10

KOANUI XCELERATOR Q555

BORN 16/08/19 HB No. 0216190555P

KOANUI XCELERATOR 5088 (P)

TRIARA XCELERATOR 594X (IMP)
 { CAN (P)
 KOANUI GLORY 0303 (P)

{ TRIARA UNLEASHED 893U (P)
 BET-AN 40L NANETTE 23N (P)
 KOANUI SPECTRE 8365 (P)
 KOANUI GLORY 8258 (P)

KOANUI CHUBB 6693 (P)

CRAIGMORE BARITONE 120305 (P)
 { KOANUI CHUBB 1491 (P)

{ OKAWA BARITONE 9177 (P)
 CRAIGMORE CYNTHIA 07091 (SBM) (P)
 KOANUI BOULDER 7050 (ET) (P)
 KOANUI CHUBB 7337 (P)

\$ INDEX VALUES	
Hereford Prime	+\$119
Beef Heifer	+\$110
Dairy Beef	+\$103

CALVING EASE EBVs				GROWTH & MILK EBVs				
CE DIR	CE DTRS	GEST	BWT	200	400	600	MAT	MILK
+2.0	+3.2	+3.7	+3.0	+32	+64	+76	+58	+20

FERTILITY EBVs	
SS	DTC
+2.8	-3.8

CARCASE EBVs					
CW	EMA	RIB	RUMP	RBY	IMF
+54	+4.1	+1.1	+1.2	+0.8	+0.4

Traits Observed: GL CE BWT 200WT 400WT(x2) 600WT SS FAT EMA

Good length from hip to pin and a good phenotype. Another Xcelerator 5088 son with a deep red coat, clean sheathed with a good carcass.



Purchaser:..... Price: \$.....

LOT 11

KOANUI GALLWAY Q462

BORN 09/08/19 HB No. 0216190462P

GRASSMERE GALLANT 152 (P)

- MONYMUSK GALLANT 110089 (P)
- GRASSMERE PRINCESS 826 (P)

- MATARIKI DUNSTAN (P)
- MONYMUSK DOROTHY 070083 (SBM) (P)
- OKAWA PANDA 9225 (P)
- GRASSMERE PRINCESS 706 (P)

KOANUI GLORY 4321 (P)

- KOANUI CAPTAIN 1464 (P)
- KOANUI GLORY 2036 (P)

- KOANUI CAPTAIN 8624 (P)
- KOANUI PEARL 8173 (P)
- NITHDALE INTREPID 080041 (P)
- KOANUI GLORY 2170 (P)

\$ INDEX VALUES	
Hereford Prime	+\$127
Beef Heifer	+\$166
Dairy Beef	+\$123

CALVING EASE EBVs				GROWTH & MILK EBVs				
CE DIR	CE DTRS	GEST	BWT	200	400	600	MAT	MILK
+8.0	+3.9	-0.2	+2.6	+33	+58	+84	+68	+17

FERTILITY EBVs	
SS	DTC
+3.0	-2.0

CARCASS EBVs					
CW	EMA	RIB	RUMP	RBV	IMF
+61	+5.0	+0.3	-0.1	+2.0	+0.2

Traits Observed: CE BWT 200WT 400WT(x2) 600WT SS FAT EMA

A good bull with balance, length and a strong top. It is nice to have high Calving Ease combined with the set of figures and quality of this bull. High \$ Indexes and in the top 10% of the breed for Dairy Beef \$ Index.



Purchaser:..... Price: \$.....

LOT 12

KOANUI ATOM Q464

BORN 10/08/19 HB No. 0216190464P

KOKONGA ANZAC 7017 (P)

- INJEMIRA ANZAC K220 (IMP AUS) (P)
- OKAWA CYNTHIA 0234 (P)

- ALLEDALE ANZAC E114 (P) (P)
- INJEMIRA PLUM E212 (P) (P)
- OKAWA ADMIRAL 6229 (P)
- OKAWA CYNTHIA 0078 (SBM) (P)

KOANUI CYNTHIA 6218 (P)

- KOANUI HOOD 3135 (P)
- KOANUI CYNTHIA 7085 (P)

- KOANUI UNANIMOUS 0408 (BM) (P)
- KOANUI LADY REDFIELD 7321 (P)
- KOANUI ARROW 4004 (P)
- KOANUI CYNTHIA 3354 (P)

\$ INDEX VALUES	
Hereford Prime	+\$148
Beef Heifer	+\$141
Dairy Beef	+\$110

CALVING EASE EBVs				GROWTH & MILK EBVs				
CE DIR	CE DTRS	GEST	BWT	200	400	600	MAT	MILK
+0.5	+3.4	-0.3	+5.4	+42	+69	+103	+81	+20

FERTILITY EBVs	
SS	DTC
+2.5	-4.1

CARCASE EBVs					
CW	EMA	RIB	RUMP	RBY	IMF
+67	+3.5	-0.4	-1.2	+1.9	+0.3

Traits Observed: CE BWT 200WT 400WT(x2) 600WT SS FAT EMA Genomics

A growthy bull in the Top 10% of the breed for Herford Prime \$ Index. We have retained another Anzac son in herd otherwise this bull would have been used. Have a close look at this bull. Homozygous Polled.



Purchaser:..... Price: \$.....

LOT 13

KOANUI BROADWAY Q445

BORN 09/08/19 HB No. 0216190445P

KOANUI BROADWAY 7292 (P)

- { BEECHWOOD BIG TIME (P)
- { KOANUI LEONORA 4116 (P)

- { BEECHWOOD TURK (P)
- { BEECHWOOD SPOT ON 14 (P)
- { ROTOITI G123 (P)
- { KOANUI LEONORA 0504 (P)

KOANUI HEATHER 7068 (P)

- { KOANUI BENTLEY 5067 (P)
- { KOANUI HEATHER 5374 (P)

- { BEECHWOOD BIG TIME (P)
- { KOANUI CYNTHIA 5643 (P)
- { KAIRURU INDIA 110045 (P)
- { KOANUI HEATHER 7063 (P)

\$ INDEX VALUES	
Hereford Prime	+\$111
Beef Heifer	+\$110
Dairy Beef	+\$107

CALVING EASE EBVs				GROWTH & MILK EBVs				
CE DIR	CE DTRS	GEST	BWT	200	400	600	MAT	MILK
-0.5	+1.1	+1.2	+7.9	+46	+84	+115	+120	+19

FERTILITY EBVs	
SS	DTC
+3.6	-2.7

CARCASE EBVs					
CW	EMA	RIB	RUMP	RBY	IMF
+68	+3.2	+0.2	+0.0	+0.8	+0.2

Traits Observed: CE BWT 200WT(x2) 400WT(x2) 600WT SS FAT EMA Genomics

Top end performance with a strong head and eye set, cosmetic appeal and good spring of rib. A two year heifer's calf. In the top of the breed for the Growth traits and very high for Scrotal Size EBVs. Not suitable for heifers.



Purchaser:..... Price: \$.....

LOT 14

KOANUI EXCITMENT Q498

BORN 12/08/19 HB No. 0216190498P

KOANUI EXCITEMENT 5024 (P)

- OKAWA MARSHALL 1103 (P)
- KOANUI MINERVA 9079 (P)

- OKAWA DAVIS 7046 (BM) (P)
- OKAWA AMETHYST 8155 (P)
- KOANUI KOOTENAY 6605 (BM) (P)
- KOANUI MINERVA 6473 (P)

KOANUI ANGEL 5021 (P)

- TRIARA XCELERATOR 594X (IMP CAN) (P)
- KOANUI ANGEL 8486 (P)

- TRIARA UNLEASHED 893U (P)
- BET-AN 40L NANETTE 23N (P)
- KOANUI UNANIMOUS 3152 (BM) (P)
- KOANUI ANGEL 2314 (P)

\$ INDEX VALUES	
Hereford Prime	+\$120
Beef Heifer	+\$148
Dairy Beef	+\$110

CALVING EASE EBVs				GROWTH & MILK EBVs				
CE DIR	CE DTRS	GEST	BWT	200	400	600	MAT	MILK
+5.0	+6.3	-2.5	+2.4	+30	+60	+80	+63	+21

FERTILITY EBVs	
SS	DTC
+3.3	-3.2

CARCASE EBVs					
CW	EMA	RIB	RUMP	RBV	IMF
+60	+4.1	+0.9	+1.0	+1.3	-0.1

Traits Observed: CE BWT 200WT 400WT(x2) 600WT SS FAT EMA Genomics

A stylish bull with a great balance of pedigree combining the maternal of Excitement and carcass of Xcelerator. Both have A+ feet. A calving ease option while maintaining good growth. Q498 has excellent testicles. Homozygous Polled.



Purchaser:..... Price: \$.....

LOT 15

KOANUI EXCITMENT Q354

BORN 05/08/19 HB No. 0216190354P

KOANUI EXCITEMENT 5024 (P)

- OKAWA MARSHALL 1103 (P)
- KOANUI MINERVA 9079 (P)

- OKAWA DAVIS 7046 (BM) (P)
- OKAWA AMETHYST 8155 (P)
- KOANUI KOOTENAY 6605 (BM) (P)
- KOANUI MINERVA 6473 (P)

KOANUI ANGEL 4083 (P)

- KOANUI CAPTAIN 1464 (P)
- KOANUI ANGEL 2438 (P)

- KOANUI CAPTAIN 8624 (P)
- KOANUI PEARL 8173 (P)
- KOANUI DISPLAY 0381 (P)
- KOANUI ANGEL 9060 (P)

\$ INDEX VALUES	
Hereford Prime	+\$93
Beef Heifer	+\$119
Dairy Beef	+\$104

CALVING EASE EBVs				GROWTH & MILK EBVs				
CE DIR	CE DTRS	GEST	BWT	200	400	600	MAT	MILK
+5.6	+4.1	+0.0	+1.3	+24	+53	+72	+55	+25

FERTILITY EBVs	
SS	DTC
+2.9	-3.6

CARCASS EBVs					
CW	EMA	RIB	RUMP	RYB	IMF
+49	+3.2	+1.0	+1.3	+0.6	-0.4

Traits Observed: CE BWT 200WT(x2) 400WT(x2) 600WT SS FAT EMA Genomics

Calving Ease with this phenotype and data set is assured, in fact the figures across the board are decent. The dam was a very good cow. Homozygous Polled.



Purchaser:..... Price: \$.....

LOT 16

KOANUI COMMAND Q324

BORN 03/08/19 HB No. 0216190324P

KOANUI CAPTAIN 7395 (P)

- KOANUI CAPTAIN 4217 (P)
- KOANUI ROSE 1413 (GBM) (P)

- KOANUI CAPTAIN 1464 (P)
- KOANUI IRANE 2062 (P)
- KOANUI CHEROKEE 9075 (BM) (P)
- KOANUI ROSE 9391 (P)

KOANUI GRACEFUL 7370 (P)

- KOANUI MOUNTAIN 4346 (P)
- KOANUI GRACEFUL 5165 (P)

- ORARI GORGE K2 100035 (P)
- KOANUI LYDIA 1475 (P)
- KOANUI UNIVERSAL 3297 (P)
- KOANUI GRACEFUL 3509 (P)

\$ INDEX VALUES	
Hereford Prime	+\$114
Beef Heifer	+\$124
Dairy Beef	+\$114

CALVING EASE EBVs				GROWTH & MILK EBVs				
CE DIR	CE DTRS	GEST	BWT	200	400	600	MAT	MILK
+4.5	+0.4	-1.1	+2.7	+36	+65	+91	+70	+25

FERTILITY EBVs	
SS	DTC
+2.6	-2.9

CARCASE EBVs					
CW	EMA	RIB	RUMP	RBY	IMF
+65	+3.1	+0.1	-0.3	+1.3	+0.1

Traits Observed: CE BWT 200WT 400WT(x2) 600WT SS FAT EMA

A two year heifer's calf. A good bull, very stylish, attractive and dark.



Purchaser:..... Price: \$.....

LOT 17

KOANUI KAHOOTS Q098

BORN 23/07/19 HB No. 0216190098P

KOANUI KAHUNA 7299 (P)

- YAVENVALE KAHUNA K115 (IMP AUS) (P)
- KOANUI MINERVA 9079 (P)

- CB 57U CAN DOO 102Y (IMP CAN) (P)
- YAVENVALE LOCHIEL LADY D488 (P) (P)
- KOANUI KOOTENAY 6605 (BM) (P)
- KOANUI MINERVA 6473 (P)

KOANUI CYNTHIA 7041 (P)

- R LEADER 6964 (IMP USA) (P)
- KOANUI CYNTHIA 5481 (P)

- HYALITE ON TARGET 936 (P)
- R MISS REVOLUTION 1009 (P)
- CRAIGMORE BARITONE 120305 (P)
- KOANUI CYNTHIA 0226 (P)

\$ INDEX VALUES	
Hereford Prime	+\$119
Beef Heifer	+\$168
Dairy Beef	+\$118

CALVING EASE EBVs				GROWTH & MILK EBVs				
CE DIR	CE DTRS	GEST	BWT	200	400	600	MAT	MILK
+8.0	+5.8	-3.1	+1.7	+35	+57	+79	+49	+27

FERTILITY EBVs	
SS	DTC
+2.7	-4.4

CARCASE EBVs					
CW	EMA	RIB	RUMP	RBV	IMF
+55	+2.0	+1.5	+1.5	+0.3	+0.2

Traits Observed: CE BWT 200WT(x2) 400WT(x2) 600WT SS FAT EMA Genomics

A two year heifer's calf. Very maternal and an ideal heifer mating bull. Homozygous Polled.



Purchaser:..... Price: \$.....

LOT 18

KOANUI CAPTAIN Q526

BORN 14/08/19 HB No. 0216190526P

KOANUI CAPTAIN 6043 (P)

- { KOANUI CAPTAIN 4217 (P)
- { KOANUI BLUSH 4349 (P)

- { KOANUI CAPTAIN 1464 (P)
- { KOANUI IRANE 2062 (P)
- { KOANUI CHEROKEE 9075 (BM) (P)
- { KOANUI BLUSH 8468 (SBM) (P)

KOANUI CYNTHIA 7020 (P)

- { KOANUI EXCITEMENT 5024 (P)
- { KOANUI CYNTHIA 2014 (P)

- { OKAWA MARSHALL 1103 (P)
- { KOANUI MINERVA 9079 (P)
- { KOANUI BEDFORD 0103 (P)
- { KOANUI CYNTHIA 0259 (P)

\$ INDEX VALUES	
Hereford Prime	+ \$133
Beef Heifer	+ \$188
Dairy Beef	+ \$126

CALVING EASE EBVs				GROWTH & MILK EBVs				
CE DIR	CE DTRS	GEST	BWT	200	400	600	MAT	MILK
+8.1	+5.8	-3.7	+2.5	+30	+59	+84	+71	+21

FERTILITY EBVs	
SS	DTC
+3.2	-4.7

CARCASE EBVs					
CW	EMA	RIB	RUMP	RBY	IMF
+58	+4.3	+1.1	+1.2	+0.8	+0.9

Traits Observed: CE BWT 200WT(x2) 400WT(x2) 600WT SS FAT EMA Genomics

A very easy doing bull with a rich red coat. Captain Q526 provides a heifer mating option while maintaining good growth and carcass data. Dark, stylish and attractive, Q526 is a very quiet bull.



Purchaser: Price: \$

LOT 19

KOANUI ENLIST Q473

BORN 10/08/19 HB No. 0216190473P

KOANUI XCELERATOR 7118 (P)

- { KOANUI XCELERATOR 5088 (P)
- { KOANUI IRANE 0269 (P)

- { TRIARA XCELERATOR 594X (IMP CAN) (P)
- { KOANUI GLORY 0303 (P)
- { KOANUI DISPLAY 7214 (P)
- { KOANUI IRANE 5233 (P)

KOANUI TANIA 7175 (P)

- { KOANUI BARITONE 5322 (P)
- { KOANUI TANIA 5387 (P)

- { CRAIGMORE BARITONE 120305 (P)
- { KOANUI GLORY 0494 (P)
- { CRAIGMORE BARITONE 120305 (P)
- { KOANUI TANIA 5716 (P)

\$ INDEX VALUES	
Hereford Prime	+ \$85
Beef Heifer	+ \$101
Dairy Beef	+ \$105

CALVING EASE EBVs				GROWTH & MILK EBVs				
CE DIR	CE DTRS	GEST	BWT	200	400	600	MAT	MILK
+5.7	+3.8	+1.6	+0.9	+23	+55	+59	+52	+17

FERTILITY EBVs	
SS	DTC
+1.4	-2.2

CARCASS EBVs					
CW	EMA	RIB	RUMP	RBY	IMF
+44	+2.7	+1.2	+1.5	+0.1	+0.4

Traits Observed: CE BWT 200WT 400WT(x2) 600WT SS FAT EMA

A two year heifer's calf. Very maternal and an ideal heifer mating bull with great calving ease. Q473 has good depth and spring of rib. Homozygous Polled.



Purchaser:..... Price: \$.....

LOT 20

KOANUI BUYER Q412 (ET)

BORN 07/08/19 HB No. 0216190412P

KOANUI BYLINE 6035 (P)

- { KOANUI BYLINE 4177 (P)
- { KOANUI BLUSH 4419 (P)

- { KOANUI BUSTLER 2040 (P)
- { KOANUI MINERVA 1025 (SBM) (P)
- { KOANUI CRUISE 1270 (P)
- { KOANUI BLUSH 2575 (P)

KOANUI LEONORA 4116 (P)

- { ROTOITI G123 (P)
- { KOANUI LEONORA 0504 (P)

- { LAKE B107 (P)
- { STREAMLANDS LADY GRACEFUL 740 (SBM) (P)
- { KOANUI RUSSIA 7012 (P)
- { KOANUI LEONORA 6148 (P)

\$ INDEX VALUES	
Hereford Prime	+ \$78
Beef Heifer	+ \$69
Dairy Beef	+ \$96

CALVING EASE EBVs				GROWTH & MILK EBVs				
CE DIR	CE DTRS	GEST	BWT	200	400	600	MAT	MILK
+1.2	+2.6	+1.6	+4.2	+34	+58	+76	+69	+20

FERTILITY EBVs	
SS	DTC
+2.1	-1.6

CARCASE EBVs					
CW	EMA	RIB	RUMP	RBY	IMF
+50	+2.2	+1.3	+1.7	+0.0	+0.2

Traits Observed: BWT 200WT 400WT(x2) 600WT SS FAT EMA Genomics

An ET calf out of the best cow at Koanui. Buyer Q412 is a full brother to Q458 (Lot 29). He has constitution and a good barrel. The dam, 4116, is the model of the ideal cow with volume and capacity, yet very maternal and fertile. We have used three sons of 4116 in the herd - she is an exceptional breeder. Homozygous Polled.



Purchaser:..... Price: \$.....

LOT 21

KOANUI COMMAND Q505

BORN 12/08/19 HB No. 0216190505P

KOANUI CAPTAIN 7395 (P)

- { KOANUI CAPTAIN 4217 (P)
- { KOANUI ROSE 1413 (GBM) (P)

- { KOANUI CAPTAIN 1464 (P)
- { KOANUI IRANE 2062 (P)
- { KOANUI CHEROKEE 9075 (BM) (P)
- { KOANUI ROSE 9391 (P)

KOANUI MINERVA 7431 (P)

- { MAUNGAHINA PLATINUM120173 (P)
- { KOANUI MINERVA 9052 (GBM) (P)

- { KOANUI SAFETY 8557 (P)
- { MAUNGAHINA AMETHYST 060021 (P)
- { KOANUI KOOTENAY 6605 (BM) (P)
- { KOANUI MINERVA 6486 (ET) (P)

\$ INDEX VALUES	
Hereford Prime	+ \$110
Beef Heifer	+ \$162
Dairy Beef	+ \$124

CALVING EASE EBVs				GROWTH & MILK EBVs				
CE DIR	CE DTRS	GEST	BWT	200	400	600	MAT	MILK
+8.4	+4.2	-0.3	+2.9	+32	+63	+85	+66	+24

FERTILITY EBVs	
SS	DTC
+3.6	-2.4

CARCASS EBVs					
CW	EMA	RIB	RUMP	RBY	IMF
+56	+3.1	+0.0	-0.6	+1.1	+0.5

Traits Observed: CE BWT 200WT(x2) 400WT(x2) 600WT SS FAT EMA Genomics

In looking at this bull's figures you just think 'WOW'. A smaller framed bull but with good figures, high calving ease and a very good pedigree. High Beef Heifer \$ Index and in the top 10% of the breed for Dairy Beef \$ Index. There are some key Benchmark animals in this pedigree also.



Purchaser:..... Price: \$.....

LOT 22

KOANUI HOOD Q519

BORN 13/08/19 HB No. 0216190519P

KOANUI HOOD 3135 (P)

- KOANUI UNANIMOUS 0408 (BM)
- { (P)
- KOANUI LADY REDFIELD 7321 (P)

- { KOANUI UNANIMOUS 7174 (P)
- { KOANUI GIRLIE 3048 (SBM) (P)
- { KOANUI DISPLAY 5588 (ET) (P)
- { KOANUI LADY REDFIELD 5073 (P)

KOANUI GIRLIE 3085 (P)

- { KOANUI CRUISE 1270 (P)
- { KOANUI GIRLIE 1456 (P)

- { KOANUI BOULDER 7050 (ET) (P)
- { KOANUI CYNTHIA 5643 (P)
- { KOANUI BELTER 8406 (P)
- { KOANUI GIRLIE 6449 (P)

\$ INDEX VALUES	
Hereford Prime	+\$138
Beef Heifer	+\$146
Dairy Beef	+\$109

CALVING EASE EBVs				GROWTH & MILK EBVs				
CE DIR	CE DTRS	GEST	BWT	200	400	600	MAT	MILK
+4.1	+3.4	+1.8	+3.6	+34	+64	+82	+55	+23

FERTILITY EBVs	
SS	DTC
+2.4	-5.7

CARCASS EBVs					
CW	EMA	RIB	RUMP	RBY	IMF
+58	+3.1	+0.8	+0.7	+0.9	+0.3

Traits Observed: CE BWT 200WT 400WT(x2) 600WT SS FAT EMA

This is a very solid pedigree and this bull shows it with plenty of depth, function and bone. He ticks a lot of boxes without being extreme. He will keep you in the beef business. Just under top 10% of the breed for Hereford Prime \$ Index.



Purchaser:..... Price: \$.....

LOT 23

KOANUI START Q603

BORN 23/08/19 HB No. 0216190603P

BEECHWOOD GET STARTED 21 (P)

- OKAWA GOING 3011 (P)
- BEECHWOOD SPOT ON 239 (P)

- OKAWA MARSHALL 1103 (P)
- OKAWA LYDIA 1061 (P)
- BEECHWOOD TURK (P)
- BEECHWOOD SPOT ON 18 (P)

KOANUI LYDIA 4370 (P)

- KOANUI ROGER 1581 (P)
- KOANUI LYDIA 2017 (P)

- KOANUI RUSSIA 7012 (P)
- KOANUI DAINTY 2453 (PBM) (ET) (P)
- OKAWA BARITONE 9027 (P)
- KOANUI LYDIA 0453 (P)

\$ INDEX VALUES	
Hereford Prime	+ \$107
Beef Heifer	+ \$97
Dairy Beef	+ \$101

CALVING EASE EBVs				GROWTH & MILK EBVs				
CE DIR	CE DTRS	GEST	BWT	200	400	600	MAT	MILK
+1.0	+2.0	-1.4	+3.2	+32	+58	+82	+78	+19

FERTILITY EBVs	
SS	DTC
+3.7	-4.0

CARCASE EBVs					
CW	EMA	RIB	RUMP	RBY	IMF
+54	+3.3	+1.4	+1.8	+0.4	+0.4

Traits Observed: CE BWT 200WT(x2) 400WT(x2) 600WT SS FAT EMA Genomics

Start Q603 is one of the youngest bulls in the sale. Smooth and stylish with good carcase data. We have a lot of time for the 'Roger' daughters and note the Platinum Benchmark Dam in the pedigree.



Purchaser: Price: \$.....

LOT 24

KOANUI EXAM Q552

BORN 15/08/19 HB No. 0216190552P

KOANUI EXAM 7029 (P)

- { KOANUI EXCITEMENT 5024 (P)
- { KOANUI BLUSH 2074 (P)

- { OKAWA MARSHALL 1103 (P)
- { KOANUI MINERVA 9079 (P)
- { KOANUI SPECTRE 8365 (P)
- { KOANUI BLUSH 9148 (P)

KOANUI LEONORA 6439 (P)

- { KOANUI BRITON 4123 (P)
- { KOANUI LEONORA 3476 (P)

- { KOANUI BRITON 2044 (P)
- { KOANUI DORA 9190 (P)
- { KOANUI MANSION 0246 (P)
- { KOANUI LEONORA 6286 (SBM) (P)

\$ INDEX VALUES	
Hereford Prime	+ \$92
Beef Heifer	+ \$144
Dairy Beef	+ \$117

CALVING EASE EBVs				GROWTH & MILK EBVs				
CE DIR	CE DTRS	GEST	BWT	200	400	600	MAT	MILK
+6.5	+4.2	-1.8	+2.2	+33	+66	+86	+94	+23

FERTILITY EBVs	
SS	DTC
+3.0	-4.2

CARCASE EBVs					
CW	EMA	RIB	RUMP	RBY	IMF
+65	+2.4	+1.3	+1.9	-0.2	+0.3

Traits Observed: BWT 200WT(x2) 400WT(x2) 600WT SS FAT EMA Genomics

A moderate framed bull with lots of guts and middle, the sort of constitution required for hard country. Q522 has a very tidy balanced set of figures. A Silver Benchmark Dam on the bottom side of the pedigree.



Purchaser:..... Price: \$.....

LOT 25

KOANUI BRAVO Q227

BORN 29/07/19 HB No. 0216190227P

OTENGI BATON 484 (P)

- { OTENGI BATON 147 (P)
- { OTENGI GOLD 206 (P)

- { CRAIGMORE BATON 09173 (P)
- { OTENGI AMETHYST 1263 (P)
- { CRAIGMORE GOLD 11379 (P)
- { WAIMAIRE LEONORA 1310 (P)

KOANUI BLUSH 6457 (P)

- { KOANUI BRITON 4260 (P)
- { KOANUI BLUSH 3453 (SBM) (P)

- { KOANUI BRITON 2044 (P)
- { KOANUI ROSE 1086 (P)
- { KOANUI UNANIMOUS 0408 (BM) (P)
- { KOANUI BLUSH 8255 (P)

\$ INDEX VALUES	
Hereford Prime	+\$144
Beef Heifer	+\$147
Dairy Beef	+\$121

CALVING EASE EBVs				GROWTH & MILK EBVs				
CE DIR	CE DTRS	GEST	BWT	200	400	600	MAT	MILK
+0.9	+1.9	+1.4	+7.3	+45	+82	+119	+115	+16

FERTILITY EBVs	
SS	DTC
+3.2	-2.8

CARCASE EBVs					
CW	EMA	RIB	RUMP	RBY	IMF
+74	+3.2	+0.8	+0.5	+0.4	+1.1

Traits Observed: CE BWT 200WT(x2) 400WT(x2) 600WT SS FAT EMA Genomics

A very quiet, long and clean bull with a flat shoulder and good growth. Q227 has a Silver Benchmark Grand-Dam. He has very high \$ Indexes in the top 10% of the breed for Hereford Prime \$ Index and just under the 10% for Dairy Beef \$ Index. Homozygous Polled. Not suitable for heifers.



Purchaser:..... Price: \$.....

LOT 26

KOANUI GALLWAY Q173

BORN 26/07/19 HB No. 0216190173P

GRASSMERE GALLANT 152 (P)

- MONYMUSK GALLANT 110089 (P)
- GRASSMERE PRINCESS 826 (P)

- MATARIKI DUNSTAN (P)
- MONYMUSK DOROTHY 070083 (SBM) (P)
- OKAWA PANDA 9225 (P)
- GRASSMERE PRINCESS 706 (P)

KOANUI AMETHYST 3218 (SBM) (P)

- KOANUI UNANIMOUS 0408 (BM)
- (P)
- KOANUI AMETHYST 9279 (P)

- KOANUI UNANIMOUS 7174 (P)
- KOANUI GIRLIE 3048 (SBM) (P)
- KOANUI UNRIVALLED 6345 (P)
- KOANUI AMETHYST 4322 (P)

\$ INDEX VALUES	
Hereford Prime	+\$152
Beef Heifer	+\$152
Dairy Beef	+\$116

CALVING EASE EBVs				GROWTH & MILK EBVs				
CE DIR	CE DTRS	GEST	BWT	200	400	600	MAT	MILK
+0.4	+2.7	+1.6	+7.4	+47	+77	+116	+99	+21

FERTILITY EBVs	
SS	DTC
+3.8	-3.3

CARCASS EBVs					
CW	EMA	RIB	RUMP	RBY	IMF
+76	+5.0	+0.6	+0.1	+1.9	+0.5

Traits Observed: CE BWT 200WT(x2) 400WT(x2) 600WT SS FAT EMA IMF Genomics

Powerful and up-standing with one of the highest daily gains in the catalogue. The dam is a top Silver Benchmark Dam who has bred very well. Q173 has an outstanding pedigree with plenty of Benchmark animals and the sire, Gallant 152, is doing a top job. Very high in all three \$ Indexes and in the top 5% of the breed for Hereford Prime \$ Index. Homozygous Polled. Not suitable for heifers.



Purchaser:..... Price: \$.....

LOT 27

KOANUI GALLWAY Q313

BORN 02/08/19 HB No. 0216190313P

GRASSMERE GALLANT 152 (P)

- { MONYMUSK GALLANT 110089 (P)
- { GRASSMERE PRINCESS 826 (P)

- { MATARIKI DUNSTAN (P)
- { MONYMUSK DOROTHY 070083 (SBM) (P)
- { OKAWA PANDA 9225 (P)
- { GRASSMERE PRINCESS 706 (P)

KOANUI PRINCESS 5198 (SBM) (P)

- { KOANUI NANO 3167 (P)
- { KOANUI PRINCESS 3467 (P)

- { KOANUI UNANIMOUS 0408 (BM) (P)
- { KOANUI DAINTY 4217 (P)
- { KOANUI BOULDER 0229 (P)
- { KOANUI PRINCESS 9229 (P)

\$ INDEX VALUES	
Hereford Prime	+ \$136
Beef Heifer	+ \$172
Dairy Beef	+ \$123

CALVING EASE EBVs				GROWTH & MILK EBVs				
CE DIR	CE DTRS	GEST	BWT	200	400	600	MAT	MILK
+7.0	+4.6	+0.3	+3.9	+36	+62	+89	+71	+17

FERTILITY EBVs	
SS	DTC
+1.9	-2.5

CARCASE EBVs					
CW	EMA	RIB	RUMP	RBY	IMF
+61	+4.3	+0.4	+0.0	+1.6	+0.5

Traits Observed: CE BWT 200WT(x2) 400WT(x2) 600WT SS FAT EMA IMF Genomics

Similar breeding to the last Lot. Tremendous body with a lot of capacity and performance. A bull that will shift anywhere. Silver Benchmark Dam, Princess 5198, was unfortunately lost but she had the second top priced bull sold to Rock-end last year. Q313 has exceptional \$ Indexes, just under the 10% of the breed for every one. Homozygous Polled.



Purchaser:..... Price: \$.....

LOT 28

KOANUI XCELERATOR Q628

BORN 26/08/19 HB No. 0216190628P

KOANUI XCELERATOR 5088 (P)

- TRIARA XCELERATOR 594X (IMP CAN) (P)
- KOANUI GLORY 0303 (P)

- TRIARA UNLEASHED 893U (P)
- BET-AN 40L NANETTE 23N (P)
- KOANUI SPECTRE 8365 (P)
- KOANUI GLORY 8258 (P)

KOANUI AMETHYST 6105 (P)

- KOANUI HOOD 3135 (P)
- KOANUI AMETHYST 9281 (P)

- KOANUI UNANIMOUS 0408 (BM) (P)
- KOANUI LADY REDFIELD 7321 (P)
- KOANUI UNRIVALLED 6345 (P)
- KOANUI AMETHYST 5163 (SBM) (P)

\$ INDEX VALUES	
Hereford Prime	+\$117
Beef Heifer	+\$125
Dairy Beef	+\$107

CALVING EASE EBVs				GROWTH & MILK EBVs				
CE DIR	CE DTRS	GEST	BWT	200	400	600	MAT	MILK
+2.0	+3.8	+3.4	+5.5	+36	+67	+91	+88	+19

FERTILITY EBVs	
SS	DTC
+2.4	-3.3

CARCASS EBVs					
CW	EMA	RIB	RUMP	RBY	IMF
+60	+4.5	+0.6	+0.4	+1.7	+0.2

Traits Observed: CE BWT 200WT(x2) 400WT(x2) 600WT SS FAT EMA IMF Genomics

A grunt bull, one of the most exciting in the catalogue and one of the youngest. Very good length hip to pin. He has good growth with a pedigree that's really worked. Xcelerator 5088 has done a great job and has the best feet in the business. Homozygous Polled.



Purchaser:..... Price: \$.....

LOT 29

KOANUI BUYER Q458 (ET)

BORN 09/08/19 HB No. 0216190458P

KOANUI BYLINE 6035 (P)

- { KOANUI BYLINE 4177 (P)
- { KOANUI BLUSH 4419 (P)

KOANUI LEONORA 4116 (P)

- { ROTOITI G123 (P)
- { KOANUI LEONORA 0504 (P)

- { KOANUI BUSTLER 2040 (P)
- { KOANUI MINERVA 1025 (SBM) (P)
- { KOANUI CRUISE 1270 (P)
- { KOANUI BLUSH 2575 (P)
- { LAKE B107 (P)
- { STREAMLANDS LADY GRACEFUL 740 (SBM) (P)
- { KOANUI RUSSIA 7012 (P)
- { KOANUI LEONORA 6148 (P)

\$ INDEX VALUES	
Hereford Prime	+\$90
Beef Heifer	+\$50
Dairy Beef	+\$88

CALVING EASE EBVs				GROWTH & MILK EBVs				
CE DIR	CE DTRS	GEST	BWT	200	400	600	MAT	MILK
-2.6	+1.8	+1.4	+4.9	+39	+61	+82	+71	+18

FERTILITY EBVs	
SS	DTC
+2.4	-1.7

CARCASE EBVs					
CW	EMA	RIB	RUMP	RBV	IMF
+55	+2.9	+0.7	+0.8	+0.5	+0.3

Traits Observed: BWT 200WT 400WT(x2) 600WT SS FAT EMA IMF Genomics

An ET calf out of the best cow at Koanui. You can't go wrong with this one - depth, substance, and old school quality including rib, volume and cosmetic appeal just like his dam. Leonora 4116 is the model of the ideal cow with volume and capacity, yet very maternal and fertile. We have used three sons of 4116 in the herd - she is an exceptional breeder. Homozygous Polled.



Purchaser:..... Price: \$.....

LOT 30

KOANUI GALLWAY Q538

BORN 15/08/19 HB No. 0216190538P

GRASSMERE GALLANT 152 (P)

- { MONYMUSK GALLANT 110089 (P)
- { GRASSMERE PRINCESS 826 (P)

- { MATARIKI DUNSTAN (P)
- { MONYMUSK DOROTHY 070083 (SBM) (P)
- { OKAWA PANDA 9225 (P)
- { GRASSMERE PRINCESS 706 (P)

KOANUI IRANE 8126 (ET) (P)

- { KOANUI UNION 5050 (ET) (S)
- { KOANUI IRANE U142 (SBM) (P)

- { KOANUI UNION 2568 (P)
- { KOANUI AMETHYST T141 (SBM) (P)
- { KOANUI LEGEND P84 (BM) (P)
- { KOANUI IRANE M349 (PBM) (P)

\$ INDEX VALUES	
Hereford Prime	+\$116
Beef Heifer	+\$97
Dairy Beef	+\$113

CALVING EASE EBVs				GROWTH & MILK EBVs				
CE DIR	CE DTRS	GEST	BWT	200	400	600	MAT	MILK
+1.5	-0.1	+0.3	+4.8	+44	+65	+95	+75	+18

FERTILITY EBVs	
SS	DTC
+1.3	-0.1

CARCASS EBVs					
CW	EMA	RIB	RUMP	RYB	IMF
+67	+3.7	+1.0	+0.9	+0.7	+0.9

Traits Observed: CE BWT 200WT(x2) 400WT(x2) 600WT SS FAT EMA IMF Genomics

One of the most complete bulls in the offering. Balance and style with adequate carcass. A very good dam and family line with longevity to 12 years of age. Lots of Benchmark Dams including a Platinum and several Silver Benchmarks in the pedigree. Homozygous Polled.



Purchaser:..... Price: \$.....

LOT 31

KOANUI LANCELOT Q632

BORN 28/08/19 HB No. 0216190632P

KOANUI LANCELOT 6436 (P)

- R LEADER 6964 (IMP USA) (P)
- KOANUI MINERVA 9079 (P)

- HYALITE ON TARGET 936 (P)
- R MISS REVOLUTION 1009 (P)
- KOANUI KOOTENAY 6605 (BM) (P)
- KOANUI MINERVA 6473 (P)

KOANUI PEARL 4381 (P)

- KOANUI ULTIMATE 2071 (P)
- KOANUI PEARL 2168 (P)

- KOANUI ULTIMATE 8086 (BM) (P)
- KOANUI LYDIA 6019 (P)
- NITHDALE INTREPID 080041 (P)
- KOANUI PEARL 7170 (P)

\$ INDEX VALUES	
Hereford Prime	+\$101
Beef Heifer	+\$85
Dairy Beef	+\$99

CALVING EASE EBVs				GROWTH & MILK EBVs				
CE DIR	CE DTRS	GEST	BWT	200	400	600	MAT	MILK
+0.1	+3.1	+0.7	+4.0	+38	+58	+81	+64	+22

FERTILITY EBVs	
SS	DTC
+2.4	-3.1

CARCASE EBVs					
CW	EMA	RIB	RUMP	RBY	IMF
+52	+2.2	+0.7	+0.7	+0.1	+0.7

Traits Observed: CE BWT 200WT(x2) 400WT(x2) 600WT SS FAT EMA IMF Genomics

A top pedigree out of an exciting young dam with volume and quality. One of the youngest bull in the sale with good length and big nuts! Homozygous Polled.



Purchaser:..... Price: \$.....

LOT 32

KOANUI XCELERATOR Q583

BORN 22/08/19 HB No. 0216190583P

KOANUI XCELERATOR 5088 (P)

- TRIARA XCELERATOR 594X (IMP CAN) (P)
- KOANUI GLORY 0303 (P)

- TRIARA UNLEASHED 893U (P)
- BET-AN 40L NANETTE 23N (P)
- KOANUI SPECTRE 8365 (P)
- KOANUI GLORY 8258 (P)

KOANUI AMETHYST 6112 (P)

- KOANUI HOOD 3135 (P)
- KOANUI AMETHYST 7372 (P)

- KOANUI UNANIMOUS 0408 (BM) (P)
- KOANUI LADY REDFIELD 7321 (P)
- KOANUI DISPLAY 2569 (BM) (P)
- KOANUI AMETHYST U374 (GBM) (P)

\$ INDEX VALUES	
Hereford Prime	+ \$121
Beef Heifer	+ \$168
Dairy Beef	+ \$117

CALVING EASE EBVs				GROWTH & MILK EBVs				
CE DIR	CE DTRS	GEST	BWT	200	400	600	MAT	MILK
+6.0	+4.8	+0.4	+5.8	+43	+70	+99	+89	+23

FERTILITY EBVs	
SS	DTC
+3.2	-3.9

CARCASS EBVs					
CW	EMA	RIB	RUMP	RBY	IMF
+64	+3.3	+0.0	-0.7	+1.8	-0.4

Traits Observed: CE BWT 200WT(x2) 400WT(x2) 600WT SS FAT EMA IMF Genomics

Xcelerator Q583 has loads of potential and it will be exciting to see how he develops by sale time. He is a 3/4 brother to Q628. Very high Growth, Milk, Fertility, Carcass Weight, Retail Beef Yield% EBVs and \$ Indexes. Some important Benchmark animals in this pedigree.



Purchaser: Price: \$

LOT 33

KOANUI MIDRIB Q231

BORN 29/07/19 HB No. 0216190231P

KOANUI MIDRIB 5382 (P)

- OKAWA MARSHALL 1103 (P)
- KOANUI CYNTHIA 1112 (P)

- OKAWA DAVIS 7046 (BM) (P)
- OKAWA AMETHYST 8155 (P)
- KOANUI GOULBURN 8114 (P)
- KOANUI CYNTHIA 5645 (P)

KOANUI MINERVA 8205 (P)

- KOANUI UNLIMITED 6384 (P)
- KOANUI MINERVA 6018 (P)

- KOANUI UNANIMOUS 3152 (BM) (P)
- KOANUI IRANE U269 (GBM) (P)
- KOANUI DATIVE 4519 (P)
- KOANUI MINERVA 4386 (P)

\$ INDEX VALUES	
Hereford Prime	+\$107
Beef Heifer	+\$124
Dairy Beef	+\$110

CALVING EASE EBVs				GROWTH & MILK EBVs				
CE DIR	CE DTRS	GEST	BWT	200	400	600	MAT	MILK
+2.2	+3.9	+0.0	+3.7	+38	+68	+96	+88	+25

FERTILITY EBVs	
SS	DTC
+2.8	-3.0

CARCASE EBVs					
CW	EMA	RIB	RUMP	RBY	IMF
+68	+3.1	+0.5	+0.3	+1.1	+0.2

Traits Observed: BWT 200WT(x2) 400WT(x2) 600WT SS FAT EMA IMF

Really thrown to his dam's side with growth, length and maternal. Q231 has a kind eye and is very full in behind the shoulder. Homozygous Polled.



Purchaser:..... Price: \$.....

LOT 34

KOANUI LAYER Q181

BORN 26/07/19 HB No. 0216190181P

KOANUI LAYER 6278 (P)

- R LEADER 6964 (IMP USA) (P)
- KOANUI CYNTHIA 6099 (P)

- HYALITE ON TARGET 936 (P)
- R MISS REVOLUTION 1009 (P)
- MAHUTA AXLE (BM) (P)
- KOANUI CYNTHIA 4075 (P)

KOANUI CYNTHIA 1294 (P)

- KOANUI SPECTRE 8365 (P)
- KOANUI CYNTHIA 9556 (P)

- KOANUI SPY 5054 (ET) (P)
- KOANUI BLUSH 4606 (ET) (P)
- KOANUI ROMAN 4282 (P)
- KOANUI CYNTHIA 3354 (P)

\$ INDEX VALUES	
Hereford Prime	+\$126
Beef Heifer	+\$160
Dairy Beef	+\$117

CALVING EASE EBVs				GROWTH & MILK EBVs				
CE DIR	CE DTRS	GEST	BWT	200	400	600	MAT	MILK
+5.3	+4.7	+1.0	+5.0	+43	+68	+99	+83	+20

FERTILITY EBVs	
SS	DTC
+1.6	-2.4

CARCASS EBVs					
CW	EMA	RIB	RUMP	RBY	IMF
+64	+3.8	-0.1	-0.5	+1.6	-0.2

Traits Observed: CE BWT 200WT(x2) 400WT(x2) 600WT SS FAT EMA IMF Genomics

Lots of guts and volume and a powerful pedigree. Carcase weight and retail beef yield % EBVs say it all. Homozygous Polled.



Purchaser:..... Price: \$.....

LOT 35

KOANUI TAYLOR Q467 (ET)

BORN 10/08/19 HB No. 02161904675

KOANUI TECHNO 6179 (P)

- { KOANUI TECHNO 3062 (P)
- { KOANUI ANGEL 2392 (P)

- { KOANUI UNANIMOUS 0408 (BM) (P)
- { KOANUI BLUSH 6455 (P)
- { KOANUI SPECTRE 8365 (P)
- { KOANUI ANGEL 9249 (P)

KOANUI LEONORA 0106 (P)

- { LIMEHILLS BEDFORD 07 902 (P)
- { KOANUI LEONORA 8120 (SBM) (P)

- { OKAWA BEDFORD 01073 (P)
- { HILLSPRINGS JENNY S181 (P)
- { KOANUI UNANIMOUS 3152 (BM) (P)
- { KOANUI LEONORA 4427 (P)

\$ INDEX VALUES	
Hereford Prime	+ \$129
Beef Heifer	+ \$122
Dairy Beef	+ \$112

CALVING EASE EBVs				GROWTH & MILK EBVs				
CE DIR	CE DTRS	GEST	BWT	200	400	600	MAT	MILK
+0.4	+2.9	+0.9	+4.5	+38	+72	+99	+88	+19

FERTILITY EBVs	
SS	DTC
+3.0	-3.7

CARCASS EBVs					
CW	EMA	RIB	RUMP	RBY	IMF
+65	+2.5	+0.7	+0.6	-0.2	+1.3

Traits Observed: BWT 200WT(x2) 400WT(x2) 600WT SS FAT EMA IMF Genomics

Don't miss this bull just because of the scurs. He would be ideal over Angus cows. Very correct structure with nice bone to meat ratio. Some key Benchmark animals in this pedigree. Just under the 10% of the breed for IMF% EBV.



Purchaser:..... Price: \$.....

LOT 36

KOANUI MIDRIB Q535

BORN 14/08/19 HB No. 0216190535P

KOANUI MIDRIB 5382 (P)

- OKAWA MARSHALL 1103 (P)
- KOANUI CYNTHIA 1112 (P)

- OKAWA DAVIS 7046 (BM) (P)
- OKAWA AMETHYST 8155 (P)
- KOANUI GOULBURN 8114 (P)
- KOANUI CYNTHIA 5645 (P)

KOANUI ROSE 0257 (P)

- KOANUI UNRIVALLED 6345 (P)
- KOANUI ROSE 6209 (P)

- KOANUI UNANIMOUS 3152 (BM) (P)
- KOANUI CYNTHIA U181 (P)
- KOANUI DISPLAY 2569 (BM) (P)
- KOANUI ROSE 2172 (P)

\$ INDEX VALUES	
Hereford Prime	+\$95
Beef Heifer	+\$106
Dairy Beef	+\$104

CALVING EASE EBVs				GROWTH & MILK EBVs				
CE DIR	CE DTRS	GEST	BWT	200	400	600	MAT	MILK
+3.9	+4.6	-1.7	+1.4	+29	+46	+69	+61	+19

FERTILITY EBVs	
SS	DTC
+1.0	-2.9

CARCASS EBVs					
CW	EMA	RIB	RUMP	RBY	IMF
+53	+2.7	+1.3	+1.5	+0.3	+0.4

Traits Observed: CE BWT 200WT(x2) 400WT(x2) 600WT SS FAT EMA IMF Genomics

Nice structure with an ideal leg set that is made to last. Q535 will be good for heifer mating. Light birthweight and good fats with some key Benchmark sires in the pedigree. Homozygous Polled.



Purchaser:..... Price: \$.....

LOT 37

KOANUI BUYER Q080

BORN 22/07/19 HB No. 0216190080P

KOANUI BYLINE 6035 (P)

- { KOANUI BYLINE 4177 (P)
- { KOANUI BLUSH 4419 (P)

- { KOANUI BUSTLER 2040 (P)
- { KOANUI MINERVA 1025 (SBM) (P)
- { KOANUI CRUISE 1270 (P)
- { KOANUI BLUSH 2575 (P)

KOANUI CYNTHIA 1278 (P)

- { KOANUI UNRIVALLED 6345 (P)
- { KOANUI CYNTHIA 6065 (P)

- { KOANUI UNANIMOUS 3152 (BM) (P)
- { KOANUI CYNTHIA U181 (P)
- { KOANUI CLASS 2210 (P)
- { KOANUI CYNTHIA 1301 (P)

\$ INDEX VALUES	
Hereford Prime	+\$109
Beef Heifer	+\$78
Dairy Beef	+\$93

CALVING EASE EBVs				GROWTH & MILK EBVs				
CE DIR	CE DTRS	GEST	BWT	200	400	600	MAT	MILK
-2.5	+4.3	+0.6	+6.3	+45	+66	+91	+73	+19

FERTILITY EBVs	
SS	DTC
+1.5	-1.7

CARCASE EBVs					
CW	EMA	RIB	RUMP	RBY	IMF
+60	+3.1	+1.0	+1.1	+0.9	+0.2

Traits Observed: BWT 200WT(x2) 400WT(x2) 600WT SS FAT EMA IMF Genomics

Twin to Q079 (Lot 38). A good effort for both to make the sale. Homozygous Polled. Not suitable for heifers.



Purchaser:..... Price: \$.....

LOT 38

KOANUI BUYER Q079

BORN 22/07/19 HB No. 0216190079P

KOANUI BYLINE 6035 (P)

- KOANUI BYLINE 4177 (P)
- KOANUI BLUSH 4419 (P)

- KOANUI BUSTLER 2040 (P)
- KOANUI MINERVA 1025 (SBM) (P)
- KOANUI CRUISE 1270 (P)
- KOANUI BLUSH 2575 (P)

KOANUI CYNTHIA 1278 (P)

- KOANUI UNRIVALLED 6345 (P)
- KOANUI CYNTHIA 6065 (P)

- KOANUI UNANIMOUS 3152 (BM) (P)
- KOANUI CYNTHIA U181 (P)
- KOANUI CLASS 2210 (P)
- KOANUI CYNTHIA 1301 (P)

\$ INDEX VALUES	
Hereford Prime	+\$92
Beef Heifer	+\$61
Dairy Beef	+\$88

CALVING EASE EBVs				GROWTH & MILK EBVs				
CE DIR	CE DTRS	GEST	BWT	200	400	600	MAT	MILK
-1.9	+4.4	+1.5	+6.1	+39	+55	+78	+66	+17

FERTILITY EBVs	
SS	DTC
+1.5	-1.6

CARCASE EBVs					
CW	EMA	RIB	RUMP	RBV	IMF
+49	+3.1	+1.1	+1.4	+0.6	+0.3

Traits Observed: BWT 200WT(x2) 400WT(x2) 600WT SS FAT EMA IMF

Twin to Q080 (Lot 37) with a very good barrel. A good effort for both to make the sale. Homozygous Polled. Not suitable for heifers.



LOT 39

KOANUI BUYER Q107

BORN 23/07/19 HB No. 0216190107P

KOANUI BYLINE 6035 (P)

- { KOANUI BYLINE 4177 (P)
- { KOANUI BLUSH 4419 (P)

- { KOANUI BUSTLER 2040 (P)
- { KOANUI MINERVA 1025 (SBM) (P)
- { KOANUI CRUISE 1270 (P)
- { KOANUI BLUSH 2575 (P)

KOANUI TANIA 4543 (P)

- { KOANUI BUSTLER 2396 (P)
- { KOANUI TANIA 1248 (P)

- { KOANUI BUSTLER 8132 (P)
- { KOANUI CINDY 7038 (P)
- { LIMEHILLS BEDFORD 07 902 (P)
- { KOANUI TANIA 6059 (P)

\$ INDEX VALUES	
Hereford Prime	+\$119
Beef Heifer	+\$119
Dairy Beef	+\$109

CALVING EASE EBVs				GROWTH & MILK EBVs				
CE DIR	CE DTRS	GEST	BWT	200	400	600	MAT	MILK
+4.0	+3.6	-0.1	+2.8	+34	+63	+75	+60	+14

FERTILITY EBVs	
SS	DTC
+1.4	-2.4

CARCASE EBVs					
CW	EMA	RIB	RUMP	RBV	IMF
+55	+2.2	+1.1	+1.1	+0.2	+0.7

Traits Observed: GL CE BWT 200WT(x2) 400WT(x2) 600WT SS FAT EMA IMF Genomics

A good heifer bull, smooth shouldered with a soft skin.



Purchaser:..... Price: \$.....

LOT 40

KOANUI GALLWAY Q131

BORN 25/07/19 HB No. 0216190131P

GRASSMERE GALLANT 152 (P)

- { MONYMUSK GALLANT 110089 (P)
- { GRASSMERE PRINCESS 826 (P)

- { MATARIKI DUNSTAN (P)
- { MONYMUSK DOROTHY 070083 (SBM) (P)
- { OKAWA PANDA 9225 (P)
- { GRASSMERE PRINCESS 706 (P)

KOANUI ANGEL 5480 (P)

- { KOANUI CHEROKEE 3407 (P)
- { KOANUI ANGEL 3121 (P)

- { KOANUI CHEROKEE 9075 (BM) (P)
- { KOANUI BLUSH 0276 (SBM) (P)
- { KOANUI DISPLAY 0381 (P)
- { KOANUI ANGEL 5466 (P)

\$ INDEX VALUES	
Hereford Prime	+\$89
Beef Heifer	+\$69
Dairy Beef	+\$97

CALVING EASE EBVs				GROWTH & MILK EBVs				
CE DIR	CE DTRS	GEST	BWT	200	400	600	MAT	MILK
+3.4	+0.6	+2.4	+4.4	+30	+46	+57	+34	+20

FERTILITY EBVs	
SS	DTC
+1.3	-2.3

CARCASE EBVs					
CW	EMA	RIB	RUMP	RYB	IMF
+38	+4.0	+1.0	+0.8	+0.8	+0.5

Traits Observed: CE BWT 200WT(x2) 400WT(x2) 600WT SS FAT EMA IMF Genomics

A moderate framed bull with lots of quality and softness. He is well put together and suitable for hard country. Some good Benchmark animals in the pedigree. Homozygous Polled.



LOT 41

KOANUI START Q225

BORN 28/07/19 HB No. 0216190225P

BEECHWOOD GET STARTED 21 (P)

- OKAWA GOING 3011 (P)
- BEECHWOOD SPOT ON 239 (P)

- OKAWA MARSHALL 1103 (P)
- OKAWA LYDIA 1061 (P)
- BEECHWOOD TURK (P)
- BEECHWOOD SPOT ON 18 (P)

KOANUI HEATHER 0021 (P)

- KOANUI RUSSIA 7012 (P)
- KOANUI HEATHER 2353 (P)

- ARDO RUSSIA 468 (BM) (P)
- KOANUI LEONORA 5174 (SBM) (P)
- KOANUI ROMAN 0293 (BM) (P)
- KOANUI HEATHER 0575 (ET) (P)

\$ INDEX VALUES	
Hereford Prime	+\$95
Beef Heifer	+\$74
Dairy Beef	+\$100

CALVING EASE EBVs				GROWTH & MILK EBVs				
CE DIR	CE DTRS	GEST	BWT	200	400	600	MAT	MILK
-2.1	+1.0	-2.6	+3.7	+35	+62	+97	+98	+23

FERTILITY EBVs	
SS	DTC
+2.1	-2.1

CARCASE EBVs					
CW	EMA	RIB	RUMP	RBY	IMF
+66	+3.9	+0.7	+0.9	+1.3	+0.5

Traits Observed: CE BWT 200WT(x2) 400WT(x2) 600WT SS FAT EMA IMF Genomics

A stylish bull with a great front and plenty of growth. Short Gestation and in the top 10% of the Breed for 600 Day Growth EBV and very high for Carcase Weight and retail Beef Yield% EBVs. Homozygous Polled.



Purchaser:..... Price: \$.....

LOT 42

KOANUI START Q159

BORN 26/07/19 HB No. 0216190159P

BEECHWOOD GET STARTED 21 (P)

- OKAWA GOING 3011 (P)
- BEECHWOOD SPOT ON 239 (P)

- OKAWA MARSHALL 1103 (P)
- OKAWA LYDIA 1061 (P)
- BEECHWOOD TURK (P)
- BEECHWOOD SPOT ON 18 (P)

KOANUI CYNTHIA 4291 (P)

- KOANUI ULTIMATE 2071 (P)
- KOANUI CYNTHIA 2310 (P)

- KOANUI ULTIMATE 8086 (BM) (P)
- KOANUI LYDIA 6019 (P)
- KOANUI CHEROKEE 9075 (BM) (P)
- KOANUI CYNTHIA 9272 (P)

\$ INDEX VALUES	
Hereford Prime	+\$88
Beef Heifer	+\$80
Dairy Beef	+\$100

CALVING EASE EBVs				GROWTH & MILK EBVs				
CE DIR	CE DTRS	GEST	BWT	200	400	600	MAT	MILK
+1.4	+3.6	-0.6	-0.5	+24	+44	+63	+49	+26

FERTILITY EBVs	
SS	DTC
+1.1	-4.1

CARCASE EBVs					
CW	EMA	RIB	RUMP	RBY	IMF
+50	+2.5	+1.6	+2.2	-0.3	+0.9

Traits Observed: CE BWT 200WT(x2) 400WT(x2) 600WT SS FAT EMA IMF Genomics

Super easy doing for the hardest of country on moderate frame but with depth and guts. Low Birth weight, exceptional Milk and very good Fat EBVs.



Purchaser:..... Price: \$.....

LOT 43

KOANUI TAYLOR Q198

BORN 27/07/19 HB No. 0216190198P

KOANUI TECHNO 6179 (P)

- ⎵ KOANUI TECHNO 3062 (P)
- ⎵ KOANUI ANGEL 2392 (P)

- ⎵ KOANUI UNANIMOUS 0408 (BM) (P)
- ⎵ KOANUI BLUSH 6455 (P)
- ⎵ KOANUI SPECTRE 8365 (P)
- ⎵ KOANUI ANGEL 9249 (P)

KOANUI PEARL 2152 (P)

- ⎵ KOANUI CHEROKEE 9075 (BM) (P)
- ⎵ KOANUI PEARL 9061 (P)

- ⎵ LIMEHILLS CHIEFTON 680 (P)
- ⎵ KOANUI CYNTHIA U274 (GBM) (P)
- ⎵ SBP JAMAICA 06 0725 (P)
- ⎵ KOANUI PEARL 4151 (P)

\$ INDEX VALUES	
Hereford Prime	+ \$124
Beef Heifer	+ \$98
Dairy Beef	+ \$101

CALVING EASE EBVs				GROWTH & MILK EBVs				
CE DIR	CE DTRS	GEST	BWT	200	400	600	MAT	MILK
-2.0	+0.1	+1.3	+7.0	+38	+68	+104	+95	+21

FERTILITY EBVs	
SS	DTC
+3.2	-4.6

CARCASE EBVs					
CW	EMA	RIB	RUMP	RBY	IMF
+59	+3.0	+0.8	+0.8	+0.7	+0.7

Traits Observed: GL CE BWT 200WT(x2) 400WT(x2) 600WT SS FAT EMA IMF

A gentle giant. A real growth bull to add dimension and attractive cosmetics to your programme. By the Techno son sold to Martin (RIP) and Mary Taylor hence the name. Several Benchmark animals in this pedigree. Good Growth and Fertility EBVs. Not suitable for heifers.



Purchaser:..... Price: \$.....

LOT 44

KOANUI ATOM Q132

BORN 25/07/19 HB No. 0216190132P

KOKONGA ANZAC 7017 (P)

INJEMIRA ANZAC K220 (IMP AUS)
{ (P)
OKAWA CYNTHIA 0234 (P)

{ ALLENDALE ANZAC E114 (P) (P)
INJEMIRA PLUM E212 (P) (P)
OKAWA ADMIRAL 6229 (P)
OKAWA CYNTHIA 0078 (SBM) (P)

KOANUI GLORY 6235 (P)

{ KOANUI CHEROKEE 3407 (P)
KOANUI GLORY 2041 (P)

{ KOANUI CHEROKEE 9075 (BM) (P)
KOANUI BLUSH 0276 (SBM) (P)
KOANUI BUSTLER 8132 (P)
KOANUI GLORY 7147 (P)

\$ INDEX VALUES	
Hereford Prime	+\$110
Beef Heifer	+\$77
Dairy Beef	+\$91

CALVING EASE EBVs				GROWTH & MILK EBVs				
CE DIR	CE DTRS	GEST	BWT	200	400	600	MAT	MILK
-4.2	+1.5	+0.7	+5.6	+43	+72	+103	+95	+24

FERTILITY EBVs	
SS	DTC
+2.0	-4.8

CARCASS EBVs					
CW	EMA	RIB	RUMP	RBY	IMF
+68	+2.6	+0.5	+0.3	+0.8	+0.2

Traits Observed: CE BWT 200WT(x2) 400WT(x2) 600WT SS FAT EMA IMF Genomics

Tremendous length and performance. Atom Q132 is a powerful young sire and the second highest daily gain at 600-days. He will breed outstanding weaners. We have retained a half-brother to this bull in herd. He is in the top 10% of the breed for all the Growth EBVs. Homozygous Polled. Not suitable for heifers.



Purchaser:..... Price: \$.....

LOT 45

KOANUI GALLWAY Q049

BORN 22/07/19 HB No. 0216190049P

GRASSMERE GALLANT 152 (P)

- { MONYMUSK GALLANT 110089 (P)
- { GRASSMERE PRINCESS 826 (P)

- { MATARIKI DUNSTAN (P)
- { MONYMUSK DOROTHY 070083 (SBM) (P)
- { OKAWA PANDA 9225 (P)
- { GRASSMERE PRINCESS 706 (P)

KOANUI DAINTY 1542 (P)

- { KOANUI CAPTAIN 8624 (P)
- { KOANUI DAINTY 8432 (SBM) (P)

- { KOANUI CLAMOR 2171 (P)
- { KOANUI BLUSH U290 (SBM) (P)
- { KOANUI UNANIMOUS 3152 (BM) (P)
- { KOANUI DAINTY 2453 (PBM) (ET) (P)

\$ INDEX VALUES	
Hereford Prime	+\$125
Beef Heifer	+\$125
Dairy Beef	+\$116

CALVING EASE EBVs				GROWTH & MILK EBVs				
CE DIR	CE DTRS	GEST	BWT	200	400	600	MAT	MILK
+3.3	+1.1	+1.2	+4.1	+41	+64	+97	+76	+19

FERTILITY EBVs	
SS	DTC
+2.2	-0.8

CARCASS EBVs					
CW	EMA	RIB	RUMP	RYB	IMF
+71	+4.2	-0.1	-0.7	+1.8	+0.3

Traits Observed: CE BWT 200WT(x2) 400WT(x2) 600WT SS FAT EMA IMF Genomics

A very correct bull with the depth and quality to make a top sire. Very docile with a kind eye, nothing will faze this guy. Dam was a top breeder. This is a powerful pedigree with a very good female line. A very safe bull that will keep you in the beef business. In the top 10% of the breed for carcass weight and Retail Beef Yield% EBVs, traits that count! Homozygous Polled.



Purchaser:..... Price: \$.....

LOT 46

KOANUI XCELERATOR Q588

BORN 23/08/19 HB No. 0216190588P

<p>KOANUI XCELERATOR 5088 (P)</p>	}	<p>TRIARA XCELERATOR 594X (IMP CAN) (P)</p> <p>KOANUI GLORY 0303 (P)</p>	}	<p>TRIARA UNLEASHED 893U (P)</p> <p>BET-AN 40L NANETTE 23N (P)</p> <p>KOANUI SPECTRE 8365 (P)</p> <p>KOANUI GLORY 8258 (P)</p>
<p>KOANUI GIRLIE 6282 (P)</p>	}	<p>KOANUI CAPTAIN 4192 (P)</p> <p>KOANUI GIRLIE 4338 (P)</p>	}	<p>KOANUI CAPTAIN 1464 (P)</p> <p>KOANUI LOTTIE 2389 (P)</p> <p>KOANUI USURPER 1322 (P)</p> <p>KOANUI GIRLIE 4141 (P)</p>

\$ INDEX VALUES	
Hereford Prime	+ \$145
Beef Heifer	+ \$161
Dairy Beef	+ \$118

CALVING EASE EBVs				GROWTH & MILK EBVs				
CE DIR	CE DTRS	GEST	BWT	200	400	600	MAT	MILK
+4.2	+3.6	+1.0	+6.6	+43	+75	+101	+82	+17

FERTILITY EBVs	
SS	DTC
+3.8	-3.1

CARCASE EBVs					
CW	EMA	RIB	RUMP	RBY	IMF
+65	+4.3	+0.9	+0.4	+1.0	+0.5

Traits Observed: CE BWT 200WT(x2) 400WT(x2) 600WT SS FAT EMA IMF Genomics

Q588 is a bull with balance, carcase and impeccable feet. This is a top genetic package with calving ease and performance and a very correct phenotype. His sire, Xcelerator 5088, is doing an exceptional job with functionality and style. Q588 is in the top 10% of the breed for the Growth and scrotal size EBVs and Hereford Prime \$ Index. Homozygous Polled.



Purchaser: Price: \$

LOT 47

KOANUI START Q235

BORN 29/07/19 HB No. 0216190235P

BEECHWOOD GET STARTED 21 (P)

- { OKAWA GOING 3011 (P)
- { BEECHWOOD SPOT ON 239 (P)

- { OKAWA MARSHALL 1103 (P)
- { OKAWA LYDIA 1061 (P)
- { BEECHWOOD TURK (P)
- { BEECHWOOD SPOT ON 18 (P)

KOANUI ROSE 2108 (P)

- { KOANUI CAPTAIN 8624 (P)
- { KOANUI ROSE 5108 (P)

- { KOANUI CLAMOR 2171 (P)
- { KOANUI BLUSH U290 (SBM) (P)
- { KOANUI DAYBREAK 0185 (BM) (P)
- { KOANUI ROSE 2337 (P)

\$ INDEX VALUES	
Hereford Prime	+ \$78
Beef Heifer	+ \$58
Dairy Beef	+ \$91

CALVING EASE EBVs				GROWTH & MILK EBVs				
CE DIR	CE DTRS	GEST	BWT	200	400	600	MAT	MILK
-0.5	+0.8	+0.1	+3.0	+31	+55	+81	+83	+20

FERTILITY EBVs	
SS	DTC
+2.2	-2.1

CARCASS EBVs					
CW	EMA	RIB	RUMP	RBY	IMF
+55	+3.7	-0.3	-0.7	+1.9	-0.6

Traits Observed: GL CE BWT 200WT(x2) 400WT(x2) 600WT SS FAT EMA IMF Genomics

Start Q235 has a bit much white but his quality makes up for the cosmetics and his dam is a very good cow. Homozygous Polled.



Purchaser: Price: \$

LOT 48

KOANUI EXCITMENT Q425

BORN 08/08/19 HB No. 0216190425P

KOANUI EXCITEMENT 5024 (P)

- OKAWA MARSHALL 1103 (P)
- KOANUI MINERVA 9079 (P)

- OKAWA DAVIS 7046 (BM) (P)
- OKAWA AMETHYST 8155 (P)
- KOANUI KOOTENAY 6605 (BM) (P)
- KOANUI MINERVA 6473 (P)

KOANUI GIRLIE 5255 (P)

- BEECHWOOD BIG TIME (P)
- KOANUI GIRLIE 7258 (P)

- BEECHWOOD TURK (P)
- BEECHWOOD SPOT ON 14 (P)
- KOANUI SPY 5054 (ET) (P)
- KOANUI GIRLIE 4141 (P)

\$ INDEX VALUES	
Hereford Prime	+\$96
Beef Heifer	+\$89
Dairy Beef	+\$98

CALVING EASE EBVs				GROWTH & MILK EBVs				
CE DIR	CE DTRS	GEST	BWT	200	400	600	MAT	MILK
-0.6	+0.5	-1.4	+7.4	+41	+70	+102	+106	+23

FERTILITY EBVs	
SS	DTC
+2.5	-4.2

CARCASS EBVs					
CW	EMA	RIB	RUMP	RBY	IMF
+58	+3.1	+0.9	+0.9	+0.7	-0.1

Traits Observed: CE BWT 200WT(x2) 400WT(x2) 600WT SS FAT EMA IMF Genomics

Excitement Q425 is a performance bull with great depth and he is very solid maternally so will produce very productive females with volume. Top 10% of the breed for Growth and Milk EBVs. Homozygous Polled. Not suitable for heifers.



LOT 49

KOANUI XCELERATOR Q426

BORN 08/08/19 HB No. 0216190426P

KOANUI XCELERATOR 5088 (P)

- TRIARA XCELERATOR 594X (IMP CAN) (P)
- KOANUI GLORY 0303 (P)

- TRIARA UNLEASHED 893U (P)
- BET-AN 40L NANETTE 23N (P)
- KOANUI SPECTRE 8365 (P)
- KOANUI GLORY 8258 (P)

KOANUI ANGEL 6340 (P)

- KOANUI HOOD 3135 (P)
- KOANUI ANGEL 8486 (P)

- KOANUI UNANIMOUS 0408 (BM) (P)
- KOANUI LADY REDFIELD 7321 (P)
- KOANUI UNANIMOUS 3152 (BM) (P)
- KOANUI ANGEL 2314 (P)

\$ INDEX VALUES	
Hereford Prime	+\$111
Beef Heifer	+\$156
Dairy Beef	+\$111

CALVING EASE EBVs				GROWTH & MILK EBVs				
CE DIR	CE DTRS	GEST	BWT	200	400	600	MAT	MILK
+7.9	+6.4	+1.4	+3.3	+31	+59	+73	+59	+17

FERTILITY EBVs	
SS	DTC
+1.1	-2.7

CARCASE EBVs					
CW	EMA	RIB	RUMP	RBV	IMF
+54	+4.0	+0.9	+0.8	+1.5	-0.5

Traits Observed: CE BWT 200WT(x2) 400WT(x2) 600WT SS FAT EMA IMF Genomics

Xcelerator Q426 is a carcase bull with high calving ease. Very high Retail Beef Yield % EBV. Homozygous Polled.



Purchaser:..... Price: \$.....

LOT 50

KOANUI MIDRIB Q511

BORN 12/08/19 HB No. 0216190511P

KOANUI MIDRIB 5382 (P)

- OKAWA MARSHALL 1103 (P)
- KOANUI CYNTHIA 1112 (P)

- OKAWA DAVIS 7046 (BM) (P)
- OKAWA AMETHYST 8155 (P)
- KOANUI GOULBURN 8114 (P)
- KOANUI CYNTHIA 5645 (P)

KOANUI LEONORA 5113 (P)

- CRAIGMORE BARITONE 120305 (P)
- KOANUI LEONORA 9098 (P)

- OKAWA BARITONE 9177 (P)
- CRAIGMORE CYNTHIA 07091 (SBM) (P)
- KOANUI UNIQUE 6294 (P)
- KOANUI LEONORA 4427 (P)

\$ INDEX VALUES	
Hereford Prime	+\$102
Beef Heifer	+\$113
Dairy Beef	+\$110

CALVING EASE EBVs				GROWTH & MILK EBVs				
CE DIR	CE DTRS	GEST	BWT	200	400	600	MAT	MILK
+3.3	+1.6	+1.3	+1.7	+29	+64	+87	+81	+24

FERTILITY EBVs	
SS	DTC
+2.6	-3.3

CARCASS EBVs					
CW	EMA	RIB	RUMP	RBV	IMF
+67	+3.2	+0.6	+0.7	+0.9	+0.2

Traits Observed: CE BWT 200WT(x2) 400WT(x2) 600WT SS FAT EMA IMF Genomics

A very stylish bull with a flat bone and shoulder, ideal for heifer mating. A nice balance of figures for replacement heifers. Low Birth Weight EBVs and high Milk and Carcass Weight. Homozygous Polled.



Purchaser:..... Price: \$.....

LOT 51

KOANUI KAHUNA Q122

BORN 23/07/19 HB No. 0216190122P

YAVENVALE KAHUNA K115 (IMP AUS) (P)

CB 57U CAN DOO 102Y (IMP CAN) (P)
 { YAVENVALE LOCHIEL LADY D488 (P) (P)

{ RVP STAR 533P CAN-AM ET 57U (P)
 HF 74M LIMELIGHT LADY 42P (P)
 { WOLBULL FAME 3 B521 (AI) (S) (P)
 YAVENVALE LOCHIEL LADY B404 (H) (H)

KOANUI IRANE 4408 (P)

{ KOANUI CHEROKEE 9075 (BM) (P)
 KOANUI IRANE 0597 (P)

{ LIMEHILLS CHIEFTON 680 (P)
 KOANUI CYNTHIA U274 (GBM) (P)
 { LIMEHILLS BEDFORD 07 902 (P)
 KOANUI IRANE 7005 (ET) (P)

\$ INDEX VALUES	
Hereford Prime	+\$153
Beef Heifer	+\$173
Dairy Beef	+\$129

CALVING EASE EBVs				GROWTH & MILK EBVs				
CE DIR	CE DTRS	GEST	BWT	200	400	600	MAT	MILK
+3.6	+5.1	-1.4	+5.2	+43	+62	+102	+71	+24

FERTILITY EBVs	
SS	DTC
+1.1	-3.6

CARCASS EBVs					
CW	EMA	RIB	RUMP	RYB	IMF
+64	+0.7	+1.0	+0.4	-0.1	+2.0

Traits Observed: GL CE BWT 200WT(x2) 400WT(x2) 600WT SS FAT EMA IMF Genomics

Q122 is one of our best Kahuna sons with a good body. His dam is a very attractive and good bodied female with cosmetic appeal. Extremely high in every \$ Index and in the top 5% of the breed for Hereford Prime and Dairy Beef \$ Indexes. Top 5% of the breed for IMF% EBV. Homozygous Polled.



Purchaser:..... Price: \$.....

LOT 52

KOANUI EXCITMENT Q353

BORN 04/08/19 HB No. 0216190353P

KOANUI EXCITEMENT 5024 (P)

- OKAWA MARSHALL 1103 (P)
- KOANUI MINERVA 9079 (P)

- OKAWA DAVIS 7046 (BM) (P)
- OKAWA AMETHYST 8155 (P)
- KOANUI KOOTENAY 6605 (BM) (P)
- KOANUI MINERVA 6473 (P)

KOANUI PEARL 4214 (P)

- KOANUI BUSTLER 2195 (P)
- KOANUI PEARL 2090 (P)

- KOANUI BUSTLER 8132 (P)
- KOANUI DORA 4102 (P)
- WAIMAIRE BOURBON 101 (P)
- KOANUI PEARL 6234 (P)

\$ INDEX VALUES	
Hereford Prime	+\$77
Beef Heifer	+\$64
Dairy Beef	+\$95

CALVING EASE EBVs				GROWTH & MILK EBVs				
CE DIR	CE DTRS	GEST	BWT	200	400	600	MAT	MILK
-0.1	+0.3	-1.7	+3.0	+31	+55	+81	+78	+27

FERTILITY EBVs	
SS	DTC
+1.2	-4.0

CARCASE EBVs					
CW	EMA	RIB	RUMP	RBV	IMF
+54	+2.6	+1.5	+2.0	+0.1	+0.3

Traits Observed: GL CE BWT 200WT(x2) 400WT(x2) 600WT SS FAT EMA IMF Genomics

Typical of the Excitement sons with strong cosmetics and maternal power on impeccable feet. Homozygous Polled.



Purchaser:..... Price: \$.....

LOT 53

KOANUI START Q685

BORN 06/09/19 HB No. 0216190685P

BEECHWOOD GET STARTED 21 (P)

- OKAWA GOING 3011 (P)
- BEECHWOOD SPOT ON 239 (P)

- OKAWA MARSHALL 1103 (P)
- OKAWA LYDIA 1061 (P)
- BEECHWOOD TURK (P)
- BEECHWOOD SPOT ON 18 (P)

KOANUI PEARL 8388 (GBM) (P)

- KOANUI BATON 6187 (BM) (P)
- KOANUI PEARL 6107 (P)

- MATARIKI BUSTLER (P)
- KOANUI ANGEL 3171 (P)
- KOANUI UNION 2568 (P)
- KOANUI PEARL 2470 (ET) (P)

\$ INDEX VALUES	
Hereford Prime	+ \$107
Beef Heifer	+ \$122
Dairy Beef	+ \$113

CALVING EASE EBVs				GROWTH & MILK EBVs				
CE DIR	CE DTRS	GEST	BWT	200	400	600	MAT	MILK
+1.0	+3.4	-0.9	+3.6	+39	+66	+108	+108	+23

FERTILITY EBVs	
SS	DTC
+2.7	-2.5

CARCASE EBVs					
CW	EMA	RIB	RUMP	RBY	IMF
+74	+2.2	+0.5	+0.7	+0.4	+0.6

Traits Observed: CE BWT 200WT(x2) 400WT(x2) 600WT SS FAT EMA IMF Genomics

The growthiest bull in the sale and the highest daily gainer. This bull is really pushing the boundaries for length and growth with an amazing spread of figures. His dam, Pearl 8388, is one of our best, a donor cow and still going strong at 13 years of age. She is a Gold Benchmark dam and the dam of herd sire Koanui Legend 7109. Q685 is in the top 5% of the breed for 600-Day Growth and Carcase Weight EBVs.



Purchaser: Price: \$.....

LOT 54

KOANUI START Q109

BORN 23/07/19 HB No. 0216190109P

BEECHWOOD GET STARTED 21 (P)

- OKAWA GOING 3011 (P)
- BEECHWOOD SPOT ON 239 (P)

- OKAWA MARSHALL 1103 (P)
- OKAWA LYDIA 1061 (P)
- BEECHWOOD TURK (P)
- BEECHWOOD SPOT ON 18 (P)

KOANUI GIRL 3397 (P)

- ORARI GORGE K2 100035 (P)
- KOANUI GIRL 0294 (P)

- NITHDALE HOWARD 070115 (P)
- NITHDALE LESLIE 0310 (GBM) (P)
- PINECROFT WRANGLER 0726 (P)
- KOANUI GIRL 0149 (P)

\$ INDEX VALUES	
Hereford Prime	+\$99
Beef Heifer	+\$80
Dairy Beef	+\$97

CALVING EASE EBVs				GROWTH & MILK EBVs				
CE DIR	CE DTRS	GEST	BWT	200	400	600	MAT	MILK
+0.7	+0.9	-0.7	+3.5	+30	+50	+79	+66	+22

FERTILITY EBVs	
SS	DTC
+3.1	-3.6

CARCASE EBVs					
CW	EMA	RIB	RUMP	RBV	IMF
+47	+2.6	+1.0	+1.6	+0.4	+0.5

Traits Observed: CE BWT 200WT(x2) 400WT(x2) 600WT SS FAT EMA IMF Genomics

Tremendous body and barrel, this bull is ideal for hard country and a great bull to go over angus cows for maximizing that hybrid vigour. Homozygous Polled.



Purchaser:..... Price: \$.....

LOT 55

KOANUI LANCELOT Q581

BORN 21/08/19 HB No. 0216190581P

KOANUI LANCELOT 6436 (P)

- R LEADER 6964 (IMP USA) (P)
- KOANUI MINERVA 9079 (P)

- HYALITE ON TARGET 936 (P)
- R MISS REVOLUTION 1009 (P)
- KOANUI KOOTENAY 6605 (BM) (P)
- KOANUI MINERVA 6473 (P)

KOANUI CYNTHIA 5465 (P)

- BEECHWOOD BIG TIME (P)
- KOANUI CYNTHIA 7234 (P)

- BEECHWOOD TURK (P)
- BEECHWOOD SPOT ON 14 (P)
- MAHUTA AXLE (BM) (P)
- KOANUI CYNTHIA 3007 (ET) (P)

\$ INDEX VALUES	
Hereford Prime	+ \$106
Beef Heifer	+ \$145
Dairy Beef	+ \$112

CALVING EASE EBVs				GROWTH & MILK EBVs				
CE DIR	CE DTRS	GEST	BWT	200	400	600	MAT	MILK
+5.7	+4.8	-2.0	+3.1	+33	+59	+81	+77	+23

FERTILITY EBVs	
SS	DTC
+2.9	-4.7

CARCASE EBVs					
CW	EMA	RIB	RUMP	RBY	IMF
+53	+3.6	+0.8	+1.0	+0.9	+0.0

Traits Observed: CE BWT 200WT(x2) 400WT(x2) 600WT SS FAT EMA IMF Genomics

Very attractive with a nice profile plus a strong pedigree and a good balance of figures. Exceptional Fertility and Milk EBVs. This bull will breed great progeny. Homozygous Polled.



Purchaser:..... Price: \$.....

LOT 56

KOANUI GALLWAY Q385

BORN 05/08/19 HB No. 02161903855

GRASSMERE GALLANT 152 (P)

- { MONYMUSK GALLANT 110089 (P)
- { GRASSMERE PRINCESS 826 (P)

- { MATARIKI DUNSTAN (P)
- { MONYMUSK DOROTHY 070083 (SBM) (P)
- { OKAWA PANDA 9225 (P)
- { GRASSMERE PRINCESS 706 (P)

KOANUI AMETHYST 3474 (P)

- { KOANUI BOULDER 0229 (P)
- { KOANUI AMETHYST 7372 (P)

- { KOANUI BOULDER 7050 (ET) (P)
- { KOANUI BLUSH 6081 (P)
- { KOANUI DISPLAY 2569 (BM) (P)
- { KOANUI AMETHYST U374 (GBM) (P)

\$ INDEX VALUES	
Hereford Prime	+ \$99
Beef Heifer	+ \$136
Dairy Beef	+ \$110

CALVING EASE EBVs				GROWTH & MILK EBVs				
CE DIR	CE DTRS	GEST	BWT	200	400	600	MAT	MILK
+7.9	+6.2	-0.6	+2.1	+26	+42	+57	+40	+18

FERTILITY EBVs	
SS	DTC
+2.7	-3.0

CARCASE EBVs					
CW	EMA	RIB	RUMP	RBY	IMF
+37	+2.7	+0.6	+0.1	+0.9	+0.5

Traits Observed: CE BWT 200WT(x2) 400WT(x2) 600WT SS FAT EMA IMF Genomics

Very well put together with smoothness and meat. Excellent calving ease and some key Benchmark animals in the pedigree. Scurs.



Purchaser: Price: \$

LOT 57

KOANUI BRAVO Q431

BORN 08/08/19 HB No. 0216190431P

OTENGI BATON 484 (P)

- { OTENGI BATON 147 (P)
- { OTENGI GOLD 206 (P)

- { CRAIGMORE BATON 09173 (P)
- { OTENGI AMETHYST 1263 (P)
- { CRAIGMORE GOLD 11379 (P)
- { WAIMAIRE LEONORA 1310 (P)

KOANUI PRINCESS 6353 (P)

- { KOANUI MARSHALL 4164 (P)
- { KOANUI PRINCESS 3320 (SBM) (P)

- { OKAWA MARSHALL 1103 (P)
- { KOANUI IRANE 4085 (P)
- { KOANUI UNANIMOUS 0408 (BM) (P)
- { KOANUI PRINCESS 5477 (SBM) (P)

\$ INDEX VALUES	
Hereford Prime	+ \$135
Beef Heifer	+ \$153
Dairy Beef	+ \$115

CALVING EASE EBVs				GROWTH & MILK EBVs				
CE DIR	CE DTRS	GEST	BWT	200	400	600	MAT	MILK
+6.4	+3.8	-0.3	+1.8	+29	+50	+70	+41	+21

FERTILITY EBVs	
SS	DTC
+2.9	-5.1

CARCASE EBVs					
CW	EMA	RIB	RUMP	RBY	IMF
+51	+3.2	+1.6	+1.8	+0.3	+0.9

Traits Observed: CE BWT 200WT(x2) 400WT(x2) 600WT SS FAT EMA IMF Genomics

Bravo Q431 missed out on the cosmetics with the red but he is too good not to be included in the sale. Plenty of Benchmark animals in the bottom side of this pedigree. The sire, Otengi Baton 484, has bred very well with two sons used in the herd this year, he is at the very top end of the breed. Q431 is very high in all three \$ Indexes, in the top 10% for Hereford Prime and just under for Beef Heifer and Dairy Beef indexes.



Purchaser:..... Price: \$.....

LOT 58

KOANUI START Q434

BORN 08/08/19 HB No. 0216190434P

BEECHWOOD GET STARTED 21 (P)

- OKAWA GOING 3011 (P)
- BEECHWOOD SPOT ON 239 (P)

- OKAWA MARSHALL 1103 (P)
- OKAWA LYDIA 1061 (P)
- BEECHWOOD TURK (P)
- BEECHWOOD SPOT ON 18 (P)

KOANUI GIRLIE 5463 (P)

- KOANUI BUSTLER 2541 (P)
- KOANUI GIRLIE 0310 (P)

- KOANUI BUSTLER 8132 (P)
- KOANUI CYNTHIA 5508 (BM) (P)
- LIMEHILLS BEDFORD 07 902 (P)
- KOANUI GIRLIE 8610 (P)

\$ INDEX VALUES	
Hereford Prime	+\$101
Beef Heifer	+\$58
Dairy Beef	+\$93

CALVING EASE EBVs				GROWTH & MILK EBVs				
CE DIR	CE DTRS	GEST	BWT	200	400	600	MAT	MILK
-4.4	+1.8	-1.8	+4.1	+37	+65	+90	+85	+21

FERTILITY EBVs	
SS	DTC
+2.1	-2.6

CARCASE EBVs					
CW	EMA	RIB	RUMP	RYB	IMF
+63	+3.9	+0.8	+1.2	+0.8	+0.9

Traits Observed: CE BWT 200WT(x2) 400WT(x2) 600WT SS FAT EMA IMF Genomics

A bull with a good balance both to look at and in his data set. Good hip to pin. High Growth, Milk and Carcase weight EBVs. Homozygous Polled.



Purchaser:..... Price: \$.....

LOT 59

KOANUI GALLWAY Q223

BORN 28/07/19 HB No. 0216190223P

GRASSMERE GALLANT 152 (P)

- MONYMUSK GALLANT 110089 (P)
- GRASSMERE PRINCESS 826 (P)

- MATARIKI DUNSTAN (P)
- MONYMUSK DOROTHY 070083 (SBM) (P)
- OKAWA PANDA 9225 (P)
- GRASSMERE PRINCESS 706 (P)

KOANUI MINERVA 3290 (SBM) (P)

- KOANUI UNIT 1442 (P)
- KOANUI MINERVA 0301 (P)

- KOANUI UPPER 9102 (P)
- KOANUI LEONORA 8049 (SBM) (P)
- KOANUI SPECTRE 8365 (P)
- KOANUI MINERVA 8205 (P)

\$ INDEX VALUES	
Hereford Prime	+\$89
Beef Heifer	+\$119
Dairy Beef	+\$112

CALVING EASE EBVs				GROWTH & MILK EBVs				
CE DIR	CE DTRS	GEST	BWT	200	400	600	MAT	MILK
+7.0	+5.2	-1.2	+0.7	+25	+47	+58	+44	+21

FERTILITY EBVs	
SS	DTC
+1.4	-1.3

CARCASS EBVs					
CW	EMA	RIB	RUMP	RBV	IMF
+49	+5.0	+1.4	+1.5	+1.0	+0.7

Traits Observed: CE BWT 200WT(x2) 400WT(x2) 600WT SS FAT EMA IMF Genomics

An easy bull to like but not too big. Gallway Q223 is very quiet, easy doing and has good Fat depth and Eye Muscle Area EBVs. A quality dark coloured bull. Out of a Silver Benchmark Dam and several Silver Benchmark dams in the pedigree. Homozygous Polled. A very good calving ease option.



Purchaser:..... Price: \$.....

LOT 60

KOANUI LANCELOT Q395

BORN 06/08/19 HB No. 0216190395P

KOANUI LANCELOT 6436 (P)

- { R LEADER 6964 (IMP USA) (P)
- { KOANUI MINERVA 9079 (P)

- { HYALITE ON TARGET 936 (P)
- { R MISS REVOLUTION 1009 (P)
- { KOANUI KOOTENAY 6605 (BM) (P)
- { KOANUI MINERVA 6473 (P)

KOANUI BLUSH 2074 (P)

- { KOANUI SPECTRE 8365 (P)
- { KOANUI BLUSH 9148 (P)

- { KOANUI SPY 5054 (ET) (P)
- { KOANUI BLUSH 4606 (ET) (P)
- { KOANUI RUSSIA 7012 (P)
- { KOANUI BLUSH 7026 (SBM) (ET) (P)

\$ INDEX VALUES	
Hereford Prime	+ \$120
Beef Heifer	+ \$139
Dairy Beef	+ \$111

CALVING EASE EBVs				GROWTH & MILK EBVs				
CE DIR	CE DTRS	GEST	BWT	200	400	600	MAT	MILK
+3.0	+4.2	+0.1	+3.2	+39	+69	+90	+75	+27

FERTILITY EBVs	
SS	DTC
+4.5	-4.9

CARCASE EBVs					
CW	EMA	RIB	RUMP	RBY	IMF
+64	+3.6	+1.0	+1.4	+0.7	+0.2

Traits Observed: CE BWT 200WT(x2) 400WT(x2) 600WT SS FAT EMA IMF Genomics

Lancelot Q395 has a good set of figures with plenty of fertility and milk. He stood out as a calf and is out of a very good cow. Like anything with Leader in the pedigree, Lancelot is a real carcase bull. You won't miss breeding top calves with this pedigree. Homozygous Polled.



Purchaser: Price: \$

LOT 61

KOANUI INDEX Q283

BORN 31/07/19 HB No. 0216190283P

CRAIGMORE IDOL 170325 (P)

- { CRAIGMORE IKE 140260 (P)
- { CRAIGMORE LEONORA 140118 (P)

- { KAIRURU IKE 110006 (P)
- { CRAIGMORE CYNTHIA 11033 (P)
- { CRAIGMORE IDEA 10263 (P)
- { CRAIGMORE LEONORA 05016 (P)

KOANUI CINDY 1524 (P)

- { KOANUI CAPTAIN 8624 (P)
- { KOANUI CINDY 8278 (P)

- { KOANUI CLAMOR 2171 (P)
- { KOANUI BLUSH U290 (SBM) (P)
- { KOANUI DISPLAY 5588 (ET) (P)
- { KOANUI CINDY 5451 (P)

\$ INDEX VALUES	
Hereford Prime	+\$106
Beef Heifer	+\$70
Dairy Beef	+\$99

CALVING EASE EBVs				GROWTH & MILK EBVs				
CE DIR	CE DTRS	GEST	BWT	200	400	600	MAT	MILK
-1.2	-1.0	+2.3	+3.1	+39	+69	+93	+83	+17

FERTILITY EBVs	
SS	DTC
+1.5	-1.1

CARCASS EBVs					
CW	EMA	RIB	RUMP	RBY	IMF
+71	+4.0	-0.1	-0.4	+1.6	-0.1

Traits Observed: GL CE BWT 200WT(x2) 400WT(x2) 600WT SS FAT EMA IMF Genomics

A bull with slightly more bone and plenty of growth. Out of a very good cow who is still going strong at 10 years of age. Pedigree on the dam's side is laden with Benchmark animals. Homozygous Polled.



Purchaser:..... Price: \$.....

LOT 62

KOANUI BRAVO Q531

BORN 14/08/19 HB No. 0216190531P

OTENGI BATON 484 (P)

- { OTENGI BATON 147 (P)
- { OTENGI GOLD 206 (P)

- { CRAIGMORE BATON 09173 (P)
- { OTENGI AMETHYST 1263 (P)
- { CRAIGMORE GOLD 11379 (P)
- { WAIMAIRE LEONORA 1310 (P)

KOANUI PEARL 6280 (P)

- { KOANUI CHEROKEE 3407 (P)
- { KOANUI PEARL 2436 (P)

- { KOANUI CHEROKEE 9075 (BM) (P)
- { KOANUI BLUSH 0276 (SBM) (P)
- { KOANUI ULTIMATE 8086 (BM) (P)
- { KOANUI PEARL 5460 (P)

\$ INDEX VALUES	
Hereford Prime	+ \$117
Beef Heifer	+ \$78
Dairy Beef	+ \$99

CALVING EASE EBVs				GROWTH & MILK EBVs				
CE DIR	CE DTRS	GEST	BWT	200	400	600	MAT	MILK
-2.2	+0.1	+4.0	+5.3	+34	+58	+91	+71	+22

FERTILITY EBVs	
SS	DTC
+2.7	-3.8

CARCASS EBVs					
CW	EMA	RIB	RUMP	RBY	IMF
+56	+2.7	+1.4	+1.6	-0.2	+1.3

Traits Observed: GL CE BWT 200WT(x2) 400WT(x2) 600WT SS FAT EMA IMF Genomics

Another growth bull, Top 10% for 600 day weight, but maintains good fats and IMF (Top 15%). Dams' pedigree contains multiple Benchmark animals. Homozygous Polled.



Purchaser: Price: \$

LOT 63

KOANUI INDEX Q344 (COM)

BORN 04/08/19 HB No. 0216190344P

CRAIGMORE IDOL 170325 (P)

- { CRAIGMORE IKE 140260 (P)
- { CRAIGMORE LEONORA 140118 (P)

- { KAIRURU IKE 110006 (P)
- { CRAIGMORE CYNTHIA 11033 (P)
- { CRAIGMORE IDEA 10263 (P)
- { CRAIGMORE LEONORA 05016 (P)

KOANUI 100554 (COM) (P)

- { WYBORN MANSION 0814 (P)
- { KOANUI 077089 (COM) (P)

- { TE TAUMATA SUPERSTAR (P)
- { WYBORN PEACH 2 04 03 (P)
- { KOANUI ARROW 5348 (P)
- { KOANUI 055002 (COM) (P)

\$ INDEX VALUES	
Hereford Prime	+\$51
Beef Heifer	-\$30
Dairy Beef	+\$73

CALVING EASE EBVs				GROWTH & MILK EBVs				
CE DIR	CE DTRS	GEST	BWT	200	400	600	MAT	MILK
-5.8	-4.8	+3.6	+4.1	+37	+60	+78	+78	+16

FERTILITY EBVs	
SS	DTC
+1.4	-0.1

CARCASS EBVs					
CW	EMA	RIB	RUMP	RBY	IMF
+52	+1.8	+0.6	+0.6	+0.1	+0.0

Traits Observed: GL CE BWT 200WT(x2) 400WT(x2) 600WT SS FAT EMA IMF Genomics

A commercial bull not for Stud Transfer. A strong bull with plenty of bone and power. Not suitable for heifers. Homozygous Polled.



Purchaser:..... Price: \$.....

LOT 64

KOANUI LEADER Q507

BORN 12/08/19 HB No. 0216190507P

KOANUI LEADER 7272 (P)

- R LEADER 6964 (IMP USA) (P)
- KOANUI CYNTHIA 0577 (P)

- HYALITE ON TARGET 936 (P)
- R MISS REVOLUTION 1009 (P)
- KOANUI SPY 8371 (P)
- KOANUI CYNTHIA 8155 (P)

KOANUI ROSE 7288 (P)

- KOANUI EXCITEMENT 5024 (P)
- KOANUI ROSE 5400 (P)

- OKAWA MARSHALL 1103 (P)
- KOANUI MINERVA 9079 (P)
- KOANUI DISPLAY 2450 (P)
- KOANUI ROSE 8279 (P)

\$ INDEX VALUES	
Hereford Prime	+\$127
Beef Heifer	+\$137
Dairy Beef	+\$112

CALVING EASE EBVs				GROWTH & MILK EBVs				
CE DIR	CE DTRS	GEST	BWT	200	400	600	MAT	MILK
+6.3	+1.3	+0.8	+2.5	+34	+56	+75	+49	+20

FERTILITY EBVs	
SS	DTC
+3.2	-4.6

CARCASE EBVs					
CW	EMA	RIB	RUMP	RBY	IMF
+55	+4.0	+1.0	+1.2	+0.9	+0.1

Traits Observed: CE BWT 200WT(x2) 400WT 600WT Genomics

A compact, well put together bull that provides an easier calving option.



Purchaser:..... Price: \$.....

bidr[®] is here.

Trade Livestock Like Never Before

Buy and Sell livestock on bidr[®] in **3 easy steps:**

1

Sign up at www.bidr.co.nz
and add your agency account
under account details

2

Browse auctions
to find livestock you are
interested in buying

3

Login and register for the
real time online auction to
bid for the livestock you
wish to purchase



Real time auctions, bid on livestock from
anywhere.



All livestock listed by livestock agents and
assessed by accredited assessors.



Nationwide Reach. Bringing more buyers
and sellers together, Virtually.



Buy livestock straight from farm resulting in
less stress on animals and positive
environmental benefits.



Full livestock assessment information for buyers
and nationwide reach for sellers.

bidr[®]

Contact your bidr[®]
Representative to sign up
at bidr.co.nz

0800 TO BIDR



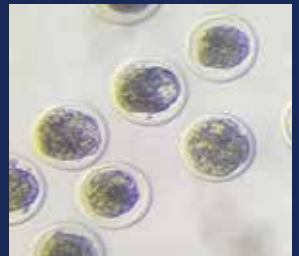
fb.com/bidrnz
instagram.com/bidrnz



TARARUA BREEDING CENTRE

WE COVER ALL ASPECTS OF REPRODUCTION

On Centre and on farm semen collection
Bull fertility evaluations and fresh collections for AI
AI and ET services
Import/Export of semen/embryos
Pre-export isolation



CONTACT US:

06 376 4955

office@tararuabreedingcentre.co.nz

www.tararuabreedingcentre.co.nz

Cattle, sheep and goat reproductive specialists



Tararua Breeding Centre
Part of Totally Vets Ltd



TARARUA BREEDING CENTRE

80541 Masterton Rd, RD 3
Woodville 4999
New Zealand

Ph. +64 6 376 4955

Fax. +64 6 376 4956

Email. office@tararua breedingcentre.co.nz

Web. tararua breedingcentre.co.nz

BBSE - Bull Breeding Soundness Evaluation March 2021

The Gold standard for this test is to collect the bull by an Artificial Vagina and have the semen assessed by a registered morphologist. All bulls that are tested by Tararua Breeding Centre are tested using this Gold Standard.

LIBIDO	Bulls must demonstrate the ability to mount an "in season" heifer or cow.
PENILE SOUNDNESS	Each bull's extended penis is examined during mounting for structural soundness, injuries and abnormalities, including deviations, persistent frenulum's, adhesions, genital warts and injuries that may have occurred while out mating.
SEMEN EVALUATION	Each bull's ejaculate, which is collected in an artificial vagina, is examined microscopically by a registered Morphologist for Density, Motility, Morphology and must pass the minimum standards of 70% normal at the time of testing.

Signed:

Guy Haynes

Bovine Reproduction Consultant

ARTIFICIAL BREEDING SPECIALISTS

Tararua Breeding Centre is a wholly owned subsidiary of Totally Vets Ltd.

NOTES

KOANUI POLLED HEREFORDS Ltd.

Purchaser's Instruction Slip

To be completed by the purchaser at the end of the sale for the vendor's records.

Please complete this slip then photograph or scan and email to info@koanuiherefords.co.nz

NAME: _____

NAIT NUMBER: _____

ADDRESS: _____

TELEPHONE: _____ FAX: _____

MOBILE: _____

EMAIL: _____

DELIVERY CONTACT Phone No.: _____

DELIVERY CONTACT NAME: _____

DELIVERY ADDRESS: _____

PURCHASES: Lot No. _____ Price: _____

PURCHASES: Lot No. _____ Price: _____

PURCHASES: Lot No. _____ Price: _____

PURCHASES: Lot No. _____ Price: _____

Please tick this box if you consent to your information being shared between

[insurer name.....], [vendor or organising body.....]
and/or the relevant livestock agency, for the purpose of offering you insurance.

TRANSPORT INSTRUCTIONS (Be Definite)



I UNDERSTAND THAT I MUST UNDERTAKE TO INSURE MY BULL/S AT THE END OF THE AUCTION. PLEASE CONTACT YOUR OWN INSURANCE COMPANY.

ADDRESS: _____

STUD HERD No. IF TRANSFER REQUIRED: _____

SIGNATURE OF PURCHASER OR AGENT: _____

Date June 17 2021

Catalogue Index - Lot Order

LOT	TAG	HERDBOOK NUMBER
LOT 1	Q494	0216190494
LOT 2	Q627	0216190627
LOT 3	Q570	0216190570
LOT 4	Q213	0216190213
LOT 5	Q226	0216190226
LOT 6	Q517	0216190517
LOT 7	Q361	0216190361
LOT 8	Q371	0216190371
LOT 9	Q247	0216190247
LOT 10	Q555	0216190555
LOT 11	Q462	0216190462
LOT 12	Q464	0216190464
LOT 13	Q445	0216190445
LOT 14	Q498	0216190498
LOT 15	Q354	0216190354
LOT 16	Q324	0216190324
LOT 17	Q098	0216190098
LOT 18	Q526	0216190526
LOT 19	Q473	0216190473
LOT 20	Q412	0216190412
LOT 21	Q505	0216190505
LOT 22	Q519	0216190519
LOT 23	Q603	0216190603
LOT 24	Q552	0216190552
LOT 25	Q227	0216190227
LOT 26	Q173	0216190173
LOT 27	Q313	0216190313
LOT 28	Q628	0216190628
LOT 29	Q458	0216190458
LOT 30	Q538	0216190538
LOT 31	Q632	0216190632
LOT 32	Q583	0216190583

LOT	TAG	HERDBOOK NUMBER
LOT 33	Q231	0216190231
LOT 34	Q181	0216190181
LOT 35	Q467	0216190467
LOT 36	Q535	0216190535
LOT 37	Q080	0216190080
LOT 38	Q079	0216190079
LOT 39	Q107	0216190107
LOT 40	Q131	0216190131
LOT 41	Q225	0216190225
LOT 42	Q159	0216190159
LOT 43	Q198	0216190198
LOT 44	Q132	0216190132
LOT 45	Q049	0216190049
LOT 46	Q588	0216190588
LOT 47	Q235	0216190235
LOT 48	Q425	0216190425
LOT 49	Q426	0216190426
LOT 50	Q511	0216190511
LOT 51	Q122	0216190122
LOT 52	Q353	0216190353
LOT 53	Q685	0216190685
LOT 54	Q109	0216190109
LOT 55	Q581	0216190581
LOT 56	Q385	0216190385
LOT 57	Q431	0216190431
LOT 58	Q434	0216190434
LOT 59	Q223	0216190223
LOT 60	Q395	0216190395
LOT 61	Q283	0216190283
LOT 62	Q531	0216190531
LOT 63	Q344	0216190344
LOT 64	Q507	0216190507

Catalogue Index - Tag Order

LOT	TAG	HERDBOOK NUMBER	LOT	TAG	HERDBOOK NUMBER
LOT 45	Q049	0216190049	LOT 48	Q425	0216190425
LOT 38	Q079	0216190079	LOT 49	Q426	0216190426
LOT 37	Q080	0216190080	LOT 57	Q431	0216190431
LOT 17	Q098	0216190098	LOT 58	Q434	0216190434
LOT 39	Q107	0216190107	LOT 13	Q445	0216190445
LOT 54	Q109	0216190109	LOT 29	Q458	0216190458
LOT 51	Q122	0216190122	LOT 11	Q462	0216190462
LOT 40	Q131	0216190131	LOT 12	Q464	0216190464
LOT 44	Q132	0216190132	LOT 35	Q467	0216190467
LOT 42	Q159	0216190159	LOT 19	Q473	0216190473
LOT 26	Q173	0216190173	LOT 01	Q494	0216190494
LOT 34	Q181	0216190181	LOT 14	Q498	0216190498
LOT 43	Q198	0216190198	LOT 21	Q505	0216190505
LOT 04	Q213	0216190213	LOT 64	Q507	0216190507
LOT 59	Q223	0216190223	LOT 50	Q511	0216190511
LOT 41	Q225	0216190225	LOT 06	Q517	0216190517
LOT 05	Q226	0216190226	LOT 22	Q519	0216190519
LOT 25	Q227	0216190227	LOT 18	Q526	0216190526
LOT 33	Q231	0216190231	LOT 62	Q531	0216190531
LOT 47	Q235	0216190235	LOT 36	Q535	0216190535
LOT 09	Q247	0216190247	LOT 30	Q538	0216190538
LOT 61	Q283	0216190283	LOT 24	Q552	0216190552
LOT 27	Q313	0216190313	LOT 10	Q555	0216190555
LOT 16	Q324	0216190324	LOT 03	Q570	0216190570
LOT 63	Q344	0216190344	LOT 55	Q581	0216190581
LOT 52	Q353	0216190353	LOT 32	Q583	0216190583
LOT 15	Q354	0216190354	LOT 46	Q588	0216190588
LOT 07	Q361	0216190361	LOT 23	Q603	0216190603
LOT 08	Q371	0216190371	LOT 02	Q627	0216190627
LOT 56	Q385	0216190385	LOT 28	Q628	0216190628
LOT 60	Q395	0216190395	LOT 31	Q632	0216190632
LOT 20	Q412	0216190412	LOT 53	Q685	0216190685

For further information or to visit please contact:

Fred, Chris, Jennifer Chesterman & Family
443 Maraetotara Rd, Havelock North, 4294

Ph: 06 874 7844 **Mobile:** 027 4888 635 OR 027 4777 637

Email: info@koanuiherefords.co.nz

www.koanuiherefords.co.nz

We are proud of our cow herd

KPH | **KOANUI**
POLLED HEREFORDS