

2024

# KOANUI

## POLLED HEREFORDS

---

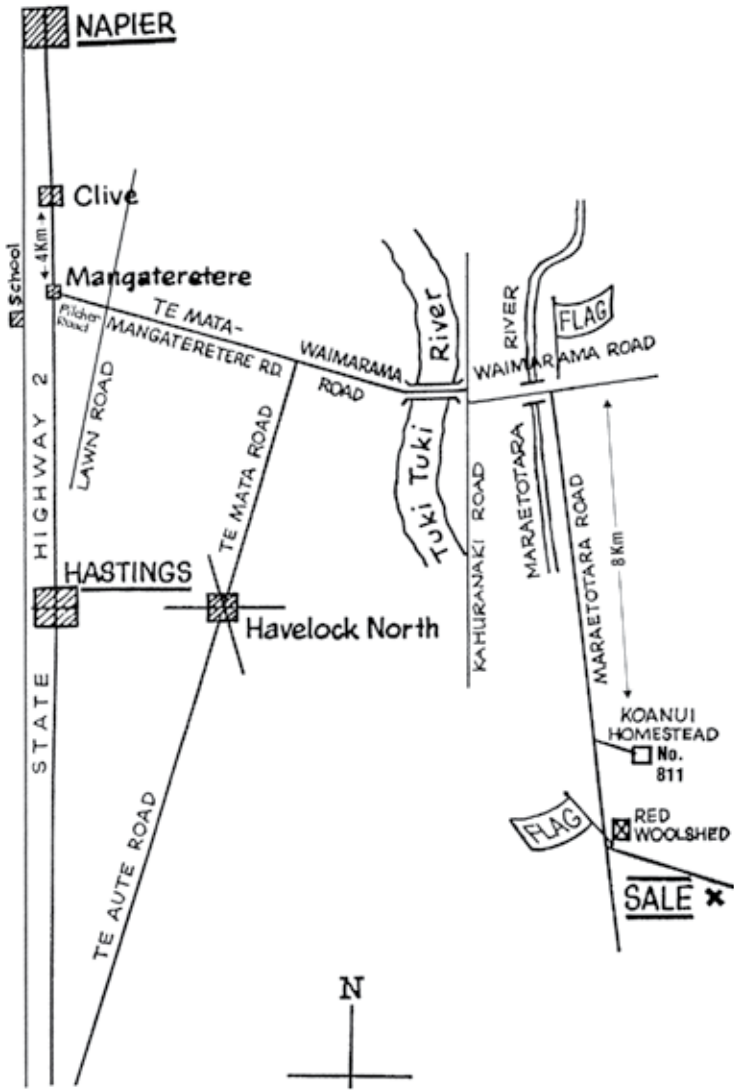
**ON-FARM BULL SALE**  
**1pm, Thursday 13 June**

---

At 'The Sale Shed'  
839 Maraetotara Rd  
Havelock North

[www.koanuiherefords.co.nz](http://www.koanuiherefords.co.nz)





# OPEN DAY

10am - 2pm

Thursday 23 May

*Preview the bulls and see them in action!*



*Mother of Koanui Lips T147  
pictured with 2023 calf*

# KPH | KOANUI POLLED HEREFORDS

*Building on 50 years!*

## ON FARM AUCTION with bidr<sup>®</sup> 1 pm Thursday 13 June

The 2024 Sale is being held on-farm and online by bidr hybrid auction. If possible, we encourage you to view the animals prior to sale. Spark reception and internet will be available on sale day. Contact Koanui or your livestock agent for further information.

- More than 650 stud cows
- Rigorous selection
- Performance recorded
- Bulls semen & service tested
- BVD vaccinated
- TB status C10
- *Satisfaction guaranteed!*

*Inspection always welcomed!*

### OPEN DAY

10:00am - 2:00pm

Thursday 23 May

*Or view by prior arrangement*

### Koanui contacts:

Home phone 06 874 7844

Chris Chesterman 027 488 8635

Jennifer Chesterman 027 477 7637

[info@koanuiherefords.co.nz](mailto:info@koanuiherefords.co.nz)

*Follow us on Facebook for updates*

[www.facebook.com/KoanuiPH/](https://www.facebook.com/KoanuiPH/)

[www.koanuiherefords.co.nz](http://www.koanuiherefords.co.nz)

### Agent contacts:

#### **PGG Wrightson**

Cam Heggie 027 501 8182

Tom Suttor 027 446 9967

Simon Smith 027 444 0733

Sam Wright 027 247 9035

#### **Carrfields Ltd.**

Matt Harvey 027 318 6746

#### **WR Dyer Livestock**

Ross Dyer 027 433 3381

#### **Redshaw Livestock Ltd.**

Dean Freeman 027 445 1944

Scott Heasley 021 0827 3867

This sale will be hosted by bidr® (bidr.co.nz) as a HYBRID ON-FARM auction, with online bidding and a live-stream available for online purchasers.

All intending online purchasers must register with bidr® using an account held with one of the bidr® partner agencies in advance of the sale date.

The bidr® team is available to assist intending purchasers with signing up and registering – please call 0800 TO BIDR (0800 86 2437), or email enquiries@bidr.co.nz for assistance at any point.

**Alternatively, contact your local bidr® representative:**

**Caitlin Barnett**

Sales and Operations Manager  
027 405 6156

**Bruno Santos**

Upper North Island Territory Manager  
027 221 8276

**Aimee Flynn**

Lower North Island Territory Manager  
027 282 1710

**Mckenzie Alfeld**

Upper South Island Territory Manager  
027 341 8066

**Bianca Perkins**

Upper South Island Territory Manager  
027 732 0006

**Sam Murphy**

Lower South Island Territory Manager  
027 243 2736

**Olivia Manley**

Sales Coordinator  
027 348 6354

# The Koanui Sale 2024

**Dear friends and fellow cattle breeders,**

Writing our annual catalogue foreword, more than a year on from Cyclone Gabrielle, has led us to reflect on the past 12 months – which have been trying to say the least.

The reality is that we are all experiencing a lot of stress and uncertainty in our beloved agricultural industry. If only we could relax and enjoy farming without worry!

We are now enjoying getting back to assessing and promoting our stud stock. Good stock that performs and are easy to handle are very satisfying to farm and we know our stock will continue to generate profitable returns for our clients.

This year we ask you to consider the strength of the female families that are behind the Koanui sale bulls. We highly value our cow herd and take great satisfaction from seeing the herd's productivity, structural soundness, fertility, and performance.

Over recent years much of our selection focus in the cow herd has involved traits that have not been measurable by Breedplan including phenotype, docility, and conformation. This, together with unabated selection for structural soundness, udder shape and size, and female fertility, is the foundation of strength in our cow herd.

We often wonder whether some of these female fundamentals are missed in herds where the race for Breedplan data numbers is on, and herds are selecting more primarily on data sets alone. High performance figures look impressive but may not suit the environmental and nutritional resources that your farming system has to offer.

Get the right bull for your system. We believe in getting the basics right to move forward with profitable productivity.

If you need a hand working out which bull has the right strengths for your herd's breeding objectives, please reach out anytime by phone. We are only too happy to help you with selection for your own herd's breeding goals. Give us a call or better yet, come and visit one of our open days or by appointment, and we can show you the bulls and discuss them with you in detail.

We hope you will come and enjoy a day out at our Koanui bull sale on Thursday June 13. The sale starts at 1:00pm but you're invited to come early or stay later to catch up with others and enjoy our hospitality.

This year's sale is an opportunity to purchase from our most refined selection of rising two-year-old bulls. There will be some great and inexpensive purchase opportunities this year that are, as always, backed by our satisfaction guarantee. We always stand behind our bulls and our farming friends.

**Yours in cattle breeding,  
*Chris and Jennifer Chesterman***



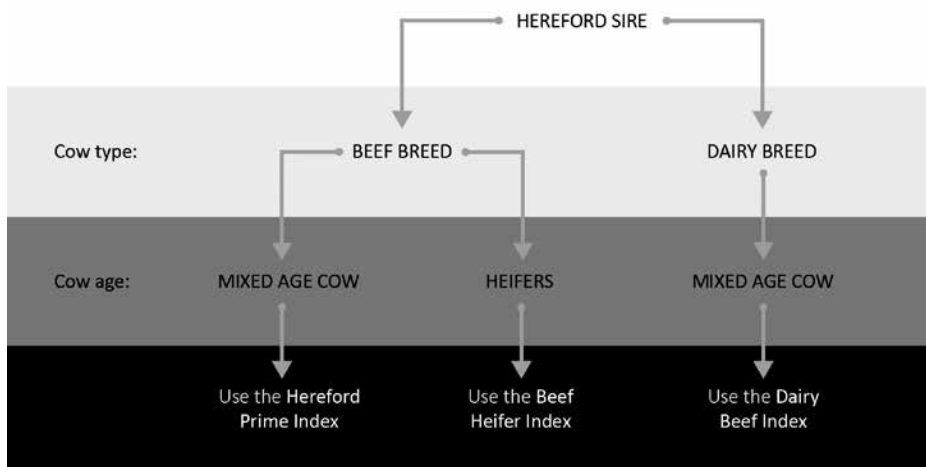
## HEREFORD NZ EBV's Explained

BREEDPLAN EBVs and selection indexes remove the effects of non-genetic factors (e.g. feeding regimes, animal age) from what is seen and measured to provide the best measure of an animal's genetic merit. BREEDPLAN information should always be used in conjunction with other selection criteria, including visual assessment.

### A BEST PRACTICE GUIDE TO SELECTING YOUR NEXT NEW ZEALAND HEREFORD SIRE

A BREEDPLAN Guide to Animal Selection allows you to select the best genetics for your herd in four easy steps:

#### Which New Zealand Hereford Selection Index should you use?



1. Identify the New Zealand Hereford selection index of most relevance to you.
2. Rank animals using the chosen selection index.
3. Consider the individual EBVs of importance.
4. Consider other traits of importance (e.g. visual assessment).

The majority of these steps can be undertaken online, allowing you to generate a shortlist of bulls for potential purchase ahead of sale day. The searchable version of this catalogue can be found online at the Hereford NZ website: [www.herefords.co.nz](http://www.herefords.co.nz) or at Pivot Design: [www.pivotdesign.co.nz/catalogues](http://www.pivotdesign.co.nz/catalogues)

### NEW ZEALAND HEREFORD BREEDPLAN

A BREEDPLAN Guide to Interpreting EBVs outlines how to assess and compare the genetic merit of animals. Please note that only EBVs from the same BREEDPLAN analysis can be directly compared. New Zealand Herefords publishes the following BREEDPLAN EBVs:

**Calving Ease Direct (%):** Higher (or more positive) CEDir EBVs indicate that two year old heifers will have less difficulty when calving this sire's progeny.

**Calving Ease Daughters (%):** Higher (or more positive) CEDtr EBVs indicate easier calving of this sire's daughters at two years of age.

**Gestation Length (days):** Bulls with lower (or more negative) GL EBVs are expected to produce progeny with shorter gestation lengths. Such progeny are also expected to be easier calving.

**Birth Weight (kg):** Bulls with lower, less positive BWt EBVs are expected to produce progeny that are lighter at birth, with an associated lower risk of calving difficulty. This EBV is particularly important when selecting sires where there is an increased risk of calving difficulty (e.g. heifers, cross-breeding).

**200, 400 & 600 Day Weight EBVs (kg):** Bulls with larger (or more positive) Weight EBVs are expected to produce progeny that grow faster to 200, 400 & 600 days of age, respectively. The Weight EBV of particular importance will depend on the target market e.g. vealer (200 D), yearling (400 D) or heavy steer (600 D).

**Mature Cow Weight (kg):** Bulls with larger (or more positive) MCW EBVs are expected to produce daughters with higher mature cow weights and increased feed requirements. More moderate MCW EBVs are generally more favourable in self replacing or maternal production systems.

**Milk (kg):** Bulls with higher (or more positive) Milk EBVs are expected to produce daughters with more maternal ability leading to higher 200 day weights in their progeny. Selection for moderate Milk EBVs may be preferable in harsher environments as cows with higher Milk EBVs can have impaired fertility and decreased survival under such conditions.

**Maternal Value (kg):** Bulls with larger (or more positive) Maternal Value EBVs are expected to produce daughters whose progeny will grow faster to 200 days of age.

**Scrotal Size (cm):** Bulls with larger (or more positive) SS EBVs indicate better semen quality and quantity. Daughters are expected to be more fertile and reach puberty at an earlier age.

**Days to Calving (days):** Bulls with lower (or more negative) DTC EBVs are expected to produce daughters that are more fertile and have a shorter interval from bull-in date to calving.

**Carcase Weight (kg):** Bulls with larger (or more positive) CWt EBVs are expected to produce progeny with heavier carcass weights.

**Eye Muscle Area (sq. cm):** Bulls with a higher (or more positive) EMA EBV are expected to produce progeny with better muscling.

**Rib and Rump Fat EBVs (mm):** Bulls with higher (or more positive) Rib & Rump Fat EBVs are expected to produce fatter progeny, relative to carcass weight. The desire for more or less fat will depend on the finishing ability of your animals.

**Retail Beef Yield (%):** Bulls with higher (or more positive) RBV EBVs are expected to produce progeny with higher yielding carcasses.

**Intramuscular Fat (%):** Bulls with higher (or more positive) IMF EBVs are expected to produce progeny with more marbling and better grading scores (e.g. MSA).

**Docility (%):** Bulls with higher (or more positive) DOC EBVs are expected to produce more progeny with acceptable temperament.



For more information on using and understanding BREEDPLAN information, including the BREEDPLAN Guides, scan the QR code.  
<https://breedplan.une.edu.au/media/dtqpdm34/using-and-understanding-breedplan-ebvs.pdf>

## SELECTION INDEXES

New Zealand Herefords currently reports three different selection indexes. These are the: **Hereford Prime Index, Beef Heifer Index, & the Dairy Beef Index**



Each selection index is reported in units of net profitability per cow mated (\$), and relates to a commercial herd using Hereford bulls. Each selection index is focused on efficient beef production, including maternal traits where appropriate. Scan the QR code for more details.  
<https://breedplan.une.edu.au/media/f1bh1b4n/using-new-zealand-hereford-selection-indexes.pdf>





# HEREFORD BREEDPLAN - PERCENTILE BANDS FOR ALL 2022 BORN ANIMALS

	Calv-Ease			Birth			Growth			Fert			Carcase					Indexes			Extra				
	Dir	Dtrs	%	GL	Bwt	200	400	600	Mwt	Milk	SS	DC	Cwt	EMA	Rib	P8	RBY	IMF	HP	BH	DB	Doc			
	days			kg			cm			days			kg			sq.cm			mm			%			\$
High 1%	+13.1	+10.4	-7.6	-2.1	+47	+82	+116	+107	+30	+4.3	-7.2	+79	+6.7	+2.9	+4.1	+2.1	+2.2	+183	+256	+145	+49				
High 5%	+11.5	+8.4	-4.2	-0.7	+43	+73	+103	+92	+26	+3.5	-6.2	+71	+5.7	+2.4	+3.2	+1.6	+1.7	+164	+222	+135	+44				
High 10%	+10.4	+7.3	-2.9	+0.1	+40	+69	+97	+85	+24	+3.2	-5.6	+66	+5.1	+2.1	+2.8	+1.4	+1.4	+153	+204	+130	+41				
High 15%	+9.5	+6.6	-2.4	+0.6	+39	+66	+93	+80	+23	+3.0	-5.3	+64	+4.8	+1.9	+2.5	+1.2	+1.3	+147	+192	+127	+38				
High 20%	+8.8	+6.1	-2.0	+1.0	+37	+64	+89	+76	+22	+2.8	-5.0	+61	+4.6	+1.8	+2.3	+1.0	+1.1	+141	+182	+124	+36				
High 25%	+8.1	+5.7	-1.6	+1.4	+36	+62	+86	+73	+22	+2.7	-4.8	+60	+4.3	+1.6	+2.1	+0.9	+1.0	+137	+173	+122	+35				
High 30%	+7.4	+5.2	-1.3	+1.7	+35	+60	+84	+70	+21	+2.5	-4.6	+58	+4.1	+1.5	+1.9	+0.8	+1.0	+133	+165	+120	+34				
High 35%	+6.9	+4.8	-1.1	+2.0	+34	+59	+81	+67	+20	+2.4	-4.5	+56	+4.0	+1.4	+1.8	+0.7	+0.9	+129	+157	+118	+32				
High 40%	+6.3	+4.4	-0.8	+2.3	+33	+57	+79	+64	+20	+2.3	-4.3	+55	+3.8	+1.3	+1.7	+0.6	+0.8	+126	+151	+116	+31				
High 45%	+5.7	+4.1	-0.6	+2.5	+32	+56	+77	+62	+19	+2.2	-4.1	+53	+3.6	+1.3	+1.5	+0.6	+0.7	+123	+144	+114	+30				
50%	+5.1	+3.7	-0.4	+2.8	+31	+54	+75	+60	+19	+2.1	-4.0	+52	+3.5	+1.2	+1.4	+0.5	+0.6	+119	+138	+113	+29				
Low 45%	+4.6	+3.3	-0.2	+3.1	+31	+53	+73	+57	+18	+2.0	-3.8	+51	+3.3	+1.1	+1.3	+0.4	+0.6	+116	+131	+111	+27				
Low 40%	+4.0	+3.0	+0.0	+3.4	+30	+52	+71	+55	+18	+1.9	-3.7	+49	+3.2	+1.0	+1.2	+0.3	+0.5	+113	+124	+109	+26				
Low 35%	+3.3	+2.6	+0.2	+3.6	+29	+50	+69	+52	+17	+1.8	-3.5	+48	+3.1	+1.0	+1.1	+0.2	+0.4	+110	+117	+107	+25				
Low 30%	+2.7	+2.2	+0.4	+3.9	+28	+49	+67	+49	+16	+1.7	-3.3	+46	+2.9	+0.9	+0.9	+0.2	+0.4	+106	+109	+105	+23				
Low 25%	+2.0	+1.7	+0.6	+4.2	+27	+47	+64	+47	+16	+1.6	-3.1	+45	+2.8	+0.8	+0.8	+0.1	+0.3	+102	+101	+102	+21				
Low 20%	+1.1	+1.3	+0.8	+4.6	+26	+45	+62	+44	+15	+1.5	-2.9	+43	+2.6	+0.7	+0.6	+0.0	+0.2	+98	+91	+99	+19				
Low 15%	+0.2	+0.7	+1.1	+4.9	+25	+43	+59	+40	+14	+1.3	-2.7	+41	+2.4	+0.5	+0.4	-0.2	+0.1	+93	+78	+96	+17				
Low 10%	-1.1	+0.0	+1.5	+5.4	+23	+41	+55	+35	+13	+1.1	-2.3	+38	+2.2	+0.4	+0.2	-0.3	+0.0	+87	+63	+91	+14				
Low 5%	-3.2	-1.2	+2.1	+6.1	+21	+37	+49	+28	+11	+0.8	-1.9	+34	+1.9	+0.2	-0.2	-0.6	-0.2	+79	+38	+84	+8				
Low 1%	-7.9	-3.6	+3.5	+7.5	+16	+30	+39	+15	+8	+0.2	-0.8	+26	+1.2	-0.3	-0.9	-1.1	-0.6	+62	-9	+68	-3				



## NZ HEREFORDS Breed Average for 2022 Born Calves

CALVING EASE EBVs				GROWTH & MILK EBVs					FERTILITY	
CE DIR	CE DTRS	GEST	BWT	200	400	600	MAT	MILK	SS	DTC
+4.8	+3.7	-0.7	+2.8	31	+54	+76	+60	+19	+2.1	-4.0

CARCASE EBVs						\$ INDEX VALUES		
CW	EMA	RIB	RUMP	RBY	IMF	HPrime	Beef Heifer	Dairy Beef
+52	+3.6	+1.2	+1.5	+0.5	+0.7	+120	+135	+111

*The BREEDPLAN Estimated Breeding Values (EBVs) contained within this sale catalogue were compiled by the Agricultural Business Research Institute (ABRI) from the data supplied by breeders. Neither NZ Herefords nor ABRI oversee or audit the collection of this data.*

## Some facts on Gene Testing for Polled Cattle

In the Koanui Sale 2024 offering all bulls are Homozygous Polled unless the notes say Heterozygous Polled.

The test for Polledness is used to identify animals that carry two copies of the Polled gene. These animals are called **Homozygous Polled** animals. As the polled gene is dominant over the horned gene, a homozygous polled animal will produce 100 percent of polled progeny when mated to horned animals.

A **Heterozygous Polled** animal has only one copy of the dominant polled gene. He will present as Polled but the resultant progeny may have horn or scur if the mother has horn or scur.

## Understanding our terminology...

**While proofing the catalogue our son Gerard asked ChatGPT to help him to understand the animal descriptions. It was surprisingly helpful so we have included his question and the answer he was given below....**

### His Question...

“What does someone mean when talking about a bull and saying ‘the spring of rib with depth and real substance?’”

### ChatGPT:

When someone refers to “the spring of rib with depth and real substance” in the context of a bull, they are likely talking about the physical characteristics of the animal. “Spring of rib” typically refers to the curvature or roundness of the ribcage, indicating a well-rounded and muscular body. “Depth” suggests that the ribcage is not shallow but extends deeply into the body, indicating good capacity for muscle and organ development. “Real Substance” implies that the bull has a solid and substantial build, likely indicating a well-muscled frame and overall robustness. In agriculture or livestock contexts, these traits are often desirable as they can indicate good health, strength, and potential for producing offspring with similar qualities.

*But you probably already knew that...*



**REFERENCE SIRE**

**KOANUI MAJOR P469**

Born 13/08/18 HB No. 0216180469P

**MAHUTA MAJOR 6018 (P)**

- LIMEHILLS STARTER 131078 (BM) (P)
- MAHUTA AMETHYST 4036 (P)

- LIMEHILLS STAMPER 110429 (BM) (P)
- LIMEHILLS 110562 (P)
- KOANUI SPY 8371 (P)
- MAHUTA AMETHYST 8001 (P)

**KOANUI SPIRIT QUEEN 6219 (P)**

- KOANUI BUSTLER 2541 (P)
- KOANUI SPIRIT QUEEN 2308 (P)

- KOANUI BUSTLER 8132 (P)
- KOANUI CYNTHIA 5508 (BM) (P)
- KOANUI SPECTRE 8365 (P)
- KOANUI SPIRIT QUEEN 9152 (P)

\$ INDEX VALUES	
Hereford Prime	+\$204
Beef Heifer	+\$220
Dairy Beef	+\$131

APRIL 2024 HEREFORD BREEDPLAN									
CALVING EASE EBVs				GROWTH & MILK EBVs					
CE DIR	CE DTRS	GEST	BWT	200	400	600	MAT	MILK	
+8.1	+5.2	+0.2	-0.5	+32	+62	+82	+40	+5	

FERTILITY EBVs	
SS	DTC
+3.6	-4.7

CARCASE EBVs					
CW	EMA	RIB	RUMP	RBV	IMF
+62	+1.8	+1.9	+2.4	-0.5	+1.2

**Traits Observed:** CE BWT 200WT 400WT(x2) 600WT SS FAT EMA IMF Genomics  
 Koanui Major P469 has been an excellent heifer mating sire with good Calving Ease and Intramuscular Fat % EBVs. He has the ideal phenotype with length, smooth shoulders and good neck extension. We have retained a very good Major son this year in Koanui Magic T013 and there are numerous standout sons of Major in this year's sale. Major P469 is a Sire Trait Leader for low Birth Weight and high Scrotal Size EBVs. He is in the top 1% of the breed for Hereford Prime \$ Index and top 10% for both Beef Heifer and Dairy Beef Indexes. That about says it all!



**REFERENCE SIRE**

**YALGOO PIONEER P007 (IMP)**

Born 20/08/18 HB No. AUSODP007P

**GLENTREVOR WALLACE H427 (P)**

- SOUTH BUKALONG WALLACE 2 (P)
- GLENTREVOR MARITANA F240 (P)

- SOUTH BUKALONG WALKER 6 (P)
- SOUTH BUKALONG VICTORIA 152 (P)
- GLENTREVOR ROCKET D016 (P)
- GLENTREVOR MARITANA C925 (P)

**YALGOO BUFFY M117 (P)**

- NJW 73S M326 TRUST 100W (IMP USA) (BM) (ET) (P)
- YALGOO BUFFY D191 (P)

- KCF BENNETT 3008 M326 (P)
- NJW P606 72N DAYDREAM 73S (P)
- YALGOO FRONTEIR A092 (P)
- YALGOO BUFFY R185 (P)

\$ INDEX VALUES	
Hereford Prime	+\$113
Beef Heifer	+\$137
Dairy Beef	+\$112

APRIL 2024 HEREFORD BREEDPLAN									
CALVING EASE EBVs				GROWTH & MILK EBVs					
CE DIR	CE DTRS	GEST	BWT	200	400	600	MAT	MILK	
+3.3	+7.8	+2.8	+3.6	+36	+64	+87	+57	+25	

FERTILITY EBVs	
SS	DTC
+1.4	+0.0

CARCASE EBVs					
CW	EMA	RIB	RUMP	RBV	IMF
+59	+4.6	+0.4	+0.6	+1.5	+0.4

**Traits Observed:** GL CE BWT 200WT 400WT 600WT SS FAT EMA IMF Genomics  
 Koanui imported semen from Australia in Yalgoo Pioneer P007. Arriving late in 2020, Pioneer had only two heifer calves in 2021. The Pioneer sons catalogued here represent the first on the market. We think that Pioneer is the sort of bull that is most valuable to the herd through his daughters. Calving Ease is in the acceptable range and the phenotype is for feminine and functional daughters with very nice udders and plenty of milk. Pioneer is in the top 10% of the breed for IMF % EBV and top 20% for EMA EBV. We have some top Pioneer sons for next year.



## REFERENCE SIRE

## MATARIKI MEMPHIS

Born 16/09/19

HB No. 0281190231P

MATARIKI JUGGLER (P)

{ KOANUI CHIEFLY 2510 (P)  
MATARIKI GIRLIE 080828 (P)

{ KOANUI CHIEFLY 9068 (P)  
KOANUI HEATHER 6524 (P)  
CAPETHORNE HOT SHOT 03 22 (P)  
MATARIKI GIRLIE 04930 (P)

MATARIKI JANE 090051 (P)

{ KAIRURU DAVIES 060017 (P)  
MATARIKI JANE 050038 (P)

{ HARVIE LADIES MAN 4L (IMP CAN) (P)  
KAIRURU LYDIA 03 0030 (P)  
KOANUI SAFETY U130 (BM) (P)  
MATARIKI JANE S183 (P)

\$ INDEX VALUES	
Hereford Prime	+\$106
Beef Heifer	+\$85
Dairy Beef	+\$92

APRIL 2024 HEREFORD BREEDPLAN									
CALVING EASE EBVs				GROWTH & MILK EBVs					
CE DIR	CE DTRS	GEST	BWT	200	400	600	MAT	MILK	
+0.3	+0.2	-2.0	+4.8	+41	+61	+84	+79	+19	

FERTILITY EBVs	
SS	DTC
+4.1	-5.6

CARCASS EBVs					
CW	EMA	RIB	RUMP	RYB	IMF
+50	+1.8	+0.6	+0.8	+0.8	-0.6

**Traits Observed:** CE BWT 200WT 400WT 600WT SS FAT EMA IMF Genomics

Purchased from Matariki in 2021, Memphis has been a power house for rib and body on very sound feet and legs. He is a Sire Trait Leader for Scrotal Size EBV and is in the top 10% of the breed for 200-Day Growth EBV and shorter Days to Calving. He goes back to our own bred Koanui Safety U130, a Benchmark sire on the dams side and the Koanui Chiefly line on the sire's side.





**REFERENCE SIRE**

**ROCK-END STARTER 9054**

Born 08/09/19 HB No. 1243199054S

**LIMEHILLS STARTER 160062 (P)**

- LIMEHILLS STAMPER 140064 (P)
- LIMEHILLS BEAUTY 140225 (P)

- LIMEHILLS STAMPER 110429 (BM) (P)
- LIMEHILLS LEONORA 749 (P)
- OKAWA ELECTRA 1117 (BM) (P)
- LIMEHILLS BEAUTY 110483 (SBM) (P)

**ROCK-END PEARL 15090 (SBM) (P)**

- ROCK-END UPPER 2053 (P)
- WANDO PEARL 1002 (P)

- KOANUI UPPER 9102 (P)
- ROCK-END PRINCESS 7067 (P)
- OTAPAWA SPARK 3060 (BM) (ET) (P)
- WANDO PEARL 03 10 (P)

\$ INDEX VALUES	
Hereford Prime	+\$164
Beef Heifer	+\$210
Dairy Beef	+\$131

APRIL 2024 HEREFORD BREEDPLAN									
CALVING EASE EBVs					GROWTH & MILK EBVs				
CE DIR	CE DTRS	GEST	BWT	200	400	600	MAT	MILK	
+3.6	+5.3	-2.3	+5.6	+49	+86	+128	+131	+17	

FERTILITY EBVs	
SS	DTC
+3.9	-5.2

CARCASS EBVs					
CW	EMA	RIB	RUMP	RBY	IMF
+87	+3.8	+1.4	+1.6	+0.1	+0.8

**Traits Observed:** GL CE BWT 200WT(x2) 400WT 600WT SS FAT EMA IMF Genomics  
 Known as Koanui as 'Sultan', Rock-End Starter 9054 is a scurred bull who was purchased from the McCormicks' in 2021. He is a Sire Trait Leader for 200, 400 and 600-Day Growth and Scrotal Size EBVs and he is in the top 10% of the breed for every \$ Index. His dam is a Silver Benchmark Dam who goes back to Koanui Upper 9102 on the top side. We are proud to present his first sons in this year's sale and his next calf crop are right at the top end. Sultan is an unique bull with an ideal phenotype, muscle in all the right places, length from hip to pin, a great back-end, high performance and a moderate frame. He is easy keeping and very quiet but carries himself very well with length of body and neck extension. Heterozygous Polled.

**LOT 1**

**KOANUI LIPS T147**

Born 25/07/22

HB No. 0216220147P

**KOANUI LAYER P028 (P)**

- KOANUI LAYER 6278 (P)
- KOANUI REGAL 6629 (P)

- R LEADER 6964 (IMP USA) (BM) (P)
- KOANUI CYNTHIA 6099 (P)
- KOANUI BARITONE 3600 (P)
- KOANUI REGAL 3111 (S)

**KOANUI AMETHYST Q100 (BM) (P)**

- KOANUI BROADWAY 7292 (P)
- KOANUI AMETHYST 7169 (P)

- BEECHWOOD BIG TIME (P)
- KOANUI LEONORA 4116 (P)
- KOANUI XCELERATOR 5088 (BM) (P)
- KOANUI AMETHYST 3343 (P)

\$ INDEX VALUES	
Hereford Prime	+\$172
Beef Heifer	+\$225
Dairy Beef	+\$134

APRIL 2024 HEREFORD BREEDPLAN									
CALVING EASE EBVs				GROWTH & MILK EBVs					
CE DIR	CE DTRS	GEST	BWT	200	400	600	MAT	MILK	
+7.5	+5.2	-1.3	+2.5	+39	+69	+98	+75	+23	

FERTILITY EBVs	
SS	DTC
+4.0	-6.4

CARCASS EBVs					
CW	EMA	RIB	RUMP	RBY	IMF
+71	+5.8	+2.4	+3.1	+0.8	+0.9

Traits Observed: CE BWT 200WT 400WT 600WT SS FAT EMA IMF DOC Genomics

*SEMEN PACKAGE. We are offering a 100 straw semen package in retained herd sire Koanui Lips T147. Semen is available for with-in herd use to a maximum of two stud herd prefixes. Pictured at 19 months of age, Lips T147 is one of the most exceptional bulls that Koanui has ever bred. The performance, phenotype and data set is both exceptional and exciting. His dam, Koanui Amethyst Q100, is a beautiful cow with the most perfect udder you will find on a beef cow. She has produced three exceptional calves with this year's heifer calf by Matariki Navigator. Q100 is a dream female. She is a Benchmark dam. His sire is Koanui Layer P028 who is breeding very well and is very sought after in Australia. Lips is in the top 5% of the breed for both Hereford Prime and Beef Heifer \$ Indexes and top 10% of the breed for Dairy Beef \$ Index.*



Purchaser:..... Price: \$.....

**LOT 2**

**KOANUI BRAVO T052**

Born 18/07/22 HB No. 0216220052P

**KOANUI BRAVO Q627 (P)**

- OTENGI BATON 484 (P)
- KOANUI BLUSH 6360 (P)

- OTENGI BATON 147 (P)
- OTENGI GOLD 206 (P)
- KOANUI CHEROKEE 3407 (P)
- KOANUI BLUSH 2074 (P)

**KOANUI AMETHYST P441 (P)**

- KOANUI XCELERATOR 5088 (BM) (P)
- KOANUI AMETHYST 5466 (P)

- TRIARA XCELERATOR 594X (IMP CAN) (P)
- KOANUI GLORY 0303 (P)
- KOANUI DISPLAY 2450 (P)
- KOANUI AMETHYST 1227 (P)

\$ INDEX VALUES	
Hereford Prime	+\$112
Beef Heifer	+\$127
Dairy Beef	+\$111

APRIL 2024 HEREFORD BREEDPLAN									
CALVING EASE EBVs				GROWTH & MILK EBVs					
CE DIR	CE DTRS	GEST	BWT	200	400	600	MAT	MILK	
+7.1	+0.6	+3.9	+4.1	+33	+56	+64	+38	+24	

FERTILITY EBVs	
SS	DTC
+2.2	-6.2

CARCASS EBVs					
CW	EMA	RIB	RUMP	RBV	IMF
+37	+2.2	+1.8	+2.4	-0.5	+0.7

Traits Observed: BWT 200WT 400WT 600WT SS FAT EMA IMF DOC Genomics

Koanui Bravo T052 was used as a yearling. He is a very complete bull and an easy keeper, much like his dam. As expected with this pedigree, this bull ticks a lot of boxes.



Purchaser:..... Price: \$.....



**LOT 3****KOANUI GALLWAY T080**

Born 21/07/22 HB No. 0216220080P

KOANUI GALLWAY Q570 (P)

{	GRASSMERE GALLANT 152 (P)
	KOANUI ROSE 3568 (P)

KOANUI GIRLIE 3182 (P)

{	KOANUI ROGER 1581 (P)
	KOANUI GIRLIE 1087 (P)

{	MONYMUSK GALLANT 110089 (BM) (P)
	GRASSMERE PRINCESS 826 (P)
{	KOANUI CHEROKEE 9075 (BM) (P)
	KOANUI ROSE 0604 (P)
{	KOANUI RUSSIA 7012 (P)
	KOANUI DAINTY 2453 (PBM) (ET) (P)
{	KOANUI UNRIVALLED 6345 (P)
	KOANUI GIRLIE 2320 (SBM) (P)

\$ INDEX VALUES	
Hereford Prime	+\$120
Beef Heifer	+\$143
Dairy Beef	+\$119

APRIL 2024 HEREFORD BREEDPLAN									
CALVING EASE EBVs				GROWTH & MILK EBVs					
CE DIR	CE DTRS	GEST	BWT	200	400	600	MAT	MILK	
+6.5	+4.5	+1.1	+1.6	+29	+50	+62	+40	+22	

FERTILITY EBVs	
SS	DTC
+3.1	-4.4

CARCASS EBVs					
CW	EMA	RIB	RUMP	RBV	IMF
+48	+4.2	+2.7	+3.4	-0.8	+1.8

Traits Observed: GL CE BWT 200WT 400WT 600WT SS FAT EMA IMF DOC Genomics

Koanui Gallway T080 was used as a yearling. He is very stylish and is a soft easy keeping bull with very high Intramuscular Fat % EBV, in the top 5% of the breed. His sire, Koanui Gallway Q570, was the top selling bull in our 2021 sale who we continue to use in the herd by AI. T080's dam, Koanui Girlie 3182, was a very good cow by Roger 1581 who bred top females. This is a quality bull with a pedigree loaded with good cattle for generations! There are some significant Benchmark animals in this pedigree.



Purchaser:..... Price: \$.....

**LOT 4**

**KOANUI COMMAND T381**

Born 07/08/22

HB No. 0216220381P

**KOANUI COMMAND Q363 (P)** {  
 KOANUI CAPTAIN 7395 (P)  
 KOANUI ANGEL 7125 (P)

{ KOANUI CAPTAIN 4217 (P)  
 KOANUI ROSE 1413 (GBM) (P)  
 { KOANUI MIDRIB 5382 (P)  
 KOANUI ANGEL 5239 (P)

**KOANUI BLUSH 6360 (P)** {  
 KOANUI CHEROKEE 3407 (P)  
 KOANUI BLUSH 2074 (P)

{ KOANUI CHEROKEE 9075 (BM) (P)  
 KOANUI BLUSH 0276 (SBM) (P)  
 { KOANUI SPECTRE 8365 (P)  
 KOANUI BLUSH 9148 (P)

\$ INDEX VALUES	
Hereford Prime	+\$124
Beef Heifer	+\$153
Dairy Beef	+\$127

APRIL 2024 HEREFORD BREEDPLAN									
CALVING EASE EBVs				GROWTH & MILK EBVs					
CE DIR	CE DTRS	GEST	BWT	200	400	600	MAT	MILK	
+6.0	+0.4	+1.1	+3.2	+39	+66	+92	+70	+30	

FERTILITY EBVs	
SS	DTC
+3.6	-5.2

CARCASS EBVs					
CW	EMA	RIB	RUMP	RBY	IMF
+64	+2.4	+1.0	+1.1	-0.2	+1.3

Traits Observed: CE BWT 200WT 400WT 600WT SS FAT EMA IMF DOC Genomics

*Koanui Command T381 was used as a yearling. He has stood out from a calf and we are very excited to see his calves to be born this year. He is very stylish, dark, nice head and has performance to burn. The dam, Koanui Blush 6360 is a top cow and excellent breeder. She was the mother of the Lot 1 bull in the 2021 sale and we are still using him in our AI programme. We will keep 6360's 2023 calf, an exciting "Rainmaker" son. T381 has fertility, Maternal, Growth & Calving Ease. He is just under the top 10% of the breed in Growth traits and Dairy Beef \$ Index, has a desirably moderate Mature Weight and is top 20% for IMF%. Semen to be retained for within-herd use.*



Purchaser:..... Price: \$.....

**LOT 5**

**KOANUI LECTOR T061**

Born 19/07/22

HB No. 0216220061P

**KOANUI LECTOR R084 (P)**

- { KOANUI LEGEND 7109 (P)
- { KOANUI MINERVA 5156 (P)

- { R LEADER 6964 (IMP USA) (BM) (P)
- { KOANUI PEARL 8388 (GBM) (P)
- { MAUNGAHINA PLATINUM120173 (P)
- { KOANUI MINERVA 1025 (SBM) (P)

**KOANUI AMETHYST 7433 (SBM) (P)**

- { KOANUI XCELERATOR 5088 (BM) (P)
- { KOANUI AMETHYST 4445 (P)

- { TRIARA XCELERATOR 594X (IMP CAN) (P)
- { KOANUI GLORY 0303 (P)
- { ROTOITI G123 (P)
- { KOANUI AMETHYST 9202 (P)

\$ INDEX VALUES	
Hereford Prime	+\$118
Beef Heifer	+\$183
Dairy Beef	+\$130

APRIL 2024 HEREFORD BREEDPLAN									
CALVING EASE EBVs				GROWTH & MILK EBVs					
CE DIR	CE DTRS	GEST	BWT	200	400	600	MAT	MILK	
+10.5	+4.4	+0.9	+1.6	+37	+63	+84	+60	+23	

FERTILITY EBVs	
SS	DTC
+1.2	-3.3

CARCASS EBVs					
CW	EMA	RIB	RUMP	RBV	IMF
+61	+3.1	+1.5	+1.7	-0.2	+0.6

Traits Observed: GL CE BWT 200WT 400WT 600WT SS FAT EMA IMF DOC Genomics

*Koanui Lector T061 is a real meat machine with an amazing balance of figures. Thickness right through with a great back end. This bull's dam, Koanui Amethyst 7433 is a Silver Benchmark dam and her 2023 born bull calf is a beast, weighing 425kgs at weaning, heavier than anything else and unheard of against 320 others! A star pedigree of exceptional sires. Lector has very high Calving Ease Direct EBVs, Beef Heifer and Dairy Beef \$ Indexes.*



Purchaser:..... Price: \$.....

**LOT 6**

**KOANUI DIAMOND T106**

Born 22/07/22

HB No. 0216220106P

**KOANUI DIAMOND R326 (P)**

- LIMEHILLS DRAGON 170393 (P)
- KOANUI AMETHYST 5442 (P)

- OKAWA ELECTRA 1117 (BM) (P)
- LIMEHILLS JENNY 140009 (SBM) (P)
- KOANUI NANO 3259 (P)
- KOANUI AMETHYST 3268 (P)

**KOANUI GIRLIE P455 (P)**

- KOANUI EXCITEMENT 5024 (P)
- KOANUI GIRLIE 5255 (P)

- OKAWA MARSHALL 1103 (P)
- KOANUI MINERVA 9079 (P)
- BEECHWOOD BIG TIME (P)
- KOANUI GIRLIE 7258 (P)

\$ INDEX VALUES	
Hereford Prime	+\$118
Beef Heifer	+\$159
Dairy Beef	+\$120

APRIL 2024 HEREFORD BREEDPLAN									
CALVING EASE EBVs					GROWTH & MILK EBVs				
CE DIR	CE DTRS	GEST	BWT	200	400	600	MAT	MILK	
+3.4	+2.9	+0.9	+7.5	+45	+80	+114	+112	+29	

FERTILITY EBVs	
SS	DTC
+2.8	-4.9

CARCASE EBVs					
CW	EMA	RIB	RUMP	RBV	IMF
+72	+3.9	+1.3	+1.5	+0.6	+0.4

Traits Observed: GL CE BWT 200WT 400WT 600WT SS FAT EMA IMF DOC Genomics

*Koanui Diamond T106 is one of the top performers in the sale for Growth traits, at the top of the breed for 200, 400 and 600 day Growth. He has a good carcass, a lot of body and a strong top. His dam has bred very well, she is a very attractive cow and is very Maternal.*



Purchaser:..... Price: \$.....



**LOT 7**

**KOANUI MEMPHIS T239**

Born 01/08/22 HB No. 0216220239P

**MATARIKI MEMPHIS (P)**

- MATARIKI JUGGLER (P)
- MATARIKI JANE 090051 (P)

- KOANUI CHIEFLY 2510 (P)
- MATARIKI GIRLIE 080828 (P)
- KAIRURU DAVIES 060017 (P)
- MATARIKI JANE 050038 (P)

**KOANUI MINERVA Q334 (P)**

- KOANUI EXCITEMENT 5024 (P)
- KOANUI MINERVA 3106 (P)

- OKAWA MARSHALL 1103 (P)
- KOANUI MINERVA 9079 (P)
- KOANUI CRUISE 1270 (P)
- KOANUI MINERVA 1546 (P)

\$ INDEX VALUES	
Hereford Prime	+\$94
Beef Heifer	+\$96
Dairy Beef	+\$98

APRIL 2024 HEREFORD BREEDPLAN									
CALVING EASE EBVs				GROWTH & MILK EBVs					
CE DIR	CE DTRS	GEST	BWT	200	400	600	MAT	MILK	
+2.6	+2.2	-2.4	+4.4	+35	+60	+83	+68	+23	

FERTILITY EBVs	
SS	DTC
+1.8	-3.1

CARCASE EBVs					
CW	EMA	RIB	RUMP	RBY	IMF
+54	+1.9	-0.2	-0.8	+1.4	-0.7

Traits Observed: CE BWT 200WT 400WT 600WT SS FAT EMA IMF DOC Genomics

*This bull's sire, Matariki Memphis, has certainly left his mark and this is a very good example of his progeny showing thickness and a big mid section. Memphis T239 is a top commercial bull.*



Purchaser:..... Price: \$.....

**LOT 8**

**KOANUI GANGES T679**

Born 28/08/22 HB No. 0216220679P

- GRASSMERE GALLANT 152 (P)** { MONYMUSK GALLANT 110089 (BM) (P) { MATARIKI DUNSTAN (P)  
 MONYMUSK DOROTHY 070083 (SBM) (P)  
 GRASSMERE PRINCESS 826 (P) { OKAWA PANDA 9225 (P)  
 GRASSMERE PRINCESS 706 (P)
- KOANUI CYNTHIA 2091 (P)** { KOANUI BEDFORD 0101 (P) { LIMEHILLS BEDFORD 07 902 (P)  
 KOANUI REGAL 8161 (P)  
 KOANUI CYNTHIA 0016 (P) { KOANUI BOULDER 7050 (ET) (P)  
 KOANUI CYNTHIA 2072 (ET) (P)

\$ INDEX VALUES	
Hereford Prime	+\$113
Beef Heifer	+\$103
Dairy Beef	+\$102

APRIL 2024 HEREFORD BREEDPLAN									
CALVING EASE EBVs				GROWTH & MILK EBVs					
CE DIR	CE DTRS	GEST	BWT	200	400	600	MAT	MILK	
+0.7	+4.8	+0.2	+3.9	+33	+57	+71	+47	+26	

FERTILITY EBVs	
SS	DTC
+2.0	-4.9

CARCASS EBVs					
CW	EMA	RIB	RUMP	RBV	IMF
+45	+3.8	+1.8	+2.0	-0.3	+1.4

Traits Observed: CE BWT 200WT 400WT 600WT SS FAT EMA IMF DOC Genomics

*Koanui Ganges T679 is a very tidy and complete bull that will shift anywhere. He has lots of constitution and body. Just under the top 10% of the breed for IMF% or marbling.*



Purchaser:..... Price: \$.....

# LOT 9

## KOANUI MAGIC T294

Born 03/08/22    HB No. 0216220294P

**KOANUI MAJOR P469 (P)**

- MAHUTA MAJOR 6018 (P)
- KOANUI SPIRIT QUEEN 6219 (P)

- LIMEHILLS STARTER 131078 (BM) (P)
- MAHUTA AMETHYST 4036 (P)
- KOANUI BUSTLER 2541 (P)
- KOANUI SPIRIT QUEEN 2308 (P)

**KOANUI BLUSH 7461 (P)**

- KOANUI CHEROKEE 3407 (P)
- KOANUI BLUSH 2021 (SBM) (P)

- KOANUI CHEROKEE 9075 (BM) (P)
- KOANUI BLUSH 0276 (SBM) (P)
- WAIMAIRE BOURBON 101 (P)
- KOANUI BLUSH 8123 (SBM) (P)

\$ INDEX VALUES	
Hereford Prime	+\$170
Beef Heifer	+\$146
Dairy Beef	+\$112

APRIL 2024 HEREFORD BREEDPLAN									
CALVING EASE EBVs				GROWTH & MILK EBVs					
CE DIR	CE DTRS	GEST	BWT	200	400	600	MAT	MILK	
+2.4	+1.1	+2.7	+3.5	+33	+58	+86	+57	+13	

FERTILITY EBVs	
SS	DTC
+4.3	-6.9

CARCASS EBVs					
CW	EMA	RIB	RUMP	RBY	IMF
+50	+0.8	+2.2	+2.9	-1.3	+1.5

**Traits Observed:**    CE BWT 200WT 400WT 600WT SS FAT EMA IMF DOC Genomics

*Koanui Magic T294 is a very stylish and attractive bull that parades well. He has a nice shoulder set. Excellent fertility traits of shorter days to calving and scrotal size. In the top 5% of the breed for Hereford Prime \$ Index. Top 10% for IMF%. Some very significant Benchmark animals in this pedigree shows the quality here! Heterozygous Polled.*



Purchaser:..... Price: \$.....



**LOT 10**

**KOANUI DIAMOND T143**

Born 25/07/22

HB No. 0216220143P

KOANUI DIAMOND R326 (P)

- LIMEHILLS DRAGON 170393 (P)
- KOANUI AMETHYST 5442 (P)

- OKAWA ELECTRA 1117 (BM) (P)
- LIMEHILLS JENNY 140009 (SBM) (P)
- KOANUI NANO 3259 (P)
- KOANUI AMETHYST 3268 (P)

KOANUI GIRLIE 5313 (P)

- KOANUI UNIVERSAL 3297 (P)
- KOANUI GIRLIE 3182 (P)

- KOANUI UNIVERSAL 1518 (P)
- KOANUI CYNTHIA 1121 (P)
- KOANUI ROGER 1581 (P)
- KOANUI GIRLIE 1087 (P)

\$ INDEX VALUES	
Hereford Prime	+\$144
Beef Heifer	+\$194
Dairy Beef	+\$131

APRIL 2024 HEREFORD BREEDPLAN									
CALVING EASE EBVs				GROWTH & MILK EBVs					
CE DIR	CE DTRS	GEST	BWT	200	400	600	MAT	MILK	
+5.4	+5.6	+3.1	+5.4	+43	+75	+107	+97	+23	

FERTILITY EBVs	
SS	DTC
+3.6	-4.7

CARCASS EBVs					
CW	EMA	RIB	RUMP	RBV	IMF
+67	+2.8	+1.4	+1.6	-0.2	+1.3

Traits Observed: GL CE BWT 200WT 400WT 600WT SS FAT EMA IMF DOC Genomics

*Koanui Diamond T143 is one of the Growth bulls in the offering. He is in the top 10% of the breed for all the Growth traits. He has length and style and a set of performance figures that tick a lot of boxes. He is very high in all three \$ Indexes. Top 20% for Hereford Prime, and hovering around the top 10% for both Beef Heifer and Dairy Beef \$ Indexes due to the moderate Calving Ease, high IMF%, and high performance.*



Purchaser:..... Price: \$.....

**LOT 11**

**KOANUI MEMPHIS T065**

Born 20/07/22 HB No. 0216220065P

**MATARIKI MEMPHIS (P)**

- MATARIKI JUGGLER (P)
- MATARIKI JANE 090051 (P)

- KOANUI CHIEFLY 2510 (P)
- MATARIKI GIRLIE 080828 (P)
- KAIRURU DAVIES 060017 (P)
- MATARIKI JANE 050038 (P)

**KOANUI IRANE 5617 (P)**

- KOANUI TECHNO 3062 (BM) (P)
- KOANUI IRANE 2066 (P)

- KOANUI UNANIMOUS 0408 (BM) (P)
- KOANUI BLUSH 6455 (P)
- OKAWA BARITONE 9027 (P)
- KOANUI IRANE 3475 (SBM) (P)

\$ INDEX VALUES	
Hereford Prime	+\$133
Beef Heifer	+\$168
Dairy Beef	+\$119

APRIL 2024 HEREFORD BREEDPLAN									
CALVING EASE EBVs				GROWTH & MILK EBVs					
CE DIR	CE DTRS	GEST	BWT	200	400	600	MAT	MILK	
+4.1	+4.8	-0.4	+4.8	+43	+72	+104	+98	+20	

FERTILITY EBVs	
SS	DTC
+1.4	-4.3

CARCASS EBVs					
CW	EMA	RIB	RUMP	RBV	IMF
+68	+2.2	+0.4	+0.1	+1.0	+0.2

Traits Observed: GL CE BWT 200WT 400WT 600WT SS FAT EMA IMF DOC Genomics

*Koanui Memphis T065. Admire the power and volume of this bull! Both the sire and dam are growthy hence the performance of T065. He is not suitable for mating to heifers. In the top of the breed for the Growth EBV.*



Purchaser:..... Price: \$.....

**LOT 12**

**KOANUI MEMPHIS T622**

Born 24/08/22 HB No. 0216220622P

**MATARIKI MEMPHIS (P)**

- MATARIKI JUGGLER (P)
- MATARIKI JANE 090051 (P)

- KOANUI CHIEFLY 2510 (P)
- MATARIKI GIRLIE 080828 (P)
- KAIRURU DAVIES 060017 (P)
- MATARIKI JANE 050038 (P)

**KOANUI AMETHYST Q572 (P)**

- KOANUI LEGIT 6444 (P)
- KOANUI AMETHYST 3315 (P)

- R LEADER 6964 (IMP USA) (BM) (P)
- KOANUI GLORY 0447 (P)
- KOANUI UNANIMOUS 0408 (BM) (P)
- KOANUI AMETHYST 5218 (P)

\$ INDEX VALUES	
Hereford Prime	+\$137
Beef Heifer	+\$150
Dairy Beef	+\$115

APRIL 2024 HEREFORD BREEDPLAN									
CALVING EASE EBVs				GROWTH & MILK EBVs					
CE DIR	CE DTRS	GEST	BWT	200	400	600	MAT	MILK	
+5.0	+1.7	+0.1	+3.1	+38	+68	+90	+69	+20	

FERTILITY EBVs	
SS	DTC
+4.5	-4.3

CARCASS EBVs					
CW	EMA	RIB	RUMP	RBV	IMF
+61	+3.8	+1.2	+1.3	+0.8	+0.0

Traits Observed: CE BWT 200WT 400WT 600WT SS FAT EMA IMF DOC Genomics

*Koanui Memphis T622 is a stout bull with a sire's presence and a good set of data. Top 25% of the breed for Hereford Prime \$ Index. He is just under top 10% of the breed for 400-Day Growth EBV and he is top 1% of the breed for Scrotal Size EBV.*



Purchaser:..... Price: \$.....

**LOT 13**

**KOANUI PIONEER T189**

Born 28/07/22

HB No. 0216220189P

**YALGOO PIONEER P007 (IMP AUS) (P)**

- GLENTREVOR WALLACE H427 (P)
- YALGOO BUFFY M117 (P)

- SOUTH BUKALONG WALLACE 2 (P)
- GLENTREVOR MARITANA F240 (P)
- NJW 735 M326 TRUST 100W (IMP USA) (BM) (ET) (P)
- YALGOO BUFFY D191 (P)

**KOANUI IRANE 3624 (P)**

- OKAWA BARITONE 9027 (P)
- KOANUI IRANE 0001 (P)

- OKAWA YODELLOR 5113 (BM) (P)
- OKAWA ETHEL 5018 (SBM) (P)
- PINECROFT WRANGLER 0726 (P)
- KOANUI IRANE 4085 (P)

\$ INDEX VALUES	
Hereford Prime	+\$108
Beef Heifer	+\$111
Dairy Beef	+\$99

APRIL 2024 HEREFORD BREEDPLAN									
CALVING EASE EBVs				GROWTH & MILK EBVs					
CE DIR	CE DTRS	GEST	BWT	200	400	600	MAT	MILK	
+4.1	+8.1	+4.8	-0.1	+21	+38	+46	+12	+20	

FERTILITY EBVs	
SS	DTC
+1.4	-2.7

CARCASE EBVs					
CW	EMA	RIB	RUMP	RBV	IMF
+36	+4.2	+1.8	+2.3	+0.4	+0.7

Traits Observed: GL BWT 200WT 400WT 600WT SS FAT EMA IMF DOC Genomics

*Koanui Pioneer T189 is an easy keeping bull with a good back end and good body. Ideal for hard country.*



Purchaser:..... Price: \$.....



# LOT 14

## KOANUI LAYER T560

Born 19/08/22    HB No. 0216220560P

**KOANUI LAYER P028 (P)**

- { KOANUI LAYER 6278 (P)
- { KOANUI REGAL 6629 (P)

- { R LEADER 6964 (IMP USA) (BM) (P)
- { KOANUI CYNTHIA 6099 (P)
- { KOANUI BARITONE 3600 (P)
- { KOANUI REGAL 3111 (S)

**KOANUI CYNTHIA Q138 (P)**

- { CRAIGMORE BATON 160260 (P)
- { KOANUI CYNTHIA 4393 (P)

- { CRAIGMORE BATON 120250 (P)
- { CRAIGMORE QUEENIE 09109 (P)
- { KOANUI BRITON 2044 (P)
- { KOANUI CYNTHIA 1112 (P)

\$ INDEX VALUES	
Hereford Prime	+\$138
Beef Heifer	+\$180
Dairy Beef	+\$120

APRIL 2024 HEREFORD BREEDPLAN									
CALVING EASE EBVs				GROWTH & MILK EBVs					
CE DIR	CE DTRS	GEST	BWT	200	400	600	MAT	MILK	
+5.8	+5.6	-0.6	+3.5	+38	+64	+94	+89	+16	

FERTILITY EBVs	
SS	DTC
+2.0	-4.8

CARCASS EBVs					
CW	EMA	RIB	RUMP	RBV	IMF
+63	+3.3	+2.0	+2.6	+0.0	+0.5

**Traits Observed:**    CE BWT 200WT 400WT 600WT SS FAT EMA IMF DOC Genomics

*Koanui Layer T560 is a smooth and stylish young sire. He has a great set of figures all round and is in the top 25% of the breed for both Hereford Prime and Beef Heifer \$ Indexes. He is a half brother to Koanui Lips T147, by the same sire, Koanui Layer P028. P028 is a bull who's progeny will prove to be ideal in any breeding programme and who is very sought after in Australia.*



Purchaser:..... Price: \$.....

**LOT 15**

**KOANUI PIONEER T225**

Born 30/07/22 HB No. 0216220225P

**YALGOO PIONEER P007 (IMP AUS) (P)**

- GLENTREVOR WALLACE H427 (P)
- YALGOO BUFFY M117 (P)

- SOUTH BUKALONG WALLACE 2 (P)
- GLENTREVOR MARITANA F240 (P)
- NJW 735 M326 TRUST 100W (IMP USA) (BM) (ET) (P)
- YALGOO BUFFY D191 (P)

**KOANUI LYDIA 5167 (P)**

- KOANUI UNIVERSAL 3445 (P)
- KOANUI LYDIA 3052 (P)

- KOANUI UNIVERSAL 1518 (P)
- KOANUI CYNTHIA 1294 (P)
- KOANUI DISPLAY 0603 (P)
- KOANUI LYDIA 4260 (P)

\$ INDEX VALUES	
Hereford Prime	+\$114
Beef Heifer	+\$107
Dairy Beef	+\$107

APRIL 2024 HEREFORD BREEDPLAN									
CALVING EASE EBVs				GROWTH & MILK EBVs					
CE DIR	CE DTRS	GEST	BWT	200	400	600	MAT	MILK	
+4.4	+2.1	+3.7	+0.6	+28	+48	+61	+29	+24	

FERTILITY EBVs	
SS	DTC
+2.8	-3.4

CARCASS EBVs					
CW	EMA	RIB	RUMP	RBV	IMF
+46	+3.6	+1.3	+1.9	+0.7	+0.7

Traits Observed: GL CE BWT 200WT 400WT 600WT SS FAT EMA IMF DOC Genomics

*Koanui Pioneer T225 is an ideal heifer mating bull with smoothness and length but with enough Carcase.*



Purchaser:..... Price: \$.....

**LOT 16**

**KOANUI PIONEER T156**

Born 26/07/22

HB No. 0216220156P

**YALGOO PIONEER P007 (IMP AUS) (P)**

- GLENTREVOR WALLACE H427 (P)
- YALGOO BUFFY M117 (P)

- SOUTH BUKALONG WALLACE 2 (P)
- GLENTREVOR MARITANA F240 (P)
- NJW 735 M326 TRUST 100W (IMP USA) (BM) (ET) (P)
- YALGOO BUFFY D191 (P)

**KOANUI GIRLIE 7530 (P)**

- KOANUI PLATINUM 5327 (P)
- KOANUI GIRLIE 5195 (P)

- MAUNGAHINA PLATINUM120173 (P)
- KOANUI AMETHYST 1023 (GBM) (P)
- KOANUI NANO 3167 (P)
- KOANUI GIRLIE 3347 (SBM) (P)

\$ INDEX VALUES	
Hereford Prime	+\$122
Beef Heifer	+\$133
Dairy Beef	+\$117

APRIL 2024 HEREFORD BREEDPLAN									
CALVING EASE EBVs				GROWTH & MILK EBVs					
CE DIR	CE DTRS	GEST	BWT	200	400	600	MAT	MILK	
+3.9	+4.2	+3.2	+3.3	+36	+62	+85	+55	+24	

FERTILITY EBVs	
SS	DTC
+0.9	-0.6

CARCASS EBVs					
CW	EMA	RIB	RUMP	RBY	IMF
+57	+4.9	+1.0	+1.1	+1.5	+0.7

Traits Observed: GL CE BWT 200WT 400WT 600WT SS FAT EMA IMF DOC Genomics

*Koanui Pioneer T156 is a heifer mating bull that will leave very good replacement females. He has very good Carcase figures, top 10% of the breed for IMF% and top 15% of the breed for Eye Muscle Area EBV. Note the very good maternal cow weight to growth ratios in this bull. Some significant Benchmark females in the bottom side of the pedigree.*



Purchaser:..... Price: \$.....



# LOT 17

## KOANUI PINNACLE T177

Born 27/07/22

HB No. 02162201775

**YALGOO PIONEER P007 (IMP AUS) (P)**

- GLENTREVOR WALLACE H427 (P)
- YALGOO BUFFY M117 (P)

- SOUTH BUKALONG WALLACE 2 (P)
- GLENTREVOR MARITANA F240 (P)
- NJW 735 M326 TRUST 100W (IMP USA) (BM) (ET) (P)
- YALGOO BUFFY D191 (P)

**KOANUI AMETHYST 4132 (P)**

- KOANUI USURPER 1322 (P)
- KOANUI AMETHYST 8164 (P)

- KOANUI UPPER 9102 (P)
- KOANUI IRANE 8230 (P)
- KOANUI DISPLAY 5588 (ET) (P)
- KOANUI AMETHYST 5522 (SBM) (P)

\$ INDEX VALUES	
Hereford Prime	+\$130
Beef Heifer	+\$112
Dairy Beef	+\$108

APRIL 2024 HEREFORD BREEDPLAN									
CALVING EASE EBVs					GROWTH & MILK EBVs				
CE DIR	CE DTRS	GEST	BWT	200	400	600	MAT	MILK	
-0.5	+4.9	+3.1	+5.2	+38	+61	+83	+62	+21	

FERTILITY EBVs	
SS	DTC
+2.4	-3.3

CARCASE EBVs					
CW	EMA	RIB	RUMP	RBV	IMF
+55	+4.7	+2.2	+3.2	-0.2	+1.8

Traits Observed: GL CE BWT 200WT 400WT 600WT SS FAT EMA IMF DOC Genomics

*Koanui Pinnacle T177 is a very easy bull to like with exceptional length, smoothness, soft skin, carcase and performance. An ideal crossing bull that will leave outstanding calves. Dam is a super good cow so don't dismiss this bull with so much to offer. Excellent growth to mature cow weight ratios and IMF% in the top 5% of the breed. Small scurs and heterozygous polled.*



Purchaser: ..... Price: \$ .....

**LOT 18**

**KOANUI MATTEO T424**

Born 10/08/22 HB No. 0216220424P

**KOANUI MAJOR P469 (P)**

- MAHUTA MAJOR 6018 (P)
- KOANUI SPIRIT QUEEN 6219 (P)

- LIMEHILLS STARTER 131078 (BM) (P)
- MAHUTA AMETHYST 4036 (P)
- KOANUI BUSTLER 2541 (P)
- KOANUI SPIRIT QUEEN 2308 (P)

**KOANUI CYNTHIA 6024 (P)**

- OKAWA MARSHALL 1103 (P)
- KOANUI CYNTHIA 2454 (P)

- OKAWA DAVIS 7046 (BM) (P)
- OKAWA AMETHYST 8155 (P)
- KOANUI BOULDER 0223 (P)
- KOANUI CYNTHIA 0133 (P)

\$ INDEX VALUES	
Hereford Prime	+\$194
Beef Heifer	+\$213
Dairy Beef	+\$133

APRIL 2024 HEREFORD BREEDPLAN									
CALVING EASE EBVs				GROWTH & MILK EBVs					
CE DIR	CE DTRS	GEST	BWT	200	400	600	MAT	MILK	
+5.5	+5.0	-0.8	+1.1	+39	+75	+101	+65	+14	

FERTILITY EBVs	
SS	DTC
+2.8	-4.1

CARCASE EBVs					
CW	EMA	RIB	RUMP	RBV	IMF
+73	+2.9	+1.7	+2.1	+0.2	+1.1

Traits Observed: CE BWT 200WT 400WT 600WT SS FAT EMA IMF DOC Genomics

*Matteo T424 is a sale stand out that is easy to like in all ways. We have kept a brother but 424 is just as good. He has a nice sire's head, neck and a very good body and back end. Quality with a dam that is in the top end of the herd with looks and breeding. Incredible \$ Indexes across the board, at the top of the breed for every one!*



Purchaser:..... Price: \$.....

**LOT 19**

**KOANUI MAGIC T266**

Born 02/08/22 HB No. 0216220266P

**KOANUI MAJOR P469 (P)**

- MAHUTA MAJOR 6018 (P)
- KOANUI SPIRIT QUEEN 6219 (P)

- LIMEHILLS STARTER 131078 (BM) (P)
- MAHUTA AMETHYST 4036 (P)
- KOANUI BUSTLER 2541 (P)
- KOANUI SPIRIT QUEEN 2308 (P)

**KOANUI GIRLIE 7062 (P)**

- KOANUI MOUNTAIN 4346 (P)
- KOANUI GIRLIE 5460 (P)

- ORARI GORGE K2 100035 (P)
- KOANUI LYDIA 1475 (P)
- KAIRURU INDIA 110045 (P)
- KOANUI GIRLIE 1411 (SBM) (P)

\$ INDEX VALUES	
Hereford Prime	+\$138
Beef Heifer	+\$122
Dairy Beef	+\$112

APRIL 2024 HEREFORD BREEDPLAN									
CALVING EASE EBVs					GROWTH & MILK EBVs				
CE DIR	CE DTRS	GEST	BWT	200	400	600	MAT	MILK	
+1.5	+0.5	-0.2	+3.6	+40	+65	+96	+75	+18	

FERTILITY EBVs	
SS	DTC
+3.6	-4.1

CARCASS EBVs					
CW	EMA	RIB	RUMP	RBV	IMF
+60	+1.0	+0.8	+0.8	-0.2	+1.0

Traits Observed: CE BWT 200WT 400WT 600WT SS FAT EMA IMF DOC Genomics

*Koanui Magic T266 is another quality Major son with good length hip to pin and beautiful skin. He has a real kind eye is very quiet and he has the volume of body from his dam. Easy to like.*



Purchaser:..... Price: \$.....

**LOT 20**

**KOANUI SULTAN T268**

Born 02/08/22 HB No. 0216220268P

ROCK-END STARTER 9054 (S) { LIMEHILLS STARTER 160062 (P)  
ROCK-END PEARL 15090 (SBM) (P)

{ LIMEHILLS STAMPER 140064 (P)  
{ LIMEHILLS BEAUTY 140225 (P)  
{ ROCK-END UPPER 2053 (P)  
{ WANDO PEARL 1002 (P)

KOANUI DAINTY Q622 (P) { KOANUI PLATINUM 5327 (P)  
KOANUI DAINTY 5479 (P)

{ MAUNGAHINA PLATINUM120173 (P)  
{ KOANUI AMETHYST 1023 (GBM) (P)  
{ KOANUI NANO 3167 (P)  
{ KOANUI DAINTY 3217 (P)

\$ INDEX VALUES	
Hereford Prime	+\$124
Beef Heifer	+\$145
Dairy Beef	+\$115

APRIL 2024 HEREFORD BREEDPLAN									
CALVING EASE EBVs				GROWTH & MILK EBVs					
CE DIR	CE DTRS	GEST	BWT	200	400	600	MAT	MILK	
+4.4	+3.2	-0.2	+3.5	+34	+62	+91	+84	+18	

FERTILITY EBVs	
SS	DTC
+2.6	-3.6

CARCASS EBVs					
CW	EMA	RIB	RUMP	RBV	IMF
+60	+4.0	+1.0	+1.0	+0.8	+0.4

Traits Observed: CE BWT 200WT 400WT 600WT SS FAT EMA IMF DOC Genomics

*Koanui Sultan T268 has plenty of depth and substance like his sire who is a very good bull with exceptional meat content. The dam, Dainty Q622, has another very good bull calf this year. Its easy to see with the blend of this bull's pedigree why he has turned out so well.*



Purchaser:..... Price: \$.....



**LOT 21**

**KOANUI MEMPHIS T039**

Born 17/07/22 HB No. 0216220039P

**MATARIKI MEMPHIS (P)**

- MATARIKI JUGGLER (P)
- MATARIKI JANE 090051 (P)

- KOANUI CHIEFLY 2510 (P)
- MATARIKI GIRLIE 080828 (P)
- KAIRURU DAVIES 060017 (P)
- MATARIKI JANE 050038 (P)

**KOANUI CYNTHIA 7296 (P)**

- BEECHWOOD BIG TIME (P)
- KOANUI CYNTHIA 4646 (P)

- BEECHWOOD TURK (P)
- BEECHWOOD SPOT ON 14 (P)
- KOANUI PACER 1396 (P)
- KOANUI CYNTHIA 2198 (P)

\$ INDEX VALUES	
Hereford Prime	+\$107
Beef Heifer	+\$139
Dairy Beef	+\$112

APRIL 2024 HEREFORD BREEDPLAN									
CALVING EASE EBVs					GROWTH & MILK EBVs				
CE DIR	CE DTRS	GEST	BWT	200	400	600	MAT	MILK	
+4.6	+3.7	-1.3	+4.2	+42	+69	+96	+85	+24	

FERTILITY EBVs	
SS	DTC
+3.4	-3.3

CARCASS EBVs					
CW	EMA	RIB	RUMP	RBV	IMF
+60	+2.0	+0.1	+0.0	+0.7	-0.3

Traits Observed: GL CE BWT 200WT 400WT 600WT SS FAT EMA IMF DOC Genomics

*Koanui Memphis T039 is an ideal commercial bull with a good balance between Calving Ease and performance. Dark with a strong head and very functional setup.*



Purchaser:..... Price: \$.....

**LOT 22**

**KOANUI MAGIC T204**

Born 29/07/22 HB No. 0216220204P

**KOANUI MAJOR P469 (P)**

- MAHUTA MAJOR 6018 (P)
- KOANUI SPIRIT QUEEN 6219 (P)

- LIMEHILLS STARTER 131078 (BM) (P)
- MAHUTA AMETHYST 4036 (P)
- KOANUI BUSTLER 2541 (P)
- KOANUI SPIRIT QUEEN 2308 (P)

**KOANUI IRANE 0496 (P)**

- KOANUI BOULDER 7050 (ET) (P)
- KOANUI IRANE 1074 (GBM) (P)

- YALGOO BOULDER Z250 (IMP AUS) (P)
- KOANUI BLUSH 1011 (PBM) (P)
- KOANUI REBEL U307 (P)
- KOANUI IRANE U142 (SBM) (P)

\$ INDEX VALUES	
Hereford Prime	+\$187
Beef Heifer	+\$183
Dairy Beef	+\$120

APRIL 2024 HEREFORD BREEDPLAN									
CALVING EASE EBVs				GROWTH & MILK EBVs					
CE DIR	CE DTRS	GEST	BWT	200	400	600	MAT	MILK	
+1.9	+3.9	-0.9	+4.7	+45	+78	+108	+84	+12	

FERTILITY EBVs	
SS	DTC
+3.6	-5.6

CARCASS EBVs					
CW	EMA	RIB	RUMP	RBV	IMF
+69	+1.8	+0.7	+0.7	+0.4	+0.9

Traits Observed: CE BWT 200WT 400WT 600WT SS FAT EMA IMF DOC Genomics

*Koanui Magic T204 has outstanding growth figures and is right at the top of the breed for Hereford Prime \$ Index. Also high in the other two indexes. There are some key Koanui Benchmark animals in the female family.*



Purchaser:..... Price: \$.....

**LOT 23**

**KOANUI GANGES T573**

Born 19/08/22

HB No. 0216220573P

GRASSMERE GALLANT 152 (P) { MONYMUSK GALLANT 110089 (BM) (P) { MATARIKI DUNSTAN (P)  
 MONYMUSK DOROTHY 070083 (SBM) (P)  
 GRASSMERE PRINCESS 826 (P) { OKAWA PANDA 9225 (P)  
 GRASSMERE PRINCESS 706 (P)

KOANUI ROSE P609 (BM) (P) { KOANUI XCELERATOR 5088 (BM) (P) { TRIARA XCELERATOR 594X (IMP CAN) (P)  
 KOANUI GLORY 0303 (P)  
 KOANUI ROSE 5304 (P) { KOANUI NANO 3167 (P)  
 KOANUI ROSE 3086 (P)

\$ INDEX VALUES	
Hereford Prime	+\$153
Beef Heifer	+\$159
Dairy Beef	+\$121

APRIL 2024 HEREFORD BREEDPLAN									
CALVING EASE EBVs				GROWTH & MILK EBVs					
CE DIR	CE DTRS	GEST	BWT	200	400	600	MAT	MILK	
+3.4	+2.7	-0.6	+5.9	+43	+69	+96	+69	+21	

FERTILITY EBVs	
SS	DTC
+2.4	-3.5

CARCASS EBVs					
CW	EMA	RIB	RUMP	RBV	IMF
+65	+5.6	+0.6	+0.1	+1.6	+1.1

Traits Observed: CE BWT 200WT 400WT 600WT SS FAT EMA IMF DOC Genomics

Koanui Ganges T573 is a smooth fronted bull with a soft dark skin. With two top sires in the pedigree with Xcelerator and Gallant, there is very good genetics here. Out of a Benchmark dam. Very high Hereford Prime \$ index and excellent figures all round.



Purchaser:..... Price: \$.....



**LOT 24**

**KOANUI LEGEND T613**

Born 23/08/22

HB No. 0216220613P

**KOANUI LEGEND 7109 (P)**

- R LEADER 6964 (IMP USA) (BM) (P)
- KOANUI PEARL 8388 (GBM) (P)

- HYALITE ON TARGET 936 (P)
- R MISS REVOLUTION 1009 (P)
- KOANUI BATON 6187 (BM) (P)
- KOANUI PEARL 6107 (P)

**KOANUI GIRLIE Q341 (P)**

- OTENGI BATON 484 (P)
- KOANUI GIRLIE 6543 (P)

- OTENGI BATON 147 (P)
- OTENGI GOLD 206 (P)
- KOANUI CHEROKEE 3407 (P)
- KOANUI GIRLIE 2511 (SBM) (P)

\$ INDEX VALUES	
Hereford Prime	+\$150
Beef Heifer	+\$203
Dairy Beef	+\$139

APRIL 2024 HEREFORD BREEDPLAN									
CALVING EASE EBVs					GROWTH & MILK EBVs				
CE DIR	CE DTRS	GEST	BWT	200	400	600	MAT	MILK	
+5.5	+4.0	+0.7	+5.8	+48	+79	+123	+112	+24	

FERTILITY EBVs	
SS	DTC
+2.0	-3.9

CARCASS EBVs					
CW	EMA	RIB	RUMP	RBY	IMF
+81	+3.4	+2.0	+2.2	-0.5	+1.5

Traits Observed: CE BWT 200WT 400WT 600WT SS FAT EMA IMF DOC Genomics

As his name suggests, Legend T613 has some legendary figures. Topping the breed for all three \$ Indexes! There is some top end performance here and a bull you can admire, the spring of rib with depth and real substance. Some outstanding Benchmarks in the pedigree and grand-dam Pearl 8388.



Purchaser:..... Price: \$.....

**LOT 25**

**KOANUI SULTAN T518**

Born 15/08/22

HB No. 0216220518P

ROCK-END STARTER 9054 (S) { LIMEHILLS STARTER 160062 (P)  
ROCK-END PEARL 15090 (SBM) (P)

{ LIMEHILLS STAMPER 140064 (P)  
LIMEHILLS BEAUTY 140225 (P)  
{ ROCK-END UPPER 2053 (P)  
WANDO PEARL 1002 (P)

KOANUI IRANE 4408 (P) { KOANUI CHEROKEE 9075 (BM) (P)  
KOANUI IRANE 0597 (P)

{ LIMEHILLS CHIEFTON 680 (P)  
KOANUI CYNTHIA U274 (GBM) (P)  
{ LIMEHILLS BEDFORD 07 902 (P)  
KOANUI IRANE 7005 (ET) (P)

\$ INDEX VALUES	
Hereford Prime	+\$113
Beef Heifer	+\$180
Dairy Beef	+\$130

APRIL 2024 HEREFORD BREEDPLAN									
CALVING EASE EBVs				GROWTH & MILK EBVs					
CE DIR	CE DTRS	GEST	BWT	200	400	600	MAT	MILK	
+6.7	+6.1	+0.7	+3.7	+38	+67	+104	+102	+23	

FERTILITY EBVs	
SS	DTC
+1.3	-2.4

CARCASS EBVs					
CW	EMA	RIB	RUMP	RBV	IMF
+71	+2.8	+0.4	+0.1	+0.3	+1.0

Traits Observed: CE BWT 200WT 400WT 600WT SS FAT EMA IMF DOC Genomics

*Koanui Sultan T518 is very quiet with flat shoulders and great length of body. His dam, Koanui Irane 4408 is performing well at rising 10 years and is a very functional easy keeping cow of moderate frame. High Dairy Beef and Beef Heifer \$ Indexes. Plus some important Benchmark animals in the pedigree.*



Purchaser:..... Price: \$.....

**LOT 26**

**KOANUI PIONEER T105**

Born 22/07/22

HB No. 0216220105P

**YALGOO PIONEER P007 (IMP AUS) (P)**

- GLENTREVOR WALLACE H427 (P)
- YALGOO BUFFY M117 (P)

- SOUTH BUKALONG WALLACE 2 (P)
- GLENTREVOR MARITANA F240 (P)
- NJW 735 M326 TRUST 100W (IMP USA) (BM) (ET) (P)
- YALGOO BUFFY D191 (P)

**KOANUI CYNTHIA 4457 (P)**

- KOANUI RISER 1180 (P)
- KOANUI CYNTHIA 8472 (P)

- KOANUI RUSSIA 7012 (P)
- KOANUI ROSE 5407 (SBM) (P)
- KOANUI SATURN 4119 (P)
- KOANUI CYNTHIA 3019 (ET) (P)

\$ INDEX VALUES	
Hereford Prime	+\$86
Beef Heifer	+\$104
Dairy Beef	+\$100

APRIL 2024 HEREFORD BREEDPLAN									
CALVING EASE EBVs				GROWTH & MILK EBVs					
CE DIR	CE DTRS	GEST	BWT	200	400	600	MAT	MILK	
+2.2	+6.3	-0.2	+3.5	+34	+57	+81	+75	+22	

FERTILITY EBVs	
SS	DTC
+2.7	-2.1

CARCASS EBVs					
CW	EMA	RIB	RUMP	RBV	IMF
+51	+1.6	+0.4	+0.4	+0.8	-0.1

Traits Observed: GL CE BWT 200WT 400WT 600WT SS FAT EMA IMF DOC Genomics

*Koanui Pioneer T105's dam, Cynthia 4457 is breeding very well and T105 is her 4th sale bull. The Pioneer sire line will really be an asset in any cow herd.*



Purchaser:..... Price: \$.....

# LOT 27

## KOANUI LAYER T326

Born 04/08/22 HB No. 0216220326P

**KOANUI LAYER P028 (P)**

- { KOANUI LAYER 6278 (P)
- { KOANUI REGAL 6629 (P)

- { R LEADER 6964 (IMP USA) (BM) (P)
- { KOANUI CYNTHIA 6099 (P)
- { KOANUI BARITONE 3600 (P)
- { KOANUI REGAL 3111 (S)

**KOANUI ROSE Q039 (P)**

- { CRAIGMORE IDOL 170325 (P)
- { KOANUI ROSE 5157 (P)

- { CRAIGMORE IKE 140260 (P)
- { CRAIGMORE LEONORA 140118 (P)
- { KAIRURU INDIA 110045 (P)
- { KOANUI ROSE 1086 (P)

\$ INDEX VALUES	
Hereford Prime	+\$160
Beef Heifer	+\$143
Dairy Beef	+\$106

APRIL 2024 HEREFORD BREEDPLAN									
CALVING EASE EBVs					GROWTH & MILK EBVs				
CE DIR	CE DTRS	GEST	BWT	200	400	600	MAT	MILK	
-0.6	+2.4	-0.7	+5.8	+45	+79	+106	+88	+18	

FERTILITY EBVs	
SS	DTC
+3.0	-6.0

CARCASE EBVs					
CW	EMA	RIB	RUMP	RBV	IMF
+70	+4.5	+1.5	+1.4	+1.1	+0.1

**Traits Observed:** CE BWT 200WT 400WT 600WT SS FAT EMA IMF DOC Genomics

*Koanui Layer T326 has good length with a lot of performance from his dam. High Growth and in the top 10% of the breed for Hereford Prime \$ Index, T326 is a very good meat producer over mixed aged cows.*



Purchaser:..... Price: \$.....



**LOT 28**

**KOANUI MAGIC T201**

Born 29/07/22

HB No. 0216220201P

**KOANUI MAJOR P469 (P)**

- MAHUTA MAJOR 6018 (P)
- KOANUI SPIRIT QUEEN 6219 (P)

- LIMEHILLS STARTER 131078 (BM) (P)
- MAHUTA AMETHYST 4036 (P)
- KOANUI BUSTLER 2541 (P)
- KOANUI SPIRIT QUEEN 2308 (P)

**KOANUI HEATHER 7106 (BM) (P)**

- KOANUI XCELERATOR 5088 (BM) (P)
- KOANUI HEATHER 3613 (P)

- TRIARA XCELERATOR 594X (IMP CAN) (P)
- KOANUI GLORY 0303 (P)
- ORARI GORGE K2 100035 (P)
- KOANUI HEATHER 0202 (P)

\$ INDEX VALUES	
Hereford Prime	+\$176
Beef Heifer	+\$214
Dairy Beef	+\$135

APRIL 2024 HEREFORD BREEDPLAN									
CALVING EASE EBVs				GROWTH & MILK EBVs					
CE DIR	CE DTRS	GEST	BWT	200	400	600	MAT	MILK	
+7.7	+3.1	+0.1	+1.5	+42	+76	+104	+72	+18	

FERTILITY EBVs	
SS	DTC
+2.8	-5.0

CARCASS EBVs					
CW	EMA	RIB	RUMP	RBY	IMF
+78	+2.5	+1.2	+1.4	+0.0	+0.8

Traits Observed: CE BWT 200WT 400WT 600WT SS FAT EMA IMF DOC Genomics

*Magic T201 is an ideal heifer mating bull with the phenotype and data to work well. He is at the top of the breed for all three \$ Indexes! His dam, Koanui Heather 7106, is a Benchmark female.*



Purchaser:..... Price: \$.....

**LOT 29**

**KOANUI MADRID T181**

Born 27/07/22

HB No. 0216220181P

**KOANUI MAJOR R175 (P)**

- KOANUI MAJOR P469 (P)
- KOANUI GRACEFUL 2497 (P)

- MAHUTA MAJOR 6018 (P)
- KOANUI SPIRIT QUEEN 6219 (P)
- NITHDALE INTREPID 080041 (P)
- KOANUI GRACEFUL 4246 (P)

**KOANUI ANGEL R556 (P)**

- KOANUI BROADWAY 7292 (P)
- KOANUI ANGEL 1152 (P)

- BEECHWOOD BIG TIME (P)
- KOANUI LEONORA 4116 (P)
- KOANUI BOULDER 7050 (ET) (P)
- KOANUI ANGEL 14252 (SBM) (P)

\$ INDEX VALUES	
Hereford Prime	+\$140
Beef Heifer	+\$128
Dairy Beef	+\$111

APRIL 2024 HEREFORD BREEDPLAN									
CALVING EASE EBVs				GROWTH & MILK EBVs					
CE DIR	CE DTRS	GEST	BWT	200	400	600	MAT	MILK	
+1.2	+4.6	+1.0	+1.3	+30	+60	+73	+55	+19	

FERTILITY EBVs	
SS	DTC
+2.8	-5.0

CARCASS EBVs					
CW	EMA	RIB	RUMP	RBV	IMF
+55	+4.2	+1.8	+2.3	+0.0	+1.6

Traits Observed: CE BWT 200WT 400WT 600WT SS FAT EMA IMF DOC Genomics

*Koanui Madrid T181 is a Maternal bull with good Carcass data. In the top 30% of the breed for Hereford Prime \$ Index. He is a two year heifer's calf.*



Purchaser:..... Price: \$.....

**LOT 30**

**KOANUI OROPI T672**

Born 27/08/22 HB No. 0216220672P

**MAHUTA OROPI 8074 (P)**

- GRASSMERE GALLANT 972 (P)
- MAHUTA SUE 3041 (P)

- MONYMUSK GALLANT 110089 (BM) (P)
- GRASSMERE DAISY 328 (P)
- CRAIGMORE GOLD 09258 (P)
- MAHUTA SUE 1085 (P)

**KOANUI PEARL 6540 (P)**

- KOANUI MARSHALL 4107 (P)
- KOANUI PEARL 4153 (P)

- OKAWA MARSHALL 1103 (P)
- KOANUI ANGEL 3171 (P)
- KOANUI BUSTLER 2195 (P)
- KOANUI PEARL 2042 (P)

\$ INDEX VALUES	
Hereford Prime	+\$129
Beef Heifer	+\$159
Dairy Beef	+\$125

APRIL 2024 HEREFORD BREEDPLAN									
CALVING EASE EBVs				GROWTH & MILK EBVs					
CE DIR	CE DTRS	GEST	BWT	200	400	600	MAT	MILK	
+5.8	+2.4	+0.7	+4.0	+37	+66	+96	+87	+18	

FERTILITY EBVs	
SS	DTC
+1.3	-3.0

CARCASS EBVs					
CW	EMA	RIB	RUMP	RBV	IMF
+67	+3.3	+0.6	+0.4	+0.8	+0.8

Traits Observed: GL CE BWT 200WT 400WT 600WT SS FAT EMA IMF DOC Genomics

*Oropi T672 is a red bull but his sire and dam are well marked and with the data set and style of this bull, he deserves to be here.*



Purchaser:..... Price: \$.....

**LOT 31**

**KOANUI KAHUNA T676**

Born 28/08/22 HB No. 0216220676P

**KOANUI KAHUNA 7299 (P)**

YAVENVALE KAHUNA K115 (IMP AUS)  
(P)  
KOANUI MINERVA 9079 (P)

CB 57U CAN DOO 102Y (IMP CAN) (P)  
YAVENVALE LOCHIEL LADY D488 (P) (P)  
KOANUI KOOTENAY 6605 (BM) (P)  
KOANUI MINERVA 6473 (P)

**KOANUI GIRLIE P064 (P)**

MAHUTA MAJOR 6018 (P)  
KOANUI GIRLIE 6176 (P)

LIMEHILLS STARTER 131078 (BM) (P)  
MAHUTA AMETHYST 4036 (P)  
BEECHWOOD BIG TIME (P)  
KOANUI GIRLIE 3182 (P)

\$ INDEX VALUES	
Hereford Prime	+\$91
Beef Heifer	+\$152
Dairy Beef	+\$118

APRIL 2024 HEREFORD BREEDPLAN									
CALVING EASE EBVs				GROWTH & MILK EBVs					
CE DIR	CE DTRS	GEST	BWT	200	400	600	MAT	MILK	
+9.2	+4.2	-5.2	+2.4	+34	+50	+82	+63	+26	

FERTILITY EBVs	
SS	DTC
+2.0	-2.8

CARCASS EBVs					
CW	EMA	RIB	RUMP	RBV	IMF
+55	+1.2	+0.6	+0.6	+0.5	-0.3

Traits Observed: CE BWT 200WT 400WT 600WT SS FAT EMA IMF Genomics

*Koanui Kahuna T676 is a very good bull for such a low birth and high Calving Ease, ideal for heifer calving but will grow into a very good bull. Stylish with length and good outlook.*



Purchaser:..... Price: \$.....



**LOT 32**

**KOANUI MEMPHIS T718 (ET)**

Born 03/09/22

HB No. 0216220718P

**MATARIKI MEMPHIS (P)**

- MATARIKI JUGGLER (P)
- MATARIKI JANE 090051 (P)

- KOANUI CHIEFLY 2510 (P)
- MATARIKI GIRLIE 080828 (P)
- KAIRURU DAVIES 060017 (P)
- MATARIKI JANE 050038 (P)

**KOANUI PEARL 1059 (P)**

- KOANUI RUSSIA 7012 (P)
- KOANUI PEARL 2040 (SBM) (ET) (P)

- ARDO RUSSIA 468 (BM) (P)
- KOANUI LEONORA 5174 (SBM) (P)
- KOANUI SUPREME (BM) (P)
- KOANUI PEARL R4 (SBM) (P)

\$ INDEX VALUES	
Hereford Prime	+\$98
Beef Heifer	+\$109
Dairy Beef	+\$100

APRIL 2024 HEREFORD BREEDPLAN									
CALVING EASE EBVs				GROWTH & MILK EBVs					
CE DIR	CE DTRS	GEST	BWT	200	400	600	MAT	MILK	
+0.6	+3.2	-1.1	+4.9	+40	+64	+98	+94	+28	

FERTILITY EBVs	
SS	DTC
+4.3	-4.0

CARCASS EBVs					
CW	EMA	RIB	RUMP	RBV	IMF
+64	+3.2	+0.2	+0.0	+1.9	-0.7

Traits Observed: BWT 200WT 400WT 600WT SS FAT EMA IMF Genomics

*An embryo transfer calf, Memphis T718 is from a very good female with a perfect udder who is very Maternal. This bull will breed very functional, moderate framed performance cattle. We have kept a full brother for in stud use. There are a lot of quality Benchmark animals in this pedigree.*



Purchaser:..... Price: \$.....

**LOT 33**

**KOANUI MAGIC T713**

Born 03/09/22

HB No. 0216220713P

**KOANUI MAJOR P469 (P)**

- MAHUTA MAJOR 6018 (P)
- KOANUI SPIRIT QUEEN 6219 (P)

**KOANUI CYNTHIA 0577 (P)**

- KOANUI SPY 8371 (P)
- KOANUI CYNTHIA 8155 (P)

- LIMEHILLS STARTER 131078 (BM) (P)
- MAHUTA AMETHYST 4036 (P)
- KOANUI BUSTLER 2541 (P)
- KOANUI SPIRIT QUEEN 2308 (P)
- KOANUI SPY 5054 (ET) (P)
- KOANUI DAINTY 4567 (P)
- OKAWA ADMIRAL 5021 (BM) (P)
- KOANUI CYNTHIA 3439 (S)

\$ INDEX VALUES	
Hereford Prime	+\$184
Beef Heifer	+\$207
Dairy Beef	+\$130

APRIL 2024 HEREFORD BREEDPLAN									
CALVING EASE EBVs				GROWTH & MILK EBVs					
CE DIR	CE DTRS	GEST	BWT	200	400	600	MAT	MILK	
+9.6	+3.4	+3.3	+0.1	+33	+61	+81	+35	+10	

FERTILITY EBVs	
SS	DTC
+2.3	-4.1

CARCASS EBVs					
CW	EMA	RIB	RUMP	RBY	IMF
+65	+3.0	+0.6	+0.6	+0.7	+0.6

Traits Observed: BWT 200WT 400WT 600WT SS Genomics

*Koanui Magic T713 is a Boehringer Ingelheim Dairy Sire. He is top of the breed for every \$ Index. The last of a good old cow's, 11th calf. Very quiet and ideal for yearling heifer mating. Heterozygous Polled.*



Purchaser:..... Price: \$.....

**LOT 34**

**KOANUI PIONEER T751 (ET)**

Born 12/09/22

HB No. 0216220751P

**YALGOO PIONEER P007 (IMP AUS) (P)**

- GLENTREVOR WALLACE H427 (P)
- YALGOO BUFFY M117 (P)

- SOUTH BUKALONG WALLACE 2 (P)
- GLENTREVOR MARITANA F240 (P)
- NJW 735 M326 TRUST 100W (IMP USA) (BM) (ET) (P)
- YALGOO BUFFY D191 (P)

**KOANUI LEONORA 4116 (P)**

- ROTOITI G123 (P)
- KOANUI LEONORA 0504 (P)

- LAKE B107 (P)
- STREAMLANDS LADY GRACEFUL 740 (SBM) (P)
- KOANUI RUSSIA 7012 (P)
- KOANUI LEONORA 6148 (P)

\$ INDEX VALUES	
Hereford Prime	+\$84
Beef Heifer	+\$21
Dairy Beef	+\$80

APRIL 2024 HEREFORD BREEDPLAN									
CALVING EASE EBVs				GROWTH & MILK EBVs					
CE DIR	CE DTRS	GEST	BWT	200	400	600	MAT	MILK	
-7.1	+0.9	+3.2	+6.6	+45	+74	+101	+90	+21	

FERTILITY EBVs	
SS	DTC
+1.7	-0.2

CARCASE EBVs					
CW	EMA	RIB	RUMP	RBY	IMF
+66	+3.7	+0.7	+0.9	+1.0	+0.1

Traits Observed: BWT 200WT 400WT(x2) SS FAT EMA IMF Genomics

*Koanui Pioneer T751 is a performance bull with plenty of depth and body. He is an Embryo Transfer calf from a top Donor cow. In the top 5 or 10% of the breed for all the Growth EBVs. This bull will breed exceptional weaners. Heterozygous Polled.*



Purchaser:..... Price: \$.....

**LOT 35**

**KOANUI MAGIC T666**

Born 27/08/22 HB No. 0216220666P

**KOANUI MAJOR P469 (P)**

- MAHUTA MAJOR 6018 (P)
- KOANUI SPIRIT QUEEN 6219 (P)

- LIMEHILLS STARTER 131078 (BM) (P)
- MAHUTA AMETHYST 4036 (P)
- KOANUI BUSTLER 2541 (P)
- KOANUI SPIRIT QUEEN 2308 (P)

**KOANUI BLUSH 4419 (P)**

- KOANUI CRUISE 1270 (P)
- KOANUI BLUSH 2575 (P)

- KOANUI BOULDER 7050 (ET) (P)
- KOANUI CYNTHIA 5643 (P)
- NITHDALE INTREPID 080041 (P)
- KOANUI BLUSH 8468 (SBM) (P)

\$ INDEX VALUES	
Hereford Prime	+\$169
Beef Heifer	+\$177
Dairy Beef	+\$117

APRIL 2024 HEREFORD BREEDPLAN									
CALVING EASE EBVs					GROWTH & MILK EBVs				
CE DIR	CE DTRS	GEST	BWT	200	400	600	MAT	MILK	
+5.7	+4.8	+1.4	+1.7	+32	+65	+83	+51	+9	

FERTILITY EBVs	
SS	DTC
+3.0	-4.1

CARCASE EBVs					
CW	EMA	RIB	RUMP	RBV	IMF
+58	+2.4	+1.4	+1.9	+0.0	+0.5

Traits Observed: CE BWT 200WT 400WT 600WT SS FAT EMA IMF Genomics

Magic T666 is middle of the road and functional. His Hereford Prime \$ Index is at the top of the breed.



Purchaser:..... Price: \$.....



**LOT 36**

**KOANUI MAGIC T188**

Born 28/07/22

HB No. 0216220188P

**KOANUI MAJOR P469 (P)**

- MAHUTA MAJOR 6018 (P)
- KOANUI SPIRIT QUEEN 6219 (P)

**KOANUI CINDY 6119 (SBM) (P)**

- KOANUI TECHNO 3062 (BM) (P)
- KOANUI CINDY 1524 (P)

- LIMEHILLS STARTER 131078 (BM) (P)
- MAHUTA AMETHYST 4036 (P)
- KOANUI BUSTLER 2541 (P)
- KOANUI SPIRIT QUEEN 2308 (P)
- KOANUI UNANIMOUS 0408 (BM) (P)
- KOANUI BLUSH 6455 (P)
- KOANUI CAPTAIN 8624 (P)
- KOANUI CINDY 8278 (P)

\$ INDEX VALUES	
Hereford Prime	+\$172
Beef Heifer	+\$202
Dairy Beef	+\$127

APRIL 2024 HEREFORD BREEDPLAN									
CALVING EASE EBVs				GROWTH & MILK EBVs					
CE DIR	CE DTRS	GEST	BWT	200	400	600	MAT	MILK	
+6.5	+5.5	+0.5	+1.9	+32	+65	+90	+71	+11	

FERTILITY EBVs	
SS	DTC
+4.5	-4.9

CARCASS EBVs					
CW	EMA	RIB	RUMP	RBY	IMF
+64	+3.2	+1.4	+1.7	+0.2	+1.1

Traits Observed: CE BWT 200WT 400WT 600WT SS

*Koanui Magic T188 is a nice fronted bull which is typical of the Major's with their phenotype and data to give high Calving Ease and the dams performance give data across the board. His dam, Koanui Cindy 6119, is a Silver Benchmark female. He is very high in all three \$ Indexes and top 5% of the breed for Hereford Prime.*



Purchaser:..... Price: \$.....

# LOT 37

## KOANUI MEMPHIS T629

Born 24/08/22 HB No. 0216220629P

MATARIKI MEMPHIS (P)

- MATARIKI JUGGLER (P)
- MATARIKI JANE 090051 (P)

- KOANUI CHIEFLY 2510 (P)
- MATARIKI GIRLIE 080828 (P)
- KAIRURU DAVIES 060017 (P)
- MATARIKI JANE 050038 (P)

KOANUI AMETHYST Q691 (P)

- KOANUI LANCELOT 6436 (P)
- KOANUI AMETHYST 5564 (P)

- R LEADER 6964 (IMP USA) (BM) (P)
- KOANUI MINERVA 9079 (P)
- MAHUTA JEHOSEPHAT 3018 (P)
- KOANUI AMETHYST 3117 (P)

\$ INDEX VALUES	
Hereford Prime	+\$105
Beef Heifer	+\$126
Dairy Beef	+\$106

APRIL 2024 HEREFORD BREEDPLAN									
CALVING EASE EBVs				GROWTH & MILK EBVs					
CE DIR	CE DTRS	GEST	BWT	200	400	600	MAT	MILK	
+6.5	+2.7	-1.8	+2.0	+32	+55	+67	+59	+17	

FERTILITY EBVs	
SS	DTC
+3.5	-4.0

CARCASE EBVs					
CW	EMA	RIB	RUMP	RBV	IMF
+48	+3.7	+1.1	+1.3	+1.3	-0.6

Traits Observed: CE BWT 200WT 400WT 600WT SS Genomics

*Koanui Memphis T629 is long and smooth and walks well. There are some very good animals in the back of this pedigree. Will make a good crossing bull.*



Purchaser:..... Price: \$.....

**LOT 38**

**KOANUI SULTAN T610**

Born 23/08/22

HB No. 0216220610P

ROCK-END STARTER 9054 (S) { LIMEHILLS STARTER 160062 (P)  
ROCK-END PEARL 15090 (SBM) (P)

{ LIMEHILLS STAMPER 140064 (P)  
LIMEHILLS BEAUTY 140225 (P)  
{ ROCK-END UPPER 2053 (P)  
WANDO PEARL 1002 (P)

KOANUI LYDIA P287 (P) { KOANUI LEAGUE 6377 (P)  
KOANUI LYDIA 6276 (P)

{ R LEADER 6964 (IMP USA) (BM) (P)  
KOANUI LEONORA 0106 (P)  
{ KOANUI MOUNTAIN 4584 (P)  
KOANUI LYDIA 3273 (P)

\$ INDEX VALUES	
Hereford Prime	+\$123
Beef Heifer	+\$116
Dairy Beef	+\$108

APRIL 2024 HEREFORD BREEDPLAN									
CALVING EASE EBVs				GROWTH & MILK EBVs					
CE DIR	CE DTRS	GEST	BWT	200	400	600	MAT	MILK	
-0.7	+0.6	-1.6	+6.7	+48	+84	+119	+125	+15	

FERTILITY EBVs	
SS	DTC
+3.2	-2.9

CARCASS EBVs					
CW	EMA	RIB	RUMP	RBY	IMF
+74	+3.2	+0.6	+0.2	+0.6	+0.1

Traits Observed: CE BWT 200WT 400WT 600WT SS FAT EMA IMF Genomics

*Sultan T610 is a growth bull that looks it in the paddock and on paper. Good depth and body. He will make a top crossing bull. Heterozygous Polled so perfect over Angus cows for that free lunch - hybrid vigour!*



Purchaser:..... Price: \$.....

**LOT 39**

**KOANUI COMMAND T176**

Born 27/07/22

HB No. 0216220176P

**KOANUI COMMAND Q363 (P)** { KOANUI CAPTAIN 7395 (P)  
 KOANUI ANGEL 7125 (P)

{ KOANUI CAPTAIN 4217 (P)  
 KOANUI ROSE 1413 (GBM) (P)  
 { KOANUI MIDRIB 5382 (P)  
 KOANUI ANGEL 5239 (P)

**KOANUI GLORY P054 (P)** { GRASSMERE GALLANT 152 (P)  
 KOANUI GLORY 2013 (P)

{ MONYMUSK GALLANT 110089 (BM) (P)  
 GRASSMERE PRINCESS 826 (P)  
 { KOANUI DISPLAY 0603 (P)  
 KOANUI GLORY 0494 (P)

\$ INDEX VALUES	
Hereford Prime	+\$97
Beef Heifer	+\$164
Dairy Beef	+\$133

APRIL 2024 HEREFORD BREEDPLAN									
CALVING EASE EBVs					GROWTH & MILK EBVs				
CE DIR	CE DTRS	GEST	BWT	200	400	600	MAT	MILK	
+9.4	+3.2	-2.1	+1.8	+37	+64	+90	+72	+30	

FERTILITY EBVs	
SS	DTC
+1.6	-1.5

CARCASE EBVs					
CW	EMA	RIB	RUMP	RBV	IMF
+66	+2.6	-0.3	-1.2	+1.5	+0.6

Traits Observed: CE BWT 200WT 400WT 600WT SS FAT EMA IMF Genomics

*Koanui Command T176 really stands out with nice presence and he is still quiet. He hits the mark for ease of calving with performance that is what we all want. Look at Command Q363 for this in our programme. T176 is in the top 10% of the breed for Dairy Beef \$ Index.*



Purchaser:..... Price: \$.....



**LOT 40**

**KOANUI GALLWAY T414**

Born 09/08/22

HB No. 0216220414P

KOANUI GALLWAY Q633 (P)

- GRASSMERE GALLANT 152 (P)
- KOANUI LEONORA 4116 (P)

- MONYMUSK GALLANT 110089 (BM) (P)
- GRASSMERE PRINCESS 826 (P)
- ROTOITI G123 (P)
- KOANUI LEONORA 0504 (P)

KOANUI GLORY 3601 (P)

- OKAWA BARITONE 9027 (P)
- KOANUI GLORY 0447 (P)

- OKAWA YODELLOR 5113 (BM) (P)
- OKAWA ETHEL 5018 (SBM) (P)
- KOANUI UNANIMOUS 7174 (P)
- KOANUI GLORY 4060 (P)

\$ INDEX VALUES	
Hereford Prime	+\$63
Beef Heifer	+\$50
Dairy Beef	+\$93

APRIL 2024 HEREFORD BREEDPLAN									
CALVING EASE EBVs				GROWTH & MILK EBVs					
CE DIR	CE DTRS	GEST	BWT	200	400	600	MAT	MILK	
-0.8	+3.3	+1.3	+4.6	+38	+61	+82	+77	+23	

FERTILITY EBVs	
SS	DTC
+1.2	+0.0

CARCASS EBVs					
CW	EMA	RIB	RUMP	RBY	IMF
+55	+2.5	-0.5	-1.6	+1.3	+0.1

Traits Observed: CE BWT 200WT 400WT 600WT SS FAT EMA IMF Genomics

*Koanui Gallway T414 doesn't read well on paper but in the paddock his softness and Docility give him qualities that are very nice to have. Good Growth and Retail Beef Yield % EBVs.*



Purchaser:..... Price: \$.....

# LOT 41

## KOANUI MEMPHIS T023

Born 16/07/22    HB No. 0216220023P

**MATARIKI MEMPHIS (P)**

- { MATARIKI JUGGLER (P)
- { MATARIKI JANE 090051 (P)

- { KOANUI CHIEFLY 2510 (P)
- { MATARIKI GIRLIE 080828 (P)
- { KAIRURU DAVIES 060017 (P)
- { MATARIKI JANE 050038 (P)

**KOANUI PEARL P080 (P)**

- { GRASSMERE GALLANT 152 (P)
- { KOANUI PEARL 8388 (GBM) (P)

- { MONYMUSK GALLANT 110089 (BM) (P)
- { GRASSMERE PRINCESS 826 (P)
- { KOANUI BATON 6187 (BM) (P)
- { KOANUI PEARL 6107 (P)

\$ INDEX VALUES	
Hereford Prime	+\$130
Beef Heifer	+\$156
Dairy Beef	+\$118

APRIL 2024 HEREFORD BREEDPLAN									
CALVING EASE EBVs					GROWTH & MILK EBVs				
CE DIR	CE DTRS	GEST	BWT	200	400	600	MAT	MILK	
+6.1	+3.7	-1.6	+2.2	+35	+55	+77	+61	+19	

FERTILITY EBVs	
SS	DTC
+3.2	-4.7

CARCASS EBVs					
CW	EMA	RIB	RUMP	RBV	IMF
+53	+3.3	+1.0	+0.9	+0.7	+0.7

**Traits Observed:**    GL CE BWT 200WT 400WT 600WT SS FAT EMA IMF DOC Genomics

*Another Memphis son, Koanui Memphis T023 has great length and a great back end. He has a good balanced data set, with a very good dam who goes back to the Gold Benchmark Dam Koanui Pearl 8388, who lasted to 15 years of age.*



Purchaser:..... Price: \$.....

**LOT 42**

**KOANUI GALLWAY T133**

Born 24/07/22

HB No. 0216220133P

KOANUI GALLWAY Q570 (P)

- GRASSMERE GALLANT 152 (P)
- KOANUI ROSE 3568 (P)

- MONYMUSK GALLANT 110089 (BM) (P)
- GRASSMERE PRINCESS 826 (P)
- KOANUI CHEROKEE 9075 (BM) (P)
- KOANUI ROSE 0604 (P)

KOANUI LEONORA 3162 (P)

- KOANUI DISPLAY 0603 (P)
- KOANUI LEONORA 7104 (P)

- KOANUI DISPLAY 7214 (P)
- KOANUI DAINTY 2453 (PBM) (ET) (P)
- KOANUI CLASS 5292 (P)
- KOANUI LEONORA 5714 (P)

\$ INDEX VALUES	
Hereford Prime	+\$115
Beef Heifer	+\$123
Dairy Beef	+\$119

APRIL 2024 HEREFORD BREEDPLAN									
CALVING EASE EBVs				GROWTH & MILK EBVs					
CE DIR	CE DTRS	GEST	BWT	200	400	600	MAT	MILK	
+5.3	+2.3	+2.6	+3.4	+33	+50	+69	+41	+23	

FERTILITY EBVs	
SS	DTC
+2.8	-3.1

CARCASS EBVs					
CW	EMA	RIB	RUMP	RBV	IMF
+43	+2.4	+1.6	+1.8	-0.7	+1.9

Traits Observed: GL CE BWT 200WT 400WT 600WT SS FAT EMA IMF Genomics

A well put together bull in the top 5% of the breed for IMF% EBV. Gallway T133 is sired by the 2021 Koanui sale topper that is very high on Docility and IMF%. Koanui Gallway Q570 sold for \$27,000 and is still used by AI at Koanui, such is our value of him.



Purchaser:..... Price: \$.....

**LOT 43**

**KOANUI GANGES T236**

Born 01/08/22 HB No. 0216220236P

**GRASSMERE GALLANT 152 (P)**

- MONYMUSK GALLANT 110089 (BM) (P)
- GRASSMERE PRINCESS 826 (P)

- MATARIKI DUNSTAN (P)
- MONYMUSK DOROTHY 070083 (SBM) (P)
- OKAWA PANDA 9225 (P)
- GRASSMERE PRINCESS 706 (P)

**KOANUI AMETHYST 6350 (P)**

- KOANUI HOOD 3135 (P)
- KOANUI AMETHYST 0590 (P)

- KOANUI UNANIMOUS 0408 (BM) (P)
- KOANUI LADY REDFIELD 7321 (P)
- KOANUI DISPLAY 7214 (P)
- KOANUI AMETHYST 6297 (P)

\$ INDEX VALUES	
Hereford Prime	+\$173
Beef Heifer	+\$200
Dairy Beef	+\$131

APRIL 2024 HEREFORD BREEDPLAN									
CALVING EASE EBVs					GROWTH & MILK EBVs				
CE DIR	CE DTRS	GEST	BWT	200	400	600	MAT	MILK	
+3.9	+5.3	+2.3	+5.0	+34	+70	+100	+88	+19	

FERTILITY EBVs	
SS	DTC
+3.3	-5.8

CARCASE EBVs					
CW	EMA	RIB	RUMP	RBY	IMF
+67	+6.1	+2.2	+2.5	+0.5	+2.0

Traits Observed: CE BWT 200WT 400WT 600WT SS FAT EMA IMF Genomics

What a set of Carcase data and the rest is good too! Koanui Ganges T236 is a nice moving bull with a good stride. Top of the breed for all three \$ Indexes and in the top 5% of the breed for Hereford Prime \$ Index.



Purchaser:..... Price: \$.....



**LOT 44**

**KOANUI CANTER T388 (ET)**

Born 07/08/22 HB No. 0216220388P

**KOANUI COMMAND Q363 (P)** { KOANUI CAPTAIN 7395 (P)  
 KOANUI ANGEL 7125 (P)

{ KOANUI CAPTAIN 4217 (P)  
 KOANUI ROSE 1413 (GBM) (P)  
 { KOANUI MIDRIB 5382 (P)  
 KOANUI ANGEL 5239 (P)

**KOANUI CYNTHIA 1112 (P)** { KOANUI GOULBURN 8114 (P)  
 KOANUI CYNTHIA 5645 (P)

{ WIRANYA GOULBURN (IMP AUS) (P)  
 KOANUI AMETHYST 2432 (P)  
 { KOANUI UNANIMOUS 3152 (BM) (P)  
 KOANUI CYNTHIA 2365 (P)

\$ INDEX VALUES	
Hereford Prime	+\$131
Beef Heifer	+\$205
Dairy Beef	+\$140

APRIL 2024 HEREFORD BREEDPLAN									
CALVING EASE EBVs				GROWTH & MILK EBVs					
CE DIR	CE DTRS	GEST	BWT	200	400	600	MAT	MILK	
+8.5	+3.9	-1.4	+3.5	+47	+80	+117	+105	+25	

FERTILITY EBVs	
SS	DTC
+3.7	-2.3

CARCASS EBVs					
CW	EMA	RIB	RUMP	RBV	IMF
+85	+2.5	-0.7	-1.5	+1.4	+0.4

Traits Observed: BWT 200WT 400WT 600WT SS FAT EMA IMF Genomics

*Koanui Canter T388 is another Growth bull with high Calving Ease and he is very Maternal. His dam is a top cow and donor female so there is a lot of genetics in this package. In the top 10 % of the breed for Beef Heifer \$ Index and top 5% for Dairy Beef \$ Index.*



Purchaser:..... Price: \$.....

**LOT 45**

**KOANUI MILTON T515**

Born 15/08/22

HB No. 0216220515P

**KOANUI MIDRIB P433 (P)**

- { KOANUI MIDRIB 5382 (P)
- { KOANUI AMETHYST 8358 (P)

- { OKAWA MARSHALL 1103 (P)
- { KOANUI CYNTHIA 1112 (P)
- { KOANUI BATON 6187 (BM) (P)
- { KOANUI AMETHYST 6077 (P)

**KOANUI ROSE 3074 (P)**

- { MATARIKI HOLY-SMOKE (BM) (P)
- { KOANUI ROSE 5108 (P)

- { CAPETHORNE HOT SHOT 03 22 (P)
- { MATARIKI GIRLIE 00323 (P)
- { KOANUI DAYBREAK 0185 (BM) (P)
- { KOANUI ROSE 2337 (P)

\$ INDEX VALUES	
Hereford Prime	+\$146
Beef Heifer	+\$176
Dairy Beef	+\$127

APRIL 2024 HEREFORD BREEDPLAN									
CALVING EASE EBVs				GROWTH & MILK EBVs					
CE DIR	CE DTRS	GEST	BWT	200	400	600	MAT	MILK	
+4.0	+3.2	-1.5	+6.9	+53	+91	+127	+122	+13	

FERTILITY EBVs	
SS	DTC
+3.0	-1.2

CARCASS EBVs					
CW	EMA	RIB	RUMP	RBV	IMF
+85	+2.6	+0.0	-0.1	+0.6	+0.2

Traits Observed: CE BWT 200WT 400WT 600WT SS FAT EMA IMF Genomics

*A power bull with top 1% performance. Koanui Milton T515 has plenty of depth and capacity just like his sire and dam. Suitable for mixed age cows but I like the positive Calving Ease. He is just under top 10% of the breed for Hereford Prime and Dairy Beef \$ Index and high for Beef Heifer \$ Index.*



Purchaser:..... Price: \$.....

**LOT 46**

**KOANUI LEGEND T577**

Born 20/08/22

HB No. 0216220577P

**KOANUI LEGEND 7109 (P)**

- R LEADER 6964 (IMP USA) (BM) (P)
- KOANUI PEARL 8388 (GBM) (P)

- HYALITE ON TARGET 936 (P)
- R MISS REVOLUTION 1009 (P)
- KOANUI BATON 6187 (BM) (P)
- KOANUI PEARL 6107 (P)

**KOANUI GLORY Q634 (P)**

- GRASSMERE GALLANT 152 (P)
- KOANUI GLORY 5576 (P)

- MONYMUSK GALLANT 110089 (BM) (P)
- GRASSMERE PRINCESS 826 (P)
- KOANUI BUSTLER 2396 (P)
- KOANUI GLORY 8258 (P)

\$ INDEX VALUES	
Hereford Prime	+\$141
Beef Heifer	+\$196
Dairy Beef	+\$134

APRIL 2024 HEREFORD BREEDPLAN									
CALVING EASE EBVs				GROWTH & MILK EBVs					
CE DIR	CE DTRS	GEST	BWT	200	400	600	MAT	MILK	
+8.1	+4.6	-1.2	+1.8	+39	+58	+91	+75	+22	

FERTILITY EBVs	
SS	DTC
+2.1	-5.4

CARCASS EBVs					
CW	EMA	RIB	RUMP	RBV	IMF
+62	+2.7	+2.2	+2.7	-0.8	+1.5

Traits Observed: CE BWT 200WT 400WT 600WT SS DOC Genomics

Another super Legend son, T577 has softness and colour with a good body. His progeny will be very appealing with quality. Ideal heifer bull with an X factor. Top of the breed for Beef Heifer and Dairy Beef \$ Index. Also high in Hereford Prime \$ Index. Heterozygous Polled.



Purchaser:..... Price: \$.....

**LOT 47**

**KOANUI X-RAY T693**

Born 29/08/22 HB No. 0216220693P

**KOANUI X-RAY 7078 (P)**

- KOANUI XCELORATOR 5088 (BM) (P)
- KOANUI BLUSH 0291 (P)

- TRIARA XCELORATOR 594X (IMP CAN) (P)
- KOANUI GLORY 0303 (P)
- KOANUI BOULDER 7050 (ET) (P)
- KOANUI BLUSH 2195 (SBM) (P)

**KOANUI GIRLIE Q406 (P)**

- KOANUI KAHUNA 7299 (P)
- KOANUI GIRLIE 7139 (P)

- YAVENVALE KAHUNA K115 (IMP AUS) (P)
- KOANUI MINERVA 9079 (P)
- DAYS ROBIN HOOD H38 (AI) (ET) (P) (P)
- KOANUI GIRLIE 3182 (P)

\$ INDEX VALUES	
Hereford Prime	+\$133
Beef Heifer	+\$120
Dairy Beef	+\$102

APRIL 2024 HEREFORD BREEDPLAN									
CALVING EASE EBVs				GROWTH & MILK EBVs					
CE DIR	CE DTRS	GEST	BWT	200	400	600	MAT	MILK	
-1.3	+3.3	+0.9	+8.5	+45	+71	+107	+79	+27	

FERTILITY EBVs	
SS	DTC
+2.4	-4.5

CARCASS EBVs					
CW	EMA	RIB	RUMP	RBV	IMF
+58	+3.6	+1.8	+2.4	+0.3	+0.6

Traits Observed: CE BWT 200WT 400WT 600WT SS DOC Genomics

Heavier for Birth Weight than we would normally like but this will be fine for mixed aged cows. X-Ray T693 is well put together with a lot to like. He is in the top 10% of the breed for the Growth EBVs and has a comparatively moderate Mature Cow Size EBV so that is desirable!



Purchaser:..... Price: \$.....



**LOT 48**

**KOANUI MAGIC T064**

Born 20/07/22 HB No. 0216220064P

**KOANUI MAJOR P469 (P)**

- MAHUTA MAJOR 6018 (P)
- KOANUI SPIRIT QUEEN 6219 (P)

- LIMEHILLS STARTER 131078 (BM) (P)
- MAHUTA AMETHYST 4036 (P)
- KOANUI BUSTLER 2541 (P)
- KOANUI SPIRIT QUEEN 2308 (P)

**KOANUI GIRL 7108 (P)**

- R LEADER 6964 (IMP USA) (BM) (P)
- KOANUI GIRL 0294 (P)

- HYALITE ON TARGET 936 (P)
- R MISS REVOLUTION 1009 (P)
- PINECROFT WRANGLER 0726 (P)
- KOANUI GIRL 0149 (P)

\$ INDEX VALUES	
Hereford Prime	+\$165
Beef Heifer	+\$178
Dairy Beef	+\$121

APRIL 2024 HEREFORD BREEDPLAN									
CALVING EASE EBVs				GROWTH & MILK EBVs					
CE DIR	CE DTRS	GEST	BWT	200	400	600	MAT	MILK	
+5.9	+4.3	+1.0	+1.9	+38	+63	+86	+62	+9	

FERTILITY EBVs	
SS	DTC
+3.4	-4.8

CARCASS EBVs					
CW	EMA	RIB	RUMP	RBY	IMF
+54	+1.5	+2.5	+2.9	-1.2	+1.0

Traits Observed: GL CE BWT 200WT 400WT 600WT SS FAT EMA IMF DOC Genomics

*Koanui Magic T064 is another bull that will be ideal for mating to heifers. In the top 10% of the breed for Hereford Prime \$ index. Good Fat and IMF% EBVs. He has easier Calving Ease Direct EBVs and lighter Birth Weight while retaining Growth and Carcass.*



Purchaser:..... Price: \$.....

**LOT 49**

**KOANUI SULTAN T601**

Born 21/08/22 HB No. 0216220601P

ROCK-END STARTER 9054 (S) { LIMEHILLS STARTER 160062 (P)  
ROCK-END PEARL 15090 (SBM) (P)

{ LIMEHILLS STAMPER 140064 (P)  
LIMEHILLS BEAUTY 140225 (P)  
{ ROCK-END UPPER 2053 (P)  
WANDO PEARL 1002 (P)

KOANUI BLUSH 7592 (P) { KOANUI HOOD 3135 (P)  
KOANUI BLUSH 4558 (P)

{ KOANUI UNANIMOUS 0408 (BM) (P)  
KOANUI LADY REDFIELD 7321 (P)  
{ KOANUI BRITON 2044 (P)  
KOANUI BLUSH 1474 (P)

\$ INDEX VALUES	
Hereford Prime	+\$130
Beef Heifer	+\$184
Dairy Beef	+\$125

APRIL 2024 HEREFORD BREEDPLAN									
CALVING EASE EBVs				GROWTH & MILK EBVs					
CE DIR	CE DTRS	GEST	BWT	200	400	600	MAT	MILK	
+4.9	+6.5	-1.5	+4.6	+40	+76	+108	+105	+22	

FERTILITY EBVs	
SS	DTC
+2.5	-3.6

CARCASS EBVs					
CW	EMA	RIB	RUMP	RBV	IMF
+72	+4.2	+1.5	+1.7	+0.2	+0.7

Traits Observed: CE BWT 200WT 400WT 600WT SS DOC Genomics

Koanui Sultan T601 has a very solid background with both Hood and Sultan in his pedigree. Excellent dataset, in the top 20% of the breed for Beef Heifer and Dairy Beef \$ Indexes. T601 is an extremely good bull and his dam Koanui Blush 7592 has one of next year's stand-outs by Koanui Milton P433.



Purchaser:..... Price: \$.....

**LOT 50**

**KOANUI GANGES T350**

Born 06/08/22 HB No. 0216220350P

GRASSMERE GALLANT 152 (P) { MONYMUSK GALLANT 110089 (BM) (P) { MATARIKI DUNSTAN (P)  
 MONYMUSK DOROTHY 070083 (SBM) (P)  
 GRASSMERE PRINCESS 826 (P) { OKAWA PANDA 9225 (P)  
 GRASSMERE PRINCESS 706 (P)

KOANUI PEARL 6016 (P) { DAYS ROBIN HOOD H38 (AI) (ET) (P) { ALLENDALE WATERHOUSE D1 (P)  
 (P) { ALLENDALE FANCY U5 (AI) (P)  
 KOANUI PEARL 1010 (P) { KOANUI UNRIVALLED 6345 (P)  
 KOANUI PEARL 5005 (ET) (P)

\$ INDEX VALUES	
Hereford Prime	+\$132
Beef Heifer	+\$132
Dairy Beef	+\$113

APRIL 2024 HEREFORD BREEDPLAN									
CALVING EASE EBVs				GROWTH & MILK EBVs					
CE DIR	CE DTRS	GEST	BWT	200	400	600	MAT	MILK	
-0.5	+5.9	-3.3	+4.7	+41	+66	+100	+84	+23	

FERTILITY EBVs	
SS	DTC
+1.8	-2.0

CARCASE EBVs					
CW	EMA	RIB	RUMP	RBY	IMF
+68	+5.8	+0.5	+0.6	+1.8	+1.1

Traits Observed: CE BWT 200WT 400WT 600WT SS FAT EMA IMF DOC Genomics

*Koanui Ganges T350 is an attractive bull with cosmetics and quality. He is just like his dam who is by Days Robin Hood who did a good job. T350 has nice Carcase data, he is in the top 5% of the breed for Retail Beef Yield % and Eye Muscle Area EBVs. IMF% EBV is in the top 20% of the breed. The growth EBVs are high also.*



Purchaser:..... Price: \$.....

**LOT 51**

**KOANUI MARIO T169**

Born 27/07/22

HB No. 0216220169P

**KOANUI MARIO R099 (P)**

- { KOANUI MAJOR P469 (P)
- { KOANUI CYNTHIA 2600 (P)

**KOANUI GLORY R237 (P)**

- { OTENGI STREAKER 33 (P)
- { KOANUI GLORY P700 (P)

- { MAHUTA MAJOR 6018 (P)
- { KOANUI SPIRIT QUEEN 6219 (P)
- { KOANUI GOULBURN 8114 (P)
- { KOANUI CYNTHIA 7537 (P)

- { LIMEHILLS STREAKER 150368 (BM) (P)
- { OTENGI AMETHYST 1263 (P)
- { KOANUI INDIA 4226 (P)
- { KOANUI GLORY 0447 (P)

\$ INDEX VALUES	
Hereford Prime	+\$134
Beef Heifer	+\$140
Dairy Beef	+\$111

APRIL 2024 HEREFORD BREEDPLAN									
CALVING EASE EBVs				GROWTH & MILK EBVs					
CE DIR	CE DTRS	GEST	BWT	200	400	600	MAT	MILK	
+1.5	+4.9	-0.9	+4.6	+42	+69	+99	+82	+19	

FERTILITY EBVs	
SS	DTC
+2.4	-2.9

CARCASE EBVs					
CW	EMA	RIB	RUMP	RBV	IMF
+67	+4.0	+1.1	+1.3	+0.7	+0.5

Traits Observed: CE BWT 200WT 400WT 600WT SS FAT EMA IMF DOC Genomics

*Koanui Mario T169 has good length and stretch with performance. He is a 2 year heifer's calf that has developed well.*



Purchaser:..... Price: \$.....



**LOT 52**

**KOANUI STAR GAZE T339**

Born 05/08/22 HB No. 0216220339P

**ROCK-END STARTER 9006 (P)**

- LIMEHILLS STARTER 160062 (P)
- ROCK-END PRINCESS 9002 (P)

- LIMEHILLS STAMPER 140064 (P)
- LIMEHILLS BEAUTY 140225 (P)
- ROCK-END IDEA 02 0026 (P)
- ROCK-END PRINCESS 0026 (P)

**KOANUI ANGEL R459 (P)**

- KOANUI X-RAY 7078 (P)
- KOANUI ANGEL 2392 (P)

- KOANUI XCELERATOR 5088 (BM) (P)
- KOANUI BLUSH 0291 (P)
- KOANUI SPECTRE 8365 (P)
- KOANUI ANGEL 9249 (P)

\$ INDEX VALUES	
Hereford Prime	+\$151
Beef Heifer	+\$184
Dairy Beef	+\$116

APRIL 2024 HEREFORD BREEDPLAN									
CALVING EASE EBVs				GROWTH & MILK EBVs					
CE DIR	CE DTRS	GEST	BWT	200	400	600	MAT	MILK	
+4.6	+7.0	-3.4	+1.7	+36	+65	+92	+67	+22	

FERTILITY EBVs	
SS	DTC
+1.3	-5.1

CARCASS EBVs					
CW	EMA	RIB	RUMP	RBY	IMF
+68	+4.2	+2.1	+3.1	+0.5	+0.1

Traits Observed: CE BWT 200WT 400WT 600WT SS DOC Genomics

*Koanui Star-Gaze T339 is a two year heifer's calf. He is from the same female line as Koanui Techno 6179 who sold for \$51,000 in 2018. Just under the top 10% of the breed for Hereford Prime \$ Index.*



Purchaser:..... Price: \$.....

**LOT 53**

**KOANUI ENERGIZER T591**

Born 20/08/22

HB No. 0216220591P

**KOANUI ENERGIZER Q129 (P)**

- KOANUI EXCITEMENT 5024 (P)
- KOANUI PEARL 2176 (SBM) (P)

- OKAWA MARSHALL 1103 (P)
- KOANUI MINERVA 9079 (P)
- OKAWA BARITONE 9027 (P)
- KOANUI PEARL 0510 (P)

**KOANUI GIRL 7577 (P)**

- KOANUI BYLINE 4177 (P)
- KOANUI GIRL 5471 (P)

- KOANUI BUSTLER 2040 (P)
- KOANUI MINERVA 1025 (SBM) (P)
- KOANUI NANO 3259 (P)
- KOANUI GIRL 3636 (P)

\$ INDEX VALUES	
Hereford Prime	+\$80
Beef Heifer	+\$130
Dairy Beef	+\$116

APRIL 2024 HEREFORD BREEDPLAN									
CALVING EASE EBVs				GROWTH & MILK EBVs					
CE DIR	CE DTRS	GEST	BWT	200	400	600	MAT	MILK	
+6.7	+6.0	-1.6	+0.6	+30	+55	+74	+53	+30	

FERTILITY EBVs	
SS	DTC
+1.2	-1.0

CARCASE EBVs					
CW	EMA	RIB	RUMP	RBV	IMF
+61	+2.8	+0.3	+0.0	+1.0	+0.3

Traits Observed: CE BWT 200WT 400WT 600WT SS FAT EMA IMF DOC Genomics

*Koanui Energizer T591 is a very complete bull that stands nice and square. He will leave very maternal and functional daughters. The sire, Koanui Energizer Q129, has an important role in our breeding programme with an outstanding son retained by Koanui in Koanui Energizer T662.*



Purchaser:..... Price: \$.....

**LOT 54**

**KOANUI MAGIC T063**

Born 20/07/22 HB No. 0216220063P

**KOANUI MAJOR P469 (P)**

- MAHUTA MAJOR 6018 (P)
- KOANUI SPIRIT QUEEN 6219 (P)

- LIMEHILLS STARTER 131078 (BM) (P)
- MAHUTA AMETHYST 4036 (P)
- KOANUI BUSTLER 2541 (P)
- KOANUI SPIRIT QUEEN 2308 (P)

**KOANUI AMETHYST 1562 (P)**

- KOANUI UNTOUCHABLE 9216 (P)
- KOANUI AMETHYST 9025 (P)

- KOANUI UNRIVALLED 6345 (P)
- KOANUI IRANE 5103 (SBM) (P)
- KAIRURU DEALER 060044 (P)
- KOANUI AMETHYST 7040 (P)

\$ INDEX VALUES	
Hereford Prime	+\$148
Beef Heifer	+\$167
Dairy Beef	+\$123

APRIL 2024 HEREFORD BREEDPLAN									
CALVING EASE EBVs				GROWTH & MILK EBVs					
CE DIR	CE DTRS	GEST	BWT	200	400	600	MAT	MILK	
+4.6	+3.5	-0.2	+0.5	+35	+67	+98	+81	+17	

FERTILITY EBVs	
SS	DTC
+2.8	-3.2

CARCASS EBVs					
CW	EMA	RIB	RUMP	RBV	IMF
+74	+2.6	+0.8	+1.0	+0.6	+0.6

Traits Observed: GL CE BWT 200WT 400WT 600WT SS FAT EMA IMF Genomics

*Koanui Magic T063 has a very good dam. She was an old cow that went at 11 years of age after rearing Magic, the last of her 10 calves. He has nice neck extension and outlook to go with the Calving Ease. Very high \$ Indexes and just under top 10% of the breed for Hereford Prime \$ index. Heterozygous Polled.*



Purchaser:..... Price: \$.....

## BBSE - Bull Breeding Soundness Evaluation

The bulls listed in this catalogue have met the following parameters that are required to pass the Tararua Breeding Centre Bull Fertility Evaluation carried out on behalf of:

Koanui Polled Herefords Ltd on 6<sup>th</sup> March 2024 & 12<sup>th</sup> April 2024

The Gold standard for this test is to collect the bull by an Artificial Vagina and have the semen assessed by a certified morphologist. All bulls that are tested by Tararua Breeding Centre are tested using this Gold Standard.

LIBIDO	Bulls must demonstrate the ability to mount an “in season” heifer or cow.
PENILE SOUNDNESS	Each bull’s extended penis is examined during mounting for structural soundness, injuries and abnormalities, including deviations, persistent frenulum’s, adhesions, genital warts and injuries that may have occurred while out mating.
SEMEN EVALUATION	Each bull’s ejaculate, which is collected in an artificial vagina, is examined microscopically by a certified Morphologist for Density, Motility, Morphology and must pass the minimum standards of 75% normal at the time of testing.

Signed:



Lucas Reina  
Bovine Reproduction Consultant

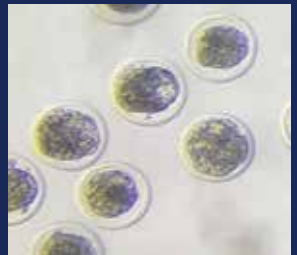




TARARUA BREEDING CENTRE

## WE COVER ALL ASPECTS OF REPRODUCTION

On Centre and on farm semen collection  
Bull fertility evaluations and fresh collections for AI  
AI and ET services  
Import/Export of semen/embryos  
Pre-export isolation



CONTACT US:

06 376 4955

[office@tararuabreedingcentre.co.nz](mailto:office@tararuabreedingcentre.co.nz)

[www.tararuabreedingcentre.co.nz](http://www.tararuabreedingcentre.co.nz)

*Cattle, sheep and goat reproductive specialists*



Tararua Breeding Centre  
Part of Totally Vets Ltd

# Breeding Better Business

As part of New Zealand's largest Livestock network, our team of Genetics Specialists have the best advice, more contacts and greater reach.

If you're looking for a planned approach to success, give us a call today.

**CAM HEGGIE**

Upper North Island/Auctioneer  
027 501 8182

**TOM SUTTOR**

Genetics Representative  
027 446 9967

**SAM WRIGHT**

Auctioneer/Livestock Representative  
027 247 9035

**NEIL COMMON**

Livestock Manager  
027 444 8745

**MATT LORCK**

Livestock Representative  
027 206 4373

**MARK HOUGHTON**

Livestock Representative  
027 597 5844

**DON MCGREGOR**

Livestock Representative  
027 445 7629

**BRENTON GIDDENS**

Livestock Representative  
027 446 9961

**PAUL BAYES**

Livestock Representative  
027 442 5151

**WILL EYRE**

Livestock Representative  
027 202 6902

[www.pggwrightson.co.nz/livestock](http://www.pggwrightson.co.nz/livestock)

 [fb.com/pgwlivestock](https://fb.com/pgwlivestock)

 [instagram.com/pgwlivestock](https://instagram.com/pgwlivestock)



# Catalogue Index - Lot Order

LOT	TAG	HERDBOOK NUMBER
01	T147	0216220147
02	T052	0216220052
03	T080	0216220080
04	T381	0216220381
05	T061	0216220061
06	T106	0216220106
07	T239	0216220239
08	T679	0216220679
09	T294	0216220294
10	T143	0216220143
11	T065	0216220065
12	T622	0216220622
13	T189	0216220189
14	T560	0216220560
15	T225	0216220225
16	T156	0216220156
17	T177	0216220177
18	T424	0216220424
19	T266	0216220266
20	T268	0216220268
21	T039	0216220039
22	T204	0216220204
23	T573	0216220573
24	T613	0216220613
25	T518	0216220518
26	T105	0216220105
27	T326	0216220326

LOT	TAG	HERDBOOK NUMBER
28	T201	0216220201
29	T181	0216220181
30	T672	0216220672
31	T676	0216220676
32	T718	0216220718
33	T713	0216220713
34	T751	0216220751
35	T666	0216220666
36	T188	0216220188
37	T629	0216220629
38	T610	0216220610
39	T176	0216220176
40	T414	0216220414
41	T023	0216220023
42	T133	0216220133
43	T236	0216220236
44	T388	0216220388
45	T515	0216220515
46	T577	0216220577
47	T693	0216220693
48	T064	0216220064
49	T601	0216220601
50	T350	0216220350
51	T169	0216220169
52	T339	0216220339
53	T591	0216220591
54	T063	0216220063

# NOTES



# KOANUI POLLED HEREFORDS Ltd.

## Purchaser's Instruction Slip

To be completed by the purchaser at the end of the sale for the vendor's records. Please complete this slip and hand to clerk at completion of sale. \* indicates compulsory fields

\*NAME: \_\_\_\_\_

\*NAIT NUMBER: \_\_\_\_\_

ADDRESS: \_\_\_\_\_  
\_\_\_\_\_

\*TELEPHONE: \_\_\_\_\_

\*EMAIL: \_\_\_\_\_

### \*DELIVERY DETAILS IF DIFFERENT FROM ABOVE

DELIVERY CONTACT NAME: \_\_\_\_\_

DELIVERY PHONE: \_\_\_\_\_

DELIVERY ADDRESS: \_\_\_\_\_  
\_\_\_\_\_

PURCHASES: Lot No. \_\_\_\_\_ Price: \_\_\_\_\_

PURCHASES: Lot No. \_\_\_\_\_ Price: \_\_\_\_\_

PURCHASES: Lot No. \_\_\_\_\_ Price: \_\_\_\_\_

PURCHASES: Lot No. \_\_\_\_\_ Price: \_\_\_\_\_

Please tick this box if you consent to your information being shared between

..... insurer name ....., ..... vendor or organising body .....  
and/or the relevant livestock agency, for the purpose of offering you insurance.

TRANSPORT INSTRUCTIONS: \_\_\_\_\_  
\_\_\_\_\_  
\_\_\_\_\_



I UNDERSTAND THAT I MUST UNDERTAKE TO INSURE MY BULL/S AT THE END OF THE AUCTION. PLEASE CONTACT YOUR OWN INSURANCE COMPANY.

ADDRESS: \_\_\_\_\_  
\_\_\_\_\_

\*STUD HERD No. IF TRANSFER REQUIRED: \_\_\_\_\_

\*NAME OF PURCHASING LIVESTOCK AGENT: \_\_\_\_\_

\*SIGNATURE OF PURCHASER OR AGENT: \_\_\_\_\_

 Date June 13 2024

# Conditions of Sale

1. This sale is a “Hybrid online and on farm auction sale.” In addition to the normal on-farm auction format the sale will be hosted by bidr® ([www.bidr.co.nz](http://www.bidr.co.nz)) as a HYBRID auction, with online bidding and a live-stream available on sale day. Note the on-farm auctioneer remains in control of the sale and the fall of the hammer.  
All intending ONLINE purchasers must register on bidr® in advance of the sale date, by visiting the website and using the “sign up” button, adding their contact information and nominating the agency they would like to purchase through and account held with that agency. Alternatively, purchasers can organise an agent from one of the agencies listed on bidr® to buy on their behalf.  
All intending ON-FARM purchasers must register with the booking clerk prior to commencement of the sale.
2. On behalf of the vendor, PGG Wrightson Ltd (PGW) will pay a purchasing rebate of 6% of the purchase price excluding GST, plus GST, to livestock agents with a PGW Monthly Account. This also applies to Accredited Agencies on bidr® where the buyer has registered on bidr® under that Accredited Agency.
3. All Lots sold exclusive of G.S.T
4. PAYMENT: Fourteen days after the sale.  
bidr®’s Conditions of Sale and Terms of Use apply. These terms can be inspected at <https://bidr.co.nz/content/user-terms-conditions>  
PGG Wrightson (PGW)’s Monthly Account Terms of Trade also apply to the extent deemed relevant by PGW. The current versions of PGW’s Monthly Account Terms of Trade are also available online at: <https://www.pggwrightson.co.nz/Our-Company/Terms-and-Conditions> or in hardcopy on request.
5. Although all care has been taken in compiling this Catalogue, no responsibility will be taken for any errors or omissions thereof.
6. No warranty will be given with any Lot, and as all Lots are open for inspection prior to the sale, the same are sold with all faults, if any. No compensation shall be made in respect of any fault or error of description of any Lots; however, the vendor reserves the right to make compensation to a buyer if it is the vendor’s wish. It is recommended to inspect bulls before the sale where possible.
7. Every Lot will be at the risk of the purchaser as from the fall of the hammer.
8. **Buyers are advised to insure Bulls.** All Bulls remaining on the property pending delivery should be insured by the Purchaser as no responsibility shall be taken by the Vendor. All bulls are to be uplifted by 1 July, 2024 unless arrangements prior to the sale have been made.
9. ALL STUD BULLS purchased must be uplifted as soon as transport is available. Transfers will be available on Stud Bulls. Please provide Transfer Herd Number(s) to the vendor on the Purchaser’s Slip if a transfer is required.
10. All Bulls have been Service and Semen tested. All bulls are BVD Tested Negative and vaccinated for BVD with Hiprabovis prior to sale.
11. T.B. STATUS C10.
12. All successful purchasers (including bidr purchasers) must complete a KOANUI Purchasers Slip. Please complete all compulsory fields and return to your agent immediately after the sale.

# Catalogue Index - Tag Order

TAG	LOT	HERDBOOK NUMBER
T023	41	0216220023
T039	21	0216220039
T052	2	0216220052
T061	5	0216220061
T063	54	0216220063
T064	48	0216220064
T065	11	0216220065
T080	3	0216220080
T105	26	0216220105
T106	6	0216220106
T133	42	0216220133
T143	10	0216220143
T147	SEMEN	0216220147
T156	16	0216220156
T169	51	0216220169
T176	39	0216220176
T177	17	0216220177
T181	29	0216220181
T188	36	0216220188
T189	13	0216220189
T201	28	0216220201
T204	22	0216220204
T225	15	0216220225
T236	43	0216220236
T239	7	0216220239
T266	19	0216220266
T268	20	0216220268

TAG	LOT	HERDBOOK NUMBER
T294	9	0216220294
T326	27	0216220326
T339	52	0216220339
T350	50	0216220350
T381	4	0216220381
T388	44	0216220388
T414	40	0216220414
T424	18	0216220424
T515	45	0216220515
T518	25	0216220518
T560	14	0216220560
T573	23	0216220573
T577	46	0216220577
T591	53	0216220591
T601	49	0216220601
T610	38	0216220610
T613	24	0216220613
T622	12	0216220622
T629	37	0216220629
T666	35	0216220666
T672	30	0216220672
T676	31	0216220676
T679	8	0216220679
T693	47	0216220693
T713	33	0216220713
T718	32	0216220718
T751	34	0216220751



**EXCITING SEMEN PACKAGE**

**Lot 1 Koanui Lips T147**

**DON'T MISS OUT ON THIS 100 STRAW PACKAGE!**

*For more info, or to visit, please contact:*

**Chris, Jennifer & the Chesterman family**

443 Maraetotara Rd, RD12, Havelock North, 4294

**Phone:** +64 6874 7844 **Mobile:** +64 27 4777 637

**Email:** [info@koanuiherefords.co.nz](mailto:info@koanuiherefords.co.nz)

**[www.koanuiherefords.co.nz](http://www.koanuiherefords.co.nz)**