

KOANUI

POLLED HEREFORDS

2022 Sale Catalogue



ON FARM AUCTION:
1pm, Thursday 16 June

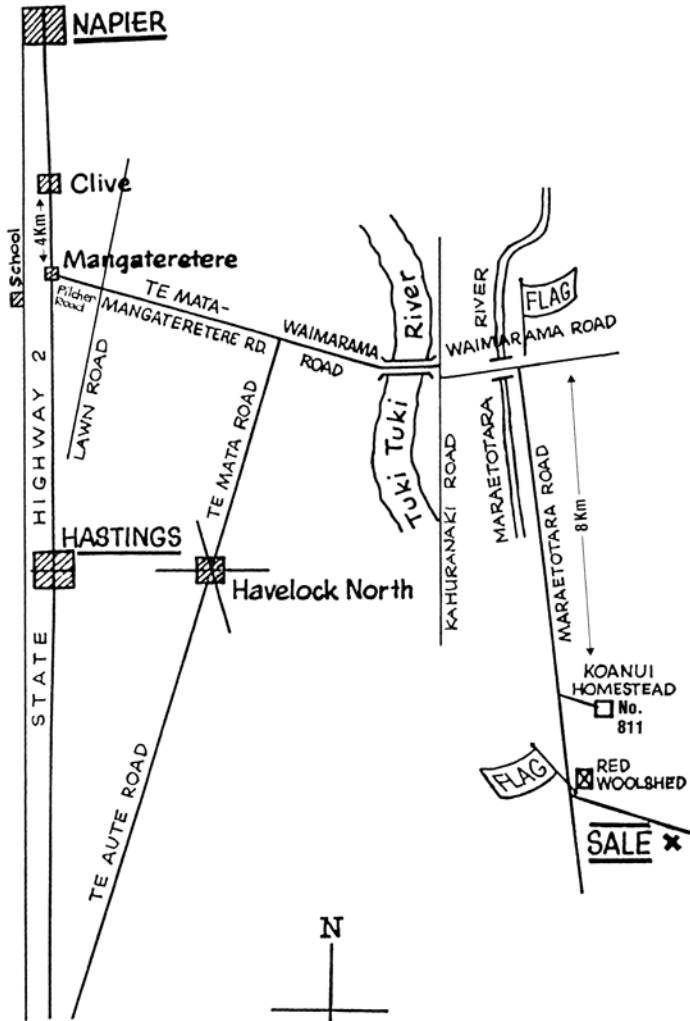
50 year anniversary sale!
60 rising two-year-old bulls
10 rising two-year PTIC heifers

At 'The Sale Shed'
Past 811 Maraetotara Rd
Havelock North

**GOLD
HEIFER
SALE!**

www.koanuiherefords.co.nz





2022 ACCOMMODATION OFFER

*Quote Koanui when booking to secure
\$160 lower corporate rate!*

Reservations free phone

0508 50 40 30

stay@tematalodgemotel.co.nz

tematalodgemotel.co.nz



Te Mata Lodge

21 Porter Drive
Havelock North

*Only 20 minutes drive
to the sale shed*

KPH | KOANUI POLLED HEREFORDS

Celebrating 50 years!

ON FARM AUCTION with bidr® 1 pm Thursday 16 June

The 2022 Sale is being held on-farm and online by bidr hybrid auction. We encourage you to view the animals prior to sale. Spark reception and internet will be available on sale day. Contact Koanui or your livestock agent for further information.

- More than 800 stud cows
- Rigorous selection
- Performance recorded
- Bulls semen & service tested
- BVD vaccinated
- TB status C10
- *Satisfaction guaranteed!*

CATALOGUE UPDATE

26/5/2022

Withdrawn Bulls

Lots 12, 19, 20, 24, 26, 28, 40, 44 and 49

Replacement Bulls

Lots 71, 72, 73, 74, 75

Inspection always welcomed!

Agent contacts:

PGG Wrightson

Cam Heggie 027 501 8182
Simon Smith 027 444 0733
Sam Wright 027 247 9035

Carrfields Ltd.

Tom Suttor 027 616 4504

WR Dyer Livestock

Ross Dyer 027 433 3381

Redshaw Livestock Ltd.

Dean Freeman 027 445 1944

Koanui contacts:

Home phone 06 874 7844
Chris Chesterman 027 488 8635
Jennifer Chesterman 027 477 7637
Russell Dalldorf 027 250 9096

info@koanuiherefords.co.nz

Follow us on Facebook for updates

www.facebook.com/KoanuiPH/

The Koanui Sale 2022

Dear friends and fellow cattle breeders,

Welcome to 50 years of Koanui Polled Herefords!

Fred and Annette Chesterman established their passion project, Koanui Polled Hereford Stud, in 1972. After purchasing a few complete herds, they were able to rapidly grow the herd to two hundred cows. Now, at more than eight hundred registered females, Koanui has built its legacy on passion, commitment, honesty, and integrity.

Commitment to the Koanui breeding programme has always been prioritised, sourcing the best genetics from around the world. We've had numerous high-priced purchases of top-quality bulls over the years, with some stand out sires including: Kaitoa Kendall, National Champion 1979; Strathavon Master, NZ record priced bull in 1975; Braxton Giant 4 record priced in 1984; and Awhea Arrow 0030 purchased for a NZ Hereford record price of \$75,000 in 2002. These investments in bulls also included the early importation of semen from North America and Australia, leading to the establishment of a herd that we have always been very proud of.

Without a doubt, the arrival of Koanui Blueprint in 1989 was a high point in the stud's success. Blueprint became a famous Meat and Wool Cup Winner on the show circuits in the 90s. His progeny sold for record prices on farm and overseas where he was used in eleven countries worldwide, including being named 'Sire of the Year' in Australia in 1995. To this day, you can still find Blueprint genetics in high-performing bulls world-wide.



Fred and Annette at the 1995 Sydney show when Blueprint won Australian sire of the year.

We thoroughly enjoyed showing cattle over the years - and had some great success too. In the mid-1990's, as the next generation of Chesterman at Koanui began to arrive, the Koanui programme shifted emphasis away from the show ring. Better understanding of accurate genetic evaluation, performance recording large mobs with no animals preferentially treated (which the show ring necessitates) became our priority. Breeding for performance, structural soundness, maternal strength and accuracy of genetic evaluation was the revised focus.

Our commitment at Koanui has always been towards our cow herd. Sound, functional, and productive females are the future of our business. With more than eight hundred females, all animals need to earn their place in the herd

with rigorous selection from first calving at two years of age. We record and test all our animals, keeping only the best. This means we can confidently stand behind what we sell commercially – stock that will ensure the profitability of all our clients within the beef industry.

Our family and staff are very grateful and committed to continuing the Koanui legacy that Fred and Annette created. We will always do our best to continue to support our clients by producing the best cattle we can. We are very grateful to all our clients and agents over the past 50 years. You are all invited to come and enjoy our hospitality at our 50th celebratory on-farm bull sale on 16 June, and to continue this journey with us into the future.

Kindest regards

Chris and Jennifer Chesterman and family

Gold Heifer Sale

10 rising two-year-old heifers (pregnancy tested in calf)

The inclusion of 10 Rising two-year old in calf heifers in the 2022 Koanui Sale is a golden opportunity to secure a Koanui female in celebration of our 50th Anniversary. These females are at the cutting edge of our programme and have real potential to breed a standout future herd sire.

“This is why we don’t sell females” Chris exclaimed while writing the comments on the heifer selection. He doesn’t want to part with any females at any time, which is why it really is a one-off!

“Looking at the sires in their pedigrees and the dams they are out of you can see they are special” Chris said. “On top of this, the fact that several are out of two-year heifers themselves and have incredible mating sires, these heifers have real potential to breed that next herd sire.

“I truly believe that a calf from any of these females could return many times more than the initial investment.”

We love the cow herd, and our young females represent the future of the Koanui herd, so they are hard to part with. Yet we are proud to present this opportunity to celebrate this 50th anniversary sale and we will still have more than eight hundred registered females to calve this year.

We’ll watch the performance of these heifers in their new homes with great interest. “I certainly wouldn’t hesitate to purchase a bull from any of them in the future as they all have great pedigrees and a balanced set of figures,” says Chris.

We hope you enjoy this golden opportunity and wish you well with your purchases in the celebratory sale.

EBVs Explained

Estimated Breeding Values (EBVs) are estimates of the animal's genetic merit, half of which will be passed onto its progeny. They are expressed in units of measurement for each trait. For more information and EBV Tip sheets refer to <http://breedplan.une.edu.au>

Calving Ease EBVs

CE DIR – Calving Ease Direct % indicates how easily this bull's progeny are likely to be born. A higher figure means a higher likelihood of easy calving.

CE DTRS – % indicates how easily this bull's daughters are likely to calve. A higher figure means a higher likelihood of easy calving in the daughters.

GEST – Gestation Length in days indicates the predicted gestation length relative to average, the lower the value the shorter gestation length of the bull's calves.

BWT – Birth Weight (kg) predicted from analysis of actual birth weight data, the lower the value the smaller the sire's contribution to the weight of the calf at birth.

Growth and Milk EBVs

200 – 200 Day growth EBV (kg) is calculated from the weight of animals taken between 80 and 300 days of age. Values are adjusted to 200 days and for dam age. This EBV is the best single estimate of an animal's genetic merit for growth to early ages.

400 – Day Weight EBV (kg) is calculated from the weight of progeny taken between 301 and 500 days of age, adjusted to 400 days and for dam age. This EBV is the best single estimate of an animal's genetic merit for yearling weight.

600 – 600-Day Weight EBV (kg) is calculated from the weight of progeny taken between 501 and 900 days of age, adjusted to 600 days and for dam age. This EBV is the best single estimate of an animal's genetic merit for growth beyond yearling age.

MAT – Mature Cow Weight EBV (kg) is based on the cow weight when the calf is weighed for weaning, adjusted to 5 years of age. This EBV is an estimate of the genetic difference in cow weight at 5 years of age and is an indicator of growth at later ages and potential feed maintenance requirements of the females in the breeding herd.

MILK – 200-Day Milk EBV (kg) is an estimate of an animal's milking ability. For sires, this EBV is indicative of their daughter's milking ability as it affects the 200 day weight of their calves.

Fertility EBVs

SS - Scrotal Size (cm) is an indicator of male fertility in regards to semen quality and quantity. Higher (positive) EBVs indicate higher fertility. SS is also positively associated with female fertility.

DTC – Days to Calving (days) is an indicator of female fertility. Lower, or more negative, Days to Calving EBVs are generally more favourable reflecting females that get in calf quicker after mating, have early puberty and early return to oestrous after calving.

NZ HEREFORD Breed Average EBVs for 2020 Born Calves

CALVING EASE EBVs				GROWTH & MILK EBVs					FERTILITY	
CE DIR	CE DTRS	GEST	BWT	200	400	600	MAT	MILK	SS	DTC
+2.4	+2.1	-0.7	+4.0	+33	+55	+78	+66	+17	+2.1	-3.0

Carcase EBVs

CW - Carcass Weight EBV (kg) estimates the genetic difference in carcass weight at a standard age of 650 days. More positive EBVs indicate heavier carcasses at 650 days of age.

EMA - Eye Muscle Area EBV (cm²) estimates genetic differences in eye muscle area at the 12/13th rib site of a 300kg dressed carcass. More positive EBVs indicate better muscling on animals.

RIB - Rib Fat EBV (mm) estimates the genetic differences in fat depth at the 12/13th rib in a 300kg dressed carcass. More positive EBVs indicate more subcutaneous fat and earlier maturity.

RUMP - Rump Fat EBV (mm) estimates the genetic differences in fat depth at the P8 site on a 300kg dressed carcass. More positive EBVs indicate more subcutaneous fat and earlier maturity. Two fat EBVs are listed as there is variation between animals regarding fat depth at the two sites.

RBV – Retail Beef Yield % EBVs are estimates of genetic differences between animals in boned out retail beef yield in a standard weight steer carcass. RBV EBVs are reported as differences in percentage (%) yield. Larger, more positive, RBV EBVs are generally more favourable.

IMF - Intramuscular Fat % EBVs are estimates of generic difference between animals in intramuscular fat (marbling) at the 12/13 rib site in a 300kg carcass. Larger, more positive, IMF EBVs are generally more favourable.

\$ Index Values

A selection index combines the EBVs with economic information (costs and returns) for specific market and production systems to rank animals based on relative profit values.

Hereford Prime Index - Estimates the genetic differences between animals in net profitability per mixed age cow joined for a typical self-replacing commercial herd. Heifers are retained for breeding and so maternal traits are of importance. Steers target 550 kg live weight (300 kg carcass weight & 7 mm P8 fat) at 20 months of age, and heifers 475 kg (260 kg carcass weight & 8 mm fat depth), at 22 months of age.

Beef Heifer Index - Estimates the genetic differences between animals in net profitability per yearling heifer joined for a typical self-replacing commercial herd. Steers target 510 kg live weight (280 kg HSCW and 7 mm P8 fat depth) and heifers 450 kg (250 kg HSCW and 8 mm P8 fat depth) at 20 months of age.

Dairy Beef Index - Estimates the genetic differences between animals in net profitability per mixed age dairy cow joined with all progeny destined for slaughter. Steers and heifer progeny target 550 kg live weight (300 kg carcass weight and 6 mm fat depth) at 24 months of age and at 475 kg live weight (260 kg carcass weight and 7 mm fat depth) at 22 months, respectively.

NZ HEREFORD Breed Average EBVs for 2020 Born Calves

CARCASS EBVs					
CW	EMA	RIB	RUMP	RBV	IMF
+51	+3.8	+0.8	+1.0	+0.8	+0.6

\$ INDEX VALUES		
HPrime	Beef Heifer	Dairy Beef
+113	+118	+107

EBV Percentile Bands for All 2020 born NZ Herefords

	Calv-Ease				Birth				Growth				Fert				Carcase				Indexes				Extra		
	Dir	Dir%	GL	Bwt	200	400	600	Mwt	Milk	SS	DC	days	Cwt	EMA	Rib	P8	RBY	IMF	HP	BH	DB	Doc					
	%				kg				cm				kg				mm				%					\$	
High 1%	+12.5	+9.0	-6.6	-1.5	+49	+81	+117	+111	+28	+4.3	-6.7	+7.4	+2.7	+3.8	+2.6	+2.3	+173	+233	+140	+21							
High 5%	+10.4	+7.2	-4.0	+0.2	+44	+73	+104	+97	+24	+3.5	-5.5	+6.9	+2.1	+2.9	+2.0	+1.7	+155	+202	+131	+17							
High 10%	+9.0	+6.1	-3.0	+1.1	+42	+69	+98	+91	+23	+3.2	-5.0	+6.5	+1.8	+2.4	+1.7	+1.4	+144	+185	+126	+14							
High 15%	+7.9	+5.4	-2.4	+1.7	+40	+67	+94	+86	+22	+2.9	-4.6	+6.3	+1.6	+2.1	+1.5	+1.2	+138	+173	+122	+12							
High 20%	+7.0	+4.8	-2.0	+2.1	+39	+65	+91	+82	+21	+2.8	-4.3	+6.0	+1.5	+1.9	+1.3	+1.1	+133	+164	+120	+10							
High 25%	+6.1	+4.3	-1.6	+2.5	+38	+63	+89	+80	+20	+2.6	-4.1	+5.9	+1.3	+1.7	+1.2	+1.0	+128	+155	+118	+9							
High 30%	+5.3	+3.9	-1.4	+2.9	+37	+61	+86	+77	+19	+2.5	-3.9	+5.7	+1.2	+1.5	+1.1	+0.9	+125	+148	+116	+7							
High 35%	+4.6	+3.4	-1.1	+3.2	+36	+60	+84	+74	+19	+2.4	-3.6	+5.5	+1.1	+1.4	+1.0	+0.8	+122	+141	+114	+6							
High 40%	+3.9	+3.0	-0.9	+3.5	+35	+58	+82	+71	+18	+2.3	-3.4	+5.4	+1.0	+1.2	+0.9	+0.7	+118	+134	+112	+5							
High 45%	+3.2	+2.6	-0.7	+3.8	+34	+57	+80	+69	+17	+2.2	-3.3	+5.3	+0.9	+1.1	+0.8	+0.6	+115	+127	+110	+4							
50%	+2.5	+2.2	-0.5	+4.1	+33	+56	+78	+67	+17	+2.1	-3.1	+5.1	+0.8	+1.0	+0.7	+0.5	+112	+121	+108	+3							
Low 45%	+1.8	+1.7	-0.3	+4.4	+33	+54	+76	+64	+16	+2.0	-2.9	+5.0	+0.7	+0.8	+0.7	+0.5	+109	+114	+106	+2							
Low 40%	+1.2	+1.3	-0.1	+4.6	+32	+53	+74	+62	+16	+1.9	-2.7	+4.8	+0.6	+0.7	+0.6	+0.4	+106	+107	+104	+1							
Low 35%	+0.5	+0.9	+0.1	+4.9	+31	+51	+72	+59	+15	+1.8	-2.5	+4.7	+0.5	+0.5	+0.5	+0.3	+103	+99	+102	+0							
Low 30%	-0.2	+0.4	+0.3	+5.2	+30	+50	+70	+56	+14	+1.7	-2.2	+4.5	+0.4	+0.4	+0.4	+0.2	+100	+92	+100	-1							
Low 25%	-0.9	-0.1	+0.5	+5.5	+29	+48	+67	+53	+14	+1.6	-2.0	+4.4	+0.3	+0.2	+0.3	+0.2	+96	+83	+97	-2							
Low 20%	-1.8	-0.6	+0.8	+5.8	+27	+46	+64	+50	+13	+1.4	-1.7	+4.2	+0.2	+0.1	+0.2	+0.1	+92	+73	+95	-3							
Low 15%	-2.8	-1.2	+1.0	+6.2	+26	+44	+61	+46	+12	+1.3	-1.4	+4.0	+0.0	-0.1	+0.0	+0.0	+87	+61	+91	-5							
Low 10%	-4.0	-2.0	+1.4	+6.6	+24	+41	+57	+40	+11	+1.1	-1.1	+3.7	+2.2	-0.2	-0.4	-0.1	+81	+46	+87	-7							
Low 5%	-6.0	-3.2	+2.0	+7.3	+22	+37	+50	+32	+10	+0.8	-0.6	+3.3	+1.8	-0.5	-0.8	-0.4	+73	+22	+79	-12							
Low 1%	-10.1	-5.6	+3.4	+8.5	+15	+25	+34	+12	+7	+0.1	+0.2	+2.3	+1.0	-1.1	-1.7	-1.0	+52	-28	+61	-23							

REFERENCE SIRE**MATARIKI KINSIT**

BORN 28/09/17

HB No. 0281170684P

MATARIKI 110637 (P)

MATARIKI JAULIN 080665 (S)
 MATARIKI VICTORIA 070351 (P)

OKAWA ADMIRAL 5030 (P)
 MATARIKI JANE 050191 (J)
 MATARIKI DAYBREAK (P)
 MATARIKI VICTORIA 050092 (P)

MATARIKI VICTORIA 120223 (P)

MATARIKI HERMAN 070400 (P)
 MATARIKI VICTORIA 080691 (P)

LEADER 030232 (J)
 MATARIKI GIRLIE 03868 (P)
 GRASSMERE KING 268 (P)
 MATARIKI VICTORIA 041090 (P)

\$ INDEX VALUES	
Hereford Prime	+\$108
Beef Heifer	+\$40
Dairy Beef	+\$82

CALVING EASE EBVs				GROWTH & MILK EBVs				
CE DIR	CE DTRS	GEST	BWT	200	400	600	MAT	MILK
-6.7	+0.1	+0.7	+5.8	+38	+66	+95	+90	+16

FERTILITY EBVs	
SS	DTC
+3.0	-2.6

CARCASE EBVs					
CW	EMA	RIB	RUMP	RBY	IMF
+64	+5.9	+1.3	+1.5	+1.3	+0.3

Traits Observed: CE BWT 200WT 400WT 600WT SS FAT EMA IMF Genomics

Purchased from Matariki in 2019 for his carcass and correctness, Kinsit has delivered. A powerhouse bull for performance and strength with a good constitution. Kinsit is a very consistent breeder making him easy to use for his type. Homozygous Polled.

REFERENCE SIRE**LIMEHILLS DRAGON 170393**

BORN 20/09/17

HB No. 0677170393P

OKAWA ELECTRA 1117 (P)

LIMEHILLS ELECTRA 07 888 (P)
 OKAWA BELLA 7022 (SBM) (P)

LIMEHILLS YARRAM 412 (P)
 LIMEHILLS ALMOND 267 (P)
 OKAWA ADMIRAL 5021 (BM) (P)
 OKAWA BELLA 5128 (P)

LIMEHILLS JENNY 140009 (SBM) (P)

LIMEHILLS STAMPER 110429 (BM) (P)
 LIMEHILLS JENNY 110508 (P)

MONYMUSK CAPTAIN 070029 (BM) (P)
 LIMEHILLS LEONORA 9268 (P)
 BEECHWOOD ULTRA SOUND (P)
 LIMEHILLS JENNY 732 (P)

\$ INDEX VALUES	
Hereford Prime	+\$143
Beef Heifer	+\$135
Dairy Beef	+\$121

CALVING EASE EBVs				GROWTH & MILK EBVs				
CE DIR	CE DTRS	GEST	BWT	200	400	600	MAT	MILK
+1.9	+0.5	+0.8	+4.3	+37	+67	+98	+78	+21

FERTILITY EBVs	
SS	DTC
+0.9	-3.2

CARCASE EBVs					
CW	EMA	RIB	RUMP	RBY	IMF
+66	+4.1	+0.7	+0.3	+1.1	+1.4

Traits Observed: CE BWT 200WT 400WT 600WT SS FAT EMA IMF Genomics

Purchased in 2019 for \$34,000 at the Limehills sale, Dragon was used heavily in 2019 from which we produced Koanui Diamond R326 in 2020. Diamond is a stand-out young sire that we have retained as a herd sire and used in our 2021 AI programme. Dragon is an out-cross for our programme and has a data-set that suited us. He is just under top 10% of the breed for Hereford Prime \$ Index, top 10% of the breed for IMF% EBV and has good growth EBVs. Out of a Silver Benchmark dam and Homozygous Polled.

REFERENCE SIRE

OTENGI STREAKER 33

BORN 17/08/18

HB No. 0816180033P

LIMEHILLS STREAKER 150368
(P)

{ LIMEHILLS STARTER 131040 (BM) (P)
LIMEHILLS INA 130909 (SBM) (P)

{ LIMEHILLS STAMPER 110429 (BM) (P)
LIMEHILLS TREND 110503 (P)
WIRRUNA ECHUCA E99 (IMP AUS) (BM) (P)
LIMEHILLS INA 110473 (P)

OTENGI AMETHYST 1263 (P)

{ OTENGI FULLBACK 565 (P)
OTENGI AMETHYST 893 (P)

{ SQUARE-D FULLBACK 615C (IMP CAN) (P)
OTENGI AMETHYST P400 (P)
OKAWA COMMODORE 020076 (BM) (P)
OTENGI AMETHYST 02 0701 (P)

\$ INDEX VALUES	
Hereford Prime	+\$157
Beef Heifer	+\$126
Dairy Beef	+\$104

CALVING EASE EBVs				GROWTH & MILK EBVs				
CE DIR	CE DTRS	GEST	BWT	200	400	600	MAT	MILK
-2.7	+2.4	+0.7	+4.8	+39	+71	+103	+68	+28

FERTILITY EBVs	
SS	DTC
+2.1	-6.5

CARCASE EBVs					
CW	EMA	RIB	RUMP	RBY	IMF
+65	+3.1	+1.9	+2.5	+0.2	+1.1

Traits Observed: GL CE BWT 200WT(x2) 400WT SS DOC Genomics

Purchased as a yearling at Otengi in 2019, this bull is now a proven herd sire who's progeny have impeccable feet, constitution, and guts as the fat EBVs indicate. A quality bull who is very quiet and one who will be seen in the pedigrees at Koanui for years to come as a real asset. Streaker 33 is in the top 5% of the breed for Hereford Prime \$ index.



REFERENCE SIRE**KOANUI XCELORATOR 5088**

BORN 26/07/15 HB No. 0216155088P

**TRIARA XCELORATOR 594X
(IMP CAN) (P)**

{	TRIARA UNLEASHED 893U (P)
	BET-AN 40L NANETTE 23N (P)

{	CCR 57G STAMINA ET 199S (DLF IEF HYF) (P)
	JOYCLIFF RUBY JANE 129M (P)
	LAKEFORD 4J NETWORK 40L (P)
{	LAKEFORD SARALEE 74L (P)

KOANUI GLORY 0303 (P)

{	KOANUI SPECTRE 8365 (P)
	KOANUI GLORY 8258 (P)

{	KOANUI SPY 5054 (ET) (P)
	KOANUI BLUSH 4606 (ET) (P)
	KOANUI CLAMOR 2171 (P)
{	KOANUI GLORY 1042 (P)

\$ INDEX VALUES	
Hereford Prime	+\$144
Beef Heifer	+\$224
Dairy Beef	+\$136

CALVING EASE EBVs				GROWTH & MILK EBVs				
CE DIR	CE DTRS	GEST	BWT	200	400	600	MAT	MILK
+12.8	+6.4	+2.4	+2.2	+37	+71	+84	+53	+21

FERTILITY EBVs	
SS	DTC
+2.2	-3.7

CARCASE EBVs					
CW	EMA	RIB	RUMP	RBY	IMF
+66	+4.9	+1.4	+1.6	+0.8	+0.4

Traits Observed: GL CE BWT 200WT 400WT 600WT SS FAT EMA IMF Genomics

5088 is an important corner-stone sire at Koanui. He has impeccable feet and legs, great temperament, is well bodied and very correct. His sire was introduced as a new bloodline and his dam, a Spectre female, is from one of our best cow families. In 2019 a half share in Koanui Xcelorator was sold to Kokonga Herefords. We retained a 5088 son, Koanui X-Ray 7078, as a herd sire and he has bred very well. 5088 is in the very top of the breed for all three \$ Indexes, a Benchmark Sire and a Boehringer Ingelheim Dairy Sire.

REFERENCE SIRE**KOANUI BROADWAY 7292**

BORN 03/08/17 HB No. 0216177292P

BEECHWOOD BIG TIME (P)

{	BEECHWOOD TURK (P)
	BEECHWOOD SPOT ON 14 (P)

{	YARRAM LOTTERY X122 (IMP AUS) (BM) (J)
	BEECHWOOD BELLA 713 (P)
	LIMEHILLS CHEIFTON 05 524 (P)
{	BEECHWOOD SPOT ON 209 (P)

KOANUI LEONORA 4116 (P)

{	ROTOITI G123 (P)
	KOANUI LEONORA 0504 (P)

{	LAKE B107 (P)
	STREAMLANDS LADY GRACEFUL 740 (SBM) (P)
{	KOANUI RUSSIA 7012 (P)
	KOANUI LEONORA 6148 (P)

\$ INDEX VALUES	
Hereford Prime	+\$82
Beef Heifer	+\$73
Dairy Beef	+\$94

CALVING EASE EBVs				GROWTH & MILK EBVs				
CE DIR	CE DTRS	GEST	BWT	200	400	600	MAT	MILK
-1.5	+2.2	-0.3	+5.7	+40	+72	+101	+102	+23

FERTILITY EBVs	
SS	DTC
+1.6	-1.7

CARCASE EBVs					
CW	EMA	RIB	RUMP	RBY	IMF
+67	+3.7	+1.1	+1.4	+0.7	-0.4

Traits Observed: CE BWT 200WT 400WT(x2) 600WT SS FAT EMA IMF Genomics

Koanui Broadway 7292 has exceptional length and soundness with a high performance and maternal dam in Koanui Leonora 4116 who is a donor dam at Koanui. We have used three of Leonora's sons in the herd and are very excited about this year's matings.

REFERENCE SIRE

KOANUI LEGEND 7109

BORN 27/07/17

HB No. 0216177109P

R LEADER 6964 (IMP USA)
(BM) (P)

{ HYALITE ON TARGET 936 (P)
{ R MISS REVOLUTION 1009 (P)

{ SCHU-LAR ON TARGET 22S (P)
{ HYALITE TS LASS 310 (P)
{ MSU TCF REVOLUTION 4R (P)
{ R MISS WRANGLER 3007 (P)

KOANUI PEARL 8388 (GBM)
(P)

{ KOANUI BATON 6187 (BM) (P)
{ KOANUI PEARL 6107 (P)

{ MATARIKI BUSTLER (P)
{ KOANUI ANGEL 3171 (P)
{ KOANUI UNION 2568 (P)
{ KOANUI PEARL 2470 (ET) (P)

\$ INDEX VALUES	
Hereford Prime	+\$161
Beef Heifer	+\$257
Dairy Beef	+\$148

CALVING EASE EBVs				GROWTH & MILK EBVs				
CE DIR	CE DTRS	GEST	BWT	200	400	600	MAT	MILK
+12.2	+8.1	+0.3	+0.4	+46	+67	+97	+72	+23

FERTILITY EBVs		CARCASS EBVs					
SS	DTC	CW	EMA	RIB	RUMP	RBY	IMF
+2.8	-4.8	+70	+3.9	+2.1	+2.2	+0.2	+1.0

Traits Observed: GL CE BWT 200WT 400WT(x2) 600WT SS FAT EMA IMF Genomics

Koanui Legend 7109 is a Boehringer Ingelheim Dairy Sire, and a sire trait leader for low Birth Weight EBV and high 200-Day Growth EBV. He has an incredible array of Breedplan figures and is in the very top of the breed for every \$ Index. He has a Gold Benchmark dam and is by a Benchmark sire. 7109 has been used heavily at Koanui this year and with his data and pedigree we believe he will be a very important part of our programme. We have kept a very good 7109 son, Koanui Lector R084 from this year's two year olds this year - another cog in our breeding programme.

REFERENCE SIRE

KOANUI MIDRIB P433

BORN 08/08/18

HB No. 0216180433P

KOANUI MIDRIB 5382 (P)

{ OKAWA MARSHALL 1103 (P)
{ KOANUI CYNTHIA 1112 (P)

{ OKAWA DAVIS 7046 (BM) (P)
{ OKAWA AMETHYST 8155 (P)
{ KOANUI GOULBURN 8114 (P)
{ KOANUI CYNTHIA 5645 (P)

KOANUI AMETHYST 8358 (P)

{ KOANUI BATON 6187 (BM) (P)
{ KOANUI AMETHYST 6077 (P)

{ MATARIKI BUSTLER (P)
{ KOANUI ANGEL 3171 (P)
{ KOANUI UNANIMOUS 3152 (BM) (P)
{ KOANUI AMETHYST V0558 (P)

\$ INDEX VALUES	
Hereford Prime	+\$107
Beef Heifer	+\$199
Dairy Beef	+\$134

CALVING EASE EBVs				GROWTH & MILK EBVs				
CE DIR	CE DTRS	GEST	BWT	200	400	600	MAT	MILK
+12.1	+8.0	-4.0	+1.1	+33	+59	+85	+73	+18

FERTILITY EBVs		CARCASS EBVs					
SS	DTC	CW	EMA	RIB	RUMP	RBY	IMF
+3.3	-1.4	+61	+1.3	+0.7	+0.8	-0.3	+0.7

Traits Observed: CE BWT 200WT 400WT(x2) 600WT SS FAT EMA IMF Genomics

Koanui Midrib P433 is a young herd sire with tremendous depth, rib and he is very dark with strong eye pigment. P433 is a Sire Trait Leader for Birth Weight EBV and has the ideal pedigree for birth and calving ease. With an excellent data set, he is in the top 10% and 5% of the breed respectively for Beef Heifer and Dairy Beef \$ Indexes. His dam, Koanui Amethyst 8358 lasted in the herd until 13 years of age and was still as sound as a bell. Midrib P433 is a very functional young sire with growth.

Homozygous Polled.

REFERENCE SIRE

KOANUI MAJOR P469

BORN 13/08/18

HB No. 0216180469P

MAHUTA MAJOR 6018 (P)

{ LIMEHILLS STARTER 131078 (BM) (P)
MAHUTA AMETHYST 4036 (P)

{ LIMEHILLS STAMPER 110429 (BM) (P)
LIMEHILLS 110562 (P)
KOANUI SPY 8371 (P)
MAHUTA AMETHYST 8001 (P)

KOANUI SPIRIT QUEEN 6219 (P)

{ KOANUI BUSTLER 2541 (P)
KOANUI SPIRIT QUEEN 2308 (P)

{ KOANUI BUSTLER 8132 (P)
KOANUI CYNTHIA 5508 (BM) (P)
KOANUI SPECTRE 8365 (P)
KOANUI SPIRIT QUEEN 9152 (P)

\$ INDEX VALUES	
Hereford Prime	+\$173
Beef Heifer	+\$223
Dairy Beef	+\$137

CALVING EASE EBVs				GROWTH & MILK EBVs				
CE DIR	CE DTRS	GEST	BWT	200	400	600	MAT	MILK
+10.8	+3.8	+0.5	-0.3	+32	+68	+89	+63	+13

FERTILITY EBVs	
SS	DTC
+3.2	-5.4

CARCASE EBVs					
CW	EMA	RIB	RUMP	RBY	IMF
+67	+2.2	+1.7	+2.3	-0.1	+0.8

Traits Observed: CE BWT 200WT 400WT(x2) 600WT SS FAT EMA IMF Genomics

Koanui Major P469 is undoubtedly the front pasture show off with loads of style, presence and balance but also very quiet. P469 has a very impressive data set and for a bull with such low birth and calving ease, he still has the 600-day Growth that we need. A sire trait leader for low birth weight and high scrotal size EBVs, P469 is in the top 1% of the breed for Hereford Prime and Beef Heifer \$ Indexes and the top 5% for Dairy Beef \$ Index. His dam, Koanui Spirit Queen 6219, is a beautiful cow with style and volume. Koanui Major P469 is already a very important part of our herd sire battery plus we have used four sons in our 2021 mating programme. He is a Beef + Lamb Beef Sire and Dairy Sire, selected for both Beef + Lamb Progeny Test programmes. You will no doubt hear a lot about Major P469 in the future.



bidr[®] is here.

Trade Livestock Like Never Before

Buy and Sell livestock on bidr[®] in **3 easy steps:**

1

Sign up at www.bidr.co.nz
and add your agency account
under account details

2

Browse auctions
to find livestock you are
interested in buying

3

Login and register for the
real time online auction to
bid for the livestock you
wish to purchase



Real time auctions, bid on livestock from
anywhere.



All livestock listed by livestock agents and
assessed by accredited assessors.



Nationwide Reach. Bringing more buyers
and sellers together, Virtually.



Buy livestock straight from farm resulting in
less stress on animals and positive
environmental benefits.



Full livestock assessment information for buyers
and nationwide reach for sellers.

bidr[®]

Contact your bidr[®]
Representative to sign up
at bidr.co.nz

0800 TO BIDR



fb.com/bidrnz
instagram.com/bidrnz

LOT 1

KOANUI STREAKER R074

BORN 20/07/20 HB No. 0216200074P

OTENGI STREAKER 33 (P)

- LIMEHILLS STREAKER 150368 (P)
- OTENGI AMETHYST 1263 (P)

- LIMEHILLS STARTER 131040 (BM) (P)
- LIMEHILLS INA 130909 (SBM) (P)
- OTENGI FULLBACK 565 (P)
- OTENGI AMETHYST 893 (P)

KOANUI AMETHYST 4593 (P)

- KAIRURU INDIA 110045 (P)
- KOANUI AMETHYST 7040 (P)

- NITHDALE ELVIS 040021 (P)
- KAIRURU LEONORA 050059 (P)
- KOANUI UNANIMOUS 3152 (BM) (P)
- KOANUI AMETHYST 2432 (P)

\$ INDEX VALUES	
Hereford Prime	+\$142
Beef Heifer	+\$83
Dairy Beef	+\$98

CALVING EASE EBVs				GROWTH & MILK EBVs				
CE DIR	CE DTRS	GEST	BWT	200	400	600	MAT	MILK
-8.1	-1.9	-1.2	+6.7	+46	+90	+127	+109	+30

FERTILITY EBVs	
SS	DTC
+3.6	-5.2

CARCASE EBVs					
CW	EMA	RIB	RUMP	RYB	IMF
+83	+5.5	+1.0	+1.2	+1.3	+1.0

Traits Observed: GL CE BWT 200WT 400WT(x2) 600WT(x2) SS FAT EMA IMF Genomics

This is one of the most impressive bulls we have produced at Koanui. He has quality, performance and capacity with natural doing ability. R074 has stood out from birth with a very quiet disposition and a very strong maternal background. Koanui Streaker R074 is in the top 10% of the breed for Hereford Prime \$ Index. Homozygous Polled.



Purchaser:..... Price: \$.....

LOT 2

KOANUI BROADWAY R072

BORN 20/07/20 HB No. 0216200072P

KOANUI BROADWAY 7292 (P)

- BEECHWOOD BIG TIME (P)
- KOANUI LEONORA 4116 (P)

- BEECHWOOD TURK (P)
- BEECHWOOD SPOT ON 14 (P)
- ROTOITI G123 (P)
- KOANUI LEONORA 0504 (P)

KOANUI LOTTIE 2389 (P)

- KOANUI CHEROKEE 9075 (BM) (P)
- KOANUI LOTTIE 9135 (P)

- LIMEHILLS CHIEFTON 680 (P)
- KOANUI CYNTHIA U274 (GBM) (P)
- KAIRURU DUKE 060008 (P)
- KOANUI LOTTIE U125 (GBM) (P)

\$ INDEX VALUES	
Hereford Prime	+\$133
Beef Heifer	+\$103
Dairy Beef	+\$104

CALVING EASE EBVs				GROWTH & MILK EBVs				
CE DIR	CE DTRS	GEST	BWT	200	400	600	MAT	MILK
-2.2	-0.2	+2.1	+6.8	+40	+70	+107	+95	+21

FERTILITY EBVs	
SS	DTC
+4.2	-3.9

CARCASE EBVs					
CW	EMA	RIB	RUMP	RYB	IMF
+66	+5.3	+1.4	+1.9	+0.9	+0.8

Traits Observed: CE BWT 200WT 400WT(x2) 600WT(x2) SS FAT EMA IMF Genomics

Broadway R072 is a real eye-catcher with ideal structure, very good top and an ideal back end. He ticks a lot of boxes with performance and carcass. His dam, Lottie 2389, is a very good cow and her sire, Cherokee 9075, has produced some of the best females at Koanui. Two Gold Benchmark Dams in this pedigree. Homozygous Polled.



Purchaser:..... Price: \$.....

LOT 3

KOANUI XCELERATOR R249

BORN 29/07/20 HB No. 0216200249P

KOANUI XCELERATOR 5088 (BM)
(P)

TRIARA XCELERATOR 594X (IMP)
CAN (P)
KOANUI GLORY 0303 (P)

TRIARA UNLEASHED 893U (P)
BET-AN 40L NANETTE 23N (P)
KOANUI SPECTRE 8365 (P)
KOANUI GLORY 8258 (P)

KOANUI LYDIA 6460 (P)

KOANUI CHEROKEE 3407 (P)
KOANUI LYDIA 2340 (P)

KOANUI CHEROKEE 9075 (BM) (P)
KOANUI BLUSH 0276 (SBM) (P)
KOANUI SPECTRE 8365 (P)
KOANUI LYDIA 9026 (P)

\$ INDEX VALUES	
Hereford Prime	+\$149
Beef Heifer	+\$164
Dairy Beef	+\$122

CALVING EASE EBVs				GROWTH & MILK EBVs				
CE DIR	CE DTRS	GEST	BWT	200	400	600	MAT	MILK
+4.1	+1.3	+4.9	+5.5	+46	+81	+113	+86	+23

FERTILITY EBVs	
SS	DTC
+2.6	-3.1

CARCASS EBVs					
CW	EMA	RIB	RUMP	RBV	IMF
+75	+3.9	+0.4	+0.2	+1.3	+0.1

Traits Observed: GL CE BWT 200WT 400WT(x2) 600WT(x2) SS FAT EMA IMF Genomics

The first thing that stands out about Koanui Xcelerator R249 is the sire, Xcelerator 5088, a Benchmark Sire who has done a tremendous job for us - breeding with such consistency and safety, impeccable feet, good constitution and meat. The Dam line with Spectre and Cherokee couldn't be stronger. All this breeding in a very good bull makes an exciting future herd sire in R249. Very high in all the \$ Indexes, in the top 10% of the breed for Hereford Prime \$ Index. Homozygous Polled



Purchaser:..... Price: \$.....

LOT 4

KOANUI XCELERATOR R181

BORN 26/07/20 HB No. 0216200181P

KOANUI XCELERATOR 5088 (BM)
(P)

TRIARA XCELERATOR 594X (IMP)
CAN (P)
KOANUI GLORY 0303 (P)

TRIARA UNLEASHED 893U (P)
BET-AN 40L NANETTE 23N (P)
KOANUI SPECTRE 8365 (P)
KOANUI GLORY 8258 (P)

KOANUI LEONORA 6351 (P)

KOANUI MARSHALL 4164 (P)
KOANUI LEONORA 3162 (P)

OKAWA MARSHALL 1103 (P)
KOANUI IRANE 4085 (P)
KOANUI DISPLAY 0603 (P)
KOANUI LEONORA 7104 (P)

\$ INDEX VALUES	
Hereford Prime	+\$137
Beef Heifer	+\$202
Dairy Beef	+\$128

CALVING EASE EBVs				GROWTH & MILK EBVs				
CE DIR	CE DTRS	GEST	BWT	200	400	600	MAT	MILK
+11.4	+5.9	+2.9	+1.2	+34	+60	+76	+48	+19

FERTILITY EBVs	
SS	DTC
+2.7	-4.5

CARCASE EBVs					
CW	EMA	RIB	RUMP	RYB	IMF
+55	+3.0	+1.0	+1.3	+0.3	+0.4

Traits Observed: GL CE BWT 200WT 400WT(x2) 600WT(x2) SS FAT EMA IMF Genomics

Another Xcelerator 5088 son, R181 is a complete bull with great depth, cosmetics and an amazing set of numbers for a bull that also has the physical performance. Not to be missed and a sure bet with this pedigree. Dam and Grand-dam are still in the herd and both are due to calve in the first week of calving. Very high for every \$ Index but remarkably in the top 5% of the breed for Beef Heifer \$ Index and top 10% for Dairy Beef \$ Index. Homozygous Polled.



Purchaser:..... Price: \$.....

LOT 5

KOANUI DRAGON R264

BORN 31/07/20 HB No. 0216200264P

LIMEHILLS DRAGON 170393 (P)

- OKAWA ELECTRA 1117 (P)
- LIMEHILLS JENNY 140009 (SBM) (P)

- LIMEHILLS ELECTRA 07 888 (P)
- OKAWA BELLA 7022 (SBM) (P)
- LIMEHILLS STAMPER 110429 (BM) (P)
- LIMEHILLS JENNY 110508 (P)

KOANUI GLORY 4376 (SBM) (P)

- KOANUI UNANIMOUS 0408 (BM) (P)
- KOANUI GLORY 0212 (P)

- KOANUI UNANIMOUS 7174 (P)
- KOANUI GIRLIE 3048 (SBM) (P)
- KOANUI RUSSIA 7012 (P)
- KOANUI GLORY 2170 (P)

\$ INDEX VALUES	
Hereford Prime	+\$114
Beef Heifer	+\$138
Dairy Beef	+\$113

CALVING EASE EBVs				GROWTH & MILK EBVs				
CE DIR	CE DTRS	GEST	BWT	200	400	600	MAT	MILK
+5.1	+4.4	+1.7	+3.3	+33	+59	+83	+69	+20

FERTILITY EBVs	
SS	DTC
-0.5	-2.3

CARCASE EBVs					
CW	EMA	RIB	RUMP	RYB	IMF
+60	+3.7	+0.8	+0.3	+1.7	+0.0

Traits Observed: CE BWT 200WT 400WT(x2) 600WT(x2) SS FAT EMA IMF Genomics

The first of the Dragon sons to be offered. We have retained an exceptional son of Dragon as a herd sire and have catalogued a number of very good sons in this sale. R264 is a very easy doing bull with depth, length and good cosmetics. The Dam, Koanui Glory 4376, is a top cow and a Silver Benchmark Dam. Her Sire, Nano, is an outstanding breeding bull with some of the best figures in the breed. Lots of Benchmark animals in this pedigree. Homozygous Polled.



Purchaser:..... Price: \$.....

LOT 6**KOANUI KINSIT R256**

BORN 30/07/20 HB No. 0216200256P

MATARIKI KINSIT (P)

MATARIKI 110637 (P)

MATARIKI VICTORIA 120223 (P)

MATARIKI JAULIN 080665 (S)

MATARIKI VICTORIA 070351 (P)

MATARIKI HERMAN 070400 (P)

MATARIKI VICTORIA 080691 (P)

KOANUI BLUSH 7553 (P)

KOANUI PLATINUM 5327 (P)

KOANUI BLUSH 5034 (P)

MAUNGAHINA PLATINUM120173 (P)

KOANUI AMETHYST 1023 (GBM) (P)

KOANUI K2 3393 (P)

KOANUI BLUSH 3172 (SBM) (P)

\$ INDEX VALUES	
Hereford Prime	+\$148
Beef Heifer	+\$152
Dairy Beef	+\$115

CALVING EASE EBVs				GROWTH & MILK EBVs				
CE DIR	CE DTRS	GEST	BWT	200	400	600	MAT	MILK
+2.5	+2.5	+0.9	+3.9	+38	+69	+100	+86	+19

FERTILITY EBVs	
SS	DTC
+3.7	-4.1

CARCASE EBVs					
CW	EMA	RIB	RUMP	RBY	IMF
+69	+5.3	+1.1	+1.1	+1.7	+0.2

Traits Observed: CE BWT 200WT 400WT(x2) 600WT(x2) SS FAT EMA IMF Genomics

Koanui Kinsit R256 is a bull with real meat and barrel. His sire has performed very well in the herd, breeding very functional cattle to a definite type with very good soundness. The data set ticks all the boxes and he is a bull that is ideal for hard hill country. Note the Silver and Gold Benchmark Grand-dams. R256 is in the top 10% of the breed for Hereford Prime \$ Index. Homozygous Polled.



Purchaser:..... Price: \$.....

LOT 7

KOANUI X-RAY R117

BORN 24/07/20 HB No. 0216200117P

KOANUI X-RAY 7078 (P)

- KOANUI XCELORATOR 5088 (BM)
- { (P)
- { KOANUI BLUSH 0291 (P)

- { TRIARA XCELORATOR 594X (IMP CAN) (P)
- { KOANUI GLORY 0303 (P)
- { KOANUI BOULDER 7050 (ET) (P)
- { KOANUI BLUSH 2195 (SBM) (P)

KOANUI PEARL 4381 (P)

- KOANUI ULTIMATE 2071 (P)
- { KOANUI PEARL 2168 (P)

- { KOANUI ULTIMATE 8086 (BM) (P)
- { KOANUI LYDIA 6019 (P)
- { NITHDALE INTREPID 080041 (P)
- { KOANUI PEARL 7170 (P)

\$ INDEX VALUES	
Hereford Prime	+ \$120
Beef Heifer	+ \$146
Dairy Beef	+ \$116

CALVING EASE EBVs				GROWTH & MILK EBVs				
CE DIR	CE DTRS	GEST	BWT	200	400	600	MAT	MILK
+2.4	+4.0	-0.6	+6.0	+50	+80	+112	+89	+31

FERTILITY EBVs	
SS	DTC
+2.2	-3.4

CARCASS EBVs					
CW	EMA	RIB	RUMP	RBY	IMF
+75	+3.0	+1.0	+1.2	+0.3	+0.2

Traits Observed: CE BWT 200WT 400WT(x2) 600WT(x2) SS FAT EMA IMF Genomics

X-Ray R117 is a bull to add growth and performance. He is in the top 5% of the breed for all the Growth EBV's and Carcass Weight EBV. The figures are a good reflection of how he should breed. His dam, Koanui Pearl 4381, is a very nice female with smoothness and capacity. R117 has plenty of length and stretch with a clean front. Homozygous Polled.



Purchaser:..... Price: \$.....

LOT 8

KOANUI TECHNO R154

BORN 25/07/20 HB No. 0216200154P

KOANUI TECHNO 6179 (P)

- KOANUI TECHNO 3062 (BM) (P)
- KOANUI ANGEL 2392 (P)

- KOANUI UNANIMOUS 0408 (BM) (P)
- KOANUI BLUSH 6455 (P)
- KOANUI SPECTRE 8365 (P)
- KOANUI ANGEL 9249 (P)

KOANUI ANGEL 4071 (P)

- KOANUI BRITON 2044 (P)
- KOANUI ANGEL 1473 (P)

- KOANUI BUSTLER 8132 (P)
- KOANUI LYDIA 5576 (BM) (P)
- KOANUI BELTER 8406 (P)
- KOANUI ANGEL 5466 (P)

\$ INDEX VALUES	
Hereford Prime	+\$128
Beef Heifer	+\$101
Dairy Beef	+\$108

CALVING EASE EBVs				GROWTH & MILK EBVs				
CE DIR	CE DTRS	GEST	BWT	200	400	600	MAT	MILK
-0.1	+0.4	+0.8	+4.9	+42	+76	+103	+85	+15

FERTILITY EBVs	
SS	DTC
+1.2	-1.5

CARCASS EBVs					
CW	EMA	RIB	RUMP	RYB	IMF
+69	+2.2	+1.2	+1.3	-0.3	+0.8

Traits Observed: GL CE BWT 200WT 400WT(x2) 600WT(x2) SS FAT EMA IMF Genomics

Clean and smooth up front with a good body and excellent growth performance. This mix of sire and dam has brought out the best of both. The sire was the top price of \$51,000 in our 2019 sale, he was mated to a female with a lot of body and capacity and it has really worked. Homozygous Polled.



Purchaser:..... Price: \$.....

LOT 9

KOANUI GALLANT R268

BORN 31/07/20 HB No. 0216200268P

GRASSMERE GALLANT 152 (P)

- MONYMUSK GALLANT 110089 (P)
- GRASSMERE PRINCESS 826 (P)

- MATARIKI DUNSTAN (P)
- MONYMUSK DOROTHY 070083 (SBM) (P)
- OKAWA PANDA 9225 (P)
- GRASSMERE PRINCESS 706 (P)

KOANUI GIRLIE 7393 (BM) (P)

- KOANUI XCELORATOR 5088 (BM) (P)
- KOANUI GIRLE 4385 (P)

- TRIARA XCELORATOR 594X (IMP CAN) (P)
- KOANUI GLORY 0303 (P)
- KOANUI CHEROKEE 2285 (P)
- KOANUI GIRLIE 2511 (SBM) (P)

\$ INDEX VALUES	
Hereford Prime	+ \$124
Beef Heifer	+ \$161
Dairy Beef	+ \$119

CALVING EASE EBVs				GROWTH & MILK EBVs				
CE DIR	CE DTRS	GEST	BWT	200	400	600	MAT	MILK
+7.6	+6.5	+0.4	+2.1	+30	+56	+69	+38	+21

FERTILITY EBVs	
SS	DTC
+2.0	-2.3

CARCASS EBVs					
CW	EMA	RIB	RUMP	RBY	IMF
+51	+4.6	+1.9	+2.3	+0.5	+0.8

Traits Observed: CE BWT 200WT 400WT(x2) 600WT(x2) SS FAT EMA IMF Genomics

A quality bull with a lot of meat and an ideal pedigree for hard country. Excellent calving ease and carcass figures. The blend of Xcelorator and Gallant put together two of the safest bulls in the breed. The dam, Koanui Girlie 7393, is a Benchmark Dam. Homozygous Polled.



Purchaser:..... Price: \$.....

LOT 10

KOANUI DRAGON R457

BORN 07/08/20 HB No. 0216200457P

LIMEHILLS DRAGON 170393 (P)

- OKAWA ELECTRA 1117 (P)
- LIMEHILLS JENNY 140009 (SBM) (P)

- LIMEHILLS ELECTRA 07 888 (P)
- OKAWA BELLA 7022 (SBM) (P)
- LIMEHILLS STAMPER 110429 (BM) (P)
- LIMEHILLS JENNY 110508 (P)

KOANUI LYDIA 4370 (P)

- KOANUI ROGER 1581 (P)
- KOANUI LYDIA 2017 (P)

- KOANUI RUSSIA 7012 (P)
- KOANUI DAINTY 2453 (PBM) (ET) (P)
- OKAWA BARITONE 9027 (P)
- KOANUI LYDIA 0453 (P)

\$ INDEX VALUES	
Hereford Prime	+\$117
Beef Heifer	+\$122
Dairy Beef	+\$116

CALVING EASE EBVs				GROWTH & MILK EBVs				
CE DIR	CE DTRS	GEST	BWT	200	400	600	MAT	MILK
+4.5	+2.0	+1.7	+2.9	+33	+57	+80	+57	+21

FERTILITY EBVs	
SS	DTC
+1.3	-2.0

CARCASE EBVs					
CW	EMA	RIB	RUMP	RBY	IMF
+56	+2.9	+0.7	+0.5	+0.6	+1.1

Traits Observed: CE BWT 200WT 400WT(x2) 600WT(x2) SS FAT EMA IMF Genomics

Another bull with the sort of balance of figures we like. The dam, Koanui Lydia 4370, is a very good cow. Her sire, Koanui Roger 1581, out of a Platinum Benchmark Dam, left real quality in his females. You can't miss using a bull from this dam! Heterozygous Polled.



Purchaser:..... Price: \$.....

LOT 11

KOANUI GET START R426

BORN 06/08/20 HB No. 0216200426P

BEECHWOOD GET STARTED 21 (P)

- { OKAWA GOING 3011 (P)
- { BEECHWOOD SPOT ON 239 (P)

- { OKAWA MARSHALL 1103 (P)
- { OKAWA LYDIA 1061 (P)
- { BEECHWOOD TURK (P)
- { BEECHWOOD SPOT ON 18 (P)

KOANUI CYNTHIA 4457 (P)

- { KOANUI RISER 1180 (P)
- { KOANUI CYNTHIA 8472 (P)

- { KOANUI RUSSIA 7012 (P)
- { KOANUI ROSE 5407 (SBM) (P)
- { KOANUI SATURN 4119 (P)
- { KOANUI CYNTHIA 3019 (ET) (P)

\$ INDEX VALUES	
Hereford Prime	+\$55
Beef Heifer	+\$34
Dairy Beef	+\$86

CALVING EASE EBVs				GROWTH & MILK EBVs				
CE DIR	CE DTRS	GEST	BWT	200	400	600	MAT	MILK
-1.8	+2.2	-1.8	+2.4	+31	+48	+72	+80	+23

FERTILITY EBVs	
SS	DTC
+2.4	-2.8

CARCASE EBVs					
CW	EMA	RIB	RUMP	RBV	IMF
+51	+2.1	+0.2	-0.2	+0.5	+0.2

Traits Observed: CE BWT 200WT 400WT(x2) 600WT(x2) SS FAT EMA IMF Genomics

This bull has definitely thrown towards his dam who is a very consistent breeder. R426 has nice cosmetics and impeccable feet, two of his sire's real strengths. Heterozygous Polled.



Purchaser:..... Price: \$.....

LOT 12

KOANUI LEGEND R640

BORN 25/08/20 HB No. 0216200640P

KOANUI LEGEND 7109 (P)

{ R LEADER 6964 (IMP USA) (BM) (P)
 { KOANUI PEARL 8388 (GBM) (P)

{ HYALITE ON TARGET 936 (P)
 { R MISS REVOLUTION 1009 (P)
 { KOANUI BATON 6187 (BM) (P)
 { KOANUI PEARL 6107 (P)

KOANUI CYNTHIA 0577 (P)

{ KOANUI SPY 8371 (P)
 { KOANUI CYNTHIA 8155 (P)

{ KOANUI SPY 5054 (ET) (P)
 { KOANUI DAINY 4567 (P)
 { OKAWA ADMIRAL 5021 (BM) (P)
 { KOANUI CYNTHIA 3439 (S)

WITHDRAWN

\$ INDEX VALUES	
Hereford Prime	+\$164
Beef Heifer	+\$247
Dairy Beef	+\$147

CALVING EASE EBVs				GROWTH & MILK EBVs				
CE DIR	CE DTRS	GEST	BWT	200	400	600	MAT	MILK
+11.9	+4.9	+2.0	+1.1	+46	+75	+109	+88	+19

FERTILITY EBVs	
SS	DTC
+2.1	-4.0

CARCASE EBVs					
CW	EMA	RIB	RUMP	RBY	IMF
+82	+3.4	+0.8	+0.6	+1.2	+0.3

Traits Observed: CE BWT 200WT 400WT(x2) 600WT(x2) SS FAT EMA IMF Genomics

Koanui Legend R640 is a Boehringer Ingelheim Dairy Sire. A top bull with a very good body and optimal figures in nearly all traits. Dam is a very good and consistent breeder with very reliable birth. She is going strong having had 10 calves so far. He has some of the highest \$ Indexes in the breed, in the top 5% for Hereford Prime \$ Index and top 1% for both Beef Heifer and Dairy \$ Indexes. Homozygous Polled.



Purchaser:..... Price: \$.....

LOT 13

KOANUI MAJOR R030

BORN 17/07/20 HB No. 0216200030P

KOANUI MAJOR P469 (P)

- MAHUTA MAJOR 6018 (P)
- KOANUI SPIRIT QUEEN 6219 (P)

- LIMEHILLS STARTER 131078 (BM) (P)
- MAHUTA AMETHYST 4036 (P)
- KOANUI BUSTLER 2541 (P)
- KOANUI SPIRIT QUEEN 2308 (P)

KOANUI DAINTY 5012 (P)

- OKAWA MARSHALL 1103 (P)
- KOANUI DAINTY 4242 (P)

- OKAWA DAVIS 7046 (BM) (P)
- OKAWA AMETHYST 8155 (P)
- KOANUI KOOTENAY 2077 (S)
- KOANUI DAINTY 2448 (ET) (P)

\$ INDEX VALUES	
Hereford Prime	+\$137
Beef Heifer	+\$177
Dairy Beef	+\$126

CALVING EASE EBVs				GROWTH & MILK EBVs				
CE DIR	CE DTRS	GEST	BWT	200	400	600	MAT	MILK
+9.2	+3.7	-1.4	+0.7	+27	+60	+78	+62	+13

FERTILITY EBVs	
SS	DTC
+2.3	-3.3

CARCASS EBVs					
CW	EMA	RIB	RUMP	RBY	IMF
+58	+3.3	+1.2	+1.4	+0.5	+0.7

Traits Observed: GL CE BWT 200WT 400WT 600WT

Used as a yearling, Major R030 is the ideal heifer mating bull. He is built for calving ease in phenotype and data with impeccable feet and structure. A very good pedigree of safe performance for heifer mating. Very high \$ indexes across the board and in the top 10% of the breed for Dairy Beef \$ Index. Genomic test results pending.



Purchaser:..... Price: \$.....

LOT 14

KOANUI MARVEL R049

BORN 19/07/20 HB No. 0216200049P

KOANUI MAJOR P469 (P)

- MAHUTA MAJOR 6018 (P)
- KOANUI SPIRIT QUEEN 6219 (P)

- LIMEHILLS STARTER 131078 (BM) (P)
- MAHUTA AMETHYST 4036 (P)
- KOANUI BUSTLER 2541 (P)
- KOANUI SPIRIT QUEEN 2308 (P)

KOANUI CYNTHIA 1112 (P)

- KOANUI GOULBURN 8114 (P)
- KOANUI CYNTHIA 5645 (P)

- WIRANYA GOULBURN (IMP AUS) (P)
- KOANUI AMETHYST 2432 (P)
- KOANUI UNANIMOUS 3152 (BM) (P)
- KOANUI CYNTHIA 2365 (P)

\$ INDEX VALUES	
Hereford Prime	+ \$141
Beef Heifer	+ \$207
Dairy Beef	+ \$131

CALVING EASE EBVs				GROWTH & MILK EBVs				
CE DIR	CE DTRS	GEST	BWT	200	400	600	MAT	MILK
+10.8	+5.3	-1.4	-0.1	+35	+64	+91	+71	+16

FERTILITY EBVs	
SS	DTC
+3.5	-3.8

CARCASE EBVs					
CW	EMA	RIB	RUMP	RBY	IMF
+67	+1.4	+0.8	+0.9	+0.3	+0.0

Traits Observed: GL CE BWT 200WT 400WT(x2) 600WT SS FAT EMA IMF Genomics

Used as a yearling, Marvel R049 is a Boehringer Ingelheim Dairy Sire. Very high \$ Indexes across the board and in the top 10% of the breed for Beef Heifer and Dairy Beef Indexes. The dam, Koanui Cynthia 1112, is in the top four females in the herd and a donor dam at Koanui. She is as good a beef cow as you could find, deep, easy doing and a top breeder. Marvel is a standout with a great body like his dam and an impressive birth to 600-Day Growth ratio. He is a curve bender! Homozygous Polled. Koanui to retain semen for within-herd use.



Purchaser: Price: \$

LOT 15

KOANUI BROADWAY R270

BORN 31/07/20 HB No. 0216200270P

KOANUI BROADWAY 7292 (P)

- { BEECHWOOD BIG TIME (P)
- { KOANUI LEONORA 4116 (P)

- { BEECHWOOD TURK (P)
- { BEECHWOOD SPOT ON 14 (P)
- { ROTOITI G123 (P)
- { KOANUI LEONORA 0504 (P)

KOANUI ROSE 4038 (P)

- { KOANUI BEDFORD 1339 (P)
- { KOANUI ROSE 8279 (P)

- { LIMEHILLS BEDFORD 07 902 (P)
- { KOANUI LYDIA 0059 (SBM) (P)
- { KOANUI DISPLAY 5588 (ET) (P)
- { KOANUI ROSE 5564 (SBM) (P)

\$ INDEX VALUES	
Hereford Prime	+\$117
Beef Heifer	+\$106
Dairy Beef	+\$108

CALVING EASE EBVs				GROWTH & MILK EBVs				
CE DIR	CE DTRS	GEST	BWT	200	400	600	MAT	MILK
-0.6	+1.6	-1.2	+7.2	+45	+74	+111	+107	+17

FERTILITY EBVs	
SS	DTC
+0.9	-1.7

CARCASE EBVs					
CW	EMA	RIB	RUMP	RBV	IMF
+70	+3.7	+1.0	+1.3	+0.3	+0.6

Traits Observed: CE BWT 200WT 400WT(x2) 600WT(x2) SS FAT EMA IMF Genomics

A real cracker performance bull in the top 5% of the breed for the growth trait EBV's and carcass weight. Loads of performance and body. Well structured and will handle hard country. Dam has depth, softness and femininity, a top cow with two Silver Benchmark Grand Dams. Homozygous Polled.



Purchaser:..... Price: \$.....

LOT 16

KOANUI KINSIT R404

BORN 05/08/20 HB No. 0216200404P

MATARIKI KINSIT (P)

- MATARIKI 110637 (P)
- MATARIKI VICTORIA 120223 (P)

- MATARIKI JAULIN 080665 (S)
- MATARIKI VICTORIA 070351 (P)
- MATARIKI HERMAN 070400 (P)
- MATARIKI VICTORIA 080691 (P)

KOANUI GIRLIE 7342 (P)

- MAUNGAHINA PLATINUM120173 (P)
- KOANUI GIRLIE 2521 (P)

- KOANUI SAFETY 8557 (P)
- MAUNGAHINA AMETHYST 060021 (P)
- KOANUI GOULBURN 8114 (P)
- KOANUI GIRLIE 8178 (P)

\$ INDEX VALUES	
Hereford Prime	+\$98
Beef Heifer	+\$114
Dairy Beef	+\$105

CALVING EASE EBVs				GROWTH & MILK EBVs				
CE DIR	CE DTRS	GEST	BWT	200	400	600	MAT	MILK
+3.1	+3.0	-0.9	+4.0	+32	+60	+92	+91	+20

FERTILITY EBVs	
SS	DTC
+2.7	-2.6

CARCASE EBVs					
CW	EMA	RIB	RUMP	RBY	IMF
+59	+3.0	+0.7	+0.5	+1.1	-0.4

Traits Observed: CE BWT 200WT 400WT(x2) 600WT(x2) SS FAT EMA IMF Genomics

One of the feature lots in this sale. A very correct and attractive bull that is a standout with balance in phenotype and figures. Sire, Matariki Kinsit, has done a good job breeding a consistent type and still going strong. Sire and dam have made the ideal blend. The grand-dam is a very impressive cow and the dam is proving herself. Heterozygous Polled.



LOT 17

KOANUI DRAGON R517

BORN 10/08/20 HB No. 0216200517P

LIMEHILLS DRAGON 170393 (P)

- OKAWA ELECTRA 1117 (P)
- LIMEHILLS JENNY 140009 (SBM) (P)

- LIMEHILLS ELECTRA 07 888 (P)
- OKAWA BELLA 7022 (SBM) (P)
- LIMEHILLS STAMPER 110429 (BM) (P)
- LIMEHILLS JENNY 110508 (P)

KOANUI CYNTHIA 3257 (P)

- KOANUI MANSION 0246 (P)
- KOANUI CYNTHIA 8472 (P)

- WYBORN MANSION 0814 (P)
- KOANUI DIANA 7334 (P)
- KOANUI SATURN 4119 (P)
- KOANUI CYNTHIA 3019 (ET) (P)

\$ INDEX VALUES	
Hereford Prime	+\$100
Beef Heifer	+\$85
Dairy Beef	+\$101

CALVING EASE EBVs				GROWTH & MILK EBVs				
CE DIR	CE DTRS	GEST	BWT	200	400	600	MAT	MILK
+0.7	+1.6	+1.9	+4.8	+33	+59	+83	+79	+17

FERTILITY EBVs	
SS	DTC
+2.0	-2.5

CARCASS EBVs					
CW	EMA	RIB	RUMP	RYB	IMF
+53	+3.1	+0.7	+0.5	+0.6	+0.7

Traits Observed: CE BWT 200WT 400WT(x2) 600WT(x2) SS FAT EMA IMF

A very stylish bull with a nice front and a different pedigree that will offer something new. The bulk of sire, Dragon, over some stylish females has really worked well. R517 has a lot of potential and will be very interesting by sale time. Genomic test results pending.



Purchaser:..... Price: \$.....

LOT 18

KOANUI DRAGON R538

BORN 12/08/20 HB No. 0216200538P

LIMEHILLS DRAGON 170393 (P)

- { OKAWA ELECTRA 1117 (P)
- { LIMEHILLS JENNY 140009 (SBM) (P)

- { LIMEHILLS ELECTRA 07 888 (P)
- { OKAWA BELLA 7022 (SBM) (P)
- { LIMEHILLS STAMPER 110429 (BM) (P)
- { LIMEHILLS JENNY 110508 (P)

KOANUI GIRLIE 5463 (P)

- { KOANUI BUSTLER 2541 (P)
- { KOANUI GIRLIE 0310 (P)

- { KOANUI BUSTLER 8132 (P)
- { KOANUI CYNTHIA 5508 (BM) (P)
- { LIMEHILLS BEDFORD 07 902 (P)
- { KOANUI GIRLIE 8610 (P)

\$ INDEX VALUES	
Hereford Prime	+ \$128
Beef Heifer	+ \$105
Dairy Beef	+ \$108

CALVING EASE EBVs				GROWTH & MILK EBVs				
CE DIR	CE DTRS	GEST	BWT	200	400	600	MAT	MILK
-0.2	+1.8	+0.4	+3.9	+34	+64	+88	+69	+21

FERTILITY EBVs	
SS	DTC
+2.3	-3.5

CARCASS EBVs					
CW	EMA	RIB	RUMP	RBY	IMF
+57	+3.7	+1.2	+1.2	+0.3	+1.4

Traits Observed: CE BWT 200WT 400WT(x2) 600WT(x2) SS FAT EMA IMF Genomics

Very similar to the previous lot but with exceptional IMF%. R538 is in the top 10% of the breed for IMF% EBV. Heterozygous Polled.



Purchaser: Price: \$

LOT 19

KOANUI GALLANT R564

BORN 14/08/20 HB No. 0216200564P

GRASSMERE GALLANT 152 (P)

- MONYMUSK GALLANT 110089 (P)
- GRASSMERE PRINCESS 826 (P)

- MATARIKI DUNSTAN (P)
- MONYMUSK DOROTHY 070083 (SBM) (P)
- OKAWA PANDA 9225 (P)
- GRASSMERE PRINCESS 706 (P)
- OKAWA MARSHALL 1103 (P)
- KOANUI MINERVA 9079 (P)
- KOANUI BEDFORD 0103 (P)
- KOANUI CYNTHIA 0259 (P)

KOANUI CYNTHIA 7020 (P)

- KOANUI EXCITEMENT 5024 (P)
- KOANUI CYNTHIA 2014 (P)

WITHDRAWN

\$ INDEX VALUES	
Hereford Prime	+\$122
Beef Heifer	+\$105
Dairy Beef	+\$101

CALVING EASE EBVs				GROWTH & MILK EBVs				
CE DIR	CE DTRS	GEST	BWT	200	400	600	MAT	MILK
-0.1	+2.3	-2.8	+4.9	+36	+65	+91	+79	+19

FERTILITY EBVs	
SS	DTC
+3.2	-3.2

CARCASE EBVs					
CW	EMA	RIB	RUMP	RYB	IMF
+58	+5.0	+0.6	+0.5	+1.6	+0.2

Traits Observed: CE BWT 200WT 400WT(x2) 600WT(x2) SS FAT EMA IMF Genomics

In the top 10% of the breed for Scrotal Size EBV. A bull with real barrel and meat like his dam who has had three standout calves. The sire, Grassmere Gallant, has done a top job, purchased at \$40,000 and going strong at Koanui at six years of age. R564 has good short Gestation Length EBV and high Retail Beef Yield EBV. Heterozygous Polled.



Purchaser:..... Price: \$.....

LOT 20

KOANUI KINSIT R214

BORN 28/07/20 HB No. 0216200214P

MATARIKI KINSIT (P)

- MATARIKI 110637 (P)
- MATARIKI VICTORIA 120223 (P)

- MATARIKI JAULIN 080665 (S)
- MATARIKI VICTORIA 070351 (P)
- MATARIKI HERMAN 070400 (P)
- MATARIKI VICTORIA 080691 (P)

KOANUI AMETHYST 7072 (P)

- KOANUI EXCITEMENT 5024 (P)
- KOANUI AMETHYST 3218 (SBM) (P)

- OKAWA MARSHALL 1103 (P)
- KOANUI MINERVA 9079 (P)
- KOANUI UNANIMOUS 0408 (BM) (P)
- KOANUI AMETHYST 9279 (P)

WITHDRAWN

\$ INDEX VALUES	
Hereford Prime	+\$107
Beef Heifer	+\$104
Dairy Beef	+\$101

CALVING EASE EBVs				GROWTH & MILK EBVs				
CE DIR	CE DTRS	GEST	BWT	200	400	600	MAT	MILK
-1.0	+2.3	-1.8	+5.9	+39	+72	+104	+115	+19

FERTILITY EBVs	
SS	DTC
+2.7	-3.4

CARCASS EBVs					
CW	EMA	RIB	RUMP	RBV	IMF
+69	+4.6	+0.4	+0.2	+1.7	-0.1

Traits Observed: CE BWT 200WT 400WT(x2) 600WT(x2) SS FAT EMA IMF Genomics

Another classic Kinsit son with carcass, length, performance and very good testicles. In the top 10% of the breed for 400 and 600-day Growth EBVs and Carcass Weight. Homozygous Polled.



Purchaser:..... Price: \$.....

LOT 21

KOANUI XCELERATOR R144

BORN 24/07/20 HB No. 0216200144P

**KOANUI XCELERATOR 5088 (BM)
(P)**

- TRIARA XCELERATOR 594X (IMP CAN) (P)
- KOANUI GLORY 0303 (P)

- TRIARA UNLEASHED 893U (P)
- BET-AN 40L NANETTE 23N (P)
- KOANUI SPECTRE 8365 (P)
- KOANUI GLORY 8258 (P)

KOANUI IRANE 6244 (P)

- KOANUI CHEROKEE 3407 (P)
- KOANUI IRANE 7019 (P)

- KOANUI CHEROKEE 9075 (BM) (P)
- KOANUI BLUSH 0276 (SBM) (P)
- MAHUTA AXLE (BM) (P)
- KOANUI IRANE U269 (GBM) (P)

\$ INDEX VALUES	
Hereford Prime	+ \$120
Beef Heifer	+ \$192
Dairy Beef	+ \$131

CALVING EASE EBVs				GROWTH & MILK EBVs				
CE DIR	CE DTRS	GEST	BWT	200	400	600	MAT	MILK
+9.1	+5.2	+4.6	+3.5	+35	+64	+90	+77	+27

FERTILITY EBVs	
SS	DTC
+2.5	-4.4

CARCASS EBVs					
CW	EMA	RIB	RUMP	RBY	IMF
+62	+3.6	+0.9	+1.0	+0.9	+0.8

Traits Observed: GL CE BWT 200WT 400WT(x2) 600WT(x2) SS FAT EMA IMF Genomics

Very high \$ Indexes, in the top 10% of the breed for Beef Heifer and Dairy Indexes. A stout bull with carcass and calving ease is a valuable combination. Another Xcelerator that ticks all the boxes. Lots of Benchmark animals in this pedigree. Homozygous Polled.



Purchaser: Price: \$.....

LOT 22

KOANUI KINSUT R574

BORN 16/08/20 HB No. 0216200574P

MATARIKI KINSIT (P)

- MATARIKI 110637 (P)
- MATARIKI VICTORIA 120223 (P)

- MATARIKI JAULIN 080665 (S)
- MATARIKI VICTORIA 070351 (P)
- MATARIKI HERMAN 070400 (P)
- MATARIKI VICTORIA 080691 (P)

KOANUI GRACEFUL 7333 (P)

- KOANUI MIDRIB 5382 (P)
- KOANUI GRACEFUL 5305 (P)

- OKAWA MARSHALL 1103 (P)
- KOANUI CYNTHIA 1112 (P)
- KOANUI CHEROKEE 3407 (P)
- KOANUI GRACEFUL 3114 (P)

\$ INDEX VALUES	
Hereford Prime	+\$113
Beef Heifer	+\$49
Dairy Beef	+\$83

CALVING EASE EBVs				GROWTH & MILK EBVs				
CE DIR	CE DTRS	GEST	BWT	200	400	600	MAT	MILK
-5.5	-0.2	+0.1	+5.9	+35	+66	+89	+80	+18

FERTILITY EBVs	
SS	DTC
+3.8	-4.3

CARCASS EBVs					
CW	EMA	RIB	RUMP	RYB	IMF
+56	+4.4	+1.4	+1.8	+0.8	+0.5

Traits Observed: CE BWT 200WT 400WT(x2) 600WT(x2) SS FAT EMA IMF Genomics

This is a carcass bull with tremendous body and backend. The dam, Koanui Graceful 7333, is a very stylish and feminine young female. Kinsut R574 is the perfect combination to get the best of both types. Homozygous polled.



Purchaser:..... Price: \$.....

LOT 23

KOANUI KING R158

BORN 26/07/20 HB No. 0216200158P

KOANUI KING P438 (P)

- { EARNSCLEUGH KING 155713 (P)
- { KOANUI PEARL 2176 (SBM) (P)

- { EARNSCLEUGH DUKE 111483 (S)
- { EARNSCLEUGH CYNTHIA 084784 (P)
- { OKAWA BARITONE 9027 (P)
- { KOANUI PEARL 0510 (P)

KOANUI CINDY 1524 (P)

- { KOANUI CAPTAIN 8624 (P)
- { KOANUI CINDY 8278 (P)

- { KOANUI CLAMOR 2171 (P)
- { KOANUI BLUSH U290 (SBM) (P)
- { KOANUI DISPLAY 5588 (ET) (P)
- { KOANUI CINDY 5451 (P)

\$ INDEX VALUES	
Hereford Prime	+\$130
Beef Heifer	+\$127
Dairy Beef	+\$111

CALVING EASE EBVs				GROWTH & MILK EBVs				
CE DIR	CE DTRS	GEST	BWT	200	400	600	MAT	MILK
+1.5	+3.3	+2.0	+3.8	+36	+63	+89	+74	+21

FERTILITY EBVs	
SS	DTC
+2.5	-4.1

CARCASE EBVs					
CW	EMA	RIB	RUMP	RBY	IMF
+61	+4.0	+1.8	+2.4	+0.3	+1.0

Traits Observed: CE BWT 200WT 400WT(x2) 600WT(x2) SS FAT EMA IMF Genomics

King R158 has a great back end and constitution. He is from a top cow at 10 years of age with one of this year's best calves. He will breed really functional and efficient cattle for hill country. Homozygous Polled.



Purchaser:..... Price: \$.....

LOT 24

KOANUI KINSIT R302

BORN 01/08/20 HB No. 0216200302P

MATARIKI KINSIT (P)

- MATARIKI 110637 (P)
- MATARIKI VICTORIA 120223 (P)

- MATARIKI JAULIN 080665 (S)
- MATARIKI VICTORIA 070351 (P)
- MATARIKI HERMAN 070400 (P)
- MATARIKI VICTORIA 080691 (P)

KOANUI ROSE 7351 (P)

- YAVENVALE KAHUNA K115 (IMP AUS) (P)
- KOANUI ROSE 7015 (P)

- GB 57U CAN DOO 102Y (IMP CAN) (P)
- YAVENVALE LOCHIEL LADY D488 (P) (P)
- KOANUI CLASS 5292 (P)
- KOANUI ROSE 5407 (SBM) (P)

WITHDRAWN

\$ INDEX VALUES	
Hereford Prime	+\$117
Beef Heifer	+\$103
Dairy Beef	+\$103

CALVING EASE EBVs				GROWTH & MILK EBVs				
CE DIR	CE DTRS	GEST	BWT	200	400	600	MAT	MILK
-0.4	+3.3	-0.4	+5.8	+37	+65	+92	+75	+22

FERTILITY EBVs	
SS	DTC
+1.9	-2.8

CARCASS EBVs					
CW	EMA	RIB	RUMP	RYB	IMF
+58	+3.9	+2.4	+2.8	+0.3	+0.8

Traits Observed: CE BWT 200WT 400WT(x2) 600WT(x2) SS FAT EMA IMF Genomics

These Kinsit cattle are like peas in a pod. Depth, body and carcass, ideal for hard country in the beef industry. Homozygous Polled.



Purchaser:..... Price: \$.....

LOT 25

KOANUI LEGEND R359

BORN 04/08/20 HB No. 0216200359P

KOANUI LEGEND 7109 (P)

- R LEADER 6964 (IMP USA) (BM) (P)
- KOANUI PEARL 8388 (GBM) (P)

- HYALITE ON TARGET 936 (P)
- R MISS REVOLUTION 1009 (P)
- KOANUI BATON 6187 (BM) (P)
- KOANUI PEARL 6107 (P)

KOANUI PEARL 6280 (P)

- KOANUI CHEROKEE 3407 (P)
- KOANUI PEARL 2436 (P)

- KOANUI CHEROKEE 9075 (BM) (P)
- KOANUI BLUSH 0276 (SBM) (P)
- KOANUI ULTIMATE 8086 (BM) (P)
- KOANUI PEARL 5460 (P)

\$ INDEX VALUES	
Hereford Prime	+\$140
Beef Heifer	+\$180
Dairy Beef	+\$126

CALVING EASE EBVs				GROWTH & MILK EBVs				
CE DIR	CE DTRS	GEST	BWT	200	400	600	MAT	MILK
+5.3	+5.0	+3.9	+4.0	+44	+71	+104	+82	+25

FERTILITY EBVs	
SS	DTC
+1.5	-3.3

CARCASE EBVs					
CW	EMA	RIB	RUMP	RYB	IMF
+69	+4.2	+1.8	+2.2	+0.5	+0.6

Traits Observed: CE BWT 200WT 400WT(x2) 600WT(x2) SS FAT EMA IMF Genomics

Legend R359 has a pedigree packed with Benchmark animals. He is a bull with good length who strides out nicely and he is exceptionally high in every \$ Index. His dam, Koanui Pearl 6280, is a power cow with performance who breeds very well - she is producing top sale bulls every year! The sire, Legend 7109, is also an important part of our breeding programme. Homozygous Polled.



Purchaser:..... Price: \$.....

LOT 26

KOANUI BROADWAY R427

BORN 06/08/20 HB No. 0216200427P

KOANUI BROADWAY 7292 (P)

- BEECHWOOD BIG TIME (P)
- KOANUI LEONORA 4116 (P)

- BEECHWOOD TURK (P)
- BEECHWOOD SPOT ON 14 (P)
- ROTOITI G123 (P)
- KOANUI LEONORA 0504 (P)

KOANUI IRANE 3312 (P)

- ORARI GORGE K2100035 (P)
- KOANUI IRANE 0418 (P)

- NITHDALE HOWARD 070115 (P)
- NITHDALE LESLIE 0310 (GBM) (P)
- PINECROFT WRANGLER 0726 (P)
- KOANUI IRANE 6207 (P)

WITHDRAWN

\$ INDEX VALUES	
Hereford Prime	+\$89
Beef Heifer	+\$81
Dairy Beef	+\$94

CALVING EASE EBVs				GROWTH & MILK EBVs				
CE DIR	CE DTRS	GEST	BWT	200	400	600	MAT	MILK
+1.8	-0.2	-1.0	+4.8	+37	+63	+88	+84	+20

FERTILITY EBVs	
SS	DTC
+3.6	-3.0

CARCASE EBVs					
CW	EMA	RIB	RUMP	RBY	IMF
+56	+2.8	+0.9	+1.4	+0.9	-1.1

Traits Observed: GL CE BWT 200WT 400WT(x2) 600WT(x2) SS FAT EMA IMF Genomics

Nice setup and structure on this bull from a very good cow. The 'K2' cattle are some we really like so there are some top genetics in this pedigree. Homozygous Polled.



Purchaser:..... Price: \$.....

LOT 27

KOANUI DRAGON R531

BORN 11/08/20 HB No. 0216200531P

LIMEHILLS DRAGON 170393 (P)

- { OKAWA ELECTRA 1117 (P)
- { LIMEHILLS JENNY 140009 (SBM) (P)

- { LIMEHILLS ELECTRA 07 888 (P)
- { OKAWA BELLA 7022 (SBM) (P)
- { LIMEHILLS STAMPER 110429 (BM) (P)
- { LIMEHILLS JENNY 110508 (P)

KOANUI LYDIA 5167 (P)

- { KOANUI UNIVERSAL 3445 (P)
- { KOANUI LYDIA 3052 (P)

- { KOANUI UNIVERSAL 1518 (P)
- { KOANUI CYNTHIA 1294 (P)
- { KOANUI DISPLAY 0603 (P)
- { KOANUI LYDIA 4260 (P)

\$ INDEX VALUES	
Hereford Prime	+\$121
Beef Heifer	+\$61
Dairy Beef	+\$98

CALVING EASE EBVs				GROWTH & MILK EBVs				
CE DIR	CE DTRS	GEST	BWT	200	400	600	MAT	MILK
-3.2	-4.2	+1.4	+5.9	+40	+69	+100	+75	+22

FERTILITY EBVs	
SS	DTC
+2.2	-3.3

CARCASE EBVs					
CW	EMA	RIB	RUMP	RBY	IMF
+61	+2.8	+0.7	+0.3	+0.4	+0.9

Traits Observed: CE BWT 200WT 400WT(x2) 600WT(x2) SS FAT EMA IMF Genomics

A smooth, clean fronted bull with a slick skin. The dam, Koanui Lydia 5167, is a very attractive and productive female. Homozygous Polled.



Purchaser:..... Price: \$.....

LOT 28

KOANUI GALLANT R614

BORN 23/08/20 HB No. 0216200614P

GRASSMERE GALLANT 152 (P)

- MONYMUSK GALLANT 110089 (P)
- GRASSMERE PRINCESS 826 (P)

- MATARIKI DUNSTAN (P)
- MONYMUSK DOROTHY 070083 (SBM) (P)
- OKAWA PANDA 9225 (P)
- GRASSMERE PRINCESS 706 (P)

KOANUI PEARL 7446 (P)

- OKAWA MARINE 140138 (P)
- KOANUI PEARL 2152 (P)

- OKAWA MAJOR 2003 (P)
- OKAWA LYDIA 1144 (SBM) (P)
- KOANUI CHEROKEE 3075 (BM) (P)
- KOANUI PEARL 9061 (P)

WITHDRAWN

\$ INDEX VALUES	
Hereford Prime	+\$115
Beef Heifer	+\$122
Dairy Beef	+\$110

CALVING EASE EBVs				GROWTH & MILK EBVs				
CE DIR	CE DTRS	GEST	BWT	200	400	600	MAT	MILK
+3.4	+2.6	+0.3	+6.2	+42	+57	+91	+75	+19

FERTILITY EBVs	
SS	DTC
+1.7	-1.5

CARCASS EBVs					
CW	EMA	RIB	RUMP	RBY	IMF
+59	+4.1	+0.0	-0.5	+2.1	+0.0

Traits Observed: GL CE BWT 200WT 400WT(x2) 600WT(x2) SS FAT EMA IMF Genomics

A good head and eye in a bull that walks out well. Dam, Koanui Pearl 7446, is the best of the 'Marine' females with an outstanding calf this year. Homozygous Polled.



Purchaser:..... Price: \$.....

LOT 29

KOANUI CHARISMA R215

BORN 28/07/20 HB No. 0216200215P

WAOIHINE CHARISMA 1601 (P)

- CAPETHORNE 10 34 (P)
- WAOIHINE SUSAN 1450 (P)

- CAPETHORNE 08 26 (P)
- CAPETHORNE LYDIA 08 80 (P)
- OKAWA BARITONE 9060 (P)
- WAOIHINE SUSAN 0907 (P)

KOANUI MOONBEAM 5171 (P)

- KOANUI SPARK 3030 (P)
- KOANUI MOONBEAM 2328 (P)

- OTAPAWA SPARK 3060 (BM) (ET) (P)
- KOANUI DAINTY 4126 (P)
- KOANUI SPECTRE 8365 (P)
- KOANUI MOONBEAM 9302 (P)

\$ INDEX VALUES	
Hereford Prime	+\$113
Beef Heifer	+\$132
Dairy Beef	+\$104

CALVING EASE EBVs				GROWTH & MILK EBVs				
CE DIR	CE DTRS	GEST	BWT	200	400	600	MAT	MILK
+2.4	+6.6	-2.4	+3.7	+33	+62	+86	+81	+18

FERTILITY EBVs	
SS	DTC
+1.5	-3.1

CARCASE EBVs					
CW	EMA	RIB	RUMP	RBY	IMF
+60	+4.5	+0.2	-0.4	+1.7	-0.1

Traits Observed: CE BWT 200WT 400WT(x2) 600WT(x2) SS FAT EMA IMF Genomics

A bull with plenty of stretch and a strong top. A good crossing bull over moderate cows. Homozygous Polled.



Purchaser:..... Price: \$.....

LOT 30

KOANUI DRAGON R424

BORN 06/08/20 HB No. 0216200424P

LIMEHILLS DRAGON 170393 (P)

- { OKAWA ELECTRA 1117 (P)
- { LIMEHILLS JENNY 140009 (SBM) (P)

- { LIMEHILLS ELECTRA 07 888 (P)
- { OKAWA BELLA 7022 (SBM) (P)
- { LIMEHILLS STAMPER 110429 (BM) (P)
- { LIMEHILLS JENNY 110508 (P)

KOANUI ROSE 5385 (P)

- { ROTOITI G123 (P)
- { KOANUI ROSE 0257 (P)

- { LAKE B107 (P)
- { STREAMLANDS LADY GRACEFUL 740 (SBM) (P)
- { KOANUI UNRIVALLED 6345 (P)
- { KOANUI ROSE 6209 (P)

\$ INDEX VALUES	
Hereford Prime	+\$123
Beef Heifer	+\$82
Dairy Beef	+\$93

CALVING EASE EBVs				GROWTH & MILK EBVs				
CE DIR	CE DTRS	GEST	BWT	200	400	600	MAT	MILK
-2.6	+1.4	+2.1	+5.5	+34	+62	+92	+88	+12

FERTILITY EBVs	
SS	DTC
+2.4	-3.8

CARCASE EBVs					
CW	EMA	RIB	RUMP	RBY	IMF
+55	+2.4	+0.9	+0.7	+0.7	+0.6

Traits Observed: CE BWT 200WT 400WT(x2) 600WT(x2) SS FAT EMA IMF Genomics

A really nice bull with length, a good backend and softness. A good blend of sire and dam, the bulk of Dragon with the style of Rose put together in a complete package. Homozygous Polled.



Purchaser:..... Price: \$.....

LOT 31

KOANUI KINSIT R643

BORN 25/08/20 HB No. 0216200643P

MATARIKI KINSIT (P)

- ⎓ MATARIKI 110637 (P)
- ⎓ MATARIKI VICTORIA 120223 (P)

- ⎓ MATARIKI JAULIN 080665 (S)
- ⎓ MATARIKI VICTORIA 070351 (P)
- ⎓ MATARIKI HERMAN 070400 (P)
- ⎓ MATARIKI VICTORIA 080691 (P)

KOANUI AMETHYST 7568 (P)

- ⎓ KOANUI MARSHALL 4164 (P)
- ⎓ KOANUI AMETHYST 3484 (P)

- ⎓ OKAWA MARSHALL 1103 (P)
- ⎓ KOANUI IRANE 4085 (P)
- ⎓ KOANUI BOULDER 0229 (P)
- ⎓ KOANUI AMETHYST 8172 (GBM) (P)

\$ INDEX VALUES	
Hereford Prime	+\$125
Beef Heifer	+\$109
Dairy Beef	+\$101

CALVING EASE EBVs				GROWTH & MILK EBVs				
CE DIR	CE DTRS	GEST	BWT	200	400	600	MAT	MILK
+0.0	+4.8	+2.5	+4.6	+35	+57	+83	+62	+19

FERTILITY EBVs	
SS	DTC
+2.2	-3.6

CARCASS EBVs					
CW	EMA	RIB	RUMP	RBY	IMF
+53	+3.4	+1.3	+1.4	+0.5	+0.9

Traits Observed: CE BWT 200WT 400WT(x2) 600WT(x2) SS FAT EMA IMF Genomics

A very complete bull with appealing cosmetics and a nice balance of carcass data. Kinsit has done a very consistent job producing quality cattle. Homozygous Polled.



Purchaser:..... Price: \$.....

LOT 32

KOANUI GET START R683

BORN 01/09/20 HB No. 0216200683P

BEECHWOOD GET STARTED 21 (P)

- OKAWA GOING 3011 (P)
- BEECHWOOD SPOT ON 239 (P)

- OKAWA MARSHALL 1103 (P)
- OKAWA LYDIA 1061 (P)
- BEECHWOOD TURK (P)
- BEECHWOOD SPOT ON 18 (P)

KOANUI AMETHYST 4445 (P)

- ROTOITI G123 (P)
- KOANUI AMETHYST 9202 (P)

- LAKE B107 (P)
- STREAMLANDS LADY GRACEFUL 740 (SBM) (P)
- SBP JAMAICA 06 0725 (P)
- KOANUI AMETHYST 1030 (P)

\$ INDEX VALUES	
Hereford Prime	+\$86
Beef Heifer	+\$61
Dairy Beef	+\$90

CALVING EASE EBVs				GROWTH & MILK EBVs				
CE DIR	CE DTRS	GEST	BWT	200	400	600	MAT	MILK
-1.0	+0.7	+0.6	+4.8	+31	+56	+84	+87	+17

FERTILITY EBVs	
SS	DTC
+2.1	-3.7

CARCASS EBVs					
CW	EMA	RIB	RUMP	RYB	IMF
+50	+2.3	+0.6	+0.4	+0.2	+0.2

Traits Observed: CE BWT 200WT 400WT(x2) 600WT(x2) SS FAT EMA IMF Genomics

A moderate framed bull with plenty of meat. Different from most of the Get Started sons but has the best of both sire and dam, giving a very functional type of animal. The youngest bull in the sale. Heterozygous Polled.



Purchaser:..... Price: \$.....

LOT 33

KOANUI BATON R379

BORN 04/08/20 HB No. 0216200379P

OTENGI BATON 484 (P)

- { OTENGI BATON 147 (P)
- { OTENGI GOLD 206 (P)

- { CRAIGMORE BATON 09173 (P)
- { OTENGI AMETHYST 1263 (P)
- { CRAIGMORE GOLD 11379 (P)
- { WAIMAIRE LEONORA 1310 (P)

KOANUI IRANE P160 (P)

- { GRASSMERE GALLANT 152 (P)
- { KOANUI IRANE 4364 (P)

- { MONYMUSK GALLANT 110089 (P)
- { GRASSMERE PRINCESS 826 (P)
- { KOANUI ROGER 1581 (P)
- { KOANUI IRANE 2225 (P)

\$ INDEX VALUES	
Hereford Prime	+ \$112
Beef Heifer	+ \$154
Dairy Beef	+ \$123

CALVING EASE EBVs				GROWTH & MILK EBVs				
CE DIR	CE DTRS	GEST	BWT	200	400	600	MAT	MILK
+6.9	+2.5	+0.9	+5.7	+37	+66	+98	+94	+18

FERTILITY EBVs	
SS	DTC
+3.0	-2.7

CARCASS EBVs					
CW	EMA	RIB	RUMP	RBY	IMF
+58	+2.7	+1.4	+1.5	-0.3	+0.8

Traits Observed: CE BWT 200WT 400WT(x2) 600WT(x2) SS FAT EMA IMF Genomics

A top bull of this next mob. Koanui Baton R379 is a bull with punch, bulk, back-end and a very strong set of figures. A very exciting pedigree on the top and bottom and from a top two-year heifer that is one of our best young cows. Exceptionally high Dairy Beef \$ Index. Homozygous Polled.



Purchaser: Price: \$.....

LOT 34

KOANUI STREAKER R340

BORN 04/08/20 HB No. 0216200340P

OTENGI STREAKER 33 (P)

- { LIMEHILLS STREAKER 150368 (P)
- { OTENGI AMETHYST 1263 (P)

- { LIMEHILLS STARTER 131040 (BM) (P)
- { LIMEHILLS INA 130909 (SBM) (P)
- { OTENGI FULLBACK 565 (P)
- { OTENGI AMETHYST 893 (P)

KOANUI IRANE P706 (P)

- { KOANUI INDIA 4226 (P)
- { KOANUI IRANE 1127 (SBM) (P)

- { KAIRURU INDIA 110045 (P)
- { KOANUI REGAL 0007 (P)
- { KOANUI ULTIMATE 8086 (BM) (P)
- { KOANUI IRANE 9115 (P)

\$ INDEX VALUES	
Hereford Prime	+ \$170
Beef Heifer	+ \$172
Dairy Beef	+ \$121

CALVING EASE EBVs				GROWTH & MILK EBVs				
CE DIR	CE DTRS	GEST	BWT	200	400	600	MAT	MILK
+0.5	+3.9	-1.4	+5.8	+43	+71	+114	+73	+31

FERTILITY EBVs	
SS	DTC
+1.4	-4.7

CARCASE EBVs					
CW	EMA	RIB	RUMP	RBY	IMF
+71	+4.6	+2.0	+2.7	+1.1	+1.2

Traits Observed: GL CE BWT 200WT 400WT(x2) 600WT(x2) SS FAT EMA IMF Genomics

A carcass bull with a very good body and he is complete, very much like his sire who is breeding very well and a replica of this bull. Impeccable feet and constitution to shift anywhere. Very high across all three \$ Indexes and in the top 5% of the breed for Hereford Prime Index. Homozygous Polled.



Purchaser: Price: \$

LOT 35

KOANUI XCELERATOR R145

BORN 24/07/20 HB No. 0216200145P

KOANUI XCELERATOR 5088 (BM)
(P)

- TRIARA XCELERATOR 594X (IMP CAN) (P)
- KOANUI GLORY 0303 (P)

- TRIARA UNLEASHED 893U (P)
- BET-AN 40L NANETTE 23N (P)
- KOANUI SPECTRE 8365 (P)
- KOANUI GLORY 8258 (P)

KOANUI BLUSH 6457 (P)

- KOANUI BRITON 4260 (P)
- KOANUI BLUSH 3453 (SBM) (P)

- KOANUI BRITON 2044 (P)
- KOANUI ROSE 1086 (P)
- KOANUI UNANIMOUS 0408 (BM) (P)
- KOANUI BLUSH 8255 (P)

\$ INDEX VALUES	
Hereford Prime	+\$159
Beef Heifer	+\$218
Dairy Beef	+\$134

CALVING EASE EBVs				GROWTH & MILK EBVs				
CE DIR	CE DTRS	GEST	BWT	200	400	600	MAT	MILK
+9.4	+6.1	+3.1	+3.3	+36	+72	+93	+77	+13

FERTILITY EBVs	
SS	DTC
+2.6	-4.1

CARCASE EBVs					
CW	EMA	RIB	RUMP	RBY	IMF
+64	+3.5	+1.2	+1.4	+0.3	+0.9

Traits Observed: GL CE BWT 200WT 400WT(x2) 600WT(x2) SS FAT EMA IMF Genomics

Wow! What a bull with an amazing set of figures. We can't say enough about how well the Xcelerator bull has bred. To get a sire that is so sound with such a good body, carcass and exceptional calving ease - what an asset to any breeding programme. In the top 5% of the breed for every \$ Index! Homozygous Polled. Koanui to retain semen for within-herd use.



Purchaser:..... Price: \$.....

LOT 36

KOANUI STREAKER R522

BORN 10/08/20 HB No. 0216200522P

OTENGI STREAKER 33 (P)

- LIMEHILLS STREAKER 150368 (P)
- OTENGI AMETHYST 1263 (P)

- LIMEHILLS STARTER 131040 (BM) (P)
- LIMEHILLS INA 130909 (SBM) (P)
- OTENGI FULLBACK 565 (P)
- OTENGI AMETHYST 893 (P)

KOANUI AMETHYST P533 (P)

- BEECHWOOD DOUBTLESS (P)
- KOANUI AMETHYST 5442 (P)

- BEECHWOOD TURK (P)
- BEECHWOOD SPOT ON 968 (P)
- KOANUI NANO 3259 (P)
- KOANUI AMETHYST 3268 (P)

\$ INDEX VALUES	
Hereford Prime	+\$151
Beef Heifer	+\$190
Dairy Beef	+\$126

CALVING EASE EBVs				GROWTH & MILK EBVs				
CE DIR	CE DTRS	GEST	BWT	200	400	600	MAT	MILK
+5.1	+6.2	-1.2	+1.9	+34	+62	+90	+65	+28

FERTILITY EBVs	
SS	DTC
+1.4	-6.4

CARCASS EBVs					
CW	EMA	RIB	RUMP	RYB	IMF
+65	+3.7	+1.8	+2.0	+0.3	+1.3

Traits Observed: CE BWT 200WT 400WT(x2) 600WT(x2) SS FAT EMA IMF Genomics

A real easy-doing bull of moderate frame, good body and spring of rib. A two year heifer's calf and a standout bull of his type. Guts, constitution and ideal data set. Don't miss giving this bull a serious look. In the top 10% of the breed for every \$ Index. Homozygous Polled.



LOT 37

KOANUI STREAKER R157

BORN 26/07/20 HB No. 0216200157P

OTENGI STREAKER 33 (P)

- LIMEHILLS STREAKER 150368 (P)
- OTENGI AMETHYST 1263 (P)

- LIMEHILLS STARTER 131040 (BM) (P)
- LIMEHILLS INA 130909 (SBM) (P)
- OTENGI FULLBACK 565 (P)
- OTENGI AMETHYST 893 (P)

KOANUI GRACEFUL 9376 (P)

- SBP JAMAICA 06 0725 (P)
- KOANUI GRACEFUL 5224 (P)

- KOANUI STYLE 3066 (P)
- SBP BELLA 04 511 (P)
- KOANUI UNION 2568 (P)
- KOANUI GRACEFUL U398 (BM) (P)

\$ INDEX VALUES	
Hereford Prime	+ \$107
Beef Heifer	+ \$37
Dairy Beef	+ \$76

CALVING EASE EBVs				GROWTH & MILK EBVs				
CE DIR	CE DTRS	GEST	BWT	200	400	600	MAT	MILK
-8.7	+1.0	+1.0	+8.0	+44	+71	+109	+100	+18

FERTILITY EBVs	
SS	DTC
+3.1	-3.6

CARCASE EBVs					
CW	EMA	RIB	RUMP	RYB	IMF
+59	+2.3	+0.2	-0.2	+0.6	+0.3

Traits Observed: GL CE BWT 200WT 400WT(x2) 600WT(x2) SS FAT EMA IMF Genomics

A powerhouse bull with constitution and performance as the figures highlight. Very high Growth EBVs in the top 10% of the breed. Not suitable for heifers. The dam, Koanui Graceful 9376, was kept until 11 years of age. Homozygous Polled.



Purchaser: Price: \$.....

LOT 38

KOANUI CHARISMA R189

BORN 27/07/20 HB No. 0216200189P

WAOIHINE CHARISMA 1601 (P)

- { CAPETHORNE 10 34 (P)
- { WAOIHINE SUSAN 1450 (P)

- { CAPETHORNE 08 26 (P)
- { CAPETHORNE LYDIA 08 80 (P)
- { OKAWA BARITONE 9060 (P)
- { WAOIHINE SUSAN 0907 (P)

KOANUI GIRLIE 4338 (P)

- { KOANUI USURPER 1322 (P)
- { KOANUI GIRLIE 4141 (P)

- { KOANUI UPPER 9102 (P)
- { KOANUI IRANE 8230 (P)
- { KOANUI SAFETY U130 (BM) (P)
- { KOANUI GIRLIE 0207 (SBM) (P)

\$ INDEX VALUES	
Hereford Prime	+\$122
Beef Heifer	+\$112
Dairy Beef	+\$94

CALVING EASE EBVs				GROWTH & MILK EBVs				
CE DIR	CE DTRS	GEST	BWT	200	400	600	MAT	MILK
-0.5	+6.6	-1.0	+4.8	+36	+57	+82	+67	+19

FERTILITY EBVs	
SS	DTC
+2.6	-4.9

CARCASS EBVs					
CW	EMA	RIB	RUMP	RBV	IMF
+53	+3.4	+1.5	+1.3	+0.8	+0.2

Traits Observed: CE BWT 200WT 400WT(x2) 600WT(x2) SS FAT EMA IMF Genomics

A very appealing bull and one of the best Charisma sons. Plenty of softness with very positive fats and a very useful bull. Homozygous Polled.



Purchaser:..... Price: \$.....

LOT 39

KOANUI MIDRIB R136

BORN 25/07/20 HB No. 0216200136P

KOANUI MIDRIB P433 (P)

- { KOANUI MIDRIB 5382 (P)
- { KOANUI AMETHYST 8358 (P)

- { OKAWA MARSHALL 1103 (P)
- { KOANUI CYNTHIA 1112 (P)
- { KOANUI BATON 6187 (BM) (P)
- { KOANUI AMETHYST 6077 (P)

KOANUI LEONORA P442 (P)

- { BEECHWOOD BIG TIME (P)
- { KOANUI LEONORA 4607 (P)

- { BEECHWOOD TURK (P)
- { BEECHWOOD SPOT ON 14 (P)
- { KOANUI MANSION 0246 (P)
- { KOANUI LEONORA 6453 (ET) (P)

\$ INDEX VALUES	
Hereford Prime	+\$112
Beef Heifer	+\$145
Dairy Beef	+\$116

CALVING EASE EBVs				GROWTH & MILK EBVs				
CE DIR	CE DTRS	GEST	BWT	200	400	600	MAT	MILK
+5.8	+3.6	-1.5	+4.1	+36	+63	+91	+83	+19

FERTILITY EBVs	
SS	DTC
+3.7	-3.1

CARCASE EBVs					
CW	EMA	RIB	RUMP	RYB	IMF
+57	+2.3	+0.7	+0.8	+0.2	+0.3

Traits Observed: CE BWT 200WT 400WT(x2) 600WT(x2) SS FAT EMA IMF

Another two year heifer's calf. Midrib R136 is a very good heifer mating bull with the phenotype and data of good calving ease with smoothness and yet he still has softness about him. Genomics testing in process.



Purchaser:..... Price: \$.....

LOT 40

KOANUI OLLIE R230

BORN 29/07/20 HB No. 0216200230P

KAIRURU OLLIE 170707 (P)

KAIRURU LASSO 140450 (P)

KAIRURU LEONORA 150516 (P)

KAIRURU IKE 110006 (P)

KAIRURU ACET 080001 (SBM) (P)

CAPETHORNE 10 34 (P)

KAIRURU LEONORA 130006 (P)

KOANUI HOOD 3135 (P)

KOANUI UNANIMOUS 0408 (BM) (P)

KOANUI AMETHYST P629 (P)

KOANUI AMETHYST 3315 (P)

KOANUI LADY REDFIELD 7321 (P)

KOANUI UNANIMOUS 0408 (BM) (P)

KOANUI AMETHYST 5218 (P)

WITHDRAWN

\$ INDEX VALUES	
Hereford Prime	+\$120
Beef Heifer	+\$81
Dairy Beef	+\$91

CALVING EASE EBVs				GROWTH & MILK EBVs				
CE DIR	CE DTRS	GEST	BWT	200	400	600	MAT	MILK
-2.7	+2.1	+0.9	+3.8	+32	+60	+86	+77	+17

FERTILITY EBVs	
SS	DTC
+2.2	-4.8

CARCASE EBVs					
CW	EMA	RIB	RUMP	RYB	IMF
+58	+3.3	+1.5	+2.0	+0.4	+0.5

Traits Observed: CE BWT 200WT 400WT(x2) 600WT(x2) SS FAT EMA IMF

An attractive bull with a strong head and eye set. A two year heifer's calf who we unfortunately lost this year. She had a very interesting pedigree. Genomics testing in process.



Purchaser:..... Price: \$.....

LOT 41

KOANUI KAHUNA R259

BORN 31/07/20 HB No. 0216200259P

KOANUI KAHUNA 7299 (P)

- YAVENVALE KAHUNA K115 (IMP AUS) (P)
- KOANUI MINERVA 9079 (P)

- CB 57U CAN DOO 102Y (IMP CAN) (P)
- YAVENVALE LOCHIEL LADY D488 (P) (P)
- KOANUI KOOTENAY 6605 (BM) (P)
- KOANUI MINERVA 6473 (P)

KOANUI DAINTY 7368 (P)

- KOANUI EXCITEMENT 5024 (P)
- KOANUI DAINTY 5211 (P)

- OKAWA MARSHALL 1103 (P)
- KOANUI MINERVA 9079 (P)
- MAHUTA JEHOSOPHAT 3018 (P)
- KOANUI DAINTY 3375 (P)

\$ INDEX VALUES	
Hereford Prime	+ \$105
Beef Heifer	+ \$90
Dairy Beef	+ \$106

CALVING EASE EBVs				GROWTH & MILK EBVs				
CE DIR	CE DTRS	GEST	BWT	200	400	600	MAT	MILK
-1.8	+1.1	-4.3	+5.8	+42	+70	+104	+91	+29

FERTILITY EBVs	
SS	DTC
+3.1	-3.1

CARCASS EBVs					
CW	EMA	RIB	RUMP	RBY	IMF
+66	+3.3	+1.2	+1.0	+0.5	+1.0

Traits Observed: CE BWT 200WT 400WT(x2) 600WT(x2) SS FAT EMA IMF Genomics

A stylish bull with a nice carriage and some very good numbers. He is in the top 10% of the breed for the growth EBVs. The sire, Koanui Kahuna 7299, is a very maternal bull who's daughters have very good udders plus he is a trait leader for Short Gestation Length EBV. Homozygous Polled.



Purchaser: Price: \$.....

LOT 42

KOANUI STREAKER R316

BORN 02/08/20 HB No. 0216200316P

OTENGI STREAKER 33 (P)

- LIMEHILLS STREAKER 150368 (P)
- OTENGI AMETHYST 1263 (P)

- LIMEHILLS STARTER 131040 (BM) (P)
- LIMEHILLS INA 130909 (SBM) (P)
- OTENGI FULLBACK 565 (P)
- OTENGI AMETHYST 893 (P)

KOANUI GIRLIE P136 (P)

- GRASSMERE GALLANT 152 (P)
- KOANUI GIRLIE 4580 (P)

- MONYMUSK GALLANT 110089 (P)
- GRASSMERE PRINCESS 826 (P)
- KOANUI DISPLAY 0381 (P)
- KOANUI GIRLIE 7258 (P)

\$ INDEX VALUES	
Hereford Prime	+\$124
Beef Heifer	+\$92
Dairy Beef	+\$94

CALVING EASE EBVs				GROWTH & MILK EBVs				
CE DIR	CE DTRS	GEST	BWT	200	400	600	MAT	MILK
-1.5	+0.9	+1.7	+6.1	+41	+66	+93	+67	+23

FERTILITY EBVs	
SS	DTC
+2.5	-4.8

CARCASS EBVs					
CW	EMA	RIB	RUMP	RBY	IMF
+55	+2.8	+1.2	+1.2	+0.6	+0.1

Traits Observed: CE BWT 200WT(x2) 400WT(x2) 600WT(x2) SS FAT EMA IMF Genomics

Koanui Streaker R316 is an early maturing bull with good 600-day growth. He will handle steep hill country. A two year heifer's calf. Homozygous Polled.



LOT 43

KOANUI GIBRALTAR R012

BORN 15/07/20 HB No. 0216200012P

KOANUI GIBRALTAR P223 (P)

- { GRASSMERE GALLANT 152 (P)
- { KOANUI GRACEFUL 3159 (P)

- { MONYMUSK GALLANT 110089 (P)
- { GRASSMERE PRINCESS 826 (P)
- { KOANUI CRUISE 1270 (P)
- { KOANUI GRACEFUL 1146 (P)

KOANUI BLUSH P554 (P)

- { EARNSCLEUGH KING 155713 (P)
- { KOANUI BLUSH 4349 (P)

- { EARNSCLEUGH DUKE 111483 (S)
- { EARNSCLEUGH CYNTHIA 084784 (P)
- { KOANUI CHEROKEE 9075 (BM) (P)
- { KOANUI BLUSH 8468 (SBM) (P)

\$ INDEX VALUES	
Hereford Prime	+ \$124
Beef Heifer	+ \$98
Dairy Beef	+ \$99

CALVING EASE EBVs				GROWTH & MILK EBVs				
CE DIR	CE DTRS	GEST	BWT	200	400	600	MAT	MILK
+2.6	+0.0	-1.0	+2.4	+26	+52	+69	+55	+13

FERTILITY EBVs	
SS	DTC
+3.0	-4.6

CARCASE EBVs					
CW	EMA	RIB	RUMP	RBY	IMF
+46	+3.7	+0.8	+1.0	+1.0	+0.1

Traits Observed: CE BWT 200WT 400WT(x2) 600WT(x2) SS FAT EMA IMF Genomics

A two year heifer's calf with length and very smooth. Gibraltar R012's dam, Koanui Blush P554, has some key Benchmark animals on her mother's side of the pedigree. Homozygous Polled.



Purchaser: Price: \$.....

LOT 44

KOANUI CAPTAIN R027

BORN 17/07/20 HB No. 0216200027P

KOANUI CAPTAIN 7395 (P)

- KOANUI CAPTAIN 4217 (P)
- KOANUI ROSE 1413 (GBM) (P)

- KOANUI CAPTAIN 1464 (P)
- KOANUI IRANE 2062 (P)
- KOANUI CHEROKEE 9075 (BM) (P)
- KOANUI ROSE 9391 (P)

KOANUI GLORY 7383 (P)

- OKAWA MARINE 140138 (P)
- KOANUI GLORY 3441 (P)

- OKAWA MAJOR 2063 (P)
- OKAWA LYDIA 1144 (SBM) (P)
- KOANUI CAPTAIN 1464 (P)
- KOANUI GLORY 1427 (P)

WITHDRAWN

\$ INDEX VALUES	
Hereford Prime	+\$125
Beef Heifer	+\$185
Dairy Beef	+\$124

CALVING EASE EBVs				GROWTH & MILK EBVs				
CE DIR	CE DTRS	GEST	BWT	200	400	600	MAT	MILK
+9.2	+3.7	-0.8	+2.4	+35	+59	+90	+67	+28

FERTILITY EBVs	
SS	DTC
+3.2	-5.3

CARCASE EBVs					
CW	EMA	RIB	RUMP	RYB	IMF
+60	+2.4	+0.5	+0.2	+1.3	-0.2

Traits Observed: CE BWT 200WT 400WT(x2) 600WT(x2) SS FAT EMA IMF Genomics

Captain R027 is in the top 10% of the breed for Beef Heifer \$ Index and he just slightly under the top 10% for Dairy Beef \$ Index. This speaks volumes to his overall set of figures for calving ease and growth. Homozygous Polled.



Purchaser:..... Price: \$.....

LOT 45

KOANUI MAJOR R271

BORN 30/07/20 HB No. 0216200271P

KOANUI MAJOR P469 (P)

- MAHUTA MAJOR 6018 (P)
- KOANUI SPIRIT QUEEN 6219 (P)

- LIMEHILLS STARTER 131078 (BM) (P)
- MAHUTA AMETHYST 4036 (P)
- KOANUI BUSTLER 2541 (P)
- KOANUI SPIRIT QUEEN 2308 (P)

KOANUI REGAL P591 (P)

- KOANUI XCELORATOR 5088 (BM) (P)
- KOANUI REGAL 5121 (P)

- TRIARA XCELORATOR 594X (IMP CAN) (P)
- KOANUI GLORY 0303 (P)
- KOANUI DISPLAY 2450 (P)
- KOANUI REGAL 1017 (P)

\$ INDEX VALUES	
Hereford Prime	+\$147
Beef Heifer	+\$179
Dairy Beef	+\$122

CALVING EASE EBVs				GROWTH & MILK EBVs				
CE DIR	CE DTRS	GEST	BWT	200	400	600	MAT	MILK
+8.4	+3.6	+1.0	+2.0	+33	+64	+82	+57	+15

FERTILITY EBVs	
SS	DTC
+2.5	-4.5

CARCASE EBVs					
CW	EMA	RIB	RUMP	RBV	IMF
+59	+2.7	+1.1	+1.2	+0.3	+0.4

Traits Observed: BWT 200WT 400WT(x2) 600WT(x2) SS FAT EMA IMF

An ideal yearling heifer bull with high calving ease, cosmetics, style and smoothness. The sire, Koanui Major P469, plays a very important part in Koanui's breeding programme and ticks so many boxes. With Major and Xcelerator in the pedigree R271 has a nice balance for heifer mating. Very high in every \$ Index and in the top 10% of the breed for Hereford Prime \$ Index. Genomics testing in process.



Purchaser:..... Price: \$.....

LOT 46

KOANUI X-RAY R559

BORN 13/08/20 HB No. 0216200559P

KOANUI X-RAY 7078 (P)

- KOANUI XCELORATOR 5088 (BM)
- { (P)
- { KOANUI BLUSH 0291 (P)

- { TRIARA XCELORATOR 594X (IMP CAN) (P)
- { KOANUI GLORY 0303 (P)
- { KOANUI BOULDER 7050 (ET) (P)
- { KOANUI BLUSH 2195 (SBM) (P)

KOANUI LADY REDFIELD 1539 (P)

- { GAY LEARNING HIKA (P)
- { KOANUI LADY REDFIELD 7321 (P)

- { MATARIKI DOMINION 050052 (P)
- { PLATFORM MISS EXECUTIVE 16 (SBM) (P)
- { KOANUI DISPLAY 5588 (ET) (P)
- { KOANUI LADY REDFIELD 5073 (P)

\$ INDEX VALUES	
Hereford Prime	+\$125
Beef Heifer	+\$124
Dairy Beef	+\$106

CALVING EASE EBVs				GROWTH & MILK EBVs				
CE DIR	CE DTRS	GEST	BWT	200	400	600	MAT	MILK
+2.2	+3.3	-3.8	+6.0	+41	+64	+86	+69	+19

FERTILITY EBVs	
SS	DTC
+1.6	-4.5

CARCASE EBVs					
CW	EMA	RIB	RUMP	RBY	IMF
+54	+3.1	+1.6	+1.8	+0.1	+0.6

Traits Observed: GL CE BWT 200WT 400WT(x2) 600WT(x2) SS FAT EMA IMF Genomics

X-Ray R559 is beautiful and dark with a very attractive front. Homozygous Polled.



Purchaser:..... Price: \$.....

LOT 47

KOANUI CHARISMA R435

BORN 06/08/20 HB No. 0216200435P

WAOIHINE CHARISMA 1601 (P)

- CAPETHORNE 10 34 (P)
- WAOIHINE SUSAN 1450 (P)

- CAPETHORNE 08 26 (P)
- CAPETHORNE LYDIA 08 80 (P)
- OKAWA BARITONE 9060 (P)
- WAOIHINE SUSAN 0907 (P)

KOANUI DAINTY 1542 (P)

- KOANUI CAPTAIN 8624 (P)
- KOANUI DAINTY 8432 (SBM) (P)

- KOANUI CLAMOR 2171 (P)
- KOANUI BLUSH U290 (SBM) (P)
- KOANUI UNANIMOUS 3152 (BM) (P)
- KOANUI DAINTY 2453 (PBM) (ET) (P)

\$ INDEX VALUES	
Hereford Prime	+\$127
Beef Heifer	+\$123
Dairy Beef	+\$105

CALVING EASE EBVs				GROWTH & MILK EBVs				
CE DIR	CE DTRS	GEST	BWT	200	400	600	MAT	MILK
+2.0	+5.0	-1.7	+3.1	+34	+55	+80	+60	+18

FERTILITY EBVs	
SS	DTC
+1.9	-2.8

CARCASS EBVs					
CW	EMA	RIB	RUMP	RBY	IMF
+57	+4.8	+1.1	+1.3	+1.4	+0.3

Traits Observed: CE BWT 200WT 400WT(x2) 600WT(x2) SS FAT EMA IMF Genomics

A showy bull with eye catching cosmetics and a good balance of figures. The dam, Lady Redfield 1539, was a good cow with a really nice pedigree and strong female line. Homozygous Polled.



Purchaser:..... Price: \$.....

LOT 48

KOANUI X-RAY R506

BORN 11/08/20 HB No. 0216200506P

KOANUI X-RAY 7078 (P)

- KOANUI XCELORATOR 5088 (BM)
- { (P)
- KOANUI BLUSH 0291 (P)

- { TRIARA XCELORATOR 594X (IMP CAN) (P)
- { KOANUI GLORY 0303 (P)
- { KOANUI BOULDER 7050 (ET) (P)
- { KOANUI BLUSH 2195 (SBM) (P)

KOANUI GLORY 7486 (P)

- { KOANUI HOOD 3135 (P)
- { KOANUI GLORY 4313 (P)

- { KOANUI UNANIMOUS 0408 (BM) (P)
- { KOANUI LADY REDFIELD 7321 (P)
- { KOANUI BUSTLER 2040 (P)
- { KOANUI GLORY 1126 (P)

\$ INDEX VALUES	
Hereford Prime	+\$166
Beef Heifer	+\$200
Dairy Beef	+\$125

CALVING EASE EBVs				GROWTH & MILK EBVs				
CE DIR	CE DTRS	GEST	BWT	200	400	600	MAT	MILK
+3.8	+6.0	-1.0	+5.9	+48	+86	+114	+93	+21

FERTILITY EBVs	
SS	DTC
+3.1	-5.0

CARCASE EBVs					
CW	EMA	RIB	RUMP	RYB	IMF
+80	+4.1	+1.1	+1.1	+0.5	+0.6

Traits Observed: GL CE BWT 200WT 400WT(x2) 600WT(x2) SS FAT EMA IMF Genomics

X-Ray R506 is the first-up bull of this last mob. He is a really interesting bull with a lot of potential exhibiting Calving ease with real performance and carcass, plenty of depth and growth and a good back-end. An incredible set of figures reflected in the high \$ Indexes across the board. Top 5% of the breed for Hereford Prime \$ Index and just on 10% or there about for the other two. There are some top Koanui bulls in this pedigree. Homozygous Polled.



Purchaser:..... Price: \$.....

LOT 49

KOANUI LEGEND R261

BORN 31/07/20 HB No. 0216200261P

KOANUI LEGEND 7109 (P)

{ R LEADER 6964 (IMP USA) (BM) (P)
 { KOANUI PEARL 8388 (GBM) (P)

{ HYALITE ON TARGET 936 (P)
 { R MISS REVOLUTION 1009 (P)
 { KOANUI BATON 6187 (BM) (P)
 { KOANUI PEARL 6107 (P)

KOANUI PEARL 6016 (P)

{ DAYS ROBIN HOOD H38 (AI) (ET)
 { (F) (F)
 { KOANUI PEARL 1010 (P)

{ ALLENDALE WATERHOUSE D1 (P)
 { ALLENDALE FANGYUS (AI) (P)
 { KOANUI UNRIVALLED 6345 (P)
 { KOANUI PEARL 5005 (ET) (P)

WITHDRAWN

\$ INDEX VALUES	
Hereford Prime	+\$127
Beef Heifer	+\$189
Dairy Beef	+\$122

CALVING EASE EBVs				GROWTH & MILK EBVs				
CE DIR	CE DTRS	GEST	BWT	200	400	600	MAT	MILK
+6.2	+7.4	-3.1	+4.0	+47	+67	+98	+95	+22

FERTILITY EBVs	
SS	DTC
+1.7	-4.0

CARCASE EBVs					
CW	EMA	RIB	RUMP	RBY	IMF
+68	+4.4	+0.6	+1.1	+1.5	-0.1

Traits Observed: CE BWT 200WT 400WT(x2) 600WT(x2) SS FAT EMA IMF Genomics

Legend R261 is right up there and a standout in all ways. Great presence, style, performance and a very different pedigree. The dam, Koanui Pearl 6016, is a good cow with capacity and volume and another really good calf at foot this year. High in all the \$ Indexes and in the top 10% of the breed for Beef Heifer \$ Index. Homozygous Polled.



Purchaser:..... Price: \$.....

LOT 50

KOANUI TECHNO R006

BORN 15/07/20 HB No. 0216200006P

KOANUI TECHNO 6179 (P)

- KOANUI TECHNO 3062 (BM) (P)
- KOANUI ANGEL 2392 (P)

- KOANUI UNANIMOUS 0408 (BM) (P)
- KOANUI BLUSH 6455 (P)
- KOANUI SPECTRE 8365 (P)
- KOANUI ANGEL 9249 (P)

KOANUI PRINCESS 3467 (P)

- KOANUI BOULDER 0229 (P)
- KOANUI PRINCESS 9229 (P)

- KOANUI BOULDER 7050 (ET) (P)
- KOANUI BLUSH 6081 (P)
- KOANUI RUSSIA 7325 (P)
- KOANUI PRINCESS 7009 (P)

\$ INDEX VALUES	
Hereford Prime	+\$120
Beef Heifer	+\$139
Dairy Beef	+\$108

CALVING EASE EBVs				GROWTH & MILK EBVs				
CE DIR	CE DTRS	GEST	BWT	200	400	600	MAT	MILK
+2.5	+5.0	-1.8	+4.6	+35	+62	+88	+79	+24

FERTILITY EBVs	
SS	DTC
+3.6	-5.8

CARCASS EBVs					
CW	EMA	RIB	RUMP	RYB	IMF
+53	+2.9	+1.6	+2.0	+0.2	+0.6

Traits Observed: GL CE BWT 200WT 400WT(x2) 600WT(x2) SS FAT EMA IMF Genomics

A Techno grandson, R006, is a quality bull with softness and a great skin. He is very tidy and complete in all ways, on paper and in the flesh. Homozygous Polled.



Purchaser:..... Price: \$.....

LOT 51

KOANUI XCELERATOR R061

BORN 20/07/20 HB No. 0216200061P

KOANUI XCELERATOR 5088 (BM)
(P)

- TRIARA XCELERATOR 594X (IMP
- CAN) (P)
- KOANUI GLORY 0303 (P)

- TRIARA UNLEASHED 893U (P)
- BET-AN 40L NANETTE 23N (P)
- KOANUI SPECTRE 8365 (P)
- KOANUI GLORY 8258 (P)

KOANUI ROSE 6334 (P)

- KOANUI HOOD 3135 (P)
- KOANUI ROSE 0257 (P)

- KOANUI UNANIMOUS 0408 (BM) (P)
- KOANUI LADY REDFIELD 7321 (P)
- KOANUI UNRIVALLED 6345 (P)
- KOANUI ROSE 6209 (P)

\$ INDEX VALUES	
Hereford Prime	+ \$128
Beef Heifer	+ \$184
Dairy Beef	+ \$122

CALVING EASE EBVs				GROWTH & MILK EBVs				
CE DIR	CE DTRS	GEST	BWT	200	400	600	MAT	MILK
+8.7	+6.7	+1.5	+2.8	+34	+61	+78	+55	+22

FERTILITY EBVs	
SS	DTC
+2.0	-4.5

CARCASE EBVs					
CW	EMA	RIB	RUMP	RBY	IMF
+52	+3.1	+2.1	+2.7	-0.2	+0.7

Traits Observed: GL CE BWT 200WT 400WT(x2) 600WT(x2) SS FAT EMA IMF Genomics

A very safe bull and ideal for heifer mating but far better than just a heifer bull. The dam, Koanui Rose 6334, is a very good cow while benchmark sire, Koanui Xcelerator 5088, just adds to the mix, making R061 a very interesting and strong sire pedigree. Very high \$ Indexes and just a whisker off the top 10% of the breed for Beef Heifer \$ Index. Homozygous Polled.



Purchaser:..... Price: \$.....

LOT 52

KOANUI BROADWAY R536

BORN 12/08/20 HB No. 0216200536P

KOANUI BROADWAY 7292 (P)

- BEECHWOOD BIG TIME (P)
- KOANUI LEONORA 4116 (P)

- BEECHWOOD TURK (P)
- BEECHWOOD SPOT ON 14 (P)
- ROTOITI G123 (P)
- KOANUI LEONORA 0504 (P)

KOANUI ANGEL 5022 (P)

- TRIARA XCELERATOR 594X (IMP CAN) (P)
- KOANUI ANGEL 8486 (P)

- TRIARA UNLEASHED 893U (P)
- BET-AN 40L NANETTE 23N (P)
- KOANUI UNANIMOUS 3152 (BM) (P)
- KOANUI ANGEL 2314 (P)

\$ INDEX VALUES	
Hereford Prime	+\$96
Beef Heifer	+\$128
Dairy Beef	+\$109

CALVING EASE EBVs				GROWTH & MILK EBVs				
CE DIR	CE DTRS	GEST	BWT	200	400	600	MAT	MILK
+4.8	+5.8	+0.2	+4.0	+37	+63	+86	+73	+21

FERTILITY EBVs	
SS	DTC
+1.1	-1.2

CARCASS EBVs					
CW	EMA	RIB	RUMP	RBY	IMF
+57	+2.3	+0.5	+0.4	+0.8	-0.2

Traits Observed: CE BWT 200WT 400WT(x2) 600WT(x2) SS FAT EMA IMF Genomics

Broadway R536 is a young herd sire that offers plenty of length and stretch with calving ease and maternal strength. Homozygous Polled.



Purchaser:..... Price: \$.....

LOT 53

KOANUI LEGEND R594

BORN 17/08/20 HB No. 0216200594P

KOANUI LEGEND 7109 (P)

- R LEADER 6964 (IMP USA) (BM) (P)
- KOANUI PEARL 8388 (GBM) (P)

- HYALITE ON TARGET 936 (P)
- R MISS REVOLUTION 1009 (P)
- KOANUI BATON 6187 (BM) (P)
- KOANUI PEARL 6107 (P)

KOANUI IRANE 1127 (SBM) (P)

- KOANUI ULTIMATE 8086 (BM) (P)
- KOANUI IRANE 9115 (P)

- KOANUI UNANIMOUS 3152 (BM) (P)
- KOANUI CYNTHIA 3501 (P)
- KOANUI KOOTENAY 6605 (BM) (P)
- KOANUI IRANE 6316 (BM) (P)

\$ INDEX VALUES	
Hereford Prime	+\$159
Beef Heifer	+\$174
Dairy Beef	+\$127

CALVING EASE EBVs				GROWTH & MILK EBVs				
CE DIR	CE DTRS	GEST	BWT	200	400	600	MAT	MILK
+3.5	+2.8	+3.7	+6.0	+54	+75	+115	+76	+26

FERTILITY EBVs	
SS	DTC
+2.0	-2.9

CARCASE EBVs					
CW	EMA	RIB	RUMP	RBY	IMF
+69	+3.2	+1.4	+1.4	+0.5	+0.9

Traits Observed: GL CE BWT 200WT 400WT(x2) 600WT(x2) SS FAT EMA IMF Genomics

Legend R594 will be a very good breeding bull with a lot to offer and a very safe pedigree. We don't believe the birth figure will be a problem as the pedigree doesn't have that amount of birth, it seems to be an anomaly as confirmed by the exceptional \$ Indexes. R594 has high \$ Indexes across the board and is in the top 10% of the breed for Dairy Beef \$ Index and top 5% for Hereford Prime \$ Index! Beef Heifer Index is also very high. The dam, Koanui Irane 1127, is a Silver Benchmark Dam. Homozygous Polled.



Purchaser:..... Price: \$.....

LOT 54

KOANUI CAPTAIN R246

BORN 29/07/20 HB No. 0216200246P

KOANUI CAPTAIN 7395 (P)

- KOANUI CAPTAIN 4217 (P)
- KOANUI ROSE 1413 (GBM) (P)

- KOANUI CAPTAIN 1464 (P)
- KOANUI IRANE 2062 (P)
- KOANUI CHEROKEE 9075 (BM) (P)
- KOANUI ROSE 9391 (P)

KOANUI MOONBEAM 7682 (P)

- BEECHWOOD BIG TIME (P)
- KOANUI MOONBEAM 1513 (P)

- BEECHWOOD TURK (P)
- BEECHWOOD SPOT ON 14 (P)
- KOANUI CHEROKEE 9075 (BM) (P)
- KOANUI MOONBEAM 9302 (P)

\$ INDEX VALUES	
Hereford Prime	+\$135
Beef Heifer	+\$202
Dairy Beef	+\$136

CALVING EASE EBVs				GROWTH & MILK EBVs				
CE DIR	CE DTRS	GEST	BWT	200	400	600	MAT	MILK
+8.9	+4.6	-0.2	+2.1	+37	+66	+97	+74	+29

FERTILITY EBVs	
SS	DTC
+2.3	-4.2

CARCASS EBVs					
CW	EMA	RIB	RUMP	RBV	IMF
+69	+4.0	+0.7	+0.6	+1.1	+0.8

Traits Observed: CE BWT 200WT 400WT(x2) 600WT(x2) SS FAT EMA IMF Genomics

Incredibly quiet, long, with a good body. One of the best data sets in the catalogue and it is easy to see why with his phenotype. Very high \$ Indexes and in the top 10% of the breed for both Beef Heifer and Dairy Beef \$ Indexes. Homozygous Polled.



Purchaser:..... Price: \$.....

LOT 55

KOANUI LANCELOT R029

BORN 17/07/20 HB No. 0216200029P

KOANUI LANCELOT P251 (P)

- { KOANUI LANCELOT 6436 (P)
- { KOANUI AMETHYST 5048 (P)

- { R LEADER 6964 (IMP USA) (BM) (P)
- { KOANUI MINERVA 9079 (P)
- { OKAWA MARSHALL 1103 (P)
- { KOANUI AMETHYST 6447 (P)

KOANUI CYNTHIA 7379 (P)

- { KOANUI BARITONE 5322 (P)
- { KOANUI CYNTHIA 5064 (P)

- { CRAIGMORE BARITONE 120305 (P)
- { KOANUI GLORY 0494 (P)
- { KOANUI SMOKE 3113 (P)
- { KOANUI CYNTHIA 7398 (P)

\$ INDEX VALUES	
Hereford Prime	+\$80
Beef Heifer	+\$89
Dairy Beef	+\$100

CALVING EASE EBVs				GROWTH & MILK EBVs				
CE DIR	CE DTRS	GEST	BWT	200	400	600	MAT	MILK
+3.8	+3.5	+0.0	+2.1	+28	+48	+62	+55	+22

FERTILITY EBVs	
SS	DTC
+1.6	-3.3

CARCASE EBVs					
CW	EMA	RIB	RUMP	RBV	IMF
+39	+2.8	+0.8	+0.6	+0.6	+0.3

Traits Observed: CE BWT 200WT 400WT(x2) 600WT(x2) SS FAT EMA IMF Genomics

Lancelot R029 is an early maturing bull with a good back-end. Homozygous Polled.



Purchaser:..... Price: \$.....

LOT 56

KOANUI KAHUNA R193

BORN 27/07/20 HB No. 0216200193P

KOANUI KAHUNA 7299 (P)

- YAVENVALE KAHUNA K115 (IMP AUS) (P)
- KOANUI MINERVA 9079 (P)

- CB 57U CAN DOO 102Y (IMP CAN) (P)
- YAVENVALE LOCHIEL LADY D488 (P) (P)
- KOANUI KOOTENAY 6605 (BM) (P)
- KOANUI MINERVA 6473 (P)

KOANUI REGAL 7397 (P)

- KOANUI TECHNO 3062 (BM) (P)
- KOANUI REGAL 1017 (P)

- KOANUI UNANIMOUS 0408 (BM) (P)
- KOANUI BLUSH 6455 (P)
- KOANUI BELTER 8406 (P)
- KOANUI REGAL 4528 (P)

\$ INDEX VALUES	
Hereford Prime	+\$112
Beef Heifer	+\$129
Dairy Beef	+\$117

CALVING EASE EBVs				GROWTH & MILK EBVs				
CE DIR	CE DTRS	GEST	BWT	200	400	600	MAT	MILK
+2.5	+2.0	-1.4	+5.4	+37	+67	+101	+80	+33

FERTILITY EBVs	
SS	DTC
+3.8	-3.5

CARCASE EBVs					
CW	EMA	RIB	RUMP	RBV	IMF
+60	+2.2	+1.4	+1.4	+0.4	+1.0

Traits Observed: BWT 200WT 400WT(x2) 600WT(x2) SS FAT EMA IMF Genomics

Kahuna R193 has a lot of growth performance and is in the top 10% of the breed for 600-Day Weight EBV. He is very maternal and his dam, Koanui Regal 7397, is a very good bodied cow with a very good Major P469 calf this year. The sire, Koanui Kahuna 7299, is a sire trait leader for Short Gestation Length EBV. Homozygous Polled.



Purchaser:..... Price: \$.....

LOT 57

KOANUI BROADWAY R298

BORN 01/08/20 HB No. 0216200298P

KOANUI BROADWAY 7292 (P)

- { BEECHWOOD BIG TIME (P)
- { KOANUI LEONORA 4116 (P)

- { BEECHWOOD TURK (P)
- { BEECHWOOD SPOT ON 14 (P)
- { ROTOITI G123 (P)
- { KOANUI LEONORA 0504 (P)

KOANUI LEONORA 3162 (P)

- { KOANUI DISPLAY 0603 (P)
- { KOANUI LEONORA 7104 (P)

- { KOANUI DISPLAY 7214 (P)
- { KOANUI DAINTY 2453 (PBM) (ET) (P)
- { KOANUI CLASS 5292 (P)
- { KOANUI LEONORA 5714 (P)

\$ INDEX VALUES	
Hereford Prime	+\$71
Beef Heifer	+\$53
Dairy Beef	+\$92

CALVING EASE EBVs				GROWTH & MILK EBVs				
CE DIR	CE DTRS	GEST	BWT	200	400	600	MAT	MILK
+1.7	+0.9	+1.0	+4.2	+33	+48	+66	+51	+22

FERTILITY EBVs	
SS	DTC
+1.6	-1.9

CARCASS EBVs					
CW	EMA	RIB	RUMP	RBY	IMF
+39	+2.3	+0.7	+0.8	+0.4	+0.1

Traits Observed: CE BWT 200WT 400WT(x2) 600WT(x2) SS FAT EMA IMF Genomics

Broadway R298 has a nice skin and strong head and eye set. The dam, Koanui Leonora 3162, is a quality middle of the road female that does things right and looks good at rising 9 years of age. Homozygous Polled.



Purchaser:..... Price: \$.....

LOT 58

KOANUI CAPTAIN R430

BORN 06/08/20 HB No. 0216200430P

KOANUI CAPTAIN 7395 (P)

- { KOANUI CAPTAIN 4217 (P)
- { KOANUI ROSE 1413 (GBM) (P)

- { KOANUI CAPTAIN 1464 (P)
- { KOANUI IRANE 2062 (P)
- { KOANUI CHEROKEE 9075 (BM) (P)
- { KOANUI ROSE 9391 (P)

KOANUI GIRLIE 7273 (P)

- { YAVENVALE KAHUNA K115 (IMP AUS) (P)
- { KOANUI GIRLIE 1411 (SBM) (P)

- { CB 57U CAN DOO 102Y (IMP CAN) (P)
- { YAVENVALE LOCHIEL LADY D488 (P) (P)
- { KOANUI CHEROKEE 9075 (BM) (P)
- { KOANUI GIRLIE 9078 (SBM) (P)

\$ INDEX VALUES	
Hereford Prime	+ \$122
Beef Heifer	+ \$193
Dairy Beef	+ \$130

CALVING EASE EBVs				GROWTH & MILK EBVs				
CE DIR	CE DTRS	GEST	BWT	200	400	600	MAT	MILK
+11.4	+5.8	-2.4	+0.9	+32	+46	+75	+51	+23

FERTILITY EBVs	
SS	DTC
+2.7	-3.6

CARCASE EBVs					
CW	EMA	RIB	RUMP	RBY	IMF
+54	+2.5	+1.0	+0.7	+1.2	+0.6

Traits Observed: CE BWT 200WT 400WT(x2) 600WT(x2) SS FAT EMA IMF Genomics

An eye catcher from the start, Captain R430 is a very attractive young herd sire with the cosmetics to match. He is an ideal heifer bull with high calving ease and the quality to breed very good females. In the top 10% of the breed for both Beef Heifer and Dairy Beef \$ Index. Plenty of Benchmark animals in this pedigree. Homozygous Polled.



Purchaser: Price: \$

LOT 59

KOANUI STREAKER R025

BORN 17/07/20 HB No. 0216200025P

OTENGI STREAKER 33 (P)

- { LIMEHILLS STREAKER 150368 (P)
- { OTENGI AMETHYST 1263 (P)

- { LIMEHILLS STARTER 131040 (BM) (P)
- { LIMEHILLS INA 130909 (SBM) (P)
- { OTENGI FULLBACK 565 (P)
- { OTENGI AMETHYST 893 (P)

KOANUI GRACEFUL 5346 (P)

- { KAIRURU INDIA 110045 (P)
- { KOANUI GRACEFUL 9013 (P)

- { NITHDALE ELVIS 040021 (P)
- { KAIRURU LEONORA 050059 (P)
- { LIMEHILLS CHIEFTON 655 (P)
- { KOANUI GRACEFUL 4246 (P)

\$ INDEX VALUES	
Hereford Prime	+\$90
Beef Heifer	+\$70
Dairy Beef	+\$96

CALVING EASE EBVs				GROWTH & MILK EBVs				
CE DIR	CE DTRS	GEST	BWT	200	400	600	MAT	MILK
+1.0	+2.1	-2.3	+1.5	+24	+44	+56	+31	+31

FERTILITY EBVs	
SS	DTC
+0.2	-5.0

CARCASE EBVs					
CW	EMA	RIB	RUMP	RBY	IMF
+40	+4.0	+2.3	+3.0	+0.1	+1.1

Traits Observed: GL CE BWT 200WT 400WT(x2) 600WT(x2) SS FAT EMA IMF Genomics

A very quiet moderate framed bull with plenty of constitution and softness. Ideal for hard country. Homozygous Polled.



Purchaser:..... Price: \$.....

LOT 60

KOANUI KINSIT R645

BORN 25/08/20 HB No. 0216200645P

MATARIKI KINSIT (P)

- MATARIKI 110637 (P)
- MATARIKI VICTORIA 120223 (P)

- MATARIKI JAULIN 080665 (S)
- MATARIKI VICTORIA 070351 (P)
- MATARIKI HERMAN 070400 (P)
- MATARIKI VICTORIA 080691 (P)

KOANUI CYNTHIA 7074 (P)

- KOANUI EXCITEMENT 5024 (P)
- KOANUI CYNTHIA 1112 (P)

- OKAWA MARSHALL 1103 (P)
- KOANUI MINERVA 9079 (P)
- KOANUI GOULBURN 8114 (P)
- KOANUI CYNTHIA 5645 (P)

\$ INDEX VALUES	
Hereford Prime	+\$107
Beef Heifer	+\$93
Dairy Beef	+\$101

CALVING EASE EBVs				GROWTH & MILK EBVs				
CE DIR	CE DTRS	GEST	BWT	200	400	600	MAT	MILK
+1.4	+2.0	-1.5	+2.8	+33	+62	+80	+68	+18

FERTILITY EBVs	
SS	DTC
+2.2	-2.7

CARCASS EBVs					
CW	EMA	RIB	RUMP	RYB	IMF
+59	+4.2	+1.4	+1.9	+0.3	+0.3

Traits Observed: CE BWT 200WT 400WT(x2) 600WT(x2) SS FAT EMA IMF Genomics

What a bull to finish on! Great cosmetics, pedigree and ideal figures for most jobs. Dam, Koanui Cynthia 7074, is one of our best young females and her dam is a donor cow rated in our top 4, herd sire Koanui Midrib 5382's dam. Homozygous Polled.



Purchaser:..... Price: \$.....

LOT 61

KOANUI GLORY R169

BORN 27/07/20 HB No. 0216200169P

KOANUI MAJOR P469 (P)

- MAHUTA MAJOR 6018 (P)
- KOANUI SPIRIT QUEEN 6219 (P)

- LIMEHILLS STARTER 131078 (BM) (P)
- MAHUTA AMETHYST 4036 (P)
- KOANUI BUSTLER 2541 (P)
- KOANUI SPIRIT QUEEN 2308 (P)

KOANUI GLORY P241 (P)

- KOANUI LANCELOT 6436 (P)
- KOANUI GLORY 5141 (P)

- R LEADER 6964 (IMP USA) (BM) (P)
- KOANUI MINERVA 9079 (P)
- KOANUI SPARK 3030 (P)
- KOANUI GLORY 2315 (P)

\$ INDEX VALUES	
Hereford Prime	+\$159
Beef Heifer	+\$168
Dairy Beef	+\$119

CALVING EASE EBVs				GROWTH & MILK EBVs				
CE DIR	CE DTRS	GEST	BWT	200	400	600	MAT	MILK
+3.9	+2.1	-0.1	+3.9	+43	+76	+105	+86	+16

FERTILITY EBVs	
SS	DTC
+3.0	-5.0

CARCASE EBVs					
CW	EMA	RIB	RUMP	RBV	IMF
+70	+1.9	+1.2	+1.6	+0.1	+0.3

Traits Observed: CE BWT 200WT 400WT 600WT Genomics

This heifer has volume and performance plus that lovely balance by remaining feminine. She has softness, a nice soft skin and is very quiet. She is a Koanui Major P469 daughter out of a two year heifer, with an excellent set of figures in the top 5% of the breed for Hereford Prime \$ Index. Her grand-dam, Koanui Glory 5141, is a powerhouse female. PTIC Rock-End Starter 9006, 1243199006. Due July 20 2022.



Purchaser:..... Price: \$.....

LOT 62

KOANUI LYDIA R490

BORN 10/08/20 HB No. 0216200490P

KOANUI MIDRIB 5382 (P)

- OKAWA MARSHALL 1103 (P)
- KOANUI CYNTHIA 1112 (P)

- OKAWA DAVIS 7046 (BM) (P)
- OKAWA AMETHYST 8155 (P)
- KOANUI GOULBURN 8114 (P)
- KOANUI CYNTHIA 5645 (P)

KOANUI LYDIA 7188 (P)

- MAUNGAHINA PLATINUM120173 (P)
- KOANUI LYDIA 9165 (P)

- KOANUI SAFETY 8557 (P)
- MAUNGAHINA AMETHYST 060021 (P)
- KOANUI DISPLAY 5588 (ET) (P)
- KOANUI LYDIA 6019 (P)

\$ INDEX VALUES	
Hereford Prime	+\$66
Beef Heifer	+\$95
Dairy Beef	+\$112

CALVING EASE EBVs				GROWTH & MILK EBVs				
CE DIR	CE DTRS	GEST	BWT	200	400	600	MAT	MILK
+5.5	+2.6	-0.5	+3.0	+31	+53	+80	+78	+22

FERTILITY EBVs	
SS	DTC
+1.9	+0.2

CARCASE EBVs					
CW	EMA	RIB	RUMP	RBY	IMF
+53	+2.2	+0.7	+0.6	+0.2	+0.5

Traits Observed: CE BWT 200WT 400WT 600WT

This female is a ripper! Quality, softness, very correct and she will make an exceptional cow. We can't have enough of the Midrib females, definitely some of the best we have. Koanui Lydia R490 is by the original Midrib 5382. She is a very nice heifer and one Chris would love a herd sire out of. PTIC to Koanui Techno R414, 0216200414. Due July 20 2022.



Purchaser:..... Price: \$.....

LOT 63

KOANUI IRANE R143

BORN 24/07/20 HB No. 0216200143P

KOANUI MAJOR P469 (P)

- MAHUTA MAJOR 6018 (P)
- KOANUI SPIRIT QUEEN 6219 (P)

- LIMEHILLS STARTER 131078 (BM) (P)
- MAHUTA AMETHYST 4036 (P)
- KOANUI BUSTLER 2541 (P)
- KOANUI SPIRIT QUEEN 2308 (P)

KOANUI IRANE 4407 (P)

- KOANUI DISPLAY 2450 (P)
- KOANUI IRANE 1127 (SBM) (P)

- KOANUI DISPLAY 0381 (P)
- KOANUI MINERVA 9079 (P)
- KOANUI ULTIMATE 8086 (BM) (P)
- KOANUI IRANE 9115 (P)

\$ INDEX VALUES	
Hereford Prime	+\$163
Beef Heifer	+\$172
Dairy Beef	+\$119

CALVING EASE EBVs				GROWTH & MILK EBVs				
CE DIR	CE DTRS	GEST	BWT	200	400	600	MAT	MILK
+5.2	+2.2	+2.5	+3.5	+34	+69	+99	+65	+17

FERTILITY EBVs	
SS	DTC
+2.7	-4.5

CARCASE EBVs					
CW	EMA	RIB	RUMP	RBY	IMF
+59	+1.7	+0.6	+0.3	+0.5	+0.4

Traits Observed: GL CE BWT 200WT 400WT 600WT Genomics

The cutting edge of our breeding programme by Koanui Major P469, a key herd sire and this one of his first daughters. We like this heifer so much that we have mated her dam, Koanui Irane 4407, the same way this year. You could not purchase anything more current in our programme than this! Hereford Prime \$ Index in the top 5% of the breed. PTIC to Koanui Marvel R049, 0216200049. Due July 20 2022.



Purchaser:..... Price: \$.....

LOT 64

KOANUI ROSE R185

BORN 27/07/20 HB No. 0216200185P

KOANUI BYLINE 6035 (P)

- { KOANUI BYLINE 4177 (P)
- { KOANUI BLUSH 4419 (P)

- { KOANUI BUSTLER 2040 (P)
- { KOANUI MINERVA 1025 (SBM) (P)
- { KOANUI CRUISE 1270 (P)
- { KOANUI BLUSH 2575 (P)

KOANUI ROSE 5069 (P)

- { KAIRURU INDIA 110045 (P)
- { KOANUI ROSE 9381 (P)

- { NITHDALE ELVIS 040021 (P)
- { KAIRURU LEONORA 050059 (P)
- { KOANUI UNRIVALLED 6345 (P)
- { KOANUI ROSE 4659 (P)

\$ INDEX VALUES	
Hereford Prime	+\$93
Beef Heifer	+\$45
Dairy Beef	+\$94

CALVING EASE EBVs				GROWTH & MILK EBVs				
CE DIR	CE DTRS	GEST	BWT	200	400	600	MAT	MILK
-2.7	+1.1	+1.1	+4.4	+31	+55	+73	+65	+17

FERTILITY EBVs	
SS	DTC
+1.9	-2.0

CARCASS EBVs					
CW	EMA	RIB	RUMP	RYB	IMF
+46	+3.7	+1.7	+2.0	-0.5	+1.7

Traits Observed: CE BWT 200WT 400WT 600WT Genomics

Very docile with depth, style and a very nice show of udder development. Rose R185 has very good carcass data and is in the top 10% of the breed for IMF% EBV. PTIC Rock-End Starter 9006, 1243199006. Due July 20 2022.



Purchaser:..... Price: \$.....

LOT 65

KOANUI CYNTHIA R013

BORN 17/07/20 HB No. 0216200013P

KOANUI MIDRIB P433 (P)

- { KOANUI MIDRIB 5382 (P)
- { KOANUI AMETHYST 8358 (P)

- { OKAWA MARSHALL 1103 (P)
- { KOANUI CYNTHIA 1112 (P)
- { KOANUI BATON 6187 (BM) (P)
- { KOANUI AMETHYST 6077 (P)

KOANUI CYNTHIA P119 (P)

- { YAVENVALE KAHUNA K115 (IMP AUS) (P)
- { KOANUI CYNTHIA 1278 (P)

- { CB 57U CAN DOO 102Y (IMP CAN) (P)
- { YAVENVALE LOCHIEL LADY D488 (P) (P)
- { KOANUI UNRIVALLED 6345 (P)
- { KOANUI CYNTHIA 6065 (P)

\$ INDEX VALUES	
Hereford Prime	+\$89
Beef Heifer	+\$150
Dairy Beef	+\$120

CALVING EASE EBVs				GROWTH & MILK EBVs				
CE DIR	CE DTRS	GEST	BWT	200	400	600	MAT	MILK
+7.1	+6.6	-2.2	+4.0	+40	+61	+89	+83	+23

FERTILITY EBVs	
SS	DTC
+2.0	-1.0

CARCASE EBVs					
CW	EMA	RIB	RUMP	RBY	IMF
+59	+1.1	-0.2	-1.1	+1.0	+0.3

Traits Observed: CE BWT 200WT Genomics

The largest volume, powerhouse female in the offering with good Growth and very high Calving Ease EBVs. By Koanui Midrib P433 out of a two-year heifer, Cynthia R013 has a very interesting mating that has the potential to be a ripper! PTIC Koanui Diamond R326, 0216200326. Due July 20 2022.



Purchaser:..... Price: \$.....

LOT 66

KOANUI CINDY R382

BORN 04/08/20 HB No. 0216200382P

KOANUI MIDRIB P433 (P)

- { KOANUI MIDRIB 5382 (P)
- { KOANUI AMETHYST 8358 (P)

- { OKAWA MARSHALL 1103 (P)
- { KOANUI CYNTHIA 1112 (P)
- { KOANUI BATON 6187 (BM) (P)
- { KOANUI AMETHYST 6077 (P)

KOANUI CINDY P683 (P)

- { KOANUI LEGIT 6444 (P)
- { KOANUI CINDY 5349 (P)

- { R LEADER 6964 (IMP USA) (BM) (P)
- { KOANUI GLORY 0447 (P)
- { CRAIGMORE BARITONE 120305 (P)
- { KOANUI CINDY 1524 (P)

\$ INDEX VALUES	
Hereford Prime	+\$95
Beef Heifer	+\$168
Dairy Beef	+\$129

CALVING EASE EBVs				GROWTH & MILK EBVs				
CE DIR	CE DTRS	GEST	BWT	200	400	600	MAT	MILK
+11.0	+6.9	+0.2	-2.2	+25	+53	+68	+55	+19

FERTILITY EBVs	
SS	DTC
+1.8	-1.8

CARCASE EBVs					
CW	EMA	RIB	RUMP	RYB	IMF
+52	+0.5	+0.4	+0.3	-0.7	+1.1

Traits Observed: CE BWT 200WT 600WT Genomics

We put this heifer up as the low birth, high calving ease specialist with dark cosmetics. By Koanui Midrib P433 and out of a two year heifer who has an outstanding bull calf this year, this is a pedigree loaded with these traits to give you certainty if this is your target market. Cindy R382 is in the top 5% of the breed for Dairy Beef \$ Index. PTIC Koanui Diamond R326, 0216200326. Due July 20 2022.



Purchaser:..... Price: \$.....

LOT 67

KOANUI WILMA R398

BORN 06/08/20 HB No. 0216200398P

KOANUI MIDRIB P433 (P)

- { KOANUI MIDRIB 5382 (P)
- { KOANUI AMETHYST 8358 (P)

- { OKAWA MARSHALL 1103 (P)
- { KOANUI CYNTHIA 1112 (P)
- { KOANUI BATON 6187 (BM) (P)
- { KOANUI AMETHYST 6077 (P)

KOANUI WILMA P232 (P)

- { GRASSMERE GALLANT 152 (P)
- { KOANUI WILMA 4263 (P)

- { MONYMUSK GALLANT 110089 (P)
- { GRASSMERE PRINCESS 826 (P)
- { KOANUI CRUISE 1270 (P)
- { KOANUI WILMA 2594 (P)

\$ INDEX VALUES	
Hereford Prime	+\$110
Beef Heifer	+\$171
Dairy Beef	+\$119

CALVING EASE EBVs				GROWTH & MILK EBVs				
CE DIR	CE DTRS	GEST	BWT	200	400	600	MAT	MILK
+11.2	+7.5	-1.5	+0.3	+24	+41	+57	+34	+16

FERTILITY EBVs	
SS	DTC
+2.0	-2.6

CARCASE EBVs					
CW	EMA	RIB	RUMP	RBY	IMF
+42	+3.3	+1.1	+1.3	+0.5	+0.5

Traits Observed: CE BWT 200WT 600WT Genomics

Not the growth heifer but very soft and easy doing. Ideal cosmetics with a lot of quality and once again by Koanui Midrib P433. Out of a two year heifer, Koanui Wilma R398 is bred for calving ease. Good Beef Heifer and Dairy Heifer \$ Indexes. PTIC to Koanui Legend Q017, 0216190017. Due July 20 2022.



Purchaser:..... Price: \$.....

LOT 68

KOANUI GRACEFUL R428

BORN 06/08/20 HB No. 0216200428P

KOANUI KAHUNA 7299 (P)

- YAVENVALE KAHUNA K115 (IMP AUS) (P)
- KOANUI MINERVA 9079 (P)

- CB 57U CAN DOO 102Y (IMP CAN) (P)
- YAVENVALE LOCHIEL LADY D488 (P) (P)
- KOANUI KOOTENAY 6605 (BM) (P)
- KOANUI MINERVA 6473 (P)

KOANUI GRACEFUL 7183 (P)

- KOANUI XCELORATOR 5088 (BM) (P)
- KOANUI GRACEFUL 9376 (P)

- TRIARA XCELORATOR 594X (IMP CAN) (P)
- KOANUI GLORY 0303 (P)
- SBP JAMAICA 06 0725 (P)
- KOANUI GRACEFUL 5224 (P)

\$ INDEX VALUES	
Hereford Prime	+\$101
Beef Heifer	+\$162
Dairy Beef	+\$121

CALVING EASE EBVs				GROWTH & MILK EBVs				
CE DIR	CE DTRS	GEST	BWT	200	400	600	MAT	MILK
+9.8	+6.3	-1.9	+0.7	+27	+46	+62	+35	+28

FERTILITY EBVs	
SS	DTC
+2.5	-4.2

CARCASS EBVs					
CW	EMA	RIB	RUMP	RYB	IMF
+45	+2.2	+2.4	+2.9	-0.6	+1.1

Traits Observed: CE BWT 200WT 400WT 600WT Genomics

A real eye catcher with those dark eyes, style and high end maternal. By our Short Gestation length trait leader, Koanui Kahuna 7299, these daughters have exceptional udder quality. An interesting and different pedigree, Graceful R428 has great figures all round and she is high in the Beef Heifer and Dairy Heifer \$ Indexes. PTIC to Koanui Major R083, 0216200083. Due July 20 2022.



Purchaser:..... Price: \$.....

LOT 69

KOANUI AMETHYST R313

BORN 01/08/20 HB No. 0216200313P

KOANUI LEGIT P250 (P)

- { KOANUI LEGIT 6444 (P)
- { KOANUI GLORY 0303 (P)

- { R LEADER 6964 (IMP USA) (BM) (P)
- { KOANUI GLORY 0447 (P)
- { KOANUI SPECTRE 8365 (P)
- { KOANUI GLORY 8258 (P)

KOANUI AMETHYST P525 (P)

- { KOANUI PLATINUM 5327 (P)
- { KOANUI AMETHYST 4593 (P)

- { MAUNGAHINA PLATINUM120173 (P)
- { KOANUI AMETHYST 1023 (GBM) (P)
- { KAIRURU INDIA 110045 (P)
- { KOANUI AMETHYST 7040 (P)

\$ INDEX VALUES	
Hereford Prime	+ \$129
Beef Heifer	+ \$174
Dairy Beef	+ \$130

CALVING EASE EBVs				GROWTH & MILK EBVs				
CE DIR	CE DTRS	GEST	BWT	200	400	600	MAT	MILK
+9.9	+2.8	+0.6	+1.9	+29	+59	+73	+51	+21

FERTILITY EBVs	
SS	DTC
+3.5	-4.6

CARCASE EBVs					
CW	EMA	RIB	RUMP	RBY	IMF
+48	+3.4	+1.7	+2.0	-0.2	+1.4

Traits Observed: CE BWT 200WT 400WT 600WT Genomics

Not the biggest heifer but there is real breeding in this pedigree to make a great breeding female. By Koanui Legit P250 out of a two year old heifer, the grand-dam, Koanui Amethyst 4593, is the dam of our Lot 1 bull, R074. Amethyst R313 has a very nice set of figures in the top 15% of the breed for Beef Heifer \$ Index and top 10% for Dairy Heifer \$ Index. We really like this pedigree. PTIC to Koanui Major R175, 0216200175. Due July 27 2022.



Purchaser:..... Price: \$.....

LOT 70

KOANUI BLUSH R163

BORN 26/07/20 HB No. 0216200163P

KOANUI LEGIT P250 (P)

- KOANUI LEGIT 6444 (P)
- KOANUI GLORY 0303 (P)

- R LEADER 6964 (IMP USA) (BM) (P)
- KOANUI GLORY 0447 (P)
- KOANUI SPECTRE 8365 (P)
- KOANUI GLORY 8258 (P)

KOANUI BLUSH P493 (P)

- KOANUI LANCELOT 6436 (P)
- KOANUI BLUSH 5177 (P)

- R LEADER 6964 (IMP USA) (BM) (P)
- KOANUI MINERVA 9079 (P)
- ROTOITI G123 (P)
- KOANUI BLUSH 1379 (P)

\$ INDEX VALUES	
Hereford Prime	+\$107
Beef Heifer	+\$175
Dairy Beef	+\$123

CALVING EASE EBVs				GROWTH & MILK EBVs				
CE DIR	CE DTRS	GEST	BWT	200	400	600	MAT	MILK
+10.9	+6.2	+0.6	+1.0	+29	+52	+68	+49	+22

FERTILITY EBVs	
SS	DTC
+2.9	-3.7

CARCASE EBVs					
CW	EMA	RIB	RUMP	RBY	IMF
+46	+3.0	+1.1	+0.9	+0.4	+0.5

Traits Observed: CE BWT 200WT 600WT Genomics

Another power-house pedigree with the mating potential to breed something special. As with all our female selection it's about how they breed so don't overlook this heifer. By Koanui Legit P250 out of a two year old heifer, Koanui Blush R163 has a very nice set of figures in the top 15% of the breed for both Beef Heifer \$ Index and Dairy Heifer \$ Index. PTIC Koanui Diamond R326, 0216200326. Due July 20 2022.



Purchaser:..... Price: \$.....

LOT 71

KOANUI PLATINUM R267

BORN 31/07/20 HB No. 0216200267P

KOANUI PLATINUM 5327 (P)

- MAUNGAHINA PLATINUM120173 (P)
- KOANUI AMETHYST 1023 (GBM) (P)
- KOANUI SAFETY 8557 (P)
- MAUNGAHINA AMETHYST 060021 (P)
- KOANUI CHEROKEE 9075 (BM) (P)
- KOANUI AMETHYST 9281 (P)

KOANUI PEARL 6213 (P)

- KOANUI INDIA 4226 (P)
- KOANUI PEARL 3127 (P)
- KAIRURU INDIA 110045 (P)
- KOANUI REGAL 0007 (P)
- KOANUI MANSION 0246 (P)
- KOANUI PEARL 8173 (P)

\$ INDEX VALUES	
Hereford Prime	+\$105
Beef Heifer	+\$114
Dairy Beef	+\$114

CALVING EASE EBVs				GROWTH & MILK EBVs				
CE DIR	CE DTRS	GEST	BWT	200	400	600	MAT	MILK
+5.4	+3.1	+2.5	+2.6	+29	+48	+64	+43	+21

FERTILITY EBVs	
SS	DTC
+1.2	-1.7

CARCASE EBVs					
CW	EMA	RIB	RUMP	RBY	IMF
+44	+4.4	+0.9	+0.5	+1.1	+1.3

Traits Observed: BWT 200WT 400WT(x2) 600WT(x2) SS FAT EMA IMF Genomics

NOTES: A heifer bull. Homozygous Polled.

Purchaser:..... Price: \$.....

LOT 72

KOANUI X-RAY R153

BORN 25/07/20 HB No. 0216200153P

KOANUI X-RAY 7078 (P)

- KOANUI XCELORATOR 5088 (BM) (P)
- KOANUI BLUSH 0291 (P)
- TRIARA XCELORATOR 594X (IMP CAN) (P)
- KOANUI GLORY 0303 (P)
- KOANUI BOULDER 7050 (ET) (P)
- KOANUI BLUSH 2195 (SBM) (P)

KOANUI IRANE 9571 (P)

- KOANUI BOULDER 7050 (ET) (P)
- KOANUI IRANE 6153 (P)
- YALGOO BOULDER Z250 (IMP AUS) (P)
- KOANUI BLUSH 1011 (PBM) (P)
- KOANUI SPANIARD 4042 (P)
- KOANUI IRANE 4363 (P)

\$ INDEX VALUES	
Hereford Prime	+\$148
Beef Heifer	+\$150
Dairy Beef	+\$108

CALVING EASE EBVs				GROWTH & MILK EBVs				
CE DIR	CE DTRS	GEST	BWT	200	400	600	MAT	MILK
+3.4	+6.1	-1.0	+3.9	+37	+58	+65	+33	+23

FERTILITY EBVs	
SS	DTC
+2.7	-7.3

CARCASE EBVs					
CW	EMA	RIB	RUMP	RBY	IMF
+45	+3.8	+2.5	+3.4	-0.3	+1.3

Traits Observed: CE BWT 200WT 400WT(x2) 600WT(x2) SS FAT EMA IMF Genomics

NOTES: In the top 10% of the breed for Hereford Prime \$ index. Homozygous Polled.

Purchaser:..... Price: \$.....

LOT 73

KOANUI KINSIT R173

BORN 26/07/20 HB No. 0216200173P

MATARIKI KINSIT (P)

- MATARIKI 110637 (P)
- MATARIKI VICTORIA 120223 (P)

- MATARIKI JAULIN 080665 (S)
- MATARIKI VICTORIA 070351 (P)
- MATARIKI HERMAN 070400 (P)
- MATARIKI VICTORIA 080691 (P)

KOANUI GRACEFUL 7090 (P)

- KOANUI XCELORATOR 5088 (BM) (P)
- KOANUI GRACEFUL 9013 (P)

- TRIARA XCELORATOR 594X (IMP CAN) (P)
- KOANUI GLORY 0303 (P)
- LIMEHILLS CHIEFTON 655 (P)
- KOANUI GRACEFUL 4246 (P)

\$ INDEX VALUES	
Hereford Prime	+\$121
Beef Heifer	+\$118
Dairy Beef	+\$104

CALVING EASE EBVs				GROWTH & MILK EBVs				
CE DIR	CE DTRS	GEST	BWT	200	400	600	MAT	MILK
+1.7	+3.6	+0.9	+5.0	+37	+65	+89	+73	+19

FERTILITY EBVs	
SS	DTC
+2.2	-2.8

CARCASS EBVs					
CW	EMA	RIB	RUMP	RBY	IMF
+59	+4.7	+1.0	+1.0	+1.2	+0.1

Traits Observed: BWT 200WT 400WT(x2) 600WT(x2) SS FAT EMA IMF

NOTES: A balanced Kinsit son. Homozygous Polled.

Purchaser:..... Price: \$.....

LOT 74

KOANUI GIBALTAR R378

BORN 04/08/20 HB No. 0216200378P

KOANUI GIBALTAR P223 (P)

- GRASSMERE GALLANT 152 (P)
- KOANUI GRACEFUL 3159 (P)

- MONYMUSK GALLANT 110089 (P)
- GRASSMERE PRINCESS 826 (P)
- KOANUI CRUISE 1270 (P)
- KOANUI GRACEFUL 1146 (P)

KOANUI ROSE P609 (P)

- KOANUI XCELORATOR 5088 (BM) (P)
- KOANUI ROSE 5304 (P)

- TRIARA XCELORATOR 594X (IMP CAN) (P)
- KOANUI GLORY 0303 (P)
- KOANUI NANO 3167 (P)
- KOANUI ROSE 3086 (P)

\$ INDEX VALUES	
Hereford Prime	+\$118
Beef Heifer	+\$116
Dairy Beef	+\$106

CALVING EASE EBVs				GROWTH & MILK EBVs				
CE DIR	CE DTRS	GEST	BWT	200	400	600	MAT	MILK
+4.3	+2.2	+1.5	+2.7	+32	+61	+73	+47	+20

FERTILITY EBVs	
SS	DTC
+3.4	-3.5

CARCASS EBVs					
CW	EMA	RIB	RUMP	RBY	IMF
+51	+3.7	+0.8	+0.6	+0.7	+0.2

Traits Observed: CE BWT 200WT 400WT(x2) 600WT(x2) SS FAT EMA IMF Genomics

NOTES: A Balanced Gibraltar son out of a two year heifer. Homozygous Polled.

Purchaser:..... Price: \$.....

LOT 75

KOANUI PLATTEN R343

BORN 02/08/20 HB No. 0216200343P

KOANUI PLATINUM 5327 (P)

MAUNGAHINA PLATINUM120173
 { (P)
 KOANUI AMETHYST 1023 (GBM) (P)

{ KOANUI SAFETY 8557 (P)
 MAUNGAHINA AMETHYST 060021 (P)
 KOANUI CHEROKEE 9075 (BM) (P)
 KOANUI AMETHYST 9281 (P)

KOANUI AMETHYST 6105 (P)

{ KOANUI HOOD 3135 (P)
 KOANUI AMETHYST 9281 (P)

{ KOANUI UNANIMOUS 0408 (BM) (P)
 KOANUI LADY REDFIELD 7321 (P)
 KOANUI UNRIVALLED 6345 (P)
 KOANUI AMETHYST 5163 (SBM) (P)

\$ INDEX VALUES	
Hereford Prime	+\$115
Beef Heifer	+\$118
Dairy Beef	+\$107

CALVING EASE EBVs				GROWTH & MILK EBVs				
CE DIR	CE DTRS	GEST	BWT	200	400	600	MAT	MILK
+1.4	+2.1	-0.2	+5.4	+35	+64	+93	+87	+23

FERTILITY EBVs	
SS	DTC
+3.8	-4.5

CARCASE EBVs					
CW	EMA	RIB	RUMP	RBV	IMF
+57	+4.0	+0.3	-0.1	+1.2	+0.5

Traits Observed: CE BWT 200WT 400WT(x2) 600WT(x2) SS FAT EMA IMF Genomics

NOTES: A Balanced son of Koanui Platten 5327 with plenty of Benchmark animals in the pedigree. Homozygous Polled.

Purchaser:..... Price: \$.....

NOTES:



EYE ON THE PREMIUM?

Using NZ Herefords genetics will make your beef herd more profitable, qualifying you for added premiums, and gaining a number of proven, long standing stock performance benefits.

PREMIUM PLUS!

- Processors will pay a premium for NZ Herefords or Hereford^X stock that qualify under processor specifications
- 12% increase in profitability with hybrid vigour
- Hereford cattle rank #1 and 2 for IMF marbling across all the major Angus, Hereford, Simmental Studs across the country*
- Hereford bulls overwhelmingly outperformed Angus Bulls for structural integrity and longevity.*

To purchase a registered Hereford Bull,
talk to your stock agent or visit
www.herefords.co.nz

Hereford ^X
The best of breeds

Breeding Better Business

As part of New Zealand's largest Livestock network, our team of Genetics Specialists have more contacts, more reach and more market influence.

We provide more practical advice and more technical expertise. And, with the country's largest network and most popular sales events, we bring together more buyers and more sellers, delivering more value for all.



fb.com/pgwlivestock
instagram.com/pgwlivestock

If you're looking for a planned approach to success, give us a call today.

Callum Stewart
National Genetics Manager
027 280 2688

Cam Heggie
Upper North Island/
Auctioneer
027 501 8182

Ryan Shannon
Manawatu/Whanganui/
Wairarapa
027 565 0979

Emma Pollitt
Gisborne/Wairoa
027 597 5821

Simon Smith
Hawkes Bay/Wairarapa/
Auctioneer
027 444 0733

John McKone
Upper South Island/
Auctioneer
027 229 9375

Simon Eddington
Canterbury/Upper South
Island
027 590 8612

Callum McDonald
Lower South Island
027 433 6443

Neil Common
Livestock Representative
027 444 8745

Sam Wright
Livestock Representative
027 247 9035



TARARUA BREEDING CENTRE

80541 Masterton Rd, RD 3
Woodville 4999
New Zealand

Ph. +64 6 376 4955

Fax. +64 6 376 4956

Email. office@tararua breedingcentre.co.nz

Web. tararua breedingcentre.co.nz

BBSE - Bull Breeding Soundness Evaluation March 2021

The Gold standard for this test is to collect the bull by an Artificial Vagina and have the semen assessed by a registered morphologist. All bulls that are tested by Tararua Breeding Centre are tested using this Gold Standard.

LIBIDO	Bulls must demonstrate the ability to mount an "in season" heifer or cow.
PENILE SOUNDNESS	Each bull's extended penis is examined during mounting for structural soundness, injuries and abnormalities, including deviations, persistent frenulum's, adhesions, genital warts and injuries that may have occurred while out mating.
SEMEN EVALUATION	Each bull's ejaculate, which is collected in an artificial vagina, is examined microscopically by a registered Morphologist for Density, Motility, Morphology and must pass the minimum standards of 70% normal at the time of testing.

Signed:

Guy Haynes

Bovine Reproduction Consultant

ARTIFICIAL BREEDING SPECIALISTS

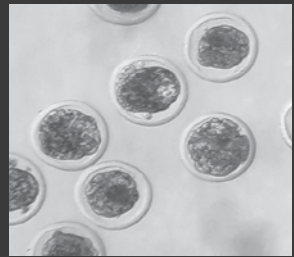
Tararua Breeding Centre is a wholly owned subsidiary of Totally Vets Ltd.



TARARUA BREEDING CENTRE

WE COVER ALL ASPECTS OF REPRODUCTION

On Centre and on farm semen collection
Bull fertility evaluations and fresh collections for AI
AI and ET services
Import/Export of semen/embryos
Pre-export isolation



CONTACT US:

06 376 4955

office@tararuabreedingcentre.co.nz

www.tararuabreedingcentre.co.nz

Cattle, sheep and goat reproductive specialists



Tararua Breeding Centre
Part of Totally Vets Ltd

Catalogue Index - Lot Order

LOT	TAG	HERDBOOK NUMBER	LOT	TAG	HERDBOOK NUMBER
LOT 1	R074	0216200074	LOT 39	R136	0216200136
LOT 2	R072	0216200072	LOT 40		WITHDRAWN
LOT 3	R249	0216200249	LOT 41	R259	0216200259
LOT 4	R181	0216200181	LOT 42	R316	0216200316
LOT 5	R264	0216200264	LOT 43	R012	0216200012
LOT 6	R256	0216200256	LOT 44		WITHDRAWN
LOT 7	R117	0216200117	LOT 45	R271	0216200271
LOT 8	R154	0216200154	LOT 46	R559	0216200559
LOT 9	R268	0216200268	LOT 47	R435	0216200435
LOT 10	R457	0216200457	LOT 48	R506	0216200506
LOT 11	R426	0216200426	LOT 49		WITHDRAWN
LOT 12		WITHDRAWN	LOT 50	R006	0216200006
LOT 13	R030	0216200030	LOT 51	R061	0216200061
LOT 14	R049	0216200049	LOT 52	R536	0216200536
LOT 15	R270	0216200270	LOT 53	R594	0216200594
LOT 16	R404	0216200404	LOT 54	R246	0216200246
LOT 17	R517	0216200517	LOT 55	R029	0216200029
LOT 18	R538	0216200538	LOT 56	R193	0216200193
LOT 19		WITHDRAWN	LOT 57	R298	0216200298
LOT 20		WITHDRAWN	LOT 58	R430	0216200430
LOT 21	R144	0216200144	LOT 59	R025	0216200025
LOT 22	R574	0216200574	LOT 60	R645	0216200645
LOT 23	R158	0216200158	LOT 61	R169	0216200169
LOT 24		WITHDRAWN	LOT 62	R490	0216200490
LOT 25	R359	0216200359	LOT 63	R143	0216200143
LOT 26		WITHDRAWN	LOT 64	R185	0216200185
LOT 27	R531	0216200531	LOT 65	R013	0216200013
LOT 28		WITHDRAWN	LOT 66	R382	0216200382
LOT 29	R215	0216200215	LOT 67	R398	0216200398
LOT 30	R424	0216200424	LOT 68	R428	0216200428
LOT 31	R643	0216200643	LOT 69	R313	0216200313
LOT 32	R683	0216200683	LOT 70	R163	0216200163
LOT 33	R379	0216200379	LOT 71	R267	0216200267
LOT 34	R340	0216200340	LOT 72	R153	0216200153
LOT 35	R145	0216200145	LOT 73	R173	0216200173
LOT 36	R522	0216200522	LOT 74	R378	0216200378
LOT 37	R157	0216200157	LOT 75	R343	0216200343
LOT 38	R189	0216200189			

KOANUI POLLED HEREFORDS Ltd.

Purchaser's Instruction Slip

To be completed by the purchaser at the end of the sale for the vendor's records. Please complete this slip and hand to clerk at completion of sale. * indicates compulsory fields

*NAME: _____

*NAIT NUMBER: _____

ADDRESS: _____

*TELEPHONE: _____

*EMAIL: _____

*DELIVERY DETAILS IF DIFFERENT FROM ABOVE

DELIVERY CONTACT NAME: _____

DELIVERY PHONE: _____

DELIVERY ADDRESS: _____

PURCHASES: Lot No. _____ Price: _____

PURCHASES: Lot No. _____ Price: _____

PURCHASES: Lot No. _____ Price: _____

PURCHASES: Lot No. _____ Price: _____

Please tick this box if you consent to your information being shared between

[insurer name.....], [vendor or organising body.....] and/or the relevant livestock agency, for the purpose of offering you insurance.

TRANSPORT INSTRUCTIONS: _____



I UNDERSTAND THAT I MUST UNDERTAKE TO INSURE MY BULL/S AT THE END OF THE AUCTION. PLEASE CONTACT YOUR OWN INSURANCE COMPANY.

ADDRESS: _____

*STUD HERD No. IF TRANSFER REQUIRED: _____

*NAME OF PURCHASING LIVESTOCK AGENT: _____

*SIGNATURE OF PURCHASER OR AGENT: _____

Date June 16 2022



Conditions of Sale

1. This sale is a “Hybrid online and on farm auction sale.” In addition to the normal on-farm auction format the sale will be hosted by bidr® (www.bidr.co.nz) as a HYBRID auction, with online bidding and a live-stream available on sale day. Note the on-farm auctioneer remains in control of the sale and the fall of the hammer.
All intending ONLINE purchasers must register on bidr® in advance of the sale date, by visiting the website and using the “sign up” button, adding their contact information and nominating the agency they would like to purchase through and account held with that agency. Alternatively, purchasers can organise an agent from one of the agencies listed on bidr® to buy on their behalf.
All intending ON-FARM purchasers must register with the booking clerk prior to commencement of the sale.
2. On behalf of the vendor, PGG Wrightson Ltd (PGW) will pay a purchasing rebate of 6% of the purchase price excluding GST, plus GST, to livestock agents with a PGW Monthly Account. This also applies to Accredited Agencies on bidr® where the buyer has registered on bidr® under that Accredited Agency.
3. All Lots sold exclusive of G.S.T
4. PAYMENT: Fourteen days after the sale.
bidr®’s Conditions of Sale and Terms of Use apply. These terms can be inspected at <https://bidr.co.nz/content/user-terms-conditions>
PGG Wrightson (PGW)’s Monthly Account Terms of Trade also apply to the extent deemed relevant by PGW. The current versions of PGW’s Monthly Account Terms of Trade are also available online at: <https://www.pggwrightson.co.nz/Our-Company/Terms-and-Conditions> or in hardcopy on request.
5. Although all care has been taken in compiling this Catalogue, no responsibility will be taken for any errors or omissions thereof.
6. No warranty will be given with any Lot, and as all Lots are open for inspection prior to the sale, the same are sold with all faults, if any. No compensation shall be made in respect of any fault or error of description of any Lots; however, the vendor reserves the right to make compensation to a buyer if it is the vendor’s wish. It is recommended to inspect bulls before the sale where possible.
7. Every Lot will be at the risk of the purchaser as from the fall of the hammer.
8. **Buyers are advised to insure Bulls.** All Bulls remaining on the property pending delivery should be insured by the Purchaser as no responsibility shall be taken by the Vendor. All bulls are to be uplifted by 1 July, 2022 unless arrangements prior to the sale have been made.
9. ALL STUD BULLS purchased must be uplifted as soon as transport is available. Transfers will be available on Stud Bulls. Please provide Transfer Herd Number(s) to the vendor on the Purchaser’s Slip if a transfer is required.
10. All Bulls have been Service and Semen tested. All bulls are BVD Tested Negative and vaccinated for BVD with Hiprabovis prior to sale.
11. T.B. STATUS C10.

For further information contact:

- The bidr® team is always available to help purchasers get signed up and registered, and the HelpDesk is proudly managed in-house from the Waikato. Please call 0800 TO BIDR (0800 86 2437), or email enquiries@bidr.co.nz for assistance at any point. Alternatively, contact Caitlin Rokela, National Territory Manager, for any enquiries on 0274056156.
- The Auctioneer: Mr Cam Heggie PGG Wrightson Genetics 0275018182
- Your own livestock agent.

Catalogue Index - Tag Order

TAG	LOT	HERDBOOK NUMBER	TAG	LOT	HERDBOOK NUMBER
R006	50	0216200006	R270	15	0216200270
R012	43	0216200012	R271	45	0216200271
R013	65	0216200013	R298	57	0216200298
R025	59	0216200025	WITHDRAWN	24	WITHDRAWN
WITHDRAWN	44	WITHDRAWN	R313	69	0216200313
R029	55	0216200029	R316	42	0216200316
R030	13	0216200030	R340	34	0216200340
R049	14	0216200049	R343	75	0216200343
R061	51	0216200061	R359	25	0216200359
R072	2	0216200072	R378	74	0216200378
R074	1	0216200074	R379	33	0216200379
R117	7	0216200117	R382	66	0216200382
R136	39	0216200136	R398	67	0216200398
R143	63	0216200143	R404	16	0216200404
R144	21	0216200144	R424	30	0216200424
R145	35	0216200145	R426	11	0216200426
R153	72	0216200153	WITHDRAWN	26	WITHDRAWN
R154	8	0216200154	R428	68	0216200428
R157	37	0216200157	R430	58	0216200430
R158	23	0216200158	R435	47	0216200435
R163	70	0216200163	R457	10	0216200457
R169	61	0216200169	R490	62	0216200490
R173	73	0216200173	R506	48	0216200506
R181	4	0216200181	R517	17	0216200517
R185	64	0216200185	R522	36	0216200522
R189	38	0216200189	R531	27	0216200531
R193	56	0216200193	R536	52	0216200536
WITHDRAWN	20	WITHDRAWN	R538	18	0216200538
R215	29	0216200215	R559	46	0216200559
WITHDRAWN	40	WITHDRAWN	WITHDRAWN	19	WITHDRAWN
R246	54	0216200246	R574	22	0216200574
R249	3	0216200249	R594	53	0216200594
R256	6	0216200256	WITHDRAWN	28	WITHDRAWN
R259	41	0216200259	WITHDRAWN	12	WITHDRAWN
WITHDRAWN	49	WITHDRAWN	R643	31	0216200643
R264	5	0216200264	R645	60	0216200645
R267	71	0216200267	R683	32	0216200683
R268	9	0216200268			

We can't wait to see you at the sale!



Gerard Chesterman, Hugh Chesterman, Chris Chesterman, Jennifer Chesterman, Bryar Clayton, Allie Chesterman, Lachie Davidson, Izzy Barbalich and Glen Chesterman.

For more information, or to visit, please contact:

Fred, Chris, Jennifer Chesterman & Family

443 Maraetotara Rd, RD12, Havelock North, 4294

Phone: +64 6874 7844 **Mobile:** +64 27 4777 637

Email: info@koanuiherefords.co.nz

www.koanuiherefords.co.nz