

2023

KOANUI

POLLED HEREFORDS

Building on 50 years!
Est. 1972

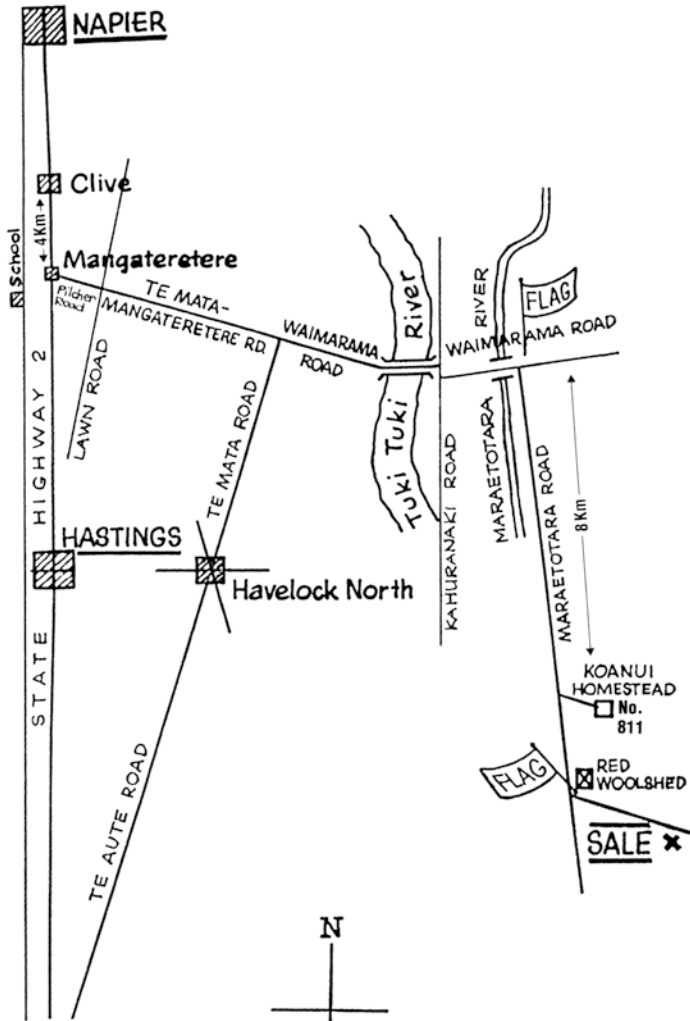


ON FARM AUCTION:
1pm, Thursday 15 June

At 'The Sale Shed'
Past 811 Maraetotara Rd
Havelock North

www.koanuiherefords.co.nz





DD BAY BULLS
 RECOVERY TOURISM AT IT'S FINEST

KOANUI
 POLLED HEREFORDS

Hillmarks Angus
 PURE BRED ANGUS

Max Tweedie: 027 404 5205
 Jen Chesterman: 027 4777 637

KPH | KOANUI POLLED HEREFORDS

Building on 50 years!

ON FARM AUCTION with bidr[®] 1 pm Thursday 15 June

The 2023 Sale is being held on-farm and online by bidr hybrid auction. If possible, we encourage you to view the animals prior to sale. Spark reception and internet will be available on sale day. Contact Koanui or your livestock agent for further information.

- More than 800 stud cows
- Rigorous selection
- Performance recorded
- Bulls semen & service tested
- BVD vaccinated
- TB status C10
- *Satisfaction guaranteed!*

Inspection always welcomed!

OPEN DAY

10:00am - 2:00pm
Thursday 25 May

Or view by prior arrangement

Koanui contacts:

Home phone 06 874 7844
Chris Chesterman 027 488 8635
Jennifer Chesterman 027 477 7637

info@koanuiherefords.co.nz

Follow us on Facebook for updates
www.facebook.com/KoanuiPH/

www.koanuiherefords.co.nz

Agent contacts:

PGG Wrightson

Cam Heggie 027 501 8182
Tom Suttor 027 446 9967
Simon Smith 027 444 0733
Sam Wright 027 247 9035

Carrfields Ltd.

Matt Harvey 027 318 6746

WR Dyer Livestock

Ross Dyer 027 433 3381

Redshaw Livestock Ltd.

Dean Freeman 027 445 1944
Scott Heasley 021 0827 3867

The Koanui Sale 2023

Dear friends and fellow cattle breeders,

There is no better metaphor for the last year than the quality of Feijoas on our garden trees. “Below average” if you ask Allie Chesterman. A mild winter last year has seemingly carried on through to mid-March this year! That said, the rainfall we have experienced has been unprecedented. This, combined with a general lack of sunshine and the devastating effects of Cyclone Gabrielle, has been very challenging for the community.

To those who have been struggling, we are here to support you in any way we can. While we hope you can all come and enjoy our hospitality, we understand this might not be possible. If you are unable to attend the sale in person, we will guarantee your selection with a replacement if your bull doesn't suit your requirements when he arrives. We want to see our clients' programmes succeed, so we will be here to work together to make that happen.

While Koanui itself was relatively unscathed in the Cyclone, our other blocks along the Maraetotara were more severely affected. Not one day during March was spent doing our usual work as we got the farm stock-proofed once again. We consider ourselves fortunate, as other than tracks our primary infrastructure was largely unaffected. The cattle have recovered well and have been enjoying the more settled weather over the last month.



Although most of farm was all right after Cyclone Gabrielle, the hills show the damage.

You may have also heard about ‘Bay Bulls’, our combined sale collaboration with Hallmark Angus. The idea of working with Hallmark Angus is to provide cattle breeders with an excellent opportunity to purchase top genetics from either breed over two days of sales. We hope it will also bring some much-needed tourism back to the Bay as we encourage out of town guests to make the most of Hawkes Bay on their business trip.

Over the last two years we have undergone extensive investment into our breeding herd, and we are seeing exciting results. This investment includes six new New Zealand sires, two new imported sires, and a large increase in our embryo transfer programme. The combination of new genetics and our continued investment in genomics is putting our herd sires at the forefront of the breed. We have continued to cull extensively to prioritise phenotype, soundness, structure, and temperament to produce cattle with longevity that will thrive across diverse environments and breeding programmes.

We would love you to join us on sale day. It’s been a tricky season for all, so we hope you can come and enjoy some fine Hawkes Bay hospitality. We look forward to the opportunity to hosting you and enabling all our farming clients and friends to have a catch up together on sale day.

Kind regards

Chris, Jen, and the Chesterman family



Chris and the bulls have been busy getting ready for the sale.

EBVs Explained

Estimated Breeding Values (EBVs) are estimates of the animal's genetic merit, half of which will be passed onto its progeny. They are expressed in units of measurement for each trait. For more information and EBV Tip sheets refer to <http://breedplan.une.edu.au>

Calving Ease EBVs

CE DIR – Calving Ease Direct % indicates how easily this bull's progeny are likely to be born. A higher figure means a higher likelihood of easy calving.

CE DTRS – % indicates how easily this bull's daughters are likely to calve. A higher figure means a higher likelihood of easy calving in the daughters.

GEST – Gestation Length in days indicates the predicted gestation length relative to average, the lower the value the shorter gestation length of the bull's calves.

BWT – Birth Weight (kg) predicted from analysis of actual birth weight data, the lower the value the smaller the sire's contribution to the weight of the calf at birth.

Growth and Milk EBVs

200 – 200 Day growth EBV (kg) is calculated from the weight of animals taken between 80 and 300 days of age. Values are adjusted to 200 days and for dam age. This EBV is the best single estimate of an animal's genetic merit for growth to early ages.

400 – Day Weight EBV (kg) is calculated from the weight of progeny taken between 301 and 500 days of age, adjusted to 400 days and for dam age. This EBV is the best single estimate of an animal's genetic merit for yearling weight.

600 – 600-Day Weight EBV (kg) is calculated from the weight of progeny taken between 501 and 900 days of age, adjusted to 600 days and for dam age. This EBV is the best single estimate of an animal's genetic merit for growth beyond yearling age.

MAT – Mature Cow Weight EBV (kg) is based on the cow weight when the calf is weighed for weaning, adjusted to 5 years of age. This EBV is an estimate of the genetic difference in cow weight at 5 years of age and is an indicator of growth at later ages and potential feed maintenance requirements of the females in the breeding herd.

MILK – 200-Day Milk EBV (kg) is an estimate of an animal's milking ability. For sires, this EBV is indicative of their daughter's milking ability as it affects the 200 day weight of their calves.

Fertility EBVs

SS - Scrotal Size (cm) is an indicator of male fertility in regards to semen quality and quantity. Higher (positive) EBVs indicate higher fertility. SS is also positively associated with female fertility.

DTC – Days to Calving (days) is an indicator of female fertility. Lower, or more negative, Days to Calving EBVs are generally more favourable reflecting females that get in calf quicker after mating, have early puberty and early return to oestrous after calving.

NZ HEREFORDS Breed Average for 2021 Born Calves

CALVING EASE EBVs			
CE DIR	CE DTRS	GEST	BWT
+2.8	+2.3	-0.8	+3.9

GROWTH & MILK EBVs				
200	400	600	MAT	MILK
+34	+56	+79	+66	+17

FERTILITY	
SS	DTC
+2.2	-3.1

Carcase EBVs

CW - Carcass Weight EBV (kg) estimates the genetic difference in carcass weight at a standard age of 650 days. More positive EBVs indicate heavier carcasses at 650 days of age.

EMA - Eye Muscle Area EBV (cm²) estimates genetic differences in eye muscle area at the 12/13th rib site of a 300kg dressed carcass. More positive EBVs indicate better muscling on animals.

RIB - Rib Fat EBV (mm) estimates the genetic differences in fat depth at the 12/13th rib in a 300kg dressed carcass. More positive EBVs indicate more subcutaneous fat and earlier maturity.

RUMP - Rump Fat EBV (mm) estimates the genetic differences in fat depth at the P8 site on a 300kg dressed carcass. More positive EBVs indicate more subcutaneous fat and earlier maturity. Two fat EBVs are listed as there is variation between animals regarding fat depth at the two sites.

RBV – Retail Beef Yield % EBVs are estimates of genetic differences between animals in boned out retail beef yield in a standard weight steer carcass. RBV EBVs are reported as differences in percentage (%) yield. Larger, more positive, RBV EBVs are generally more favourable.

IMF - Intramuscular Fat % EBVs are estimates of generic difference between animals in intramuscular fat (marbling) at the 12/13 rib site in a 300kg carcass. Larger, more positive, IMF EBVs are generally more favourable.

\$ Index Values

A selection index combines the EBVs with economic information (costs and returns) for specific market and production systems to rank animals based on relative profit values.

Hereford Prime Index - Estimates the genetic differences between animals in net profitability per mixed age cow joined for a typical self-replacing commercial herd. Heifers are retained for breeding and so maternal traits are of importance. Steers target 550 kg live weight (300 kg carcass weight & 7 mm P8 fat) at 20 months of age, and heifers 475 kg (260 kg carcass weight & 8 mm fat depth), at 22 months of age.

Beef Heifer Index - Estimates the genetic differences between animals in net profitability per yearling heifer joined for a typical self-replacing commercial herd. Steers target 510 kg live weight (280 kg HSCW and 7 mm P8 fat depth) and heifers 450 kg (250 kg HSCW and 8 mm P8 fat depth) at 20 months of age.

Dairy Beef Index - Estimates the genetic differences between animals in net profitability per mixed age dairy cow joined with all progeny destined for slaughter. Steers and heifer progeny target 550 kg live weight (300 kg carcass weight and 6 mm fat depth) at 24 months of age and at 475 kg live weight (260 kg carcass weight and 7 mm fat depth) at 22 months, respectively.

The BREEDPLAN Estimated Breeding Values (EBVs) contained within this sale catalogue were compiled by the Agricultural Business Research Institute (ABRI) from the data supplied by breeders. Neither NZ Herefords nor ABRI oversee or audit the collection of this data.

NZ HEREFORDS Breed Average for 2021 Born Calves

CARCASS EBVs					
CW	EMA	RIB	RUMP	RBV	IMF
+53	+3.9	+0.8	+1.0	+0.8	+0.6

\$ INDEX VALUES		
HPrime	Beef Heifer	Dairy Beef
+\$117	+\$126	+\$109

DD
BAY BULLS
DD

KOANUI
POLLED HEREFORDS



RECOVERY TOURISM AT IT'S FINEST

'BIGGER THAN BOLA' – JUNE 15 AND 16

Join us for a high paced winter adventure and maximize your recovery returns by tapping into the full potential of hybrid vigour. We are proud to showcase 125 bulls from two exceptional studs over two days.

Mention "Bay Bulls" to receive a discounted rate on accommodation at Navigate Seaside Hotel. Shuttle service to and from sales provided.

Get in touch for more info:

For enquires please contact
Max Tweedie: 027 404 5205
Jen Chesterman: 027 4777 637

BayBulls.co.nz

HEREFORD BREEDPLAN - PERCENTILE BANDS FOR ALL 2021 BORN ANIMALS

	Calv-Ease				Birth				Growth				Fert				Carcase				Indexes				Extra
	Dir	Dtrs	GL	Bwt	200	400	600	Mwt	Milk	SS	DC	days	Cwt	EMA	Rib	P8	RBY	IMF	HP	BH	DB	Doc	%		
																								200	
High 1%	+12.6	+9.6	-6.9	-1.6	+50	+84	+118	+113	+28	+4.5	-6.6	+80	+7.7	+6.4	+2.1	+2.9	+2.1	+2.4	+178	+245	+141	+47			
High 5%	+10.5	+7.4	-4.4	+0.1	+45	+75	+106	+99	+25	+3.7	-5.6	+71	+6.4	+2.1	+2.9	+2.1	+1.8	+160	+212	+132	+42				
High 10%	+9.1	+6.3	-3.2	+1.0	+42	+71	+100	+91	+23	+3.3	-5.1	+67	+5.8	+1.8	+2.5	+1.8	+1.5	+149	+193	+128	+39				
High 15%	+8.0	+5.6	-2.6	+1.6	+41	+68	+96	+87	+22	+3.0	-4.7	+64	+5.4	+1.6	+2.2	+1.6	+1.3	+143	+181	+125	+37				
High 20%	+7.2	+5.0	-2.2	+2.1	+40	+66	+93	+83	+21	+2.8	-4.4	+62	+5.1	+1.5	+2.0	+1.4	+1.1	+138	+171	+122	+36				
High 25%	+6.4	+4.5	-1.8	+2.5	+38	+64	+90	+80	+20	+2.7	-4.2	+60	+4.8	+1.3	+1.8	+1.3	+1.0	+133	+163	+120	+34				
High 30%	+5.6	+4.0	-1.6	+2.8	+37	+62	+88	+77	+20	+2.6	-4.0	+59	+4.6	+1.2	+1.6	+1.2	+0.9	+129	+155	+118	+33				
High 35%	+4.9	+3.6	-1.3	+3.1	+36	+61	+86	+74	+19	+2.4	-3.7	+57	+4.4	+1.1	+1.5	+1.1	+0.8	+126	+148	+116	+32				
High 40%	+4.2	+3.2	-1.0	+3.5	+36	+59	+83	+72	+18	+2.3	-3.5	+55	+4.2	+1.0	+1.3	+1.0	+0.7	+123	+142	+114	+31				
High 45%	+3.5	+2.7	-0.8	+3.7	+35	+58	+81	+69	+18	+2.2	-3.3	+54	+4.0	+0.9	+1.2	+0.9	+0.7	+119	+135	+112	+30				
50%	+2.9	+2.3	-0.6	+4.0	+34	+56	+79	+67	+17	+2.1	-3.1	+53	+3.8	+0.8	+1.0	+0.8	+0.6	+116	+129	+110	+29				
Low 45%	+2.2	+1.9	-0.4	+4.3	+33	+55	+77	+64	+16	+2.0	-2.9	+51	+3.6	+0.7	+0.9	+0.7	+0.5	+113	+122	+108	+28				
Low 40%	+1.6	+1.5	-0.2	+4.6	+32	+54	+75	+62	+16	+1.9	-2.7	+50	+3.5	+0.6	+0.7	+0.6	+0.4	+110	+115	+106	+26				
Low 35%	+0.9	+1.1	+0.0	+4.9	+31	+52	+73	+59	+15	+1.8	-2.5	+48	+3.3	+0.5	+0.6	+0.5	+0.4	+107	+107	+104	+25				
Low 30%	+0.2	+0.7	+0.3	+5.2	+30	+50	+70	+56	+15	+1.7	-2.3	+47	+3.1	+0.4	+0.4	+0.4	+0.3	+103	+99	+102	+24				
Low 25%	-0.6	+0.2	+0.5	+5.5	+29	+49	+68	+53	+14	+1.6	-2.0	+45	+3.0	+0.3	+0.3	+0.3	+0.2	+99	+90	+99	+22				
Low 20%	-1.4	-0.3	+0.8	+5.8	+28	+47	+65	+49	+13	+1.5	-1.8	+43	+2.8	+0.2	+0.1	+0.2	+0.1	+96	+80	+96	+21				
Low 15%	-2.3	-0.9	+1.1	+6.2	+26	+45	+62	+45	+12	+1.3	-1.5	+41	+2.6	+0.0	-0.1	+0.0	+0.0	+91	+69	+93	+18				
Low 10%	-3.5	-1.6	+1.5	+6.6	+24	+42	+57	+40	+11	+1.1	-1.1	+38	+2.3	-0.2	-0.4	-0.1	-0.1	+85	+55	+89	+16				
Low 5%	-5.3	-2.7	+2.2	+7.3	+22	+37	+51	+32	+10	+0.8	-0.6	+34	+1.9	-0.5	-0.9	-0.4	-0.3	+76	+32	+82	+11				
Low 1%	-9.2	-5.1	+4.0	+8.5	+16	+28	+36	+12	+6	+0.2	+0.3	+24	+1.2	-1.1	-1.8	-0.9	-0.7	+58	-14	+66	-1				

REFERENCE SIRE

OTENGI STREAKER 33

Born 17/08/18

HB No. 0816180033P

LIMEHILLS STREAKER 150368 (BM) (P)

- LIMEHILLS STARTER 131040 (BM) (P)
- LIMEHILLS INA 130909 (SBM) (P)

- LIMEHILLS STAMPER 110429 (BM) (P)
- LIMEHILLS TREND 110503 (P)
- WIRRUNA ECHUCA E99 (IMP AUS) (BM) (P)
- LIMEHILLS INA 110473 (P)

OTENGI AMETHYST 1263 (P)

- OTENGI FULLBACK 565 (P)
- OTENGI AMETHYST 893 (P)

- SQUARE-D FULLBACK 615C (IMP CAN) (P)
- OTENGI AMETHYST P400 (P)
- OKAWA COMMODORE 020076 (BM) (P)
- OTENGI AMETHYST 02 0701 (P)

\$ INDEX VALUES	
Hereford Prime	+\$134
Beef Heifer	+\$113
Dairy Beef	+\$97

APRIL 2023 HEREFORD BREEDPLAN									
CALVING EASE EBVs					GROWTH & MILK EBVs				
CE DIR	CE DTRS	GEST	BWT	200	400	600	MAT	MILK	
-4.8	+6.0	+0.7	+5.6	+41	+72	+105	+82	+32	

FERTILITY EBVs	
SS	DTC
+1.7	-6.6

CARCASS EBVs					
CW	EMA	RIB	RUMP	RBV	IMF
+67	+3.7	+1.8	+2.5	+0.4	+1.0

Traits Observed: GL CE BWT 200WT(x2) 400WT SS DOC Genomics

Purchased as a yearling at Otengi in 2019, this bull is now a proven herd sire who's progeny have impeccable feet, constitution and guts as the fats indicate. A quality bull who is very quiet, in the top of the breed for docility EBV. He is a sire who will be seen in the pedigrees at Koanui as a real asset for years to come.



REFERENCE SIRE**KOANUI KING P438**

Born 09/08/18

HB No. 0216180438P

EARNSCLEUGH KING 155713 (P)

EARNSCLEUGH DUKE 111483 (S)
EARNSCLEUGH CYNTHIA 084784 (P)

SBP DUKE 04 526 (P)
EARNSCLEUGH SAPPHIRE 074251 (SBM) (P)
SOUTH BUKALONG SHANNON 40 (IMP AUS)
ROSELAWN CYNTHIA 926 (P)

KOANUI PEARL 2176 (SBM) (P)

OKAWA BARITONE 9027 (P)
KOANUI PEARL 0510 (P)

OKAWA YODELLOR 5113 (BM) (P)
OKAWA ETHEL 5018 (SBM) (P)
KOANUI DISPLAY 7214 (P)
KOANUI PEARL 6604 (P)

\$ INDEX VALUES	
Hereford Prime	+\$126
Beef Heifer	+\$110
Dairy Beef	+\$110

APRIL 2023 HEREFORD BREEDPLAN									
CALVING EASE EBVs					GROWTH & MILK EBVs				
CE DIR	CE DTRS	GEST	BWT	200	400	600	MAT	MILK	
-2.7	+2.2	+1.8	+6.4	+45	+77	+110	+98	+27	

FERTILITY EBVs	
SS	DTC
+3.2	-4.5

CARCASE EBVs					
CW	EMA	RIB	RUMP	RBV	IMF
+69	+3.0	+1.0	+0.9	-0.1	+1.6

Traits Observed: CE BWT 200WT 400WT(x2) SS FAT EMA IMF Genomics

A Sire Trait Leader for 200, 400 and 600-day Growth EBV, King is also in the top 10% of the breed for IMF% EBV! His dam, Pearl 2176, is a Silver Benchmark Dam and an embryo donor female at Koanui.

REFERENCE SIRE**KOANUI X-RAY 7078**

Born 25/07/17

HB No. 0216177078P

KOANUI XCELERATOR 5088 (BM) (P)

TRIARA XCELERATOR 594X (IMP CAN) (P)
KOANUI GLORY 0303 (P)

TRIARA UNLEASHED 893U (P)
BET-AN 40L NANETTE 23N (P)
KOANUI SPECTRE 8365 (P)
KOANUI GLORY 8258 (P)

KOANUI BLUSH 0291 (P)

KOANUI BOULDER 7050 (ET) (P)
KOANUI BLUSH 2195 (SBM) (P)

YALGOO BOULDER Z250 (IMP AUS) (P)
KOANUI BLUSH 1011 (PBM) (P)
KOANUI BOND 0272 (BM) (P)
KOANUI BLUSH 0037 (SBM) (P)

\$ INDEX VALUES	
Hereford Prime	+\$180
Beef Heifer	+\$229
Dairy Beef	+\$129

APRIL 2023 HEREFORD BREEDPLAN									
CALVING EASE EBVs					GROWTH & MILK EBVs				
CE DIR	CE DTRS	GEST	BWT	200	400	600	MAT	MILK	
+6.4	+6.1	-1.3	+5.1	+49	+82	+106	+72	+26	

FERTILITY EBVs	
SS	DTC
+2.2	-7.1

CARCASE EBVs					
CW	EMA	RIB	RUMP	RBV	IMF
+76	+5.0	+1.9	+2.8	+0.6	+0.4

Traits Observed: GL CE BWT 200WT 400WT(x2) 600WT SS FAT EMA IMF Genomics

X-Ray 7078 is a sire trait leader for 200, 400 and 600-day Growth. He is in the top 5% of the breed for Hereford Prime \$ Index and in the top 10% of the breed for Beef Heifer and Dairy Beef \$ Indexes. The dam's pedigree is full of top quality Benchmark animals and his sire is a top Benchmark sire who is a standout in the breed.

LOT 1

KOANUI STREET KID S174

Born 28/07/21

HB No. 0216210174P

OTENGI STREAKER 33 (P)

- LIMEHILLS STREAKER 150368 (BM) (P)
- OTENGI AMETHYST 1263 (P)

- LIMEHILLS STARTER 131040 (BM) (P)
- LIMEHILLS INA 130909 (SBM) (P)
- OTENGI FULLBACK 565 (P)
- OTENGI AMETHYST 893 (P)

KOANUI TANIA 7593 (P)

- KOANUI HOOD 3135 (P)
- KOANUI TANIA 4543 (P)

- KOANUI UNANIMOUS 0408 (BM) (P)
- KOANUI LADY REDFIELD 7321 (P)
- KOANUI BUSTLER 2396 (P)
- KOANUI TANIA 1248 (P)

\$ INDEX VALUES	
Hereford Prime	+\$113
Beef Heifer	+\$116
Dairy Beef	+\$100

APRIL 2023 HEREFORD BREEDPLAN								
CALVING EASE EBVs				GROWTH & MILK EBVs				
CE DIR	CE DTRS	GEST	BWT	200	400	600	MAT	MILK
+1.8	+6.4	+3.0	+1.9	+23	+48	+61	+42	+26

FERTILITY EBVs	
SS	DTC
+1.6	-7.0

CARCASE EBVs					
CW	EMA	RIB	RUMP	RBY	IMF
+41	+2.5	+1.7	+2.4	-0.5	+1.3

Traits Observed: CE BWT 200WT 400WT 600WT SS FAT EMA IMF Genomics

A very easy keeping bull with plenty of depth on a moderate frame. By Otengi Streaker 33 who has bred very well for us. Ideal for hard country. He has a great temperament and is very easy going.



Purchaser:..... Price: \$.....

LOT 2

KOANUI ENERGIZER S085

Born 21/07/21

HB No. 0216210085P

KOANUI ENERGIZER Q129 (P)

- { KOANUI EXCITEMENT 5024 (P)
- { KOANUI PEARL 2176 (SBM) (P)

- { OKAWA MARSHALL 1103 (P)
- { KOANUI MINERVA 9079 (P)
- { OKAWA BARITONE 9027 (P)
- { KOANUI PEARL 0510 (P)

KOANUI IRANE 6244 (P)

- { KOANUI CHEROKEE 3407 (P)
- { KOANUI IRANE 7019 (P)

- { KOANUI CHEROKEE 9075 (BM) (P)
- { KOANUI BLUSH 0276 (SBM) (P)
- { MAHUTA AXLE (BM) (P)
- { KOANUI IRANE U269 (GBM) (P)

\$ INDEX VALUES	
Hereford Prime	+\$106
Beef Heifer	+\$145
Dairy Beef	+\$122

APRIL 2023 HEREFORD BREEDPLAN								
CALVING EASE EBVs				GROWTH & MILK EBVs				
CE DIR	CE DTRS	GEST	BWT	200	400	600	MAT	MILK
+3.6	+3.2	-1.0	+2.9	+37	+66	+102	+96	+33

FERTILITY EBVs	
SS	DTC
+1.5	-3.3

CARCASS EBVs					
CW	EMA	RIB	RUMP	RBY	IMF
+72	+3.5	+0.1	-0.1	+1.9	+0.5

Traits Observed: GL CE BWT 200WT 400WT 600WT SS FAT EMA IMF Genomics

Energizer S085 has been a standout from a calf. He has strength and muscle but a very correct phenotype, making him a very good bull. He is interesting for being a maternal bull with muscle. He is in the top 10% of the breed for both 400 and 600-day Growth EBVs. Small scurs and Heterozygous Polled.



Purchaser:..... Price: \$.....

LOT 3

KOANUI LEGEND S149

Born 27/07/21

HB No. 0216210149P

KOANUI LEGEND 7109 (P)

- R LEADER 6964 (IMP USA) (BM) (P)
- KOANUI PEARL 8388 (GBM) (P)

- HYALITE ON TARGET 936 (P)
- R MISS REVOLUTION 1009 (P)
- KOANUI BATON 6187 (BM) (P)
- KOANUI PEARL 6107 (P)

KOANUI DAINTY P374 (P)

- KOANUI XCELORATOR 5088 (BM) (P)
- KOANUI DAINTY 5205 (P)

- TRIARA XCELORATOR 594X (IMP CAN) (P)
- KOANUI GLORY 0303 (P)
- KAIRURU INDIA 110045 (P)
- KOANUI DAINTY 0083 (P)

\$ INDEX VALUES	
Hereford Prime	+\$150
Beef Heifer	+\$206
Dairy Beef	+\$129

APRIL 2023 HEREFORD BREEDPLAN								
CALVING EASE EBVs				GROWTH & MILK EBVs				
CE DIR	CE DTRS	GEST	BWT	200	400	600	MAT	MILK
+7.1	+5.0	+0.8	+4.7	+47	+76	+105	+94	+20

FERTILITY EBVs	
SS	DTC
+2.5	-5.8

CARCASS EBVs					
CW	EMA	RIB	RUMP	RBV	IMF
+70	+3.3	+1.9	+2.4	-0.1	+0.5

Traits Observed: CE BWT 200WT 400WT 600WT SS FAT EMA IMF Genomics

The combination of Legend and Xcelerator is a perfect match with birth, calving ease and performance. Legend S149 is beautifully made to have optimal birth and high calving ease which you can appreciate in his phenotype. Dam is a top cow with another cracker calf this year. In the top 10% of the breed for every \$ Index.



Purchaser:..... Price: \$.....

LOT 4

KOANUI GIBRALTAR S508

Born 17/08/21

HB No. 0216210508P

KOANUI GIBRALTAR P223 (P) { GRASSMERE GALLANT 152 (P)
 KOANUI GRACEFUL 3159 (P)

{ MONYMUSK GALLANT 110089 (BM) (P)
 GRASSMERE PRINCESS 826 (P)
 KOANUI CRUISE 1270 (P)
 KOANUI GRACEFUL 1146 (P)

KOANUI CYNTHIA P119 (P) { YAVENVALE KAHUNA K115 (IMP AUS)
 (P)
 KOANUI CYNTHIA 1278 (P)

{ CB 57U CAN DOO 102Y (IMP CAN) (P)
 YAVENVALE LOCHIEL LADY D488 (P) (P)
 KOANUI UNRIVALLED 6345 (P)
 KOANUI CYNTHIA 6065 (P)

\$ INDEX VALUES	
Hereford Prime	+\$141
Beef Heifer	+\$128
Dairy Beef	+\$105

APRIL 2023 HEREFORD BREEDPLAN								
CALVING EASE EBVs				GROWTH & MILK EBVs				
CE DIR	CE DTRS	GEST	BWT	200	400	600	MAT	MILK
+1.2	+3.5	+1.4	+5.0	+37	+60	+83	+57	+21

FERTILITY EBVs	
SS	DTC
+5.2	-5.0

CARCASE EBVs					
CW	EMA	RIB	RUMP	RBY	IMF
+50	+3.6	+0.7	+0.1	+1.4	+0.7

Traits Observed: CE BWT 200WT 400WT 600WT SS FAT EMA IMF Genomics

A very good bull with exceptional length and style. Gibraltar has done a good job with top soundness and docility. Strong in both the fertility traits.



Purchaser:..... Price: \$.....

LOT 5

KOANUI TWENTY S392

Born 10/08/21 HB No. 0216210392P

KOANUI TWENTY P131 (P)

- NJW 78P TWENTYTWELVE 190Z ET (IMP USA) (P)
- KOANUI LEONORA 4116 (P)

- NJW 73S M326 TRUST 100W (IMP USA) (BM) (ET) (P)
- NJW BW LADYSPORT DEW 78P ET (P)
- ROTOITI G123 (P)
- KOANUI LEONORA 0504 (P)

KOANUI AMETHYST 3315 (P)

- KOANUI UNANIMOUS 0408 (BM) (P)
- KOANUI AMETHYST 5218 (P)

- KOANUI UNANIMOUS 7174 (P)
- KOANUI GIRLIE 3048 (SBM) (P)
- KOANUI ARROW 3163 (P)
- KOANUI AMETHYST 3110 (P)

\$ INDEX VALUES	
Hereford Prime	+\$153
Beef Heifer	+\$151
Dairy Beef	+\$115

APRIL 2023 HEREFORD BREEDPLAN								
CALVING EASE EBVs				GROWTH & MILK EBVs				
CE DIR	CE DTRS	GEST	BWT	200	400	600	MAT	MILK
+0.4	+2.7	+0.5	+4.6	+41	+83	+118	+109	+15

FERTILITY EBVs	
SS	DTC
+2.4	-2.6

CARCASS EBVs					
CW	EMA	RIB	RUMP	RBY	IMF
+79	+4.0	+0.0	+0.0	+1.7	+0.1

Traits Observed: CE BWT 200WT 400WT 600WT SS FAT EMA IMF Genomics

Exceptional growth EBVs in the top 5% of the breed for 400 and 600-day Growth and in the top 10% of the breed for Hereford Prime \$ Index. An extremely good bull with length of body and depth. Will breed exceptional numbers.



Purchaser:..... Price: \$.....

LOT 6

KOANUI X-RAY S309

Born 05/08/21

HB No. 0216210309P

KOANUI X-RAY 7078 (P)

- KOANUI XCELORATOR 5088 (BM) (P)
- KOANUI BLUSH 0291 (P)

- TRIARA XCELORATOR 594X (IMP CAN) (P)
- KOANUI GLORY 0303 (P)
- KOANUI BOULDER 7050 (ET) (P)
- KOANUI BLUSH 2195 (SBM) (P)

KOANUI GIRLIE P498 (P)

- KOANUI TECHNO 3062 (BM) (P)
- KOANUI GIRLIE 3182 (P)

- KOANUI UNANIMOUS 0408 (BM) (P)
- KOANUI BLUSH 6455 (P)
- KOANUI ROGER 1581 (P)
- KOANUI GIRLIE 1087 (P)

\$ INDEX VALUES	
Hereford Prime	+\$173
Beef Heifer	+\$196
Dairy Beef	+\$123

APRIL 2023 HEREFORD BREEDPLAN								
CALVING EASE EBVs				GROWTH & MILK EBVs				
CE DIR	CE DTRS	GEST	BWT	200	400	600	MAT	MILK
+1.6	+3.9	-0.8	+7.3	+52	+89	+121	+108	+26

FERTILITY EBVs	
SS	DTC
+4.5	-7.7

CARCASE EBVs					
CW	EMA	RIB	RUMP	RBY	IMF
+80	+5.0	+1.8	+2.6	+0.6	+0.7

Traits Observed: CE BWT 200WT 400WT 600WT SS FAT EMA IMF Genomics

At the top end for performance but still positive for calving ease with a very good shoulder and phenotype. This is a very impressive dataset especially having the carcass and fats with such growth. If you study the pedigree you can see why! In the top 5% of the breed for Hereford Prime \$ Index and the top 10% of the Beef Heifer \$ Index.



Purchaser:..... Price: \$.....

LOT 7**KOANUI GIBRALTAR S293**

Born 05/08/21

HB No. 0216210293P

KOANUI GIBRALTAR P223 (P)

 { GRASSMERE GALLANT 152 (P)
 KOANUI GRACEFUL 3159 (P)

 { MONYMUSK GALLANT 110089 (BM) (P)
 GRASSMERE PRINCESS 826 (P)
 { KOANUI CRUISE 1270 (P)
 KOANUI GRACEFUL 1146 (P)

KOANUI GIRLIE P455 (P)

 { KOANUI EXCITEMENT 5024 (P)
 KOANUI GIRLIE 5255 (P)

 { OKAWA MARSHALL 1103 (P)
 KOANUI MINERVA 9079 (P)
 { BEECHWOOD BIG TIME (P)
 KOANUI GIRLIE 7258 (P)

\$ INDEX VALUES	
Hereford Prime	+\$116
Beef Heifer	+\$92
Dairy Beef	+\$103

APRIL 2023 HEREFORD BREEDPLAN								
CALVING EASE EBVs				GROWTH & MILK EBVs				
CE DIR	CE DTRS	GEST	BWT	200	400	600	MAT	MILK
+0.1	-0.1	-0.6	+3.2	+30	+65	+85	+80	+18

FERTILITY EBVs	
SS	DTC
+2.6	-4.7

CARCASS EBVs					
CW	EMA	RIB	RUMP	RBY	IMF
+56	+3.3	+2.2	+3.0	-0.7	+1.0

Traits Observed: CE BWT 200WT 400WT 600WT SS FAT EMA IMF Genomics

This is one of the most stylish bulls with real neck extension, great shoulder set and adequate carcass. His dam, Koanui Girlie P455, is like him, an eye-catcher and we are very excited about this year's mating with Xcelerator.



Purchaser: Price: \$

LOT 8

KOANUI TECHIE S074

Born 20/07/21 HB No. 0216210074P

KOANUI TECHNO P051 (P)

- KOANUI TECHNO 3062 (BM) (P)
- KOANUI ANGEL 2171 (P)

- KOANUI UNANIMOUS 0408 (BM) (P)
- KOANUI BLUSH 6455 (P)
- KOANUI DISPLAY 0603 (P)
- KOANUI ANGEL 0491 (P)

KOANUI IRANE 2225 (P)

- KOANUI SPARTACUS 9207 (P)
- KOANUI IRANE 0269 (P)

- KOANUI SPY 5054 (ET) (P)
- KOANUI HEATHER 4137 (P)
- KOANUI DISPLAY 7214 (P)
- KOANUI IRANE 5233 (P)

\$ INDEX VALUES	
Hereford Prime	+\$131
Beef Heifer	+\$140
Dairy Beef	+\$121

APRIL 2023 HEREFORD BREEDPLAN								
CALVING EASE EBVs				GROWTH & MILK EBVs				
CE DIR	CE DTRS	GEST	BWT	200	400	600	MAT	MILK
+6.0	-0.9	-1.8	+3.3	+36	+66	+88	+71	+18

FERTILITY EBVs	
SS	DTC
+3.6	-4.7

CARCASS EBVs					
CW	EMA	RIB	RUMP	RBY	IMF
+56	+1.6	+1.5	+1.7	-0.6	+0.9

Traits Observed: GL CE BWT 200WT 400WT 600WT SS FAT EMA IMF Genomics

Plenty of depth and softness and a good balance of birth to growth with calving ease. Techie S074 lost his tail in the fence but certainly has a lot to offer. Dam is a very good cow still here at 11 years of age.



Purchaser:..... Price: \$.....

LOT 9

KOANUI BATON S436

Born 12/08/21

HB No. 0216210436P

OTENGI BATON 484 (P)

- OTENGI BATON 147 (P)
- OTENGI GOLD 206 (P)

- CRAIGMORE BATON 09173 (P)
- OTENGI AMETHYST 1263 (P)
- CRAIGMORE GOLD 11379 (P)
- WAIMAIRE LEONORA 1310 (P)

KOANUI MOONBEAM 7287 (P)

- KOANUI BARITONE 5322 (P)
- KOANUI MOONBEAM 5131 (P)

- CRAIGMORE BARITONE 120305 (P)
- KOANUI GLORY 0494 (P)
- KOANUI CHEROKEE 3285 (P)
- KOANUI MOONBEAM 3377 (P)

\$ INDEX VALUES	
Hereford Prime	+\$137
Beef Heifer	+\$128
Dairy Beef	+\$107

APRIL 2023 HEREFORD BREEDPLAN								
CALVING EASE EBVs				GROWTH & MILK EBVs				
CE DIR	CE DTRS	GEST	BWT	200	400	600	MAT	MILK
+2.0	+0.2	+3.7	+5.6	+32	+63	+91	+75	+21

FERTILITY EBVs	
SS	DTC
+3.0	-6.0

CARCASS EBVs					
CW	EMA	RIB	RUMP	RBY	IMF
+56	+4.1	+1.8	+2.2	+0.7	+0.5

Traits Observed: CE BWT 200WT 400WT 600WT SS FAT EMA IMF Genomics

Baton S436 has a lovely shoulder, great length and outlook. His dataset is very good and his sire did a very good job in the herd. S436 is in the top 20% of the breed for Hereford Prime \$ index.



Purchaser:..... Price: \$.....

LOT 10

KOANUI OROPI S097

Born 22/07/21

HB No. 0216210097P

MAHUTA OROPI 8074 (P)

- GRASSMERE GALLANT 972 (P)
- MAHUTA SUE 3041 (P)

- MONYMUSK GALLANT 110089 (BM) (P)
- GRASSMERE DAISY 328 (P)
- CRAIGMORE GOLD 09258 (P)
- MAHUTA SUE 1085 (P)

KOANUI AMETHYST P306 (P)

- BEECHWOOD DOUBTLESS (P)
- KOANUI AMETHYST 5011 (P)

- BEECHWOOD TURK (P)
- BEECHWOOD SPOT ON 968 (P)
- KOANUI SPARK 3030 (P)
- KOANUI AMETHYST 2095 (P)

\$ INDEX VALUES	
Hereford Prime	+\$128
Beef Heifer	+\$176
Dairy Beef	+\$121

APRIL 2023 HEREFORD BREEDPLAN								
CALVING EASE EBVs				GROWTH & MILK EBVs				
CE DIR	CE DTRS	GEST	BWT	200	400	600	MAT	MILK
+6.5	+4.1	-0.7	+4.2	+38	+72	+94	+97	+18

FERTILITY EBVs	
SS	DTC
+2.1	-5.1

CARCASS EBVs					
CW	EMA	RIB	RUMP	RBV	IMF
+64	+3.2	+0.3	+0.2	+1.2	+0.1

Traits Observed: CE BWT 200WT 400WT 600WT SS FAT EMA IMF Genomics

This is your chance to buy an Oropi son with ideal birth, growth and calving ease! In the top 20% of the breed for Beef Heifer and Dairy Beef \$ Indexes and top 10% for 400-Day Growth EBV. Heterozygous Polled.



Purchaser:..... Price: \$.....

LOT 11

KOANUI KING S155

Born 27/07/21

HB No. 0216210155P

KOANUI KING P438 (P)

- EARNSCLEUGH KING 155713 (P)
- KOANUI PEARL 2176 (SBM) (P)

- EARNSCLEUGH DUKE 111483 (S)
- EARNSCLEUGH CYNTHIA 084784 (P)
- OKAWA BARITONE 9027 (P)
- KOANUI PEARL 0510 (P)

KOANUI DAINTY 4471 (P)

- KOANUI DISPLAY 0381 (P)
- KOANUI DAINTY 1075 (P)

- KOANUI DISPLAY 7214 (P)
- KOANUI BLUSH 5368 (P)
- KOANUI SUPREME U72 (P)
- KOANUI DAINTY T364 (SBM) (P)

\$ INDEX VALUES	
Hereford Prime	+\$111
Beef Heifer	+\$85
Dairy Beef	+\$97

APRIL 2023 HEREFORD BREEDPLAN								
CALVING EASE EBVs				GROWTH & MILK EBVs				
CE DIR	CE DTRS	GEST	BWT	200	400	600	MAT	MILK
-2.0	+1.1	+3.2	+4.8	+39	+69	+98	+87	+22

FERTILITY EBVs	
SS	DTC
+2.8	-4.5

CARCASS EBVs					
CW	EMA	RIB	RUMP	RBY	IMF
+60	+1.4	+0.6	+0.5	-0.2	+0.6

Traits Observed: CE BWT 200WT 400WT 600WT SS FAT EMA IMF Genomics

A powerhouse of a bull with a good back-end and a great set of testicles.



Purchaser:..... Price: \$.....

LOT 12

KOANUI TECHIE S004

Born 14/07/21

HB No. 0216210004P

KOANUI TECHNO P051 (P)

- { KOANUI TECHNO 3062 (BM) (P)
- { KOANUI ANGEL 2171 (P)

- { KOANUI UNANIMOUS 0408 (BM) (P)
- { KOANUI BLUSH 6455 (P)
- { KOANUI DISPLAY 0603 (P)
- { KOANUI ANGEL 0491 (P)

KOANUI CYNTHIA 6088 (P)

- { LAKE J101 (P)
- { KOANUI CYNTHIA 4331 (P)

- { LAKE G114 (P)
- { LAKE CHARM Y20 (P)
- { KAIRURU INDIA 110045 (P)
- { KOANUI CYNTHIA 6099 (P)

\$ INDEX VALUES	
Hereford Prime	+\$125
Beef Heifer	+\$123
Dairy Beef	+\$119

APRIL 2023 HEREFORD BREEDPLAN								
CALVING EASE EBVs				GROWTH & MILK EBVs				
CE DIR	CE DTRS	GEST	BWT	200	400	600	MAT	MILK
+2.0	+1.0	-2.0	+4.2	+37	+68	+88	+75	+24

FERTILITY EBVs	
SS	DTC
+2.4	-4.6

CARCASS EBVs					
CW	EMA	RIB	RUMP	RBV	IMF
+57	+3.5	+2.0	+2.7	-0.9	+2.0

Traits Observed: GL CE BWT 200WT 400WT 600WT SS FAT EMA IMF Genomics

A moderate framed bull that is very easy doing. Techie S004 has a very impressive dataset. His dam is a good cow who has one of the best weaner calves this year.



Purchaser:..... Price: \$.....

LOT 13

KOANUI GALLWAY S057

Born 19/07/21 HB No. 0216210057P

KOANUI GALLWAY Q633 (P)

- GRASSMERE GALLANT 152 (P)
- KOANUI LEONORA 4116 (P)

- MONYMUSK GALLANT 110089 (BM) (P)
- GRASSMERE PRINCESS 826 (P)
- ROTOITI G123 (P)
- KOANUI LEONORA 0504 (P)

KOANUI IRANE 4408 (P)

- KOANUI CHEROKEE 9075 (BM) (P)
- KOANUI IRANE 0597 (P)

- LIMEHILLS CHIEFTON 680 (P)
- KOANUI CYNTHIA U274 (GBM) (P)
- LIMEHILLS BEDFORD 07 902 (P)
- KOANUI IRANE 7005 (ET) (P)

\$ INDEX VALUES	
Hereford Prime	+\$87
Beef Heifer	+\$97
Dairy Beef	+\$107

APRIL 2023 HEREFORD BREEDPLAN								
CALVING EASE EBVs				GROWTH & MILK EBVs				
CE DIR	CE DTRS	GEST	BWT	200	400	600	MAT	MILK
+2.8	+3.9	-0.7	+2.4	+33	+54	+82	+68	+23

FERTILITY EBVs	
SS	DTC
+0.3	-0.7

CARCASS EBVs					
CW	EMA	RIB	RUMP	RBY	IMF
+59	+2.3	+0.1	-0.2	+0.9	+0.3

Traits Observed: GL CE BWT 200WT 400WT 600WT SS FAT EMA IMF Genomics

A strong bull with a good head and jaw. Very functional. His dam, Irane 4408, is a highly productive female who has bred sale bulls for us in the past!



Purchaser:..... Price: \$.....

LOT 14

KOANUI BROADWAY S360

Born 08/08/21 HB No. 0216210360P

KOANUI BROADWAY 7292 (P) {
 BEECHWOOD BIG TIME (P)
 KOANUI LEONORA 4116 (P)

{ BEECHWOOD TURK (P)
 { BEECHWOOD SPOT ON 14 (P)
 { ROTOITI G123 (P)
 { KOANUI LEONORA 0504 (P)

KOANUI CYNTHIA 4646 (P) {
 KOANUI PACER 1396 (P)
 KOANUI CYNTHIA 2198 (P)

{ KOANUI DISPLAY 7214 (P)
 { KOANUI ANGEL 3171 (P)
 { KOANUI ULTIMATE 8086 (BM) (P)
 { KOANUI CYNTHIA 6065 (P)

\$ INDEX VALUES	
Hereford Prime	+\$106
Beef Heifer	+\$135
Dairy Beef	+\$107

APRIL 2023 HEREFORD BREEDPLAN								
CALVING EASE EBVs				GROWTH & MILK EBVs				
CE DIR	CE DTRS	GEST	BWT	200	400	600	MAT	MILK
+4.7	+5.2	-0.7	+3.7	+35	+61	+85	+74	+20

FERTILITY EBVs	
SS	DTC
+3.6	-3.5

CARCASS EBVs					
CW	EMA	RIB	RUMP	RBY	IMF
+58	+2.3	+1.0	+1.5	+0.1	-0.2

Traits Observed: CE BWT 200WT 400WT 600WT SS FAT EMA IMF Genomics

Attractive with length and style. Dam is a very honest, productive and easy keeping female who's progeny will keep any breeder profitable.



Purchaser:..... Price: \$.....

LOT 15

KOANUI STREET KID S415

Born 11/08/21

HB No. 0216210415P

OTENGI STREAKER 33 (P)

- LIMEHILLS STREAKER 150368 (BM) (P)
- OTENGI AMETHYST 1263 (P)

- LIMEHILLS STARTER 131040 (BM) (P)
- LIMEHILLS INA 130909 (SBM) (P)
- OTENGI FULLBACK 565 (P)
- OTENGI AMETHYST 893 (P)

KOANUI LYDIA 7619 (P)

- KOANUI HOOD 3135 (P)
- KOANUI LYDIA 4370 (P)

- KOANUI UNANIMOUS 0408 (BM) (P)
- KOANUI LADY REDFIELD 7321 (P)
- KOANUI ROGER 1581 (P)
- KOANUI LYDIA 2017 (P)

\$ INDEX VALUES	
Hereford Prime	+\$142
Beef Heifer	+\$139
Dairy Beef	+\$110

APRIL 2023 HEREFORD BREEDPLAN								
CALVING EASE EBVs				GROWTH & MILK EBVs				
CE DIR	CE DTRS	GEST	BWT	200	400	600	MAT	MILK
-0.4	+4.0	+1.2	+3.2	+37	+67	+93	+67	+33

FERTILITY EBVs	
SS	DTC
+2.4	-7.7

CARCASE EBVs					
CW	EMA	RIB	RUMP	RBV	IMF
+63	+2.9	+1.9	+2.5	+0.1	+1.2

Traits Observed: CE BWT 200WT 400WT 600WT SS FAT EMA IMF Genomics

Like Lot 1, Street Kid S415 is a testament to the consistency of the breeding of Otengi Streaker 33. He is a very easy keeping bull with a nice set of figures. Ideal for hard country. In the top 20% of the breed for Hereford Prime \$ Index.



Purchaser:..... Price: \$.....

LOT 16

KOANUI KLINGON S132

Born 24/07/21 HB No. 0216210132P

FLAGSTAFF KLINGON P6 (P)

- WIRRUNA LEAP FORWARD L95 (IMP AUS) (BM) (ET) (P)
- FLAGSTAFF MOONBEAM K10 (P)

- KCF BENNETT REVOLUTION X51 (P)
- WIRRUNA MIDGE F322 (P)
- WIRRUNA FLETCHER F214 (IMP AUS) (BM) (P)
- FLAGSTAFF DONS MOONBEAM Y114 (P)

KOANUI GIRLIE 3182 (P)

- KOANUI ROGER 1581 (P)
- KOANUI GIRLIE 1087 (P)

- KOANUI RUSSIA 7012 (P)
- KOANUI DAINTY 2453 (PBM) (ET) (P)
- KOANUI UNRIVALLED 6345 (P)
- KOANUI GIRLIE 2320 (SBM) (P)

\$ INDEX VALUES	
Hereford Prime	+\$129
Beef Heifer	+\$123
Dairy Beef	+\$111

APRIL 2023 HEREFORD BREEDPLAN								
CALVING EASE EBVs				GROWTH & MILK EBVs				
CE DIR	CE DTRS	GEST	BWT	200	400	600	MAT	MILK
+2.0	+3.8	+1.6	+4.0	+37	+59	+75	+66	+16

FERTILITY EBVs	
SS	DTC
+2.5	-4.3

CARCASS EBVs					
CW	EMA	RIB	RUMP	RBY	IMF
+50	+5.0	+1.5	+1.6	+0.2	+1.6

Traits Observed: GL CE BWT 200WT 400WT 600WT SS FAT EMA IMF Genomics

A very smart bull with a great carcass in the top 10% of the breed for IMF%. The dam, Koanui Girlie 3182, has been a very good breeder with three daughters in the herd breeding very well and a top calf this year.



Purchaser:..... Price: \$.....

LOT 17

KOANUI MILTON S420

Born 11/08/21

HB No. 0216210420P

KOANUI MIDRIB P433 (P)

- { KOANUI MIDRIB 5382 (P)
- { KOANUI AMETHYST 8358 (P)

- { OKAWA MARSHALL 1103 (P)
- { KOANUI CYNTHIA 1112 (P)
- { KOANUI BATON 6187 (BM) (P)
- { KOANUI AMETHYST 6077 (P)

KOANUI ROSE P150 (BM) (P)

- { R LEADER 6964 (IMP USA) (BM) (P)
- { KOANUI ROSE 6094 (P)

- { HYALITE ON TARGET 936 (P)
- { R MISS REVOLUTION 1009 (P)
- { KOANUI HOOD 3135 (P)
- { KOANUI ROSE 7015 (P)

\$ INDEX VALUES	
Hereford Prime	+\$189
Beef Heifer	+\$233
Dairy Beef	+\$137

APRIL 2023 HEREFORD BREEDPLAN								
CALVING EASE EBVs				GROWTH & MILK EBVs				
CE DIR	CE DTRS	GEST	BWT	200	400	600	MAT	MILK
+6.6	+5.6	-0.2	+3.7	+41	+73	+107	+77	+20

FERTILITY EBVs	
SS	DTC
+4.7	-5.7

CARCASS EBVs					
CW	EMA	RIB	RUMP	RBY	IMF
+72	+4.6	+2.0	+2.6	+0.2	+1.4

Traits Observed: CE BWT 200WT 400WT 600WT SS FAT EMA IMF Genomics

Milton ticks so many boxes. Combine a superb nature, softness, great skin and ideal cosmetics of a dark, rich red colour – what more could you ask for? Milton is a high growth bull with moderate birth and high calving ease. He is in the top 5% of the breed for every \$ Index and top 1% for Hereford Prime. He was used as a yearling and we have retained semen for within herd use. He has also been collected for a limited release of semen to a commercial dairy client.



Purchaser:..... Price: \$.....

LOT 18

KOANUI COOPER S031

Born 17/07/21

HB No. 0216210031P

NZHA COOPER 18 274 (P)

- LIMEHILLS STREAKER 150368 (BM) (P)
- COLRAINE CYNTHIA 16 229 (P)

- LIMEHILLS STARTER 131040 (BM) (P)
- LIMEHILLS INA 130909 (SBM) (P)
- WAIKAKA SKYTOWER 1329 (P)
- COLRAINE CYNTHIA 14 162 (SBM) (P)

KOANUI AMETHYST 7496 (P)

- BEECHWOOD DOUBTLESS (P)
- KOANUI AMETHYST 3117 (P)

- BEECHWOOD TURK (P)
- BEECHWOOD SPOT ON 968 (P)
- YALGOO BOULDER Z250 (IMP AUS) (P)
- KOANUI AMETHYST 5413 (P)

APRIL 2023 HEREFORD BREEDPLAN								
CALVING EASE EBVs				GROWTH & MILK EBVs				
CE DIR	CE DTRS	GEST	BWT	200	400	600	MAT	MILK
+11.0	+5.6	-1.0	+0.6	+33	+60	+81	+53	+23

\$ INDEX VALUES	
Hereford Prime	+\$134
Beef Heifer	+\$203
Dairy Beef	+\$130

FERTILITY EBVs	
SS	DTC
+0.2	-3.7

CARCASS EBVs					
CW	EMA	RIB	RUMP	RBY	IMF
+62	+3.1	+1.0	+1.7	+1.2	+0.2

Traits Observed: GL CE BWT 200WT 400WT 600WT SS FAT EMA IMF Genomics

Cooper S031 was used as a yearling. He has been a real eye-catcher from a calf and has not disappointed us as he has grown out. He possesses a real sire's outlook, nice head and cosmetics with a lot of softness and depth of body. It is hard to get a bull with the birth so low in combination with real sire appeal and carcass. A Boehringer Ingelheim Dairy Sire who is in the top 10% of the breed for Beef Heifer and Dairy Beef \$ Indexes.



Purchaser:..... Price: \$.....

LOT 19

KOANUI MAGIC S173

Born 28/07/21

HB No. 0216210173P

KOANUI MAJOR P469 (P)

- MAHUTA MAJOR 6018 (P)
- KOANUI SPIRIT QUEEN 6219 (P)

- LIMEHILLS STARTER 131078 (BM) (P)
- MAHUTA AMETHYST 4036 (P)
- KOANUI BUSTLER 2541 (P)
- KOANUI SPIRIT QUEEN 2308 (P)

KOANUI AMETHYST 7433 (P)

- KOANUI XCELERATOR 5088 (BM) (P)
- KOANUI AMETHYST 4445 (P)

- TRIARA XCELERATOR 594X (IMP CAN) (P)
- KOANUI GLORY 0303 (P)
- ROTOITI G123 (P)
- KOANUI AMETHYST 9202 (P)

\$ INDEX VALUES	
Hereford Prime	+\$146
Beef Heifer	+\$195
Dairy Beef	+\$123

APRIL 2023 HEREFORD BREEDPLAN								
CALVING EASE EBVs				GROWTH & MILK EBVs				
CE DIR	CE DTRS	GEST	BWT	200	400	600	MAT	MILK
+11.3	+5.5	+2.1	-0.5	+26	+53	+64	+27	+16

FERTILITY EBVs	
SS	DTC
+1.8	-5.6

CARCASS EBVs					
CW	EMA	RIB	RUMP	RBV	IMF
+48	+1.7	+2.2	+3.1	-0.9	+0.6

Traits Observed: CE BWT 200WT 400WT 600WT SS FAT EMA IMF Genomics

Used as a yearling over heifers, Magic S173 is the ideal bull for that job with very high calving ease and a pedigree that is as safe as houses. You would struggle to get such great EBV's in a bull with such length and a good back-end. His dam has another ripper of a calf this year too. He is a Boehringer Ingelheim Dairy Sire with top \$ Indexes.



Purchaser:..... Price: \$.....

LOT 20

KOANUI MODERATOR S194

Born 29/07/21

HB No. 0216210194P

KOANUI MODERATOR P608 (P)

- KOANUI MIDRIB 5382 (P)
- KOANUI DAINTY 3481 (SBM) (P)

- OKAWA MARSHALL 1103 (P)
- KOANUI CYNTHIA 1112 (P)
- KOANUI UNANIMOUS 0408 (BM) (P)
- KOANUI DAINTY 2453 (PBM) (ET) (P)

KOANUI GRACEFUL Q310 (P)

- WAIOHINE CHARISMA 1601 (P)
- KOANUI GRACEFUL 6409 (P)

- CAPETHORNE 10 34 (P)
- WAIOHINE SUSAN 1450 (P)
- KOANUI CAPTAIN 4217 (P)
- KOANUI GRACEFUL 4161 (P)

\$ INDEX VALUES	
Hereford Prime	+\$122
Beef Heifer	+\$199
Dairy Beef	+\$129

APRIL 2023 HEREFORD BREEDPLAN								
CALVING EASE EBVs				GROWTH & MILK EBVs				
CE DIR	CE DTRS	GEST	BWT	200	400	600	MAT	MILK
+9.4	+6.1	+0.7	+1.3	+32	+62	+89	+75	+26

FERTILITY EBVs	
SS	DTC
+2.2	-4.4

CARCASE EBVs					
CW	EMA	RIB	RUMP	RBY	IMF
+66	+3.4	+0.9	+0.8	+1.1	+0.2

Traits Observed: CE BWT 200WT 400WT(x2) 600WT SS FAT EMA IMF Genomics

It is a real achievement to breed a bull with this set of figures that is this good in phenotype. When you have a bull with barrel, spring of rib, body and back-end and you put that with low birth and high calving ease then he stands out as a real breeder! In the top 10% of the breed for Beef Heifer and Dairy Beef \$ Indexes.



Purchaser:..... Price: \$.....

LOT 21

KOANUI TWENTY S188

Born 30/07/21 HB No. 0216210188P

KOANUI TWENTY P131 (P)

{

NJW 78P TWENTYTWELVE 190Z ET
(IMP USA) (P)

KOANUI LEONORA 4116 (P)

{

NJW 73S M326 TRUST 100W (IMP USA) (BM) (ET) (P)
NJW BW LADYSPORT DEW 78P ET (P)

{

ROTOITI G123 (P)
KOANUI LEONORA 0504 (P)

KOANUI IRANE 7514 (P)

{

BEECHWOOD DOUBTLESS (P)

KOANUI IRANE 2225 (P)

{

BEECHWOOD TURK (P)
BEECHWOOD SPOT ON 968 (P)

{

KOANUI SPARTACUS 9207 (P)
KOANUI IRANE 0269 (P)

\$ INDEX VALUES	
Hereford Prime	+\$122
Beef Heifer	+\$164
Dairy Beef	+\$116

APRIL 2023 HEREFORD BREEDPLAN								
CALVING EASE EBVs				GROWTH & MILK EBVs				
CE DIR	CE DTRS	GEST	BWT	200	400	600	MAT	MILK
+5.8	+4.8	+0.2	+3.4	+35	+68	+95	+95	+16

FERTILITY EBVs	
SS	DTC
+1.9	-3.3

CARCASS EBVs					
CW	EMA	RIB	RUMP	RBY	IMF
+64	+3.5	-0.2	-0.2	+1.6	-0.5

Traits Observed: CE BWT 200WT 400WT(x2) 600WT SS FAT EMA IMF

Power and muscle in a very stout bull with strength. Twenty S188 stands on very good legs and feet. Not the biggest but full of meat with a very strong head and eye set.



Purchaser:..... Price: \$.....

LOT 22

KOANUI LEGEND S400

Born 10/08/21 HB No. 0216210400P

KOANUI LEGEND 7109 (P)

- R LEADER 6964 (IMP USA) (BM) (P)
- KOANUI PEARL 8388 (GBM) (P)

- HYALITE ON TARGET 936 (P)
- R MISS REVOLUTION 1009 (P)
- KOANUI BATON 6187 (BM) (P)
- KOANUI PEARL 6107 (P)

KOANUI AMETHYST P087 (P)

- MAHUTA MAJOR 6018 (P)
- KOANUI AMETHYST 6112 (P)

- LIMEHILLS STARTER 131078 (BM) (P)
- MAHUTA AMETHYST 4036 (P)
- KOANUI HOOD 3135 (P)
- KOANUI AMETHYST 7372 (P)

\$ INDEX VALUES	
Hereford Prime	+\$120
Beef Heifer	+\$209
Dairy Beef	+\$131

APRIL 2023 HEREFORD BREEDPLAN								
CALVING EASE EBVs				GROWTH & MILK EBVs				
CE DIR	CE DTRS	GEST	BWT	200	400	600	MAT	MILK
+10.4	+7.2	+1.5	+2.2	+38	+59	+92	+87	+20

FERTILITY EBVs	
SS	DTC
+1.6	-4.2

CARCASE EBVs					
CW	EMA	RIB	RUMP	RBV	IMF
+62	+1.9	+0.8	+0.6	+0.4	+0.3

Traits Observed: CE BWT 200WT 400WT(x2) 600WT SS FAT EMA IMF Genomics

Another ideal bull for yearling heifer mating with phenotype, performance and his pedigree pulling it all together. On top of this he has the 600-day Growth and maternal characteristics to breed some impressive replacement females. In the top 10% of the breed for Beef Heifer and Dairy Beef \$ Indexes. Heterozygous Polled.



Purchaser:..... Price: \$.....

LOT 23

KOANUI BATON S485

Born 16/08/21 HB No. 0216210485P

OTENGI BATON 484 (P)

- OTENGI BATON 147 (P)
- OTENGI GOLD 206 (P)

- CRAIGMORE BATON 09173 (P)
- OTENGI AMETHYST 1263 (P)
- CRAIGMORE GOLD 11379 (P)
- WAIMAIRE LEONORA 1310 (P)

KOANUI GRACEFUL 4215 (P)

- KOANUI ULTIMATE 2071 (P)
- KOANUI GRACEFUL 2370 (P)

- KOANUI ULTIMATE 8086 (BM) (P)
- KOANUI LYDIA 6019 (P)
- KOANUI UNRIVALLED 6345 (P)
- KOANUI GRACEFUL 8015 (P)

\$ INDEX VALUES	
Hereford Prime	+\$113
Beef Heifer	+\$105
Dairy Beef	+\$103

APRIL 2023 HEREFORD BREEDPLAN								
CALVING EASE EBVs				GROWTH & MILK EBVs				
CE DIR	CE DTRS	GEST	BWT	200	400	600	MAT	MILK
+2.6	+2.2	+0.7	+2.9	+25	+49	+71	+62	+18

FERTILITY EBVs	
SS	DTC
+2.2	-4.9

CARCASS EBVs					
CW	EMA	RIB	RUMP	RBY	IMF
+47	+3.3	+1.8	+2.3	+0.1	+0.8

Traits Observed: CE BWT 200WT 400WT(x2) 600WT SS FAT EMA IMF Genomics

A very attractive bull with great outlook and cosmetic appeal. The figures and phenotype are what we would expect from his breeding.



Purchaser:..... Price: \$.....

LOT 24

KOANUI BROADWAY S539

Born 20/08/21 HB No. 0216210539P

KOANUI BROADWAY 7292 (P) { BEECHWOOD BIG TIME (P)
KOANUI LEONORA 4116 (P)

{ BEECHWOOD TURK (P)
BEECHWOOD SPOT ON 14 (P)
{ ROTOITI G123 (P)
KOANUI LEONORA 0504 (P)

KOANUI IRANE 1127 (SBM) (P) { KOANUI ULTIMATE 8086 (BM) (P)
KOANUI IRANE 9115 (P)

{ KOANUI UNANIMOUS 3152 (BM) (P)
KOANUI CYNTHIA 3501 (P)
{ KOANUI KOOTENAY 6605 (BM) (P)
KOANUI IRANE 6316 (BM) (P)

\$ INDEX VALUES	
Hereford Prime	+\$110
Beef Heifer	+\$61
Dairy Beef	+\$93

APRIL 2023 HEREFORD BREEDPLAN								
CALVING EASE EBVs				GROWTH & MILK EBVs				
CE DIR	CE DTRS	GEST	BWT	200	400	600	MAT	MILK
-6.1	-1.0	-0.4	+6.4	+46	+79	+120	+102	+26

FERTILITY EBVs	
SS	DTC
+3.0	-2.4

CARCASS EBVs					
CW	EMA	RIB	RUMP	RBY	IMF
+76	+2.5	+1.3	+1.7	+0.0	+0.4

Traits Observed: GL CE BWT 200WT 400WT(x2) 600WT SS FAT EMA IMF Genomics

One of the most impressive bulls with body and performance as indicated by the Growth figures. An exceptional bull for crossing to maximise hybrid vigour. You won't be disappointed with this bull's calves. Out of a Silver Benchmark Dam.



Purchaser:..... Price: \$.....

LOT 25

KOANUI STREET KID S630

Born 31/08/21

HB No. 0216210630P

OTENGI STREAKER 33 (P)

- LIMEHILLS STREAKER 150368 (BM) (P)
- OTENGI AMETHYST 1263 (P)

- LIMEHILLS STARTER 131040 (BM) (P)
- LIMEHILLS INA 130909 (SBM) (P)
- OTENGI FULLBACK 565 (P)
- OTENGI AMETHYST 893 (P)

KOANUI DAINTY 7124 (P)

- KOANUI MIDRIB 5382 (P)
- KOANUI DAINTY 5033 (P)

- OKAWA MARSHALL 1103 (P)
- KOANUI CYNTHIA 1112 (P)
- KOANUI UNIVERSAL 3297 (P)
- KOANUI DAINTY 3560 (P)

\$ INDEX VALUES	
Hereford Prime	+\$112
Beef Heifer	+\$105
Dairy Beef	+\$100

APRIL 2023 HEREFORD BREEDPLAN								
CALVING EASE EBVs				GROWTH & MILK EBVs				
CE DIR	CE DTRS	GEST	BWT	200	400	600	MAT	MILK
-0.3	+4.0	+1.8	+4.1	+35	+57	+89	+70	+27

FERTILITY EBVs	
SS	DTC
+1.2	-4.2

CARCASE EBVs					
CW	EMA	RIB	RUMP	RBV	IMF
+59	+3.3	+1.3	+1.5	+0.9	+0.4

Traits Observed: CE BWT 200WT 400WT(x2) 600WT SS FAT EMA IMF Genomics

Street Kid S630 has a lot of appeal with a moderate frame, exceptionally easy doing with a great body and rib. If you are on hard country don't miss this bull.



Purchaser:..... Price: \$.....

LOT 26

KOANUI BROADWAY S674

Born 08/09/21 HB No. 0216210674P

KOANUI BROADWAY 7292 (P) { BEECHWOOD BIG TIME (P)
KOANUI LEONORA 4116 (P)

KOANUI BLUSH 6173 (P) { KOANUI INDIA 4226 (P)
KOANUI BLUSH 3136 (P)

{ BEECHWOOD TURK (P)
BEECHWOOD SPOT ON 14 (P)
{ ROTOITI G123 (P)
KOANUI LEONORA 0504 (P)

{ KAIRURU INDIA 110045 (P)
KOANUI REGAL 0007 (P)
{ KOANUI DISPLAY 0381 (P)
KOANUI BLUSH 8267 (P)

\$ INDEX VALUES	
Hereford Prime	+\$78
Beef Heifer	+\$60
Dairy Beef	+\$89

APRIL 2023 HEREFORD BREEDPLAN								
CALVING EASE EBVs				GROWTH & MILK EBVs				
CE DIR	CE DTRS	GEST	BWT	200	400	600	MAT	MILK
-1.3	+2.6	-0.5	+6.2	+37	+62	+85	+87	+19

FERTILITY EBVs	
SS	DTC
+1.5	-2.2

CARCASS EBVs					
CW	EMA	RIB	RUMP	RBY	IMF
+49	+3.1	+1.3	+1.8	+0.2	+0.0

Traits Observed: GL CE BWT 200WT 400WT(x2) 600WT SS FAT EMA IMF Genomics

Broadway S674 has plenty of length and stretch with a good setup for calving.



Purchaser:..... Price: \$.....

LOT 27

KOANUI KINSIT S635

Born 02/09/21 HB No. 0216210635P

MATARIKI KINSIT (P)

- { MATARIKI 110637 (P)
- { MATARIKI VICTORIA 120223 (P)

- { MATARIKI JAULIN 080665 (S)
- { MATARIKI VICTORIA 070351 (P)
- { MATARIKI HERMAN 070400 (P)
- { MATARIKI VICTORIA 080691 (P)

KOANUI BLUSH 7461 (P)

- { KOANUI CHEROKEE 3407 (P)
- { KOANUI BLUSH 2021 (SBM) (P)

- { KOANUI CHEROKEE 9075 (BM) (P)
- { KOANUI BLUSH 0276 (SBM) (P)
- { WAIMAIRE BOURBON 101 (P)
- { KOANUI BLUSH 8123 (SBM) (P)

APRIL 2023 HEREFORD BREEDPLAN								
CALVING EASE EBVs				GROWTH & MILK EBVs				
CE DIR	CE DTRS	GEST	BWT	200	400	600	MAT	MILK
-1.0	-0.9	+3.5	+4.7	+34	+60	+87	+73	+22

\$ INDEX VALUES	
Hereford Prime	+\$116
Beef Heifer	+\$82
Dairy Beef	+\$99

FERTILITY EBVs	
SS	DTC
+2.8	-4.5

CARCASE EBVs					
CW	EMA	RIB	RUMP	RBY	IMF
+55	+4.2	+1.1	+1.0	+0.9	+0.7

Traits Observed: BWT 200WT 400WT(x2) 600WT SS FAT EMA IMF Genomics

A growth bull with good outlook and presence. Kinsit S635 is bred for performance and would make an ideal terminal sire. Quite a few Benchmark animals in the bottom side of the pedigree.



Purchaser:..... Price: \$.....

LOT 28

KOANUI KING S369

Born 09/08/21 HB No. 0216210369P

KOANUI KING P438 (P)

- EARNSCLEUGH KING 155713 (P)
- KOANUI PEARL 2176 (SBM) (P)

- EARNSCLEUGH DUKE 111483 (S)
- EARNSCLEUGH CYNTHIA 084784 (P)
- OKAWA BARITONE 9027 (P)
- KOANUI PEARL 0510 (P)

KOANUI GLORY 4376 (SBM) (P)

- KOANUI UNANIMOUS 0408 (BM) (P)
- KOANUI GLORY 0212 (P)

- KOANUI UNANIMOUS 7174 (P)
- KOANUI GIRLIE 3048 (SBM) (P)
- KOANUI RUSSIA 7012 (P)
- KOANUI GLORY 2170 (P)

\$ INDEX VALUES	
Hereford Prime	+\$106
Beef Heifer	+\$98
Dairy Beef	+\$97

APRIL 2023 HEREFORD BREEDPLAN								
CALVING EASE EBVs				GROWTH & MILK EBVs				
CE DIR	CE DTRS	GEST	BWT	200	400	600	MAT	MILK
+0.5	+4.2	+2.4	+3.6	+32	+55	+76	+59	+25

FERTILITY EBVs	
SS	DTC
+2.7	-4.8

CARCASS EBVs					
CW	EMA	RIB	RUMP	RBY	IMF
+53	+3.6	+1.4	+1.7	+0.5	+0.5

Traits Observed: CE BWT 200WT 400WT(x2) 600WT SS FAT EMA IMF Genomics

There is a lot to like about this bull. He has a real softness, thickness and an ideal frame for harder country. His brother was a very good bull in last year's sale and the dam is still going strong at 9 years of age. She is a Silver Benchmark Dam.



Purchaser:..... Price: \$.....

LOT 29

KOANUI X-RAY S312

Born 05/08/21

HB No. 0216210312P

KOANUI X-RAY 7078 (P)

- KOANUI XCELORATOR 5088 (BM) (P)
- KOANUI BLUSH 0291 (P)

- TRIARA XCELORATOR 594X (IMP CAN) (P)
- KOANUI GLORY 0303 (P)
- KOANUI BOULDER 7050 (ET) (P)
- KOANUI BLUSH 2195 (SBM) (P)

KOANUI ANGEL P079 (P)

- GRASSMERE GALLANT 152 (P)
- KOANUI ANGEL 3187 (P)

- MONYMUSK GALLANT 110089 (BM) (P)
- GRASSMERE PRINCESS 826 (P)
- KOANUI PACER 1396 (P)
- KOANUI ANGEL 1152 (P)

\$ INDEX VALUES	
Hereford Prime	+\$153
Beef Heifer	+\$162
Dairy Beef	+\$111

APRIL 2023 HEREFORD BREEDPLAN								
CALVING EASE EBVs				GROWTH & MILK EBVs				
CE DIR	CE DTRS	GEST	BWT	200	400	600	MAT	MILK
+3.2	+4.7	-0.6	+4.9	+38	+61	+86	+68	+19

FERTILITY EBVs	
SS	DTC
+2.3	-6.9

CARCASE EBVs					
CW	EMA	RIB	RUMP	RBY	IMF
+57	+4.5	+2.0	+2.6	+0.4	+0.7

Traits Observed: CE BWT 200WT 400WT(x2) 600WT SS FAT EMA IMF Genomics

So quiet and very easy doing, he won't waste energy running around! A very powerful pedigree with the grandsires being two of the best bulls we have used. Dam is a top cow and one that we would like a herd sire out of! X-Ray S312 is in the top 10% of the breed for Hereford Prime \$ Index.



Purchaser:..... Price: \$.....

LOT 30

KOANUI KLINGON S079

Born 20/07/21 HB No. 0216210079P

- FLAGSTAFF KLINGON P6 (P)** { WIRRUNA LEAP FORWARD L95 (IMP AUS) (BM) (ET) (P)
 { FLAGSTAFF MOONBEAM K10 (P)
 { KCF BENNETT REVOLUTION X51 (P)
 { WIRRUNA MIDGE F322 (P)
 { WIRRUNA FLETCHER F214 (IMP AUS) (BM) (P)
 { FLAGSTAFF DONS MOONBEAM Y114 (P)
- KOANUI GIRLIE 4580 (P)** { KOANUI DISPLAY 0381 (P)
 { KOANUI GIRLIE 7258 (P)
 { KOANUI DISPLAY 7214 (P)
 { KOANUI BLUSH 5368 (P)
 { KOANUI SPY 5054 (ET) (P)
 { KOANUI GIRLIE 4141 (P)

\$ INDEX VALUES	
Hereford Prime	+\$135
Beef Heifer	+\$92
Dairy Beef	+\$101

APRIL 2023 HEREFORD BREEDPLAN								
CALVING EASE EBVs				GROWTH & MILK EBVs				
CE DIR	CE DTRS	GEST	BWT	200	400	600	MAT	MILK
-1.9	-0.9	-0.4	+6.3	+48	+79	+100	+79	+18

FERTILITY EBVs	
SS	DTC
+1.8	-3.4

CARCASS EBVs					
CW	EMA	RIB	RUMP	RBY	IMF
+63	+3.9	+0.8	+0.6	+0.9	+0.4

Traits Observed: GL CE BWT 200WT 400WT(x2) 600WT SS FAT EMA IMF Genomics

Klingon S079 is a high growth bull with a good Hereford Prime \$ Index.



Purchaser:..... Price: \$.....

LOT 31

KOANUI KAHUNA S138

Born 25/07/21

HB No. 0216210138P

KOANUI KAHUNA 7299 (P)

- YAVENVALE KAHUNA K115 (IMP AUS) (P)
- KOANUI MINERVA 9079 (P)

- CB 57U CAN DOO 102Y (IMP CAN) (P)
- YAVENVALE LOCHIEL LADY D488 (P) (P)
- KOANUI KOOTENAY 6605 (BM) (P)
- KOANUI MINERVA 6473 (P)

KOANUI AMETHYST 1562 (P)

- KOANUI UNTOUCHABLE 9216 (P)
- KOANUI AMETHYST 9025 (P)

- KOANUI UNRIVALLED 6345 (P)
- KOANUI IRANE 5103 (SBM) (P)
- KAIRURU DEALER 060044 (P)
- KOANUI AMETHYST 7040 (P)

APRIL 2023 HEREFORD BREEDPLAN								
CALVING EASE EBVs				GROWTH & MILK EBVs				
CE DIR	CE DTRS	GEST	BWT	200	400	600	MAT	MILK
-4.4	-0.4	-0.1	+5.3	+41	+64	+96	+78	+32

\$ INDEX VALUES	
Hereford Prime	+\$89
Beef Heifer	+\$48
Dairy Beef	+\$93

FERTILITY EBVs	
SS	DTC
+2.1	-3.2

CARCASS EBVs					
CW	EMA	RIB	RUMP	RBY	IMF
+61	+2.5	+1.4	+1.7	+0.3	+0.8

Traits Observed: GL CE BWT 200WT 400WT(x2) 600WT SS FAT EMA IMF Genomics

A growth bull with some power and strength, very much like his dam who is one of our bigger cows. Heterozygous Polled.



Purchaser:..... Price: \$.....

LOT 32

KOANUI GALLWAY S184

Born 30/07/21 HB No. 0216210184P

KOANUI GALLWAY Q633 (P)

- GRASSMERE GALLANT 152 (P)
- KOANUI LEONORA 4116 (P)

- MONYMUSK GALLANT 110089 (BM) (P)
- GRASSMERE PRINCESS 826 (P)
- ROTOITI G123 (P)
- KOANUI LEONORA 0504 (P)

KOANUI AMETHYST 3301 (P)

- KOANUI UNANIMOUS 0408 (BM) (P)
- KOANUI AMETHYST 5013 (ET) (P)

- KOANUI UNANIMOUS 7174 (P)
- KOANUI GIRLIE 3048 (SBM) (P)
- KOANUI SPY 0062 (P)
- KOANUI AMETHYST T141 (SBM) (P)

\$ INDEX VALUES	
Hereford Prime	+\$104
Beef Heifer	+\$119
Dairy Beef	+\$107

APRIL 2023 HEREFORD BREEDPLAN								
CALVING EASE EBVs				GROWTH & MILK EBVs				
CE DIR	CE DTRS	GEST	BWT	200	400	600	MAT	MILK
+3.6	+2.0	+1.7	+2.8	+35	+66	+90	+88	+20

FERTILITY EBVs	
SS	DTC
+1.5	-2.6

CARCASS EBVs					
CW	EMA	RIB	RUMP	RBV	IMF
+67	+4.0	+0.4	+0.1	+1.9	-0.7

Traits Observed: CE BWT 200WT 400WT(x2) 600WT SS FAT EMA IMF Genomics

This is a very good bull. He has very good Growth and Retail Beef Yield % which is what pays in New Zealand! Out of a herd matriarch with plenty of Benchmark animals in the pedigree.



Purchaser:..... Price: \$.....

LOT 33

KOANUI TWENTY S243

Born 02/08/21 HB No. 0216210243P

KOANUI TWENTY P131 (P)

NJW 78P TWENTYTWELVE 190Z ET
(IMP USA) (P)
K O A N U I L E O N O R A 4 1 1 6 (P)

NJW 73S M326 TRUST 100W (IMP USA) (BM) (ET) (P)
NJW BW LADYSPORT DEW 78P ET (P)
R O T O I T I G 1 2 3 (P)
K O A N U I L E O N O R A 0 5 0 4 (P)

KOANUI GIRLIE 7530 (P)

K O A N U I P L A T I N U M 5 3 2 7 (P)
K O A N U I G I R L I E 5 1 9 5 (P)

M A U N G A H I N A P L A T I N U M 1 2 0 1 7 3 (P)
K O A N U I A M E T H Y S T 1 0 2 3 (G B M) (P)
K O A N U I N A N O 3 1 6 7 (P)
K O A N U I G I R L I E 3 3 4 7 (S B M) (P)

\$ INDEX VALUES	
Hereford Prime	+\$121
Beef Heifer	+\$115
Dairy Beef	+\$103

APRIL 2023 HEREFORD BREEDPLAN								
CALVING EASE EBVs				GROWTH & MILK EBVs				
CE DIR	CE DTRS	GEST	BWT	200	400	600	MAT	MILK
-0.2	+2.0	+1.7	+6.2	+41	+74	+108	+110	+15

FERTILITY EBVs	
SS	DTC
+2.7	-2.6

CARCASS EBVs					
CW	EMA	RIB	RUMP	RBY	IMF
+65	+3.8	-0.4	-0.8	+2.1	-0.6

Traits Observed: CE BWT 200WT 400WT(x2) 600WT SS FAT EMA IMF Genomics

An ideal crossing bull for mature cows. S243 will breed tremendous weaners with heaps of hybrid vigour. He has exceptional length! He is in the top 10% of the breed for 400 and 600-day growth EBVs.



Purchaser:..... Price: \$.....

LOT 34

KOANUI GALLWAY S140

Born 25/07/21 HB No. 0216210140P

KOANUI GALLWAY Q633 (P)

- GRASSMERE GALLANT 152 (P)
- KOANUI LEONORA 4116 (P)

- MONYMUSK GALLANT 110089 (BM) (P)
- GRASSMERE PRINCESS 826 (P)
- ROTOITI G123 (P)
- KOANUI LEONORA 0504 (P)

KOANUI GIRLIE 2521 (P)

- KOANUI GOULBURN 8114 (P)
- KOANUI GIRLIE 8178 (P)

- WIRANYA GOULBURN (IMP AUS) (P)
- KOANUI AMETHYST 2432 (P)
- OKAWA ADMIRAL 5021 (BM) (P)
- KOANUI GIRLIE 4595 (P)

\$ INDEX VALUES	
Hereford Prime	+\$95
Beef Heifer	+\$103
Dairy Beef	+\$100

APRIL 2023 HEREFORD BREEDPLAN								
CALVING EASE EBVs				GROWTH & MILK EBVs				
CE DIR	CE DTRS	GEST	BWT	200	400	600	MAT	MILK
+3.8	+4.2	+1.7	+3.9	+33	+56	+71	+64	+16

FERTILITY EBVs	
SS	DTC
+3.2	-2.9

CARCASS EBVs					
CW	EMA	RIB	RUMP	RBV	IMF
+49	+2.7	+0.7	+0.6	+0.3	+0.1

Traits Observed: GL CE BWT 200WT 400WT(x2) 600WT SS FAT EMA IMF Genomics

A very good crossing bull so look past the cosmetic patches and appreciate the body and back-end with a balance of performance on very good feet and legs. A strong maternal cow is behind this bull.



Purchaser:..... Price: \$.....

LOT 35

KOANUI STREET KID S484

Born 15/08/21

HB No. 0216210484P

OTENGI STREAKER 33 (P)

- LIMEHILLS STREAKER 150368 (BM) (P)
- OTENGI AMETHYST 1263 (P)

- LIMEHILLS STARTER 131040 (BM) (P)
- LIMEHILLS INA 130909 (SBM) (P)
- OTENGI FULLBACK 565 (P)
- OTENGI AMETHYST 893 (P)

KOANUI CINDY 6119 (BM) (P)

- KOANUI TECHNO 3062 (BM) (P)
- KOANUI CINDY 1524 (P)

- KOANUI UNANIMOUS 0408 (BM) (P)
- KOANUI BLUSH 6455 (P)
- KOANUI CAPTAIN 8624 (P)
- KOANUI CINDY 8278 (P)

\$ INDEX VALUES	
Hereford Prime	+\$133
Beef Heifer	+\$118
Dairy Beef	+\$104

APRIL 2023 HEREFORD BREEDPLAN								
CALVING EASE EBVs				GROWTH & MILK EBVs				
CE DIR	CE DTRS	GEST	BWT	200	400	600	MAT	MILK
-2.7	+4.6	+3.0	+5.9	+41	+72	+103	+90	+25

FERTILITY EBVs	
SS	DTC
+2.5	-5.3

CARCASS EBVs					
CW	EMA	RIB	RUMP	RBY	IMF
+66	+3.3	+1.2	+1.5	+0.4	+1.2

Traits Observed: GL CE BWT 200WT 400WT(x2) 600WT SS FAT EMA IMF Genomics

A quality bull with barrel, performance and meat with softness and a great nature. The pedigree, phenotype and figures all express what we would expect so no breeding surprises here! Out of a benchmark dam.



Purchaser:..... Price: \$.....

LOT 36

KOANUI OROPI S386

Born 09/08/21 HB No. 0216210386P

MAHUTA OROPI 8074 (P)

- GRASSMERE GALLANT 972 (P)
- MAHUTA SUE 3041 (P)

- MONYMUSK GALLANT 110089 (BM) (P)
- GRASSMERE DAISY 328 (P)
- CRAIGMORE GOLD 09258 (P)
- MAHUTA SUE 1085 (P)

KOANUI CYNTHIA P686 (P)

- KOANUI INDIA 4226 (P)
- KOANUI CYNTHIA 1112 (P)

- KAIRURU INDIA 110045 (P)
- KOANUI REGAL 0007 (P)
- KOANUI GOULBURN 8114 (P)
- KOANUI CYNTHIA 5645 (P)

\$ INDEX VALUES	
Hereford Prime	+\$132
Beef Heifer	+\$146
Dairy Beef	+\$116

APRIL 2023 HEREFORD BREEDPLAN								
CALVING EASE EBVs				GROWTH & MILK EBVs				
CE DIR	CE DTRS	GEST	BWT	200	400	600	MAT	MILK
+4.4	+3.2	+0.9	+3.0	+35	+62	+83	+64	+22

FERTILITY EBVs	
SS	DTC
+2.5	-4.5

CARCASS EBVs					
CW	EMA	RIB	RUMP	RBY	IMF
+60	+3.8	+0.8	+0.8	+0.8	+0.8

Traits Observed: BWT 200WT 400WT(x2) 600WT SS FAT EMA IMF Genomics

A sale feature, some bulls have stand-out presence and style and just seem to know that they are good! Oropi S386 is one of those special bulls. He has wonderful balance, depth, and cosmetic appeal. He is quiet but still stands with that great outlook. This is a top notch pedigree with the maternal grand-dam, Koanui Cynthia 1112, a donor cow and one of the best at Koanui. His sire has excelled in his contribution here. We have retained another Oropi son, Koanui Transformer S560, who is another knock-out! Semen to be retained for within-herd use.



Purchaser:..... Price: \$.....

LOT 37

KOANUI BACHELOR S104

Born 22/07/21

HB No. 0216210104P

KOANUI BACHELOR Q154 (P)

- OTENGI BATON 484 (P)
- KOANUI CYNTHIA 6427 (P)

- OTENGI BATON 147 (P)
- OTENGI GOLD 206 (P)
- KOANUI CHEROKEE 3407 (P)
- KOANUI CYNTHIA 1294 (P)

KOANUI ANGEL 5480 (P)

- KOANUI CHEROKEE 3407 (P)
- KOANUI ANGEL 3121 (P)

- KOANUI CHEROKEE 9075 (BM) (P)
- KOANUI BLUSH 0276 (SBM) (P)
- KOANUI DISPLAY 0381 (P)
- KOANUI ANGEL 5466 (P)

\$ INDEX VALUES	
Hereford Prime	+\$135
Beef Heifer	+\$130
Dairy Beef	+\$116

APRIL 2023 HEREFORD BREEDPLAN								
CALVING EASE EBVs				GROWTH & MILK EBVs				
CE DIR	CE DTRS	GEST	BWT	200	400	600	MAT	MILK
+3.6	+0.1	+4.3	+4.9	+32	+61	+83	+61	+22

FERTILITY EBVs	
SS	DTC
+3.1	-5.2

CARCASS EBVs					
CW	EMA	RIB	RUMP	RBY	IMF
+52	+4.1	+2.0	+2.6	-0.3	+1.5

Traits Observed: GL CE BWT 200WT 400WT(x2) 600WT SS FAT EMA IMF Genomics

A maternal bull with calving ease and carcass. The dam, Angel 5480, is still going strong with the Cherokee females doing very well and Benchmark Dams in the pedigree.



Purchaser:..... Price: \$.....

LOT 38

KOANUI OROPI S222

Born 01/08/21 HB No. 0216210222P

MAHUTA OROPI 8074 (P)

- GRASSMERE GALLANT 972 (P)
- MAHUTA SUE 3041 (P)

- MONYMUSK GALLANT 110089 (BM) (P)
- GRASSMERE DAISY 328 (P)
- CRAIGMORE GOLD 09258 (P)
- MAHUTA SUE 1085 (P)

KOANUI CINDY P683 (P)

- KOANUI LEGIT 6444 (P)
- KOANUI CINDY 5349 (P)

- R LEADER 6964 (IMP USA) (BM) (P)
- KOANUI GLORY 0447 (P)
- CRAIGMORE BARITONE 120305 (P)
- KOANUI CINDY 1524 (P)

\$ INDEX VALUES	
Hereford Prime	+\$134
Beef Heifer	+\$169
Dairy Beef	+\$122

APRIL 2023 HEREFORD BREEDPLAN								
CALVING EASE EBVs				GROWTH & MILK EBVs				
CE DIR	CE DTRS	GEST	BWT	200	400	600	MAT	MILK
+7.0	+1.9	+2.4	+2.3	+35	+70	+94	+89	+16

FERTILITY EBVs	
SS	DTC
+3.8	-4.2

CARCASS EBVs					
CW	EMA	RIB	RUMP	RBY	IMF
+65	+3.6	+0.1	-0.1	+1.3	-0.1

Traits Observed: CE BWT 200WT 400WT(x2) 600WT SS FAT EMA IMF Genomics

Another Oropi son and just as good. Exceptional length, very quiet and he will really stamp his mark with that wonderful rich red colour and strong pigment. It is a pleasure to put up bulls of this calibre who tick a lot of performance boxes and yet have all important calving ease.



Purchaser:..... Price: \$.....

LOT 39

KOANUI TWENTY S621

Born 30/08/21

HB No. 0216210621P

KOANUI TWENTY P131 (P)

{ NJW 78P TWENTYTWELVE 190Z ET
(IMP USA) (P)
KOANUI LEONORA 4116 (P)

{ NJW 73S M326 TRUST 100W (IMP USA) (BM) (ET) (P)
NJW BW LADYSPORT DEW 78P ET (P)
ROTOITI G123 (P)
KOANUI LEONORA 0504 (P)

KOANUI GIRLIE 6194 (P)

{ KOANUI CAPTAIN 4217 (P)
KOANUI GIRLIE 4251 (P)

{ KOANUI CAPTAIN 1464 (P)
KOANUI IRANE 2062 (P)
ROTOITI G123 (P)
KOANUI GIRLIE 0601 (P)

\$ INDEX VALUES	
Hereford Prime	+\$116
Beef Heifer	+\$124
Dairy Beef	+\$106

APRIL 2023 HEREFORD BREEDPLAN								
CALVING EASE EBVs				GROWTH & MILK EBVs				
CE DIR	CE DTRS	GEST	BWT	200	400	600	MAT	MILK
+1.3	+3.6	+1.3	+4.1	+36	+74	+102	+96	+19

FERTILITY EBVs	
SS	DTC
+3.3	-2.5

CARCASS EBVs					
CW	EMA	RIB	RUMP	RBV	IMF
+66	+3.2	-0.2	-0.4	+1.4	-0.4

Traits Observed: CE BWT 200WT 400WT(x2) 600WT SS FAT EMA IMF Genomics

This bull has a lot of growth performance as his EBV's suggest. In the top 10% of the breed for 400 and 600-day Growth EBVs.



Purchaser:..... Price: \$.....

LOT 40

KOANUI GIBRALTAR S507

Born 17/08/21 HB No. 0216210507P

KOANUI GIBRALTAR P223 (P) { GRASSMERE GALLANT 152 (P)
KOANUI GRACEFUL 3159 (P)

{ MONYMUSK GALLANT 110089 (BM) (P)
GRASSMERE PRINCESS 826 (P)
{ KOANUI CRUISE 1270 (P)
KOANUI GRACEFUL 1146 (P)

KOANUI IRANE P176 (P) { KOANUI HOOD 3135 (P)
KOANUI IRANE 0179 (P)

{ KOANUI UNANIMOUS 0408 (BM) (P)
KOANUI LADY REDFIELD 7321 (P)
{ KOANUI UNRIVALLED 6345 (P)
KOANUI IRANE 138 (P)

\$ INDEX VALUES	
Hereford Prime	+\$131
Beef Heifer	+\$142
Dairy Beef	+\$104

APRIL 2023 HEREFORD BREEDPLAN								
CALVING EASE EBVs				GROWTH & MILK EBVs				
CE DIR	CE DTRS	GEST	BWT	200	400	600	MAT	MILK
+3.8	+6.1	+1.8	+2.2	+25	+54	+70	+61	+14

FERTILITY EBVs	
SS	DTC
+3.5	-5.5

CARCASS EBVs					
CW	EMA	RIB	RUMP	RBV	IMF
+47	+3.8	+1.3	+1.7	+0.6	+0.3

Traits Observed: CE BWT 200WT 400WT(x2) 600WT SS FAT EMA IMF Genomics

A real eye catcher in the paddock with a smooth dark coat, strong pigment and length of body. There are some top quality females in the back of this pedigree and plenty of fertility in the breeding as seen in the very high scrotal size and short days to calving EBVs, both in the top 10% of the breed. This bull has a nice balance of figures and more growth than indicated.



Purchaser:..... Price: \$.....

LOT 41

KOANUI BATON S567

Born 23/08/21 HB No. 0216210567P

OTENGI BATON 484 (P)

- OTENGI BATON 147 (P)
- OTENGI GOLD 206 (P)

- CRAIGMORE BATON 09173 (P)
- OTENGI AMETHYST 1263 (P)
- CRAIGMORE GOLD 11379 (P)
- WAIMAIRE LEONORA 1310 (P)

KOANUI ROSE 7351 (P)

- YAVENVALE KAHUNA K115 (IMP AUS) (P)
- KOANUI ROSE 7015 (P)

- CB 57U CAN DOO 102Y (IMP CAN) (P)
- YAVENVALE LOCHIEL LADY D488 (P) (P)
- KOANUI CLASS 5292 (P)
- KOANUI ROSE 5407 (SBM) (P)

\$ INDEX VALUES	
Hereford Prime	+\$116
Beef Heifer	+\$144
Dairy Beef	+\$115

APRIL 2023 HEREFORD BREEDPLAN								
CALVING EASE EBVs				GROWTH & MILK EBVs				
CE DIR	CE DTRS	GEST	BWT	200	400	600	MAT	MILK
+5.7	+2.8	-2.8	+3.5	+31	+54	+81	+70	+23

FERTILITY EBVs	
SS	DTC
+2.4	-5.5

CARCASS EBVs					
CW	EMA	RIB	RUMP	RBY	IMF
+52	+2.2	+1.7	+2.0	+0.0	+0.8

Traits Observed: CE BWT 200WT 400WT(x2) 600WT SS FAT EMA IMF Genomics

A bull that captures your eye with tremendous outlook and cosmetic appeal. In the top 10% of the breed for female fertility with shorter days to calving EBV.



Purchaser:..... Price: \$.....

LOT 42

KOANUI X-RAY S419

Born 11/08/21

HB No. 0216210419P

KOANUI X-RAY 7078 (P)

- KOANUI XCELORATOR 5088 (BM) (P)
- KOANUI BLUSH 0291 (P)

- TRIARA XCELORATOR 594X (IMP CAN) (P)
- KOANUI GLORY 0303 (P)
- KOANUI BOULDER 7050 (ET) (P)
- KOANUI BLUSH 2195 (SBM) (P)

KOANUI CYNTHIA P421 (P)

- KOANUI BYLINE 6317 (P)
- KOANUI CYNTHIA 6218 (P)

- KOANUI BYLINE 4177 (P)
- KOANUI GRACEFUL 4264 (P)
- KOANUI HOOD 3135 (P)
- KOANUI CYNTHIA 7085 (P)

\$ INDEX VALUES	
Hereford Prime	+\$157
Beef Heifer	+\$228
Dairy Beef	+\$130

APRIL 2023 HEREFORD BREEDPLAN								
CALVING EASE EBVs				GROWTH & MILK EBVs				
CE DIR	CE DTRS	GEST	BWT	200	400	600	MAT	MILK
+8.1	+8.2	-1.6	+3.4	+41	+72	+98	+76	+22

FERTILITY EBVs	
SS	DTC
+2.6	-5.5

CARCASE EBVs					
CW	EMA	RIB	RUMP	RBY	IMF
+69	+3.4	+1.0	+1.4	+0.6	+0.4

Traits Observed: CE BWT 200WT 400WT(x2) 600WT SS FAT EMA IMF Genomics

X-Ray S419 has an impressive data set and is in the top 10% of the breed for every \$ Index. When you look at his two grand-sires you just know this pedigree has safety and predictability plus amazing soundness and functionality. Note some key benchmark animals in the top side of the pedigree.



Purchaser:..... Price: \$.....

LOT 43

KOANUI X-RAY S444

Born 13/08/21 HB No. 0216210444P

KOANUI X-RAY 7078 (P)

- { KOANUI XCELORATOR 5088 (BM) (P)
- { KOANUI BLUSH 0291 (P)

- { TRIARA XCELORATOR 594X (IMP CAN) (P)
- { KOANUI GLORY 0303 (P)
- { KOANUI BOULDER 7050 (ET) (P)
- { KOANUI BLUSH 2195 (SBM) (P)

KOANUI PEARL P104 (P)

- { EARNSCLEUGH KING 155713 (P)
- { KOANUI PEARL 4258 (P)

- { EARNSCLEUGH DUKE 111483 (S)
- { EARNSCLEUGH CYNTHIA 084784 (P)
- { KOANUI CHEROKEE 9075 (BM) (P)
- { KOANUI PEARL 7170 (P)

\$ INDEX VALUES	
Hereford Prime	+\$155
Beef Heifer	+\$177
Dairy Beef	+\$119

APRIL 2023 HEREFORD BREEDPLAN								
CALVING EASE EBVs				GROWTH & MILK EBVs				
CE DIR	CE DTRS	GEST	BWT	200	400	600	MAT	MILK
+6.1	+4.8	-0.5	+2.5	+36	+54	+72	+34	+26

FERTILITY EBVs	
SS	DTC
+1.4	-6.5

CARCASE EBVs					
CW	EMA	RIB	RUMP	RBY	IMF
+59	+5.9	+3.0	+4.0	+0.6	+1.0

Traits Observed: CE BWT 200WT 400WT(x2) 600WT SS FAT EMA IMF Genomics

You can see the calving ease in X-Ray S444 as he has such a flat shoulder. A very interesting data set with amazing carcass on such a smooth bull. In the top 10% of the breed for Hereford Prime \$ Index. Some key Benchmark animals in the pedigree too.



Purchaser:..... Price: \$.....

LOT 44

KOANUI STREET KID S432

Born 11/08/21

HB No. 0216210432P

OTENGI STREAKER 33 (P)

- LIMEHILLS STREAKER 150368 (BM) (P)
- OTENGI AMETHYST 1263 (P)

- LIMEHILLS STARTER 131040 (BM) (P)
- LIMEHILLS INA 130909 (SBM) (P)
- OTENGI FULLBACK 565 (P)
- OTENGI AMETHYST 893 (P)

KOANUI ANGEL 7529 (P)

- KOANUI WOOD 5243 (P)
- KOANUI ANGEL 5324 (P)

- BEECHWOOD BIG TIME (P)
- KOANUI DAINTY 8506 (P)
- MAUNGAHINA PLATINUM120173 (P)
- KOANUI ANGEL 1477 (P)

\$ INDEX VALUES	
Hereford Prime	+\$94
Beef Heifer	+\$122
Dairy Beef	+\$109

APRIL 2023 HEREFORD BREEDPLAN								
CALVING EASE EBVs				GROWTH & MILK EBVs				
CE DIR	CE DTRS	GEST	BWT	200	400	600	MAT	MILK
+2.0	+5.4	-0.1	+3.4	+38	+68	+95	+84	+32

FERTILITY EBVs	
SS	DTC
+2.0	-3.2

CARCASS EBVs					
CW	EMA	RIB	RUMP	RBY	IMF
+67	+3.5	+0.8	+1.1	+0.7	+0.1

Traits Observed: CE BWT 200WT 400WT(x2) 600WT SS FAT EMA IMF Genomics

A moderate framed bull with smoothness and style and a good back-end setup.



Purchaser:..... Price: \$.....

LOT 45

KOANUI GALLWAY S571

Born 24/08/21

HB No. 0216210571P

KOANUI GALLWAY Q570 (P)

- GRASSMERE GALLANT 152 (P)
- KOANUI ROSE 3568 (P)

- MONYMUSK GALLANT 110089 (BM) (P)
- GRASSMERE PRINCESS 826 (P)
- KOANUI CHEROKEE 9075 (BM) (P)
- KOANUI ROSE 0604 (P)

KOANUI IRANE Q005 (P)

- KOANUI TECHNO 6179 (P)
- KOANUI IRANE 5136 (P)

- KOANUI TECHNO 3062 (BM) (P)
- KOANUI ANGEL 2392 (P)
- KOANUI UNIVERSAL 3297 (P)
- KOANUI IRANE 3130 (P)

\$ INDEX VALUES	
Hereford Prime	+\$113
Beef Heifer	+\$135
Dairy Beef	+\$118

APRIL 2023 HEREFORD BREEDPLAN								
CALVING EASE EBVs				GROWTH & MILK EBVs				
CE DIR	CE DTRS	GEST	BWT	200	400	600	MAT	MILK
+4.8	+4.3	-2.1	+4.1	+33	+61	+79	+65	+22

FERTILITY EBVs	
SS	DTC
+2.5	-3.3

CARCASS EBVs					
CW	EMA	RIB	RUMP	RBY	IMF
+50	+3.2	+1.6	+1.9	-0.5	+1.5

Traits Observed: CE BWT 200WT 400WT(x2) 600WT SS FAT EMA IMF Genomics

Out of a two-year heifer who has a lovely Memphis calf this year. The sire, Gallway Q570, was the top priced bull in the 2021 sale.



Purchaser:..... Price: \$.....

LOT 46

KOANUI GALLWAY S164

Born 28/07/21

HB No. 0216210164P

KOANUI GALLWAY Q633 (P)

- GRASSMERE GALLANT 152 (P)
- KOANUI LEONORA 4116 (P)

- MONYMUSK GALLANT 110089 (BM) (P)
- GRASSMERE PRINCESS 826 (P)
- ROTOITI G123 (P)
- KOANUI LEONORA 0504 (P)

KOANUI GRACEFUL Q004 (P)

- KOANUI LEGEND 7109 (P)
- KOANUI GRACEFUL 7392 (P)

- R LEADER 6964 (IMP USA) (BM) (P)
- KOANUI PEARL 8388 (GBM) (P)
- KOANUI CAPTAIN 4217 (P)
- KOANUI GRACEFUL 2497 (P)

\$ INDEX VALUES	
Hereford Prime	+\$110
Beef Heifer	+\$134
Dairy Beef	+\$120

APRIL 2023 HEREFORD BREEDPLAN								
CALVING EASE EBVs				GROWTH & MILK EBVs				
CE DIR	CE DTRS	GEST	BWT	200	400	600	MAT	MILK
+2.4	+4.1	+0.3	+3.4	+42	+68	+102	+94	+25

FERTILITY EBVs	
SS	DTC
+1.3	-2.2

CARCASE EBVs					
CW	EMA	RIB	RUMP	RBY	IMF
+70	+3.1	+0.8	+0.6	+0.2	+1.0

Traits Observed: CE BWT 200WT 400WT(x2) 600WT SS FAT EMA IMF Genomics

A two-year heifer's calf and what a ripper - from a very good young cow. The mating has been an ideal cross with the capacity and volume from Q633 and the maternal refinement of Legend - it has really worked! S164 has 600-day Growth and Carcase weight EBVs in the top 10% of the breed.



Purchaser:..... Price: \$.....

LOT 47

KOANUI BACHELOR S473

Born 14/08/21 HB No. 0216210473P

KOANUI BACHELOR Q154 (P) { OTENGI BATON 484 (P)
KOANUI CYNTHIA 6427 (P)

{ OTENGI BATON 147 (P)
OTENGI GOLD 206 (P)
{ KOANUI CHEROKEE 3407 (P)
KOANUI CYNTHIA 1294 (P)

KOANUI CYNTHIA Q667 (P) { KOKONGA ANZAC 7017 (P)
KOANUI CYNTHIA 6640 (P)

{ INJEMIRA ANZAC K220 (IMP AUS) (P)
OKAWA CYNTHIA 0234 (P)
{ KOANUI BRITON 4260 (P)
KOANUI CYNTHIA 3189 (P)

\$ INDEX VALUES	
Hereford Prime	+\$144
Beef Heifer	+\$141
Dairy Beef	+\$118

APRIL 2023 HEREFORD BREEDPLAN								
CALVING EASE EBVs				GROWTH & MILK EBVs				
CE DIR	CE DTRS	GEST	BWT	200	400	600	MAT	MILK
+0.7	+2.5	+1.4	+4.3	+42	+66	+98	+74	+28

FERTILITY EBVs	
SS	DTC
+1.2	-5.2

CARCASS EBVs					
CW	EMA	RIB	RUMP	RBY	IMF
+69	+4.7	+2.0	+2.7	+0.1	+1.6

Traits Observed: CE BWT 200WT 400WT(x2) 600WT SS FAT EMA IMF Genomics

Stylish and smooth with a very impressive data set. A two-year heifer's calf who is just about in the top 10% of the breed for Hereford Prime \$ Index.



Purchaser:..... Price: \$.....

LOT 48

KOANUI MODERATOR S527

Born 19/08/21

HB No. 0216210527P

KOANUI MODERATOR P608 (P)

- KOANUI MIDRIB 5382 (P)
- KOANUI DAINTY 3481 (SBM) (P)

- OKAWA MARSHALL 1103 (P)
- KOANUI CYNTHIA 1112 (P)
- KOANUI UNANIMOUS 0408 (BM) (P)
- KOANUI DAINTY 2453 (PBM) (ET) (P)

KOANUI AMETHYST Q582 (P)

- BEECHWOOD GET STARTED 21 (P)
- KOANUI AMETHYST 8164 (P)

- OKAWA GOING 3011 (P)
- BEECHWOOD SPOT ON 239 (P)
- KOANUI DISPLAY 5588 (ET) (P)
- KOANUI AMETHYST 5522 (SBM) (P)

\$ INDEX VALUES	
Hereford Prime	+\$126
Beef Heifer	+\$141
Dairy Beef	+\$119

APRIL 2023 HEREFORD BREEDPLAN								
CALVING EASE EBVs				GROWTH & MILK EBVs				
CE DIR	CE DTRS	GEST	BWT	200	400	600	MAT	MILK
+4.6	+1.1	+0.3	+1.9	+32	+60	+89	+65	+28

FERTILITY EBVs	
SS	DTC
+2.0	-3.8

CARCASS EBVs					
CW	EMA	RIB	RUMP	RBY	IMF
+66	+4.3	+0.6	+0.8	+1.5	+0.5

Traits Observed: CE BWT 200WT 400WT(x2) 600WT SS FAT EMA IMF Genomics

A stylish and smooth bull with a very impressive data-set. A two year heifer's calf.



Purchaser:..... Price: \$.....

LOT 49

KOANUI LAYER S205

Born 31/07/21

HB No. 0216210205P

KOANUI LAYER P028 (P)

- { KOANUI LAYER 6278 (P)
- { KOANUI REGAL 6629 (P)

- { R LEADER 6964 (IMP USA) (BM) (P)
- { KOANUI CYNTHIA 6099 (P)
- { KOANUI BARITONE 3600 (P)
- { KOANUI REGAL 3111 (S)

KOANUI PEARL Q641 (P)

- { KOANUI XCELERATOR 7194 (P)
- { KOANUI PEARL 7494 (P)

- { KOANUI XCELERATOR 5088 (BM) (P)
- { KOANUI IRANE 1135 (P)
- { KOANUI CAPTAIN 4217 (P)
- { KOANUI PEARL 2099 (P)

\$ INDEX VALUES	
Hereford Prime	+\$155
Beef Heifer	+\$192
Dairy Beef	+\$123

APRIL 2023 HEREFORD BREEDPLAN								
CALVING EASE EBVs				GROWTH & MILK EBVs				
CE DIR	CE DTRS	GEST	BWT	200	400	600	MAT	MILK
+6.8	+5.9	-0.1	+1.8	+37	+63	+82	+55	+20

FERTILITY EBVs	
SS	DTC
+2.0	-5.7

CARCASS EBVs					
CW	EMA	RIB	RUMP	RBV	IMF
+62	+3.8	+1.5	+1.9	+0.5	+0.7

Traits Observed: CE BWT 200WT 400WT(x2) 600WT SS FAT EMA IMF Genomics

Layer S205 has an excellent set of performance figures with very high \$ Indexes. In the top 10% of the breed for Hereford Prime \$ Index. Out of a two year-heifer who has another very good bull calf this year.



Purchaser:..... Price: \$.....

LOT 50

KOANUI LANCELOT S121

Born 23/07/21

HB No. 0216210121P

KOANUI LANCELOT Q494 (P)

- KOANUI LANCELOT 6436 (P)
- KOANUI CYNTHIA 1007 (P)

- R LEADER 6964 (IMP USA) (BM) (P)
- KOANUI MINERVA 9079 (P)
- KOANUI CHIEFLY 9068 (P)
- KOANUI CYNTHIA 8472 (P)

KOANUI IRANE Q365 (P)

- KOANUI BROADWAY 7292 (P)
- KOANUI IRANE 7224 (P)

- BEECHWOOD BIG TIME (P)
- KOANUI LEONORA 4116 (P)
- KOANUI SMOKE 5223 (P)
- KOANUI IRANE 5485 (P)

\$ INDEX VALUES	
Hereford Prime	+\$101
Beef Heifer	+\$138
Dairy Beef	+\$117

APRIL 2023 HEREFORD BREEDPLAN								
CALVING EASE EBVs				GROWTH & MILK EBVs				
CE DIR	CE DTRS	GEST	BWT	200	400	600	MAT	MILK
+4.8	+3.1	-1.9	+3.1	+36	+67	+101	+93	+26

FERTILITY EBVs	
SS	DTC
+2.2	-1.8

CARCASS EBVs					
CW	EMA	RIB	RUMP	RBY	IMF
+65	+3.5	-0.2	-0.4	+1.5	-0.3

Traits Observed: CE BWT 200WT 400WT(x2) 600WT SS FAT EMA IMF Genomics

A two-year heifer's calf. Lancelot S121 has performance and maternal with strength and depth. He is in the top 10% of the breed for 400 and 600-day Growth EBVs.



Purchaser:..... Price: \$.....

LOT 51

KOANUI GALLWAY S017

Born 19/07/21

HB No. 0216210017P

KOANUI GALLWAY Q633 (P)

- GRASSMERE GALLANT 152 (P)
- KOANUI LEONORA 4116 (P)

- MONYMUSK GALLANT 110089 (BM) (P)
- GRASSMERE PRINCESS 826 (P)
- ROTOITI G123 (P)
- KOANUI LEONORA 0504 (P)

KOANUI PEARL Q367 (P)

- WAIOHINE CHARISMA 1601 (P)
- KOANUI PEARL 7446 (P)

- CAPETHORNE 10 34 (P)
- WAIOHINE SUSAN 1450 (P)
- OKAWA MARINE 140138 (P)
- KOANUI PEARL 2152 (P)

\$ INDEX VALUES	
Hereford Prime	+\$128
Beef Heifer	+\$124
Dairy Beef	+\$108

APRIL 2023 HEREFORD BREEDPLAN								
CALVING EASE EBVs				GROWTH & MILK EBVs				
CE DIR	CE DTRS	GEST	BWT	200	400	600	MAT	MILK
-0.7	+4.2	+1.7	+5.4	+42	+70	+103	+96	+20

FERTILITY EBVs	
SS	DTC
+1.4	-3.1

CARCASS EBVs					
CW	EMA	RIB	RUMP	RBY	IMF
+72	+4.4	+1.0	+1.1	+1.2	+0.6

Traits Observed: CE BWT 200WT 400WT(x2) 600WT SS FAT EMA IMF Genomics

Style and presence with performance and a good body like his sire. A two-year heifer's calf with nice carcass data. In the top 10% of the breed for 600-day Growth EBV.



Purchaser:..... Price: \$.....

LOT 52

KOANUI KING S448

Born 13/08/21 HB No. 0216210448P

KOANUI KING P438 (P)

- EARNSCLEUGH KING 155713 (P)
- KOANUI PEARL 2176 (SBM) (P)

- EARNSCLEUGH DUKE 111483 (S)
- EARNSCLEUGH CYNTHIA 084784 (P)
- OKAWA BARITONE 9027 (P)
- KOANUI PEARL 0510 (P)

KOANUI LYDIA 4370 (P)

- KOANUI ROGER 1581 (P)
- KOANUI LYDIA 2017 (P)

- KOANUI RUSSIA 7012 (P)
- KOANUI DAINTY 2453 (PBM) (ET) (P)
- OKAWA BARITONE 9027 (P)
- KOANUI LYDIA 0453 (P)

\$ INDEX VALUES	
Hereford Prime	+\$83
Beef Heifer	+\$87
Dairy Beef	+\$101

APRIL 2023 HEREFORD BREEDPLAN								
CALVING EASE EBVs				GROWTH & MILK EBVs				
CE DIR	CE DTRS	GEST	BWT	200	400	600	MAT	MILK
+2.3	+2.0	+0.7	+3.5	+37	+61	+80	+69	+27

FERTILITY EBVs	
SS	DTC
+2.8	-3.0

CARCASS EBVs					
CW	EMA	RIB	RUMP	RBY	IMF
+56	+2.5	+0.0	-0.3	+1.0	+0.0

Traits Observed: CE BWT 200WT 400WT(x2) 600WT SS FAT EMA IMF Genomics

King S448 is out of a Koanui matriarch who is a consistent breeder of sale bulls. The sire is a breed trait leader for 200, 400 and 600 day Growth EBVs.



Purchaser:..... Price: \$.....

LOT 53

KOANUI KINSIT S292

Born 05/08/21 HB No. 0216210292P

MATARIKI KINSIT (P)

- MATARIKI 110637 (P)
- MATARIKI VICTORIA 120223 (P)

- MATARIKI JAULIN 080665 (S)
- MATARIKI VICTORIA 070351 (P)
- MATARIKI HERMAN 070400 (P)
- MATARIKI VICTORIA 080691 (P)

KOANUI REGAL 3111 (S)

- KOANUI UNANIMOUS 0408 (BM) (P)
- KOANUI REGAL 3302 (P)

- KOANUI UNANIMOUS 7174 (P)
- KOANUI GIRLIE 3048 (SBM) (P)
- AWHEA ARROW 0030 (P)
- KOANUI REGAL R371 (P)

\$ INDEX VALUES	
Hereford Prime	+\$125
Beef Heifer	+\$141
Dairy Beef	+\$109

APRIL 2023 HEREFORD BREEDPLAN								
CALVING EASE EBVs				GROWTH & MILK EBVs				
CE DIR	CE DTRS	GEST	BWT	200	400	600	MAT	MILK
+5.1	+4.4	+1.4	+1.7	+25	+48	+68	+47	+22

FERTILITY EBVs	
SS	DTC
+3.1	-5.7

CARCASE EBVs					
CW	EMA	RIB	RUMP	RBY	IMF
+53	+4.7	+2.3	+2.8	+0.3	+0.6

Traits Observed: CE BWT 200WT 600WT Genomics

S292 has the best qualities from both sides. From his dam he has the maternal, moderation and softness while his sire, Kinsit, has given him carcass and performance. This mix is best for use on cows.



Purchaser:..... Price: \$.....

LOT 54

KOANUI MILTON S296

Born 05/08/21 HB No. 0216210296P

KOANUI MIDRIB P433 (P)

- KOANUI MIDRIB 5382 (P)
- KOANUI AMETHYST 8358 (P)

- OKAWA MARSHALL 1103 (P)
- KOANUI CYNTHIA 1112 (P)
- KOANUI BATON 6187 (BM) (P)
- KOANUI AMETHYST 6077 (P)

KOANUI AMETHYST P441 (P)

- KOANUI XCELERATOR 5088 (BM) (P)
- KOANUI AMETHYST 5466 (P)

- TRIARA XCELERATOR 594X (IMP CAN) (P)
- KOANUI GLORY 0303 (P)
- KOANUI DISPLAY 2450 (P)
- KOANUI AMETHYST 1227 (P)

\$ INDEX VALUES	
Hereford Prime	+\$107
Beef Heifer	+\$171
Dairy Beef	+\$122

APRIL 2023 HEREFORD BREEDPLAN								
CALVING EASE EBVs				GROWTH & MILK EBVs				
CE DIR	CE DTRS	GEST	BWT	200	400	600	MAT	MILK
+10.7	+5.5	-1.0	+1.5	+31	+57	+73	+52	+21

FERTILITY EBVs	
SS	DTC
+2.4	-3.3

CARCASS EBVs					
CW	EMA	RIB	RUMP	RBV	IMF
+53	+1.9	+0.9	+1.1	+0.1	+0.3

Traits Observed: BWT 200WT 400WT(x2) 600WT SS FAT EMA IMF

An ideal heifer bull with these figures and both grandsires are two of the best sires we have used! Dam is a very tidy female that is very functional.



Purchaser:..... Price: \$.....

LOT 55

KOANUI KING S050

Born 19/07/21 HB No. 0216210050P

KOANUI KING P438 (P)

- EARNSCLEUGH KING 155713 (P)
- KOANUI PEARL 2176 (SBM) (P)

- EARNSCLEUGH DUKE 111483 (S)
- EARNSCLEUGH CYNTHIA 084784 (P)
- OKAWA BARITONE 9027 (P)
- KOANUI PEARL 0510 (P)

KOANUI GLORY 2315 (P)

- KOANUI BEDFORD 0103 (P)
- KOANUI GLORY 0084 (P)

- LIMEHILLS BEDFORD 07 902 (P)
- KOANUI ROSE 8279 (P)
- KOANUI UNANIMOUS 7174 (P)
- KOANUI GLORY 6170 (P)

\$ INDEX VALUES	
Hereford Prime	+\$92
Beef Heifer	+\$65
Dairy Beef	+\$103

APRIL 2023 HEREFORD BREEDPLAN								
CALVING EASE EBVs				GROWTH & MILK EBVs				
CE DIR	CE DTRS	GEST	BWT	200	400	600	MAT	MILK
+1.8	-2.4	-1.2	+1.6	+28	+51	+66	+51	+24

FERTILITY EBVs	
SS	DTC
+1.8	-4.7

CARCASS EBVs					
CW	EMA	RIB	RUMP	RBV	IMF
+48	+2.3	+1.1	+1.0	-0.6	+1.4

Traits Observed: GL CE BWT 200WT 400WT 600WT Genomics

A super quiet bull who is easy on the eye, very soft and structurally correct. Sire is a breed trait leader for 200, 400 and 600-day Growth EBVs.



Purchaser:..... Price: \$.....

This sale will be hosted by bidr® (bidr.co.nz) as a HYBRID ON-FARM auction, with online bidding and a live-stream available for online purchasers.

All intending online purchasers must register with bidr® using an account held with one of the bidr® partner agencies in advance of the sale date.

The bidr® team is available to assist intending purchasers with signing up and registering – please call 0800 TO BIDR (0800 86 2437), or email enquiries@bidr.co.nz for assistance at any point.

Alternatively, contact your local bidr® representative:

UPPER NORTH ISLAND

Bruno Santos
027 221 8276

UPPER SOUTH ISLAND

McKenzie Alfeld
027 341 8066

LOWER NORTH ISLAND

Aimee Flynn
027 282 1710

LOWER SOUTH ISLAND

Sam Murphy
027 243 2736

SALES COORDINATOR

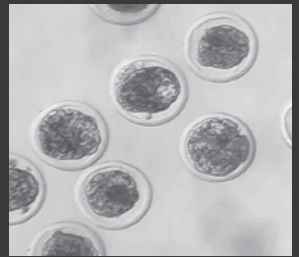
Olivia Manley
027 348 6354



TARARUA BREEDING CENTRE

WE COVER ALL ASPECTS OF REPRODUCTION

On Centre and on farm semen collection
Bull fertility evaluations and fresh collections for AI
AI and ET services
Import/Export of semen/embryos
Pre-export isolation



CONTACT US:

06 376 4955

office@tararuabreedingcentre.co.nz

www.tararuabreedingcentre.co.nz

Cattle, sheep and goat reproductive specialists



Tararua Breeding Centre
Part of Totally Vets Ltd

BBSE - Bull Breeding Soundness Evaluation March 2023

The Gold standard for this test is to collect the bull by an Artificial Vagina and have the semen assessed by a registered morphologist. All bulls that are tested by Tararua Breeding Centre are tested using this Gold Standard.

LIBIDO	Bulls must demonstrate the ability to mount an "in season" heifer or cow.
PENILE SOUNDNESS	Each bull's extended penis is examined during mounting for structural soundness, injuries and abnormalities, including deviations, persistent frenulum's, adhesions, genital warts and injuries that may have occurred while out mating.
SEMEN EVALUATION	Each bull's ejaculate, which is collected in an artificial vagina, is examined microscopically by a registered Morphologist for Density, Motility, Morphology and must pass the minimum standards of 70% normal at the time of testing.

Signed:



Guy Haynes
Bovine Reproduction Consultant

NOTES

Catalogue Index - Lot Order

LOT	TAG	HERDBOOK NUMBER
01	S174	0216210174
02	S085	0216210085
03	S149	0216210149
04	S508	0216210508
05	S392	0216210392
06	S309	0216210309
07	S293	0216210293
08	S074	0216210074
09	S436	0216210436
10	S097	0216210097
11	S155	0216210155
12	S004	0216210004
13	S057	0216210057
14	S360	0216210360
15	S415	0216210415
16	S132	0216210132
17	S420	0216210420
18	S031	0216210031
19	S173	0216210173
20	S194	0216210194
21	S188	0216210188
22	S400	0216210400
23	S485	0216210485
24	S539	0216210539
25	S630	0216210630
26	S674	0216210674
27	S635	0216210635
28	S369	0216210369

LOT	TAG	HERDBOOK NUMBER
29	S312	0216210312
30	S079	0216210079
31	S138	0216210138
32	S184	0216210184
33	S243	0216210243
34	S140	0216210140
35	S484	0216210484
36	S386	0216210386
37	S104	0216210104
38	S222	0216210222
39	S621	0216210621
40	S507	0216210507
41	S567	0216210567
42	S419	0216210419
43	S444	0216210444
44	S432	0216210432
45	S571	0216210571
46	S164	0216210164
47	S473	0216210473
48	S527	0216210527
49	S205	0216210205
50	S121	0216210121
51	S017	0216210017
52	S448	0216210448
53	S292	0216210292
54	S296	0216210296
55	S050	0216210050

NOTES

KOANUI POLLED HEREFORDS Ltd.

Purchaser's Instruction Slip

To be completed by the purchaser at the end of the sale for the vendor's records. Please complete this slip and hand to clerk at completion of sale. * indicates compulsory fields

*NAME: _____

*NAIT NUMBER: _____

ADDRESS: _____

*TELEPHONE: _____

*EMAIL: _____

*DELIVERY DETAILS IF DIFFERENT FROM ABOVE

DELIVERY CONTACT NAME: _____

DELIVERY PHONE: _____

DELIVERY ADDRESS: _____

PURCHASES: Lot No. _____ Price: _____

PURCHASES: Lot No. _____ Price: _____

PURCHASES: Lot No. _____ Price: _____

PURCHASES: Lot No. _____ Price: _____

Please tick this box if you consent to your information being shared between

..... insurer name , vendor or organising body
and/or the relevant livestock agency, for the purpose of offering you insurance.

TRANSPORT INSTRUCTIONS: _____



I UNDERSTAND THAT I MUST UNDERTAKE TO INSURE MY BULL/S AT THE END OF THE AUCTION. PLEASE CONTACT YOUR OWN INSURANCE COMPANY.

ADDRESS: _____

*STUD HERD No. IF TRANSFER REQUIRED: _____

*NAME OF PURCHASING LIVESTOCK AGENT: _____

*SIGNATURE OF PURCHASER OR AGENT: _____

Date June 15 2023



Conditions of Sale

1. This sale is a “Hybrid online and on farm auction sale.” In addition to the normal on-farm auction format the sale will be hosted by bidr® (www.bidr.co.nz) as a HYBRID auction, with online bidding and a live-stream available on sale day. Note the on-farm auctioneer remains in control of the sale and the fall of the hammer.
All intending ONLINE purchasers must register on bidr® in advance of the sale date, by visiting the website and using the “sign up” button, adding their contact information and nominating the agency they would like to purchase through and account held with that agency. Alternatively, purchasers can organise an agent from one of the agencies listed on bidr® to buy on their behalf.
All intending ON-FARM purchasers must register with the booking clerk prior to commencement of the sale.
2. On behalf of the vendor, PGG Wrightson Ltd (PGW) will pay a purchasing rebate of 6% of the purchase price excluding GST, plus GST, to livestock agents with a PGW Monthly Account. This also applies to Accredited Agencies on bidr® where the buyer has registered on bidr® under that Accredited Agency.
3. All Lots sold exclusive of G.S.T
4. PAYMENT: Fourteen days after the sale.
bidr®’s Conditions of Sale and Terms of Use apply. These terms can be inspected at <https://bidr.co.nz/content/user-terms-conditions>
PGG Wrightson (PGW)’s Monthly Account Terms of Trade also apply to the extent deemed relevant by PGW. The current versions of PGW’s Monthly Account Terms of Trade are also available online at: <https://www.pggwrightson.co.nz/Our-Company/Terms-and-Conditions> or in hardcopy on request.
5. Although all care has been taken in compiling this Catalogue, no responsibility will be taken for any errors or omissions thereof.
6. No warranty will be given with any Lot, and as all Lots are open for inspection prior to the sale, the same are sold with all faults, if any. No compensation shall be made in respect of any fault or error of description of any Lots; however, the vendor reserves the right to make compensation to a buyer if it is the vendor’s wish. It is recommended to inspect bulls before the sale where possible.
7. Every Lot will be at the risk of the purchaser as from the fall of the hammer.
8. **Buyers are advised to insure Bulls.** All Bulls remaining on the property pending delivery should be insured by the Purchaser as no responsibility shall be taken by the Vendor. All bulls are to be uplifted by 1 July, 2023 unless arrangements prior to the sale have been made.
9. ALL STUD BULLS purchased must be uplifted as soon as transport is available. Transfers will be available on Stud Bulls. Please provide Transfer Herd Number(s) to the vendor on the Purchaser’s Slip if a transfer is required.
10. All Bulls have been Service and Semen tested. All bulls are BVD Tested Negative and vaccinated for BVD with Hiprabovis prior to sale.
11. T.B. STATUS C10.

For further information contact:

- The bidr® team is always available to help purchasers get signed up and registered, and the HelpDesk is proudly managed in-house from the Waikato. Please call 0800 TO BIDR (0800 86 2437), or email enquiries@bidr.co.nz for assistance at any point. Alternatively, contact Aimee Flynn, National Territory Manager, for any enquiries on 027 282 1710.
- The Auctioneer: Mr Cam Heggie PGG Wrightson Genetics 027 501 8182
- Your own livestock agent.

Catalogue Index - Tag Order

LOT	TAG	HERDBOOK NUMBER
12	S004	0216210004
51	S017	0216210017
18	S031	0216210031
55	S050	0216210050
13	S057	0216210057
08	S074	0216210074
30	S079	0216210079
02	S085	0216210085
10	S097	0216210097
37	S104	0216210104
50	S121	0216210121
16	S132	0216210132
31	S138	0216210138
34	S140	0216210140
03	S149	0216210149
11	S155	0216210155
46	S164	0216210164
19	S173	0216210173
01	S174	0216210174
32	S184	0216210184
21	S188	0216210188
20	S194	0216210194
49	S205	0216210205
38	S222	0216210222
33	S243	0216210243
53	S292	0216210292
07	S293	0216210293
54	S296	0216210296

LOT	TAG	HERDBOOK NUMBER
06	S309	0216210309
29	S312	0216210312
14	S360	0216210360
28	S369	0216210369
36	S386	0216210386
05	S392	0216210392
22	S400	0216210400
15	S415	0216210415
42	S419	0216210419
17	S420	0216210420
44	S432	0216210432
09	S436	0216210436
43	S444	0216210444
52	S448	0216210448
47	S473	0216210473
35	S484	0216210484
23	S485	0216210485
40	S507	0216210507
04	S508	0216210508
48	S527	0216210527
24	S539	0216210539
41	S567	0216210567
45	S571	0216210571
39	S621	0216210621
25	S630	0216210630
27	S635	0216210635
26	S674	0216210674

We can't wait to see you!



Jennifer, Fred, Allie, Gerard, Hugh, Chris and Glen Chesterman at our 50th anniversary sale.

For more information, or to visit, please contact:

Chris, Jennifer & the Chesterman family

443 Maraetotara Rd, RD12, Havelock North, 4294

Phone: +64 6874 7844 **Mobile:** +64 27 4777 637

Email: info@koanuiherefords.co.nz

www.koanuiherefords.co.nz